

## Lighting

### Autograph Package - Included

*Fixtures per plan*



P350153-009



P350153-031

#### 1 STORY FOYER

**P350153-009** Brushed Nickel  
13-3/4" dia., 11-7/8" ht.,  
Overall ht. w/chain 50-1/2",  
wire 10'.  
Three candelabra base lamps,  
each 60w max.

#### 1 STORY FOYER

**P350153-031** Matte Black  
13-3/4" dia., 11-7/8" ht.,  
Overall ht. w/chain 50-1/2",  
wire 10'.  
Three candelabra base lamps,  
each 60w max.

#### 2 STORY FOYER

**P500239-009** Brushed Nickel  
12.87" dia., 17.12" ht.  
3 candelabra base, 60w max.



#### 2 STORY FOYER

**P500239-031** Matte Black  
12.87" dia., 17.12" ht.  
3 candelabra base, 60w max.



## Lighting Upgrade Option

### Autograph Package

*Fixtures per plan*



P400209-009

#### DINING ROOM

**P400209-009** Brushed Nickel  
24" dia., 19-3/4" ht.,  
Overall ht. w/chain 85-1/2", wire 15'.  
Five candelabra base lamps,  
each 60w max.



P400209-031

#### DINING ROOM

**P400209-031** Matte Black  
24" dia., 19-3/4" ht.,  
Overall ht. w/chain 85-1/2", wire 15'.  
Five candelabra base lamps,  
each 60w max.



P500243-009

#### BREAKFAST NOOK

**P500243-009** Brushed Nickel  
21" dia., 11" ht.,  
Overall ht. w/chain 77", wire 15'.  
Three candelabra base lamps,  
each 60w max.



P500243-031

#### BREAKFAST NOOK

**P500243-031** Matte Black  
21" dia., 11" ht.,  
Overall ht. w/chain 77", wire 15'.  
Three candelabra base lamps,  
each 60w max.

## Lighting Upgrade Option

### Autograph Package

*Fixtures per plan*



P300121-009

**POWDER, MSTR BATH X 2**  
**P300121-009** Brushed Nickel  
16-1/4" W., 7-3/8" ht.  
Extends 7-1/4". H/CTR 4-5/8".  
Two medium base lamps,  
each 75w max.



P300121-143

**POWDER, MSTR BATH X 2,**  
**P300121-143** Graphite  
16-1/4" W., 7-3/8" ht.  
Extends 7-1/4". H/CTR 4-5/8".  
Two medium base lamps,  
each 75w max.



P300122-009

**SECONDARY BATH**  
**P300122-009** Brushed Nickel  
23-3/8" W., 7-3/8" ht.  
Extends 7-7/8". H/CTR 4-5/8".  
Three medium base lamps,  
each 75w max.



P300122-143

**SECONDARY BATH**  
**P300122-143** Graphite  
23-3/8" W., 7-3/8" ht.  
Extends 7-7/8". H/CTR 4-5/8".  
Three medium base lamps,  
each 75w max.

## Lighting Upgrade Option

### Autograph Package

*Fixtures per plan*



P810013-028-30

**BEDS, SHOWER/TUB, KITCHEN, PANTRY,  
HALLS, PORCH, GARAGE,**

**P810013-028-30** Satin White

7-1/2" dia., 1-5/16" ht.

One LED lamp,

15.5w max.



P560022-031

**GARAGE EXTERIOR**

**P560022-031** Textured Black

7" W., 21-3/4" ht.

Extends 8-3/4". H/CTR 8-3/8".

Two candelabra base lamps,  
each 60w max.

## Lighting Upgrade Option

### Coastal Package

*Fixtures per plan*



P350117-141

#### **1 STORY FOYER**

**P350117-141** Galvanized Finish  
15-1/4" dia., 12-5/8" ht.,  
Overall ht. w/chain 53", wire 10'.  
Four candelabra base lamps,  
each 60w max.



P500093-141

#### **2 STORY FOYER**

**P500093-141** Galvanized Finish  
21-1/4" dia., 24" ht.,  
Overall ht. w/chain 99", wire 15'.  
Three medium base lamps,  
each 60w max.

## Lighting Upgrade Option

### Coastal Package

*Fixtures per plan*



P400158-141

#### **DINING ROOM**

**P400158-141** Galvanized Finish  
26" dia., 30" ht.,  
Overall ht. w/chain 105-1/2",  
wire 15'.  
Five candelabra base lamps,  
each 60w max.



P500023-141

#### **BREAKFAST NOOK**

**P500023-141** Galvanized Finish  
21-5/8" dia., 18-1/4" ht.,  
Overall ht. w/chain 93-1/2", wire 10'.  
Four medium base lamps,  
each 75w max.

## Lighting Upgrade Option

### Coastal Package

*Fixtures per plan*



P300040-015

#### **POWDER, MSTR BATH X 2**

**P300040-015** Polished Chrome  
15-1/8" W., 8-3/8" ht.  
Extends 7-1/8". H/CTR 6".  
Two medium base lamps,  
each 100w max.



P300041-015

#### **SECONDARY BATHS**

**P300041-015** Polished Chrome  
24-1/4" W., 8-3/8" ht.  
Extends 7-1/8". H/CTR 6".  
Three medium base lamps,  
each 100w max.

## Lighting Upgrade Option

### Coastal Package

*Fixtures per plan*



P810013-028-30

**BEDS, SHOWER/TUB, KITCHEN,  
PANTRY, HALLS, PORCH, GARAGE**

**P810013-028-30** Satin White

7-1/2" dia., 1-5/16" ht.

One LED lamp,

15.5w max.



P5723-71

**GARAGE EXTERIOR**

**P5723-71** Gilded Iron

12" W., 12-3/8" ht.

Extends 13-1/8". H/CTR 6-7/8".

One medium base lamp,

100w max.



## Lighting Upgrade Option

### Modern Package

*Fixtures per plan*



P350151-009



P350151-031

#### 1 STORY FOYER

**P350151-009** Brushed Nickel  
13" dia., 6-1/2" ht.  
Two medium base lamps,  
each 60w max.

#### 1 STORY FOYER

**P350151-031** Matte Black  
13" dia., 6-1/2" ht.  
Two medium base lamps,  
each 60w max.



P500284-009

#### 2 STORY FOYER

**P500284-009** Brushed Nickel  
13-1/2" W., 20-1/2" ht.,  
Overall ht. w/stem 77", wire 10'.  
Extends 13-1/2".  
Two candelabra base lamps,  
each 60w max.



P500284-031

#### 2 STORY FOYER

**P500284-031** Matte Black  
13-1/2" W., 20-1/2" ht.,  
Overall ht. w/stem 77", wire 10'.  
Extends 13-1/2".  
Two candelabra base lamps,  
each 60w max.

## Lighting Upgrade Option

### Modern Package

*Fixtures per plan*

P400226-009



#### DINING ROOM

**P400226-009** Brushed Nickel  
21-5/8" sq., 12-7/8" ht.,  
Overall ht. w/stem 70", wire 15'.  
Four medium base lamps,  
each 100w max.

P400226-031



#### DINING ROOM

**P400226-031** Matte Black  
21-5/8" sq., 12-7/8" ht.,  
Overall ht. w/stem 70", wire 15'.  
Four medium base lamps,  
each 100w max.

P4319-09



#### BREAKFAST NOOK

**P4319-09** Brushed Nickel  
21" dia., 19-5/8" ht.,  
Overall ht. w/chain 95", wire 15'.  
Five medium base lamps,  
each 100w max.

P4319-31



#### BREAKFAST NOOK

**P4319-31** Textured Black  
21" dia., 20-1/8" ht.,  
Overall ht. w/stem 95", wire 15'.  
Five medium base lamps,  
each 100w max.

## Lighting Upgrade Option

### Modern Package

*Fixtures per plan*



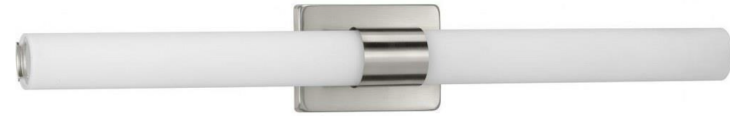
POWDER, MSTR BATH X2

**\*P300150-009-30** Brushed Nickel

22.25" W., 4.75" ht., 3.62" D.

36w integrated LED, 3000K,

90 CRI, 1942 delivered lumens.



SECONDARY BATHS

**P300151-009-30** Brushed Nickel

32.37" W., 4.75" ht., 3.62" D.

53w integrated LED, 3000K,

90 CRI, 2768 delivered lumens.

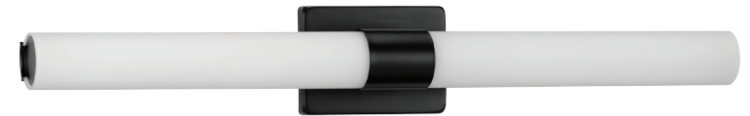
POWDER, MSTR BATH X2

**P300150-031-30** Matte Black

22.25" W., 4.75" ht., 3.62" D.

36w integrated LED, 3000K,

90 CRI, 1942 delivered lumens.



SECONDARY BATHS

**\*P300151-031-30** Matte Black

32.37" W., 4.75" ht., 3.62" D.

53w integrated LED, 3000K,

90 CRI, 2768 delivered lumens.

## Lighting Upgrade Option

### Modern Package

*Fixtures per plan*



P810013-028-30

**BEDS, SHOWER/TUB, KITCHEN,  
PANTRY, HALLS, PORCH, GARAGE**

**P810013-028-30** Satin White

7-1/2" dia., 1-5/16" ht.

One LED lamp,

15.5w max.



P5948-31

**GARAGE EXTERIOR**

**P5948-31** Textured Black

6" W., 13-5/8" ht.

Extends 6-1/4". H/CTR 5-1/8".

One medium base lamp,

100w max.