

The Winston 2020

Bedrooms: 3-4
Baths: 2.5



Craftsman

2,225 sq. ft.



Classic

2,225 sq. ft.



Coastal

2,225 sq. ft.



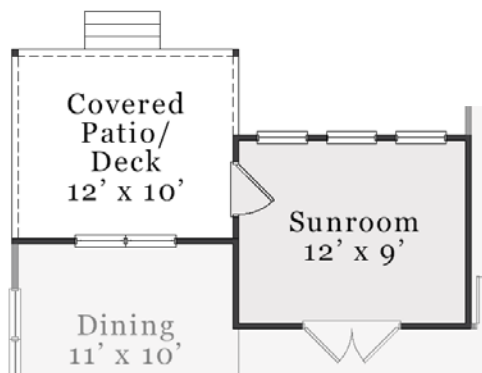
European

2,225 sq. ft.

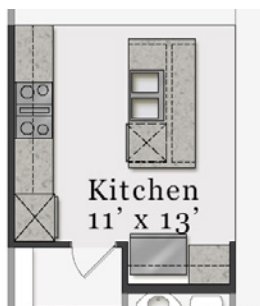


A PERCENTAGE OF EVERY HOME SOLD GOES TO
SUPPORT ALZHEIMER'S RESEARCH AND CARE.

First Floor



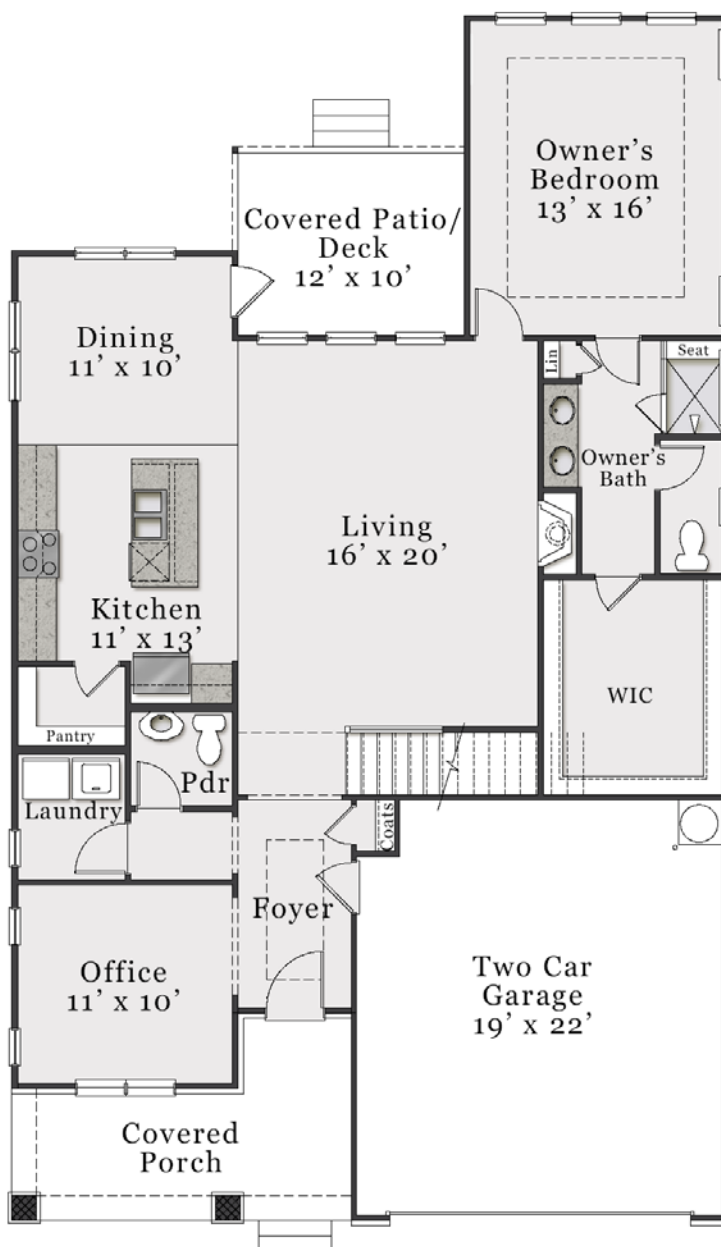
Opt. Sunroom (Approx. 122 sq. ft.)



Opt. Deluxe Kitchen



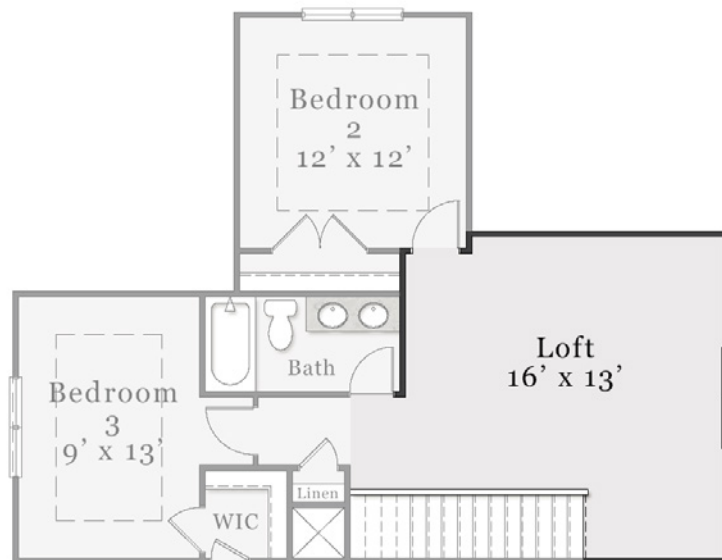
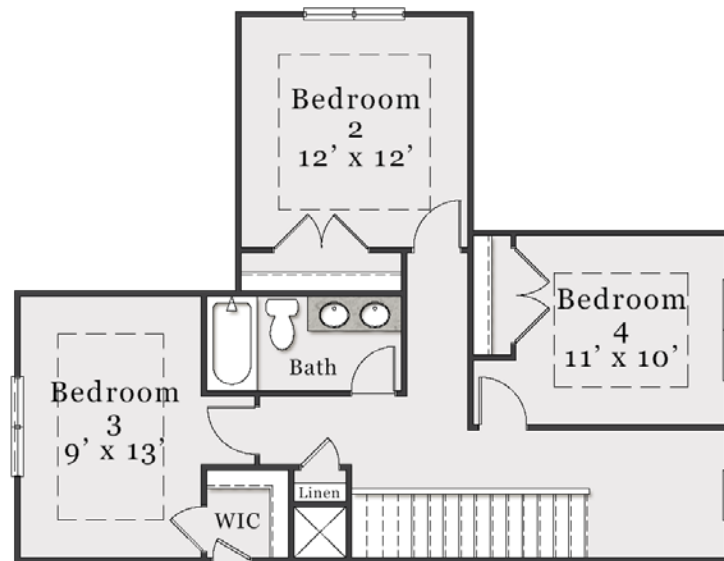
Opt. Office Double Doors



Opt. Owner's Deluxe Bath

The floorplan shown is the Craftsman elevation.
Other elevations are similar but may include minor layout and square footage differences.

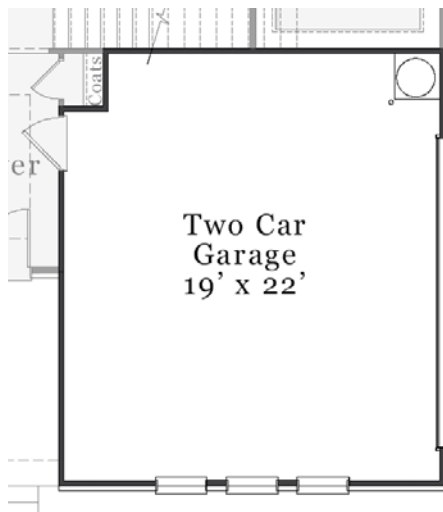
Second Floor



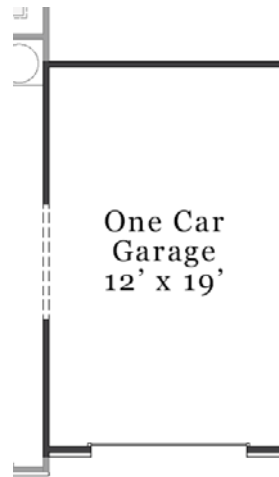
Opt. Loft

The floorplan shown is the Craftsman elevation.
Other elevations are similar but may include minor layout and square footage differences.

Plan Options



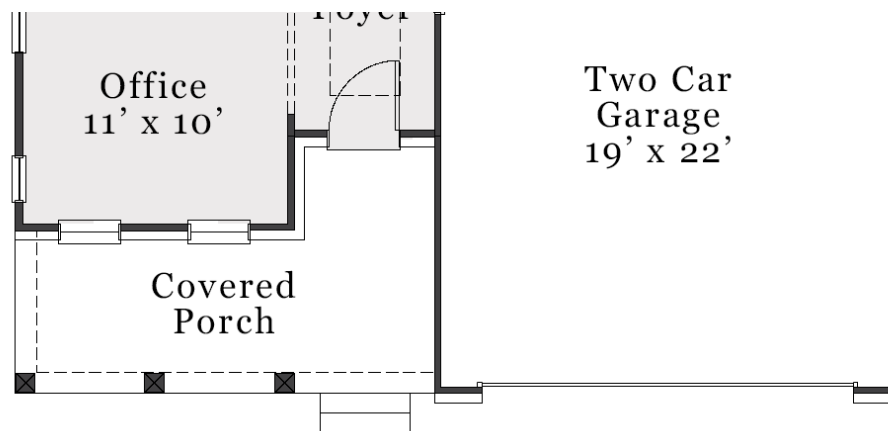
Opt. Side Load Garage



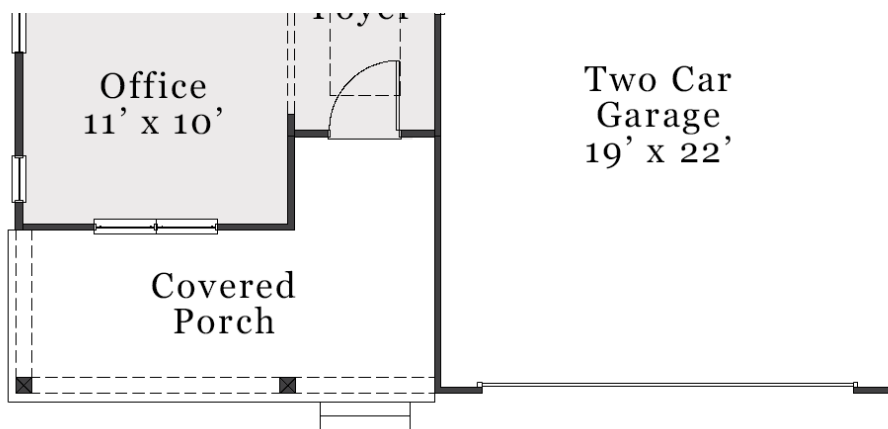
Opt. Third Bay Garage

The floorplan shown is the Craftsman elevation.
Other elevations are similar but may include minor layout and square footage differences.

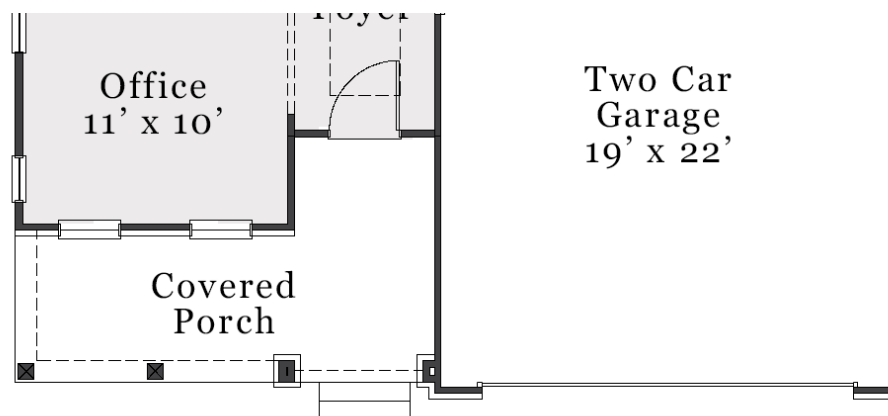
Elevation Specific Base Floors



Classic First Floor



Coastal First Floor



European First Floor