

## The Tucker 2020

Bedrooms: 3  
Baths: 2



*Craftsman*

1,492 sq. ft.



*Classic*

1,492 sq. ft.



*Coastal*

1,492 sq. ft.



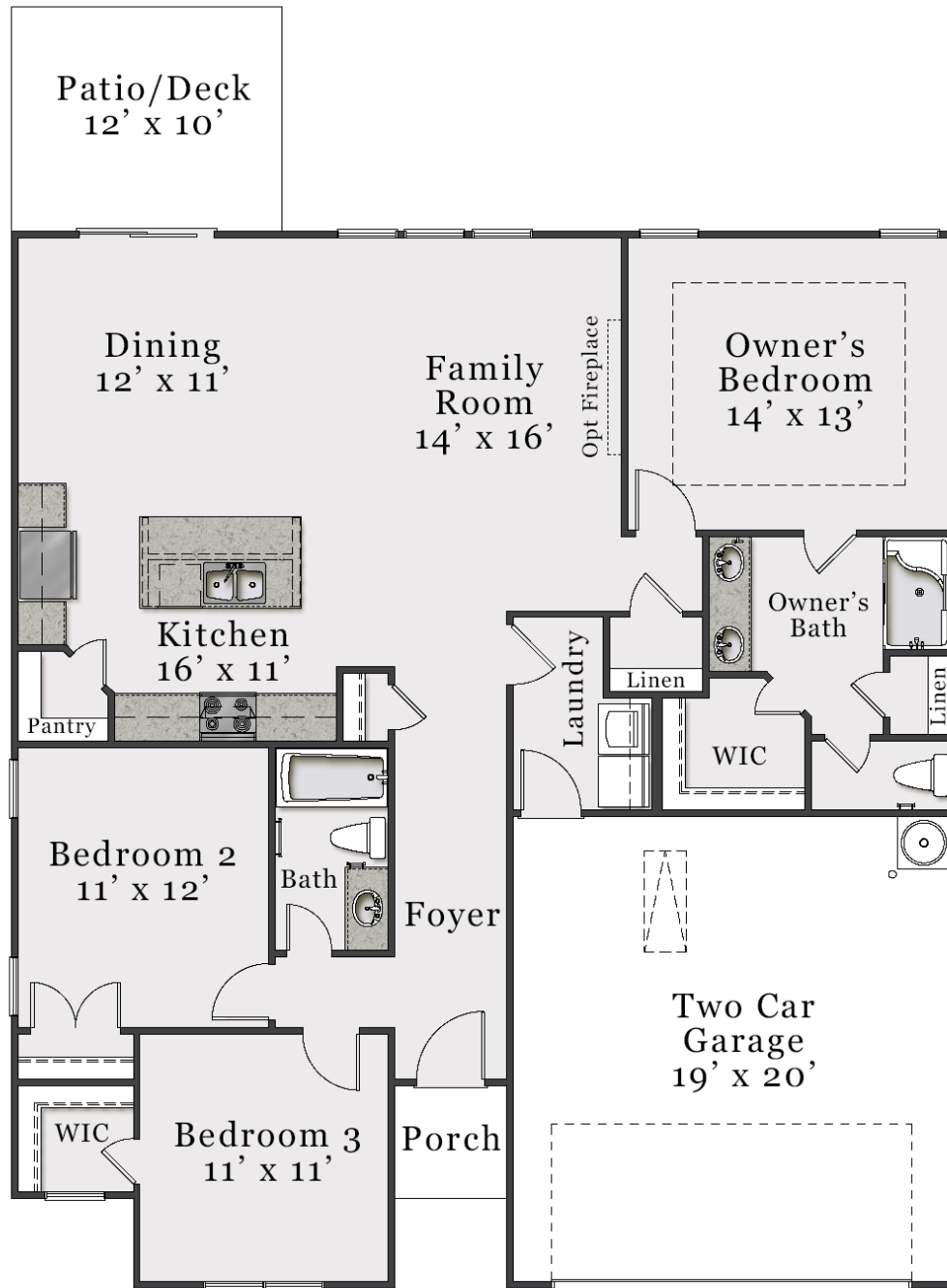
*European*

1,492 sq. ft.



A PERCENTAGE OF EVERY HOME SOLD GOES TO  
SUPPORT ALZHEIMER'S RESEARCH AND CARE.

# First Floor

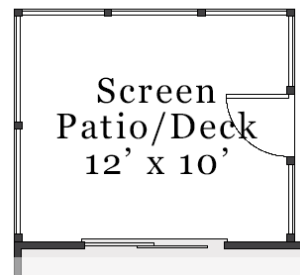


The floorplan shown is the Craftsman elevation.  
Other elevations are similar but may include minor layout and square footage differences.

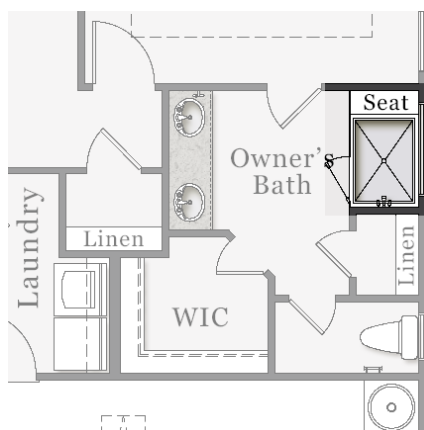
# Plan Options



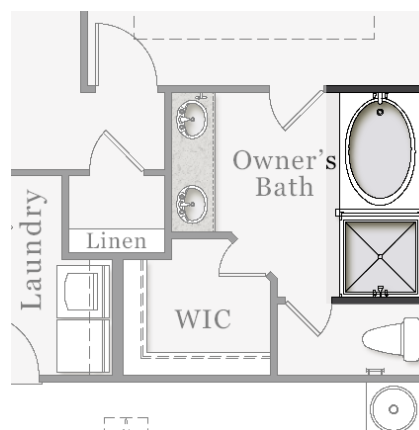
**Opt. Covered Patio/Deck**



**Opt. Screened Patio/Deck**



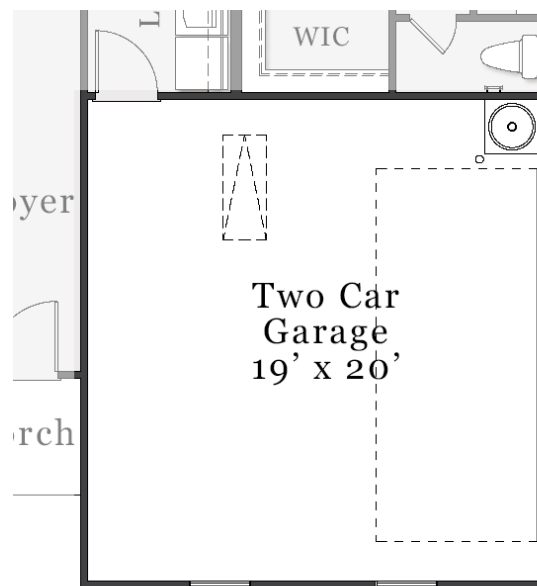
**Opt. Shower in Owner's Bath**



**Opt. Deluxe Owner's Bath**

The floorplan shown is the Craftsman elevation.  
Other elevations are similar but may include minor layout and square footage differences.

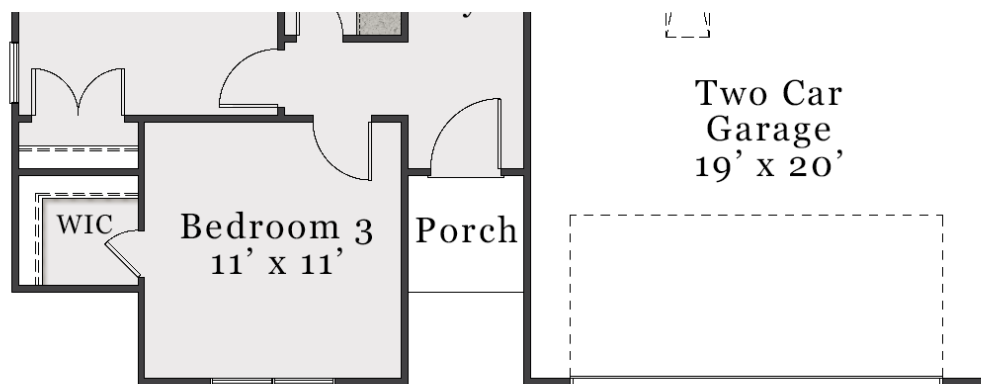
# Plan Options



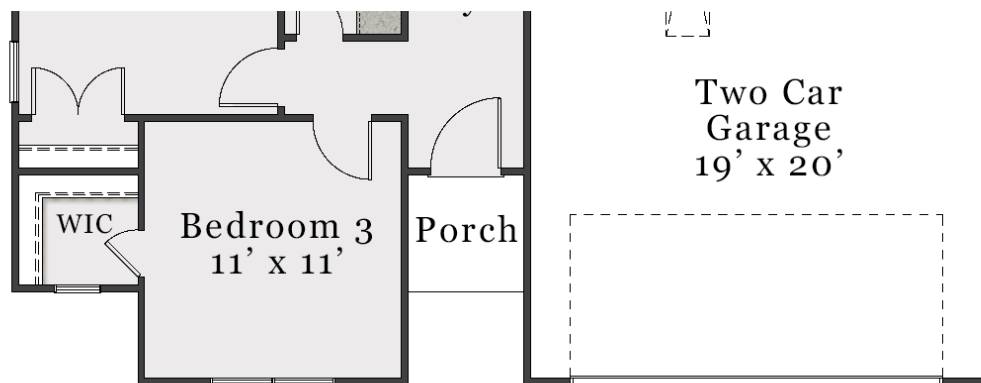
*Opt. Side Load Garage*

The floorplan shown is the Craftsman elevation.  
Other elevations are similar but may include minor layout and square footage differences.

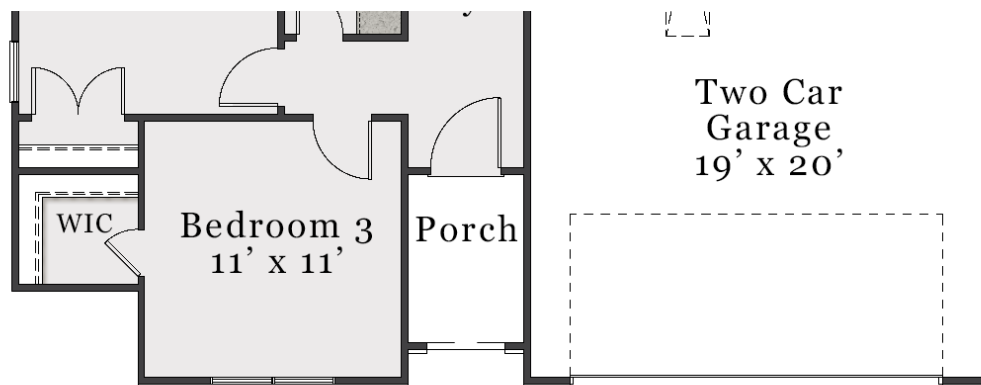
# Elevation Specific Base Floors



Classic First Floor



Coastal First Floor



European First Floor

Plans and elevations are artist's renderings only and used for marketing purposes. Stated dimensions and square footage are approximate and should not be used as representation of the home's precise or actual size. McKee Homes reserves the right to make changes to these floor plans, specifications, dimensions, designs, features and elevations without prior notice. We may need to substitute equipment, materials and appliances with items of equal or higher value at our own discretion. Floor plans are the copyright protected property of McKee Homes. © 2021 McKee Homes. All rights reserved.