

## The Nelson 2020

Bedrooms: 3-4  
Baths: 2.5-3.5



*Craftsman*

2,363 sq. ft.



*Classic*

2,363 sq. ft.



*Coastal*

2,374 sq. ft.



*European*

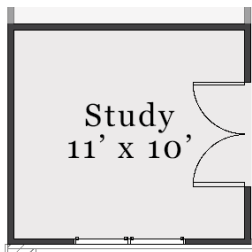
2,374 sq. ft.

A PERCENTAGE OF EVERY HOME SOLD GOES TO  
SUPPORT ALZHEIMER'S RESEARCH AND CARE.

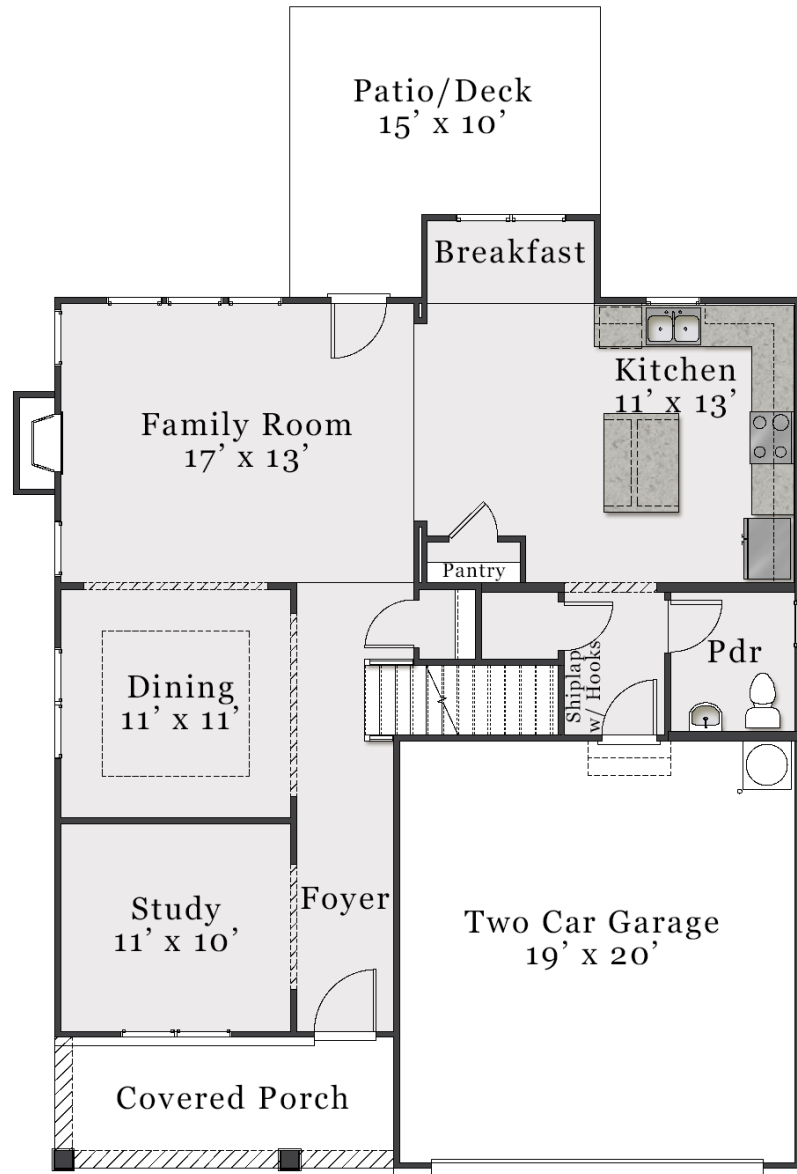
# First Floor



*Opt. Covered Patio*

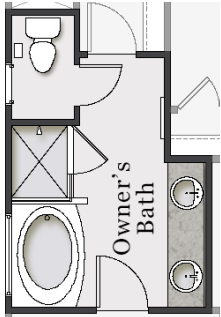


*Opt. Study Double Doors*

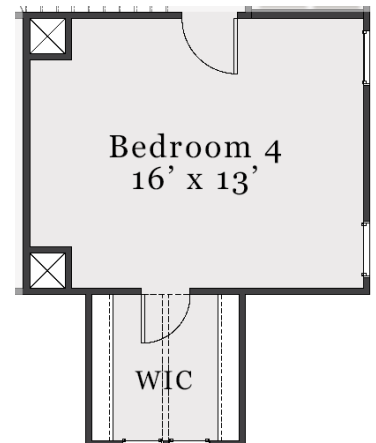
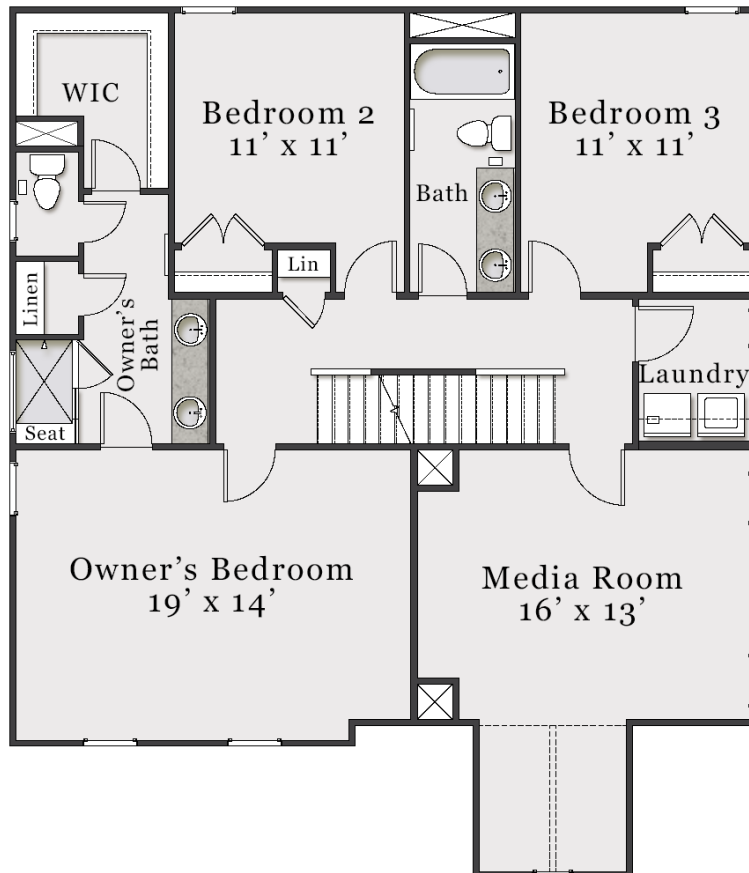


The floorplan shown is the Craftsman elevation.  
Other elevations are similar but may include minor layout and square footage differences.

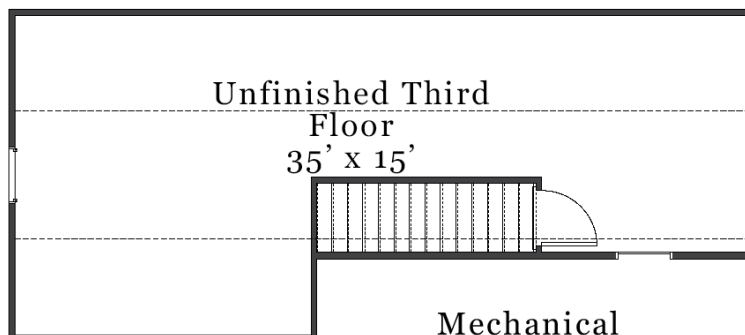
# Second & Third Floor



*Opt. Deluxe Owner's Bath*



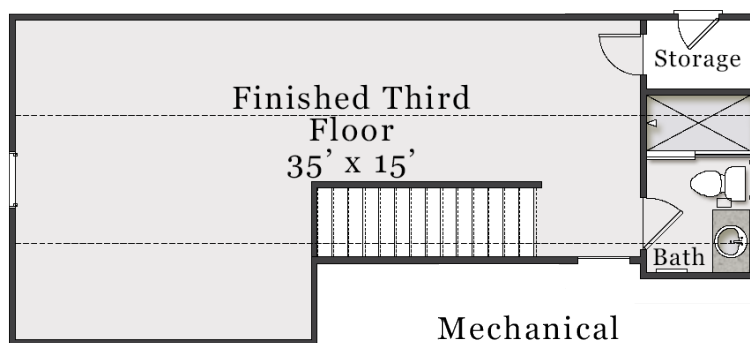
*Opt. Bedroom 4*



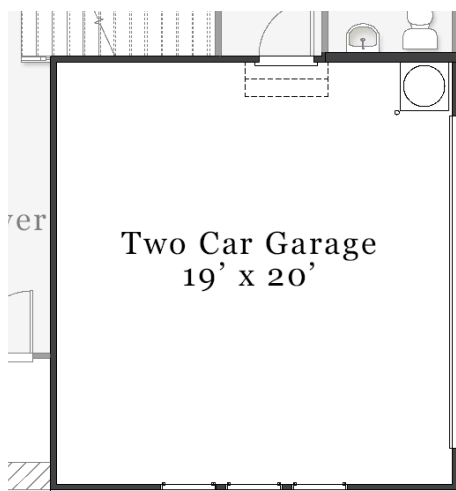
*Unfinished 3rd Floor (Approx. 456 sq. ft. unfinished)*

The floorplan shown is the Craftsman elevation.  
Other elevations are similar but may include minor layout and square footage differences.

# Plan Options



**Opt. Finished 3rd Floor with Full Bath (Approx. 456 sq. ft.)**



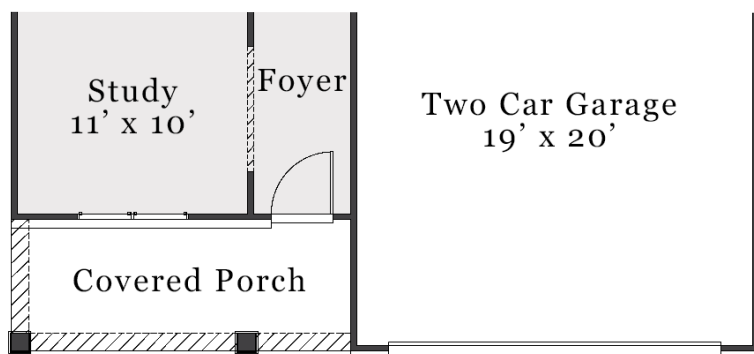
**Opt. Side Load Garage**



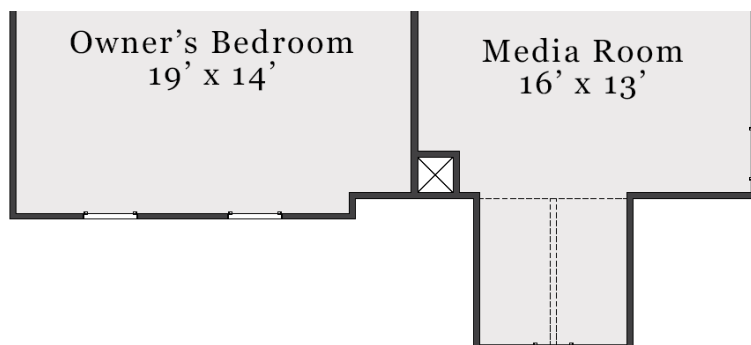
**Opt. Third Bay Garage**

The floorplan shown is the Craftsman elevation.  
Other elevations are similar but may include minor layout and square footage differences.

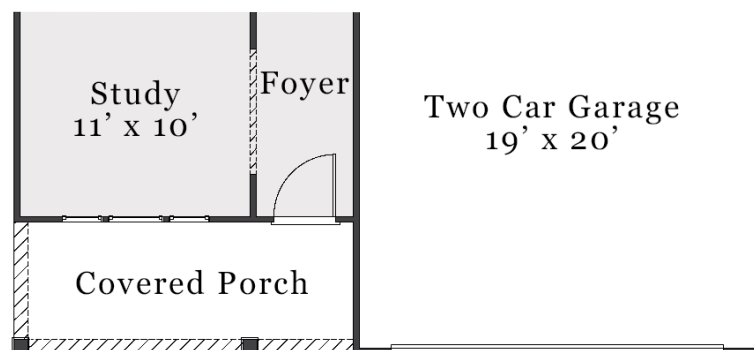
# Elevation Specific Base Floors



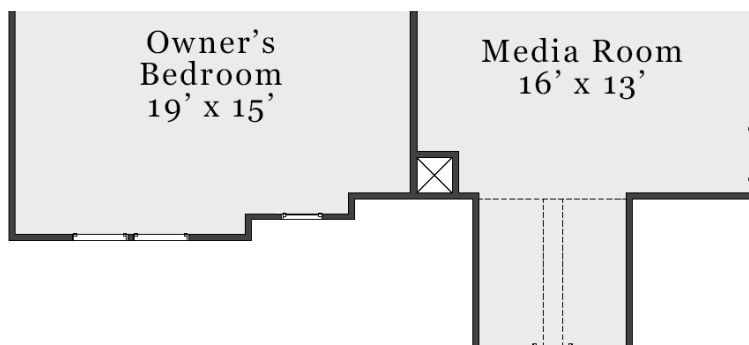
*Classic First Floor*



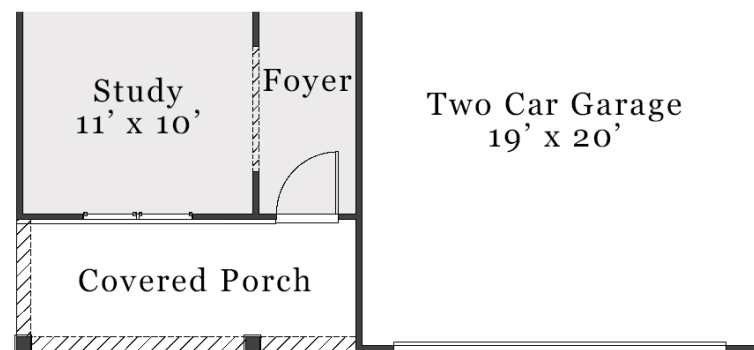
*Classic Second Floor*



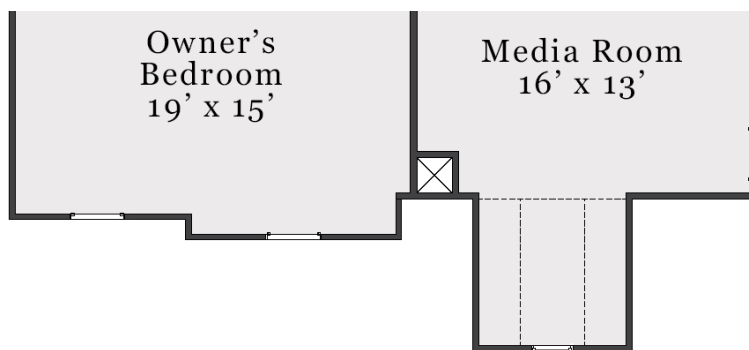
*Coastal First Floor*



*Coastal Second Floor*



*European First Floor*



*European Second Floor*