

The Mallard 2020

Bedrooms: 3
Baths: 2-3



Craftsman

1,502 sq. ft.



Classic

1,502 sq. ft.



Coastal

1,502 sq. ft.



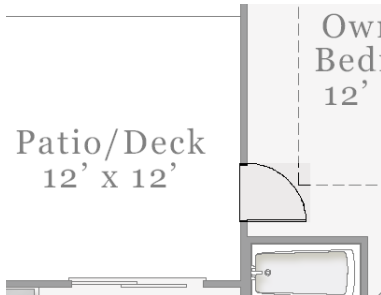
European

1,502 sq. ft.

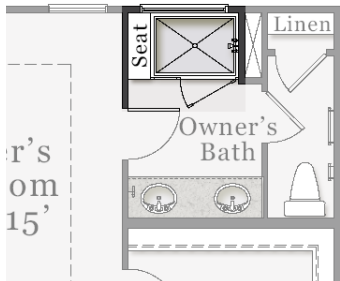


A PERCENTAGE OF EVERY HOME SOLD GOES TO
SUPPORT ALZHEIMER'S RESEARCH AND CARE.

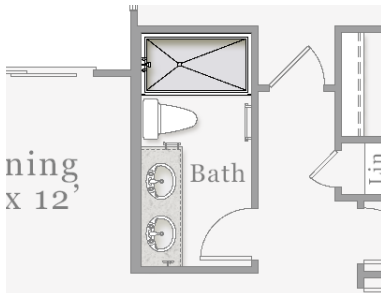
First Floor



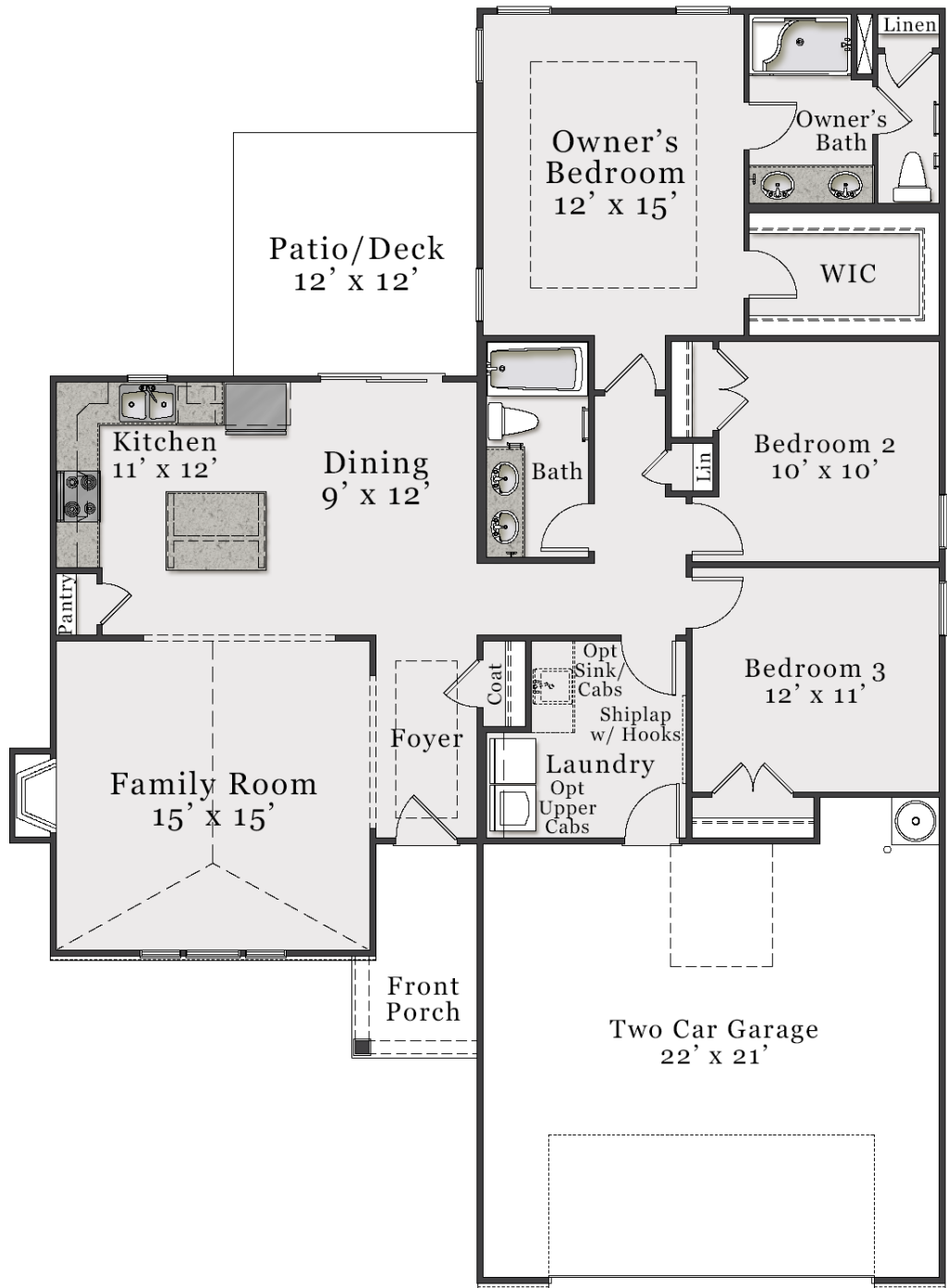
Opt. Patio Door in Owner's Bedroom



Opt. Shower at Owner's Bath

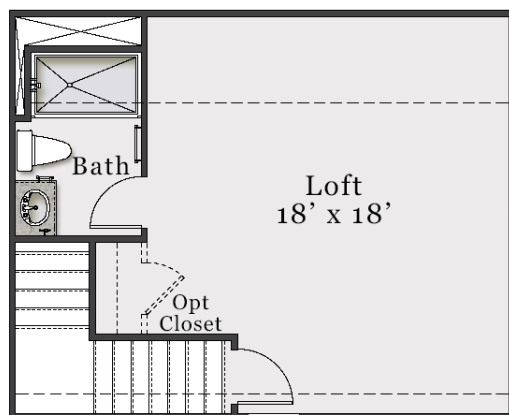


Opt. Shower in Bath 2

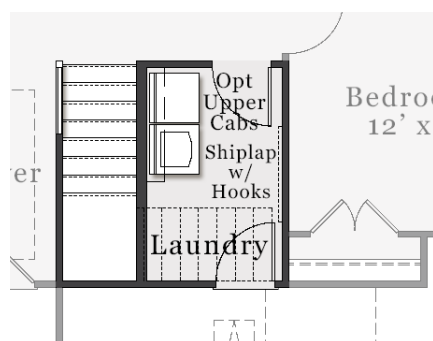


The floorplan shown is the Craftsman elevation.
Other elevations are similar but may include minor layout and square footage differences.

Optional Second Floor



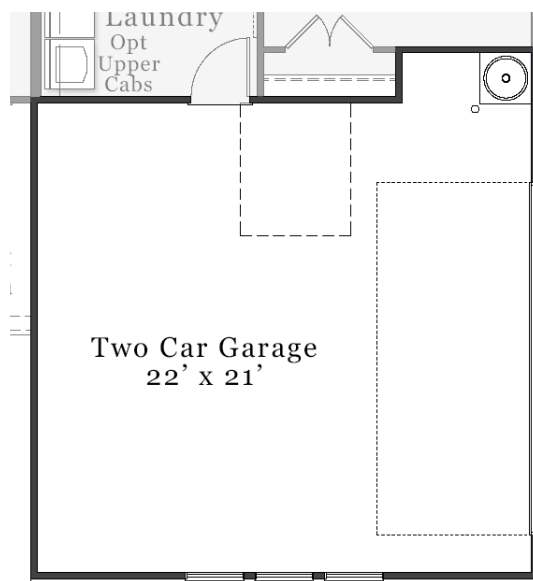
Opt. Second Floor (Approx. 376 sq. ft.)



Opt. Stairs to Second Floor

The floorplan shown is the Craftsman elevation.
Other elevations are similar but may include minor layout and square footage differences.

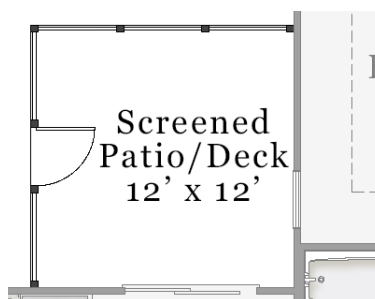
Plan Options



Opt. Side Load Garage



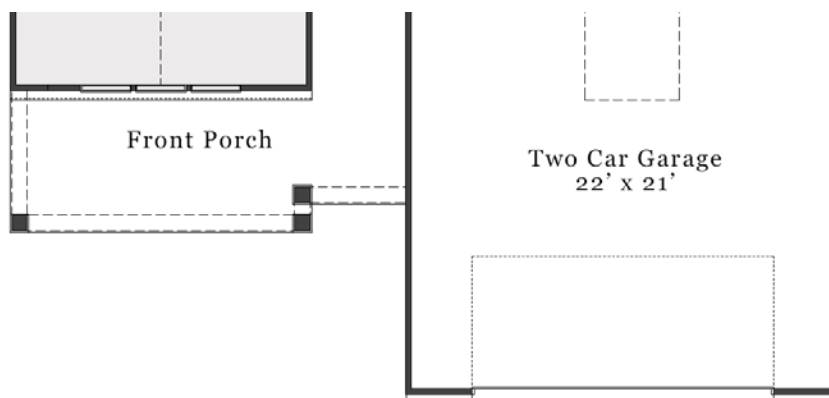
Opt. Covered Patio/Deck



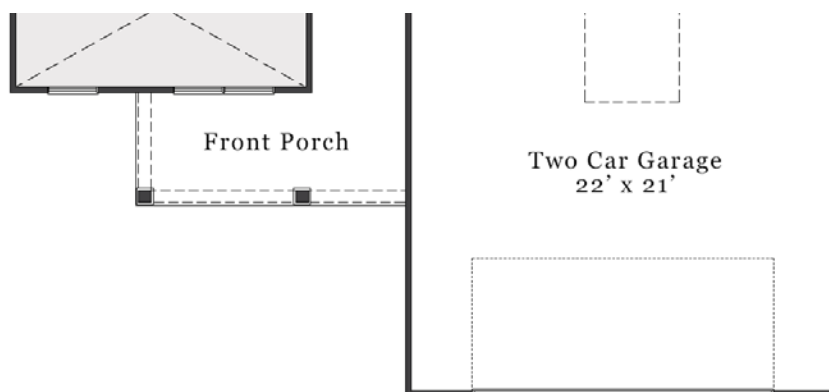
Opt. Screened Patio/Deck

The floorplan shown is the Craftsman elevation.
Other elevations are similar but may include minor layout and square footage differences.

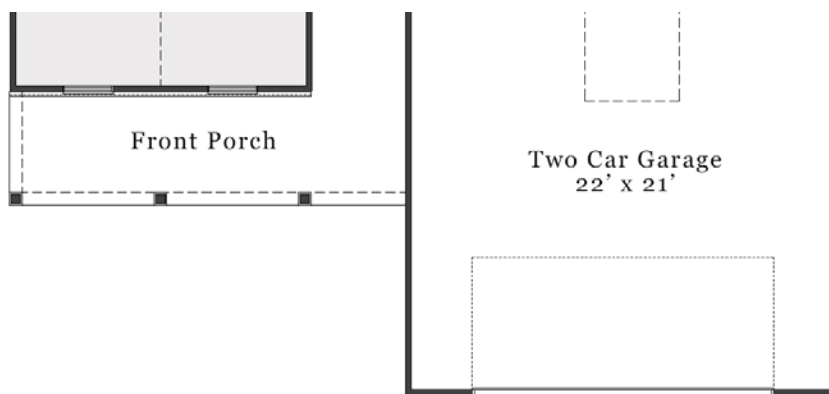
Elevation Specific Base Floors



Classic First Floor



Coastal First Floor



European First Floor