

The Dalton 2020

Bedrooms: 3
Baths: 2.5



Craftsman

1,807 sq. ft.



Classic

1,790 sq. ft.



Coastal

1,797 sq. ft.



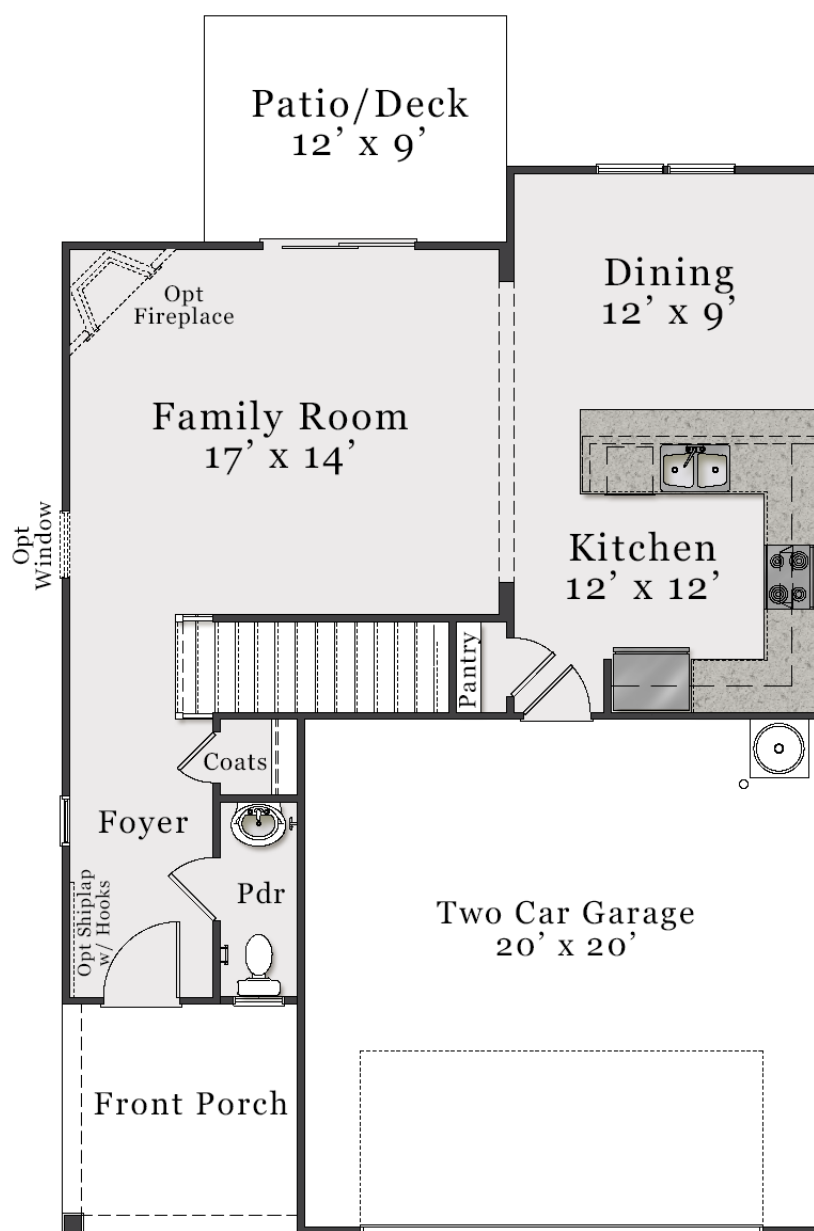
European

1,812 sq. ft.



A PERCENTAGE OF EVERY HOME SOLD GOES TO
SUPPORT ALZHEIMER'S RESEARCH AND CARE.

First Floor

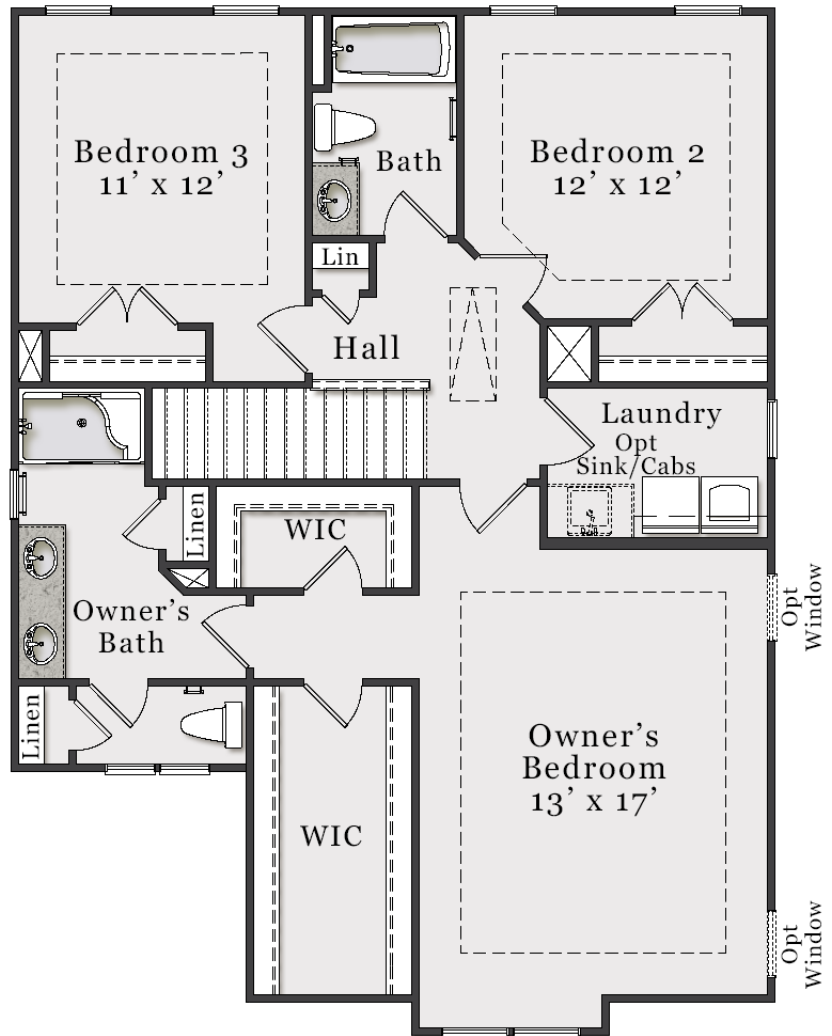


The floorplan shown is the Craftsman elevation.
Other elevations are similar but may include minor layout and square footage differences.

Second Floor

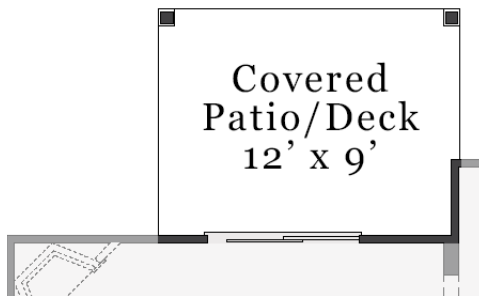


Opt. Deluxe Owner's Bath

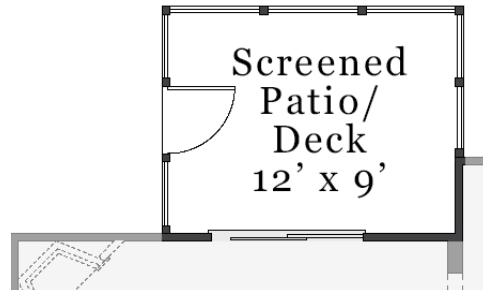


The floorplan shown is the Craftsman elevation.
Other elevations are similar but may include minor layout and square footage differences.

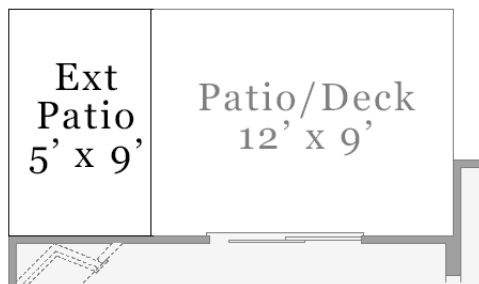
Plan Options



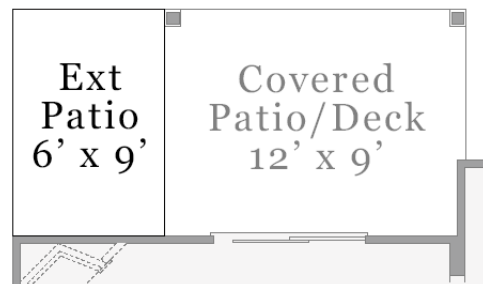
Opt. Covered Patio/Deck



Opt. Screened Patio/Deck



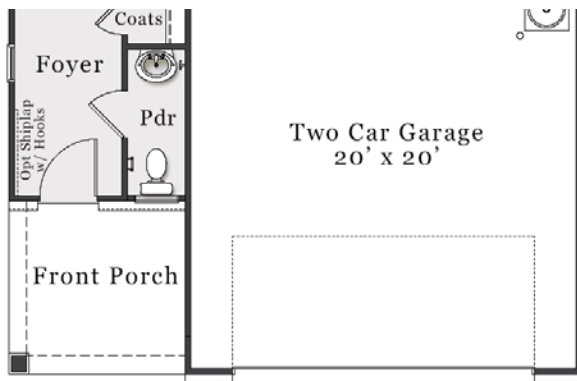
Opt. Extended Patio



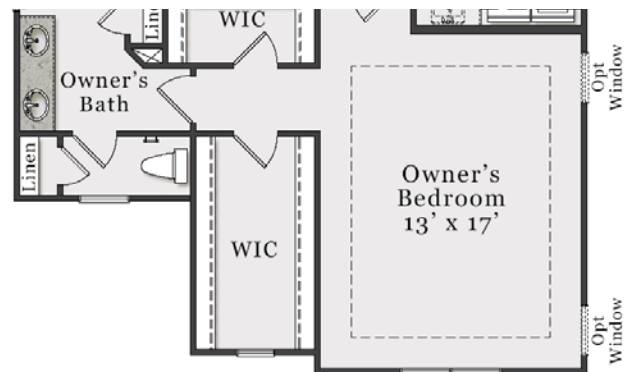
*Opt. Extended Patio with
Covered or Screened Patio/Deck*

The floorplan shown is the Craftsman elevation.
Other elevations are similar but may include minor layout and square footage differences.

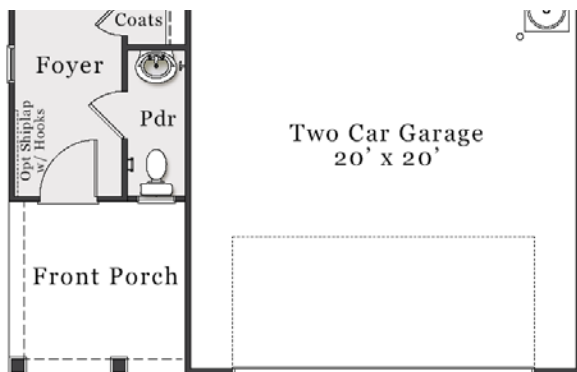
Elevation Specific Base Floors



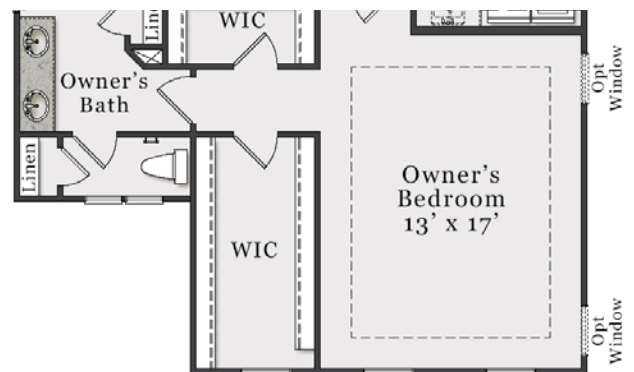
Classic First Floor



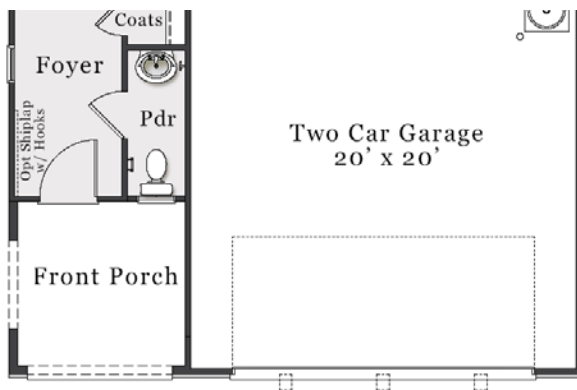
Classic Second Floor



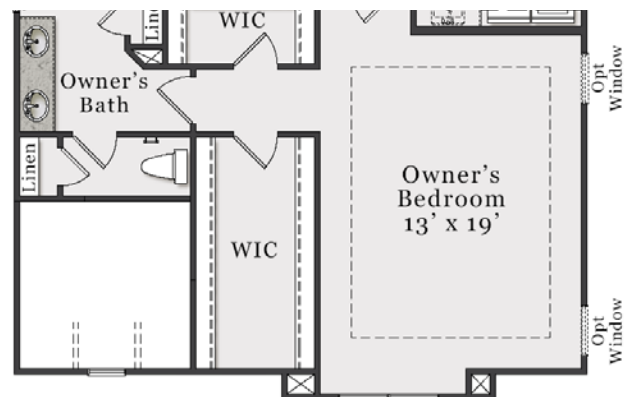
Coastal First Floor



Coastal Second Floor



European First Floor



European Second Floor