



THE REDWOOD AT STILLCREEK

3340 North 3275 West
Plain City, UT, 84404



VISIONARYHOMES.COM



FARMHOUSE



TRADITIONAL W/STUCCO



Scan for more info

ABOUT THE PLAN

Open & airy, light & bright, the Redwood design is where you will find warmth and comfort throughout your home. This home floor plan comes with 3 bedrooms, 2.5 bathrooms, and 2,282 total square feet of wonderful space to call your own. As you walk into the Redwood, you are welcomed by beautiful exterior columns with unique and attractive exterior architectural styles available to suit your preference. The main living area and kitchen are open and inviting - perfect for family time and entertaining. The upper level of the Redwood features lots of space, a large loft, 3 bedrooms, and two bathrooms. Connected to the beautiful primary bedroom, you'll be thrilled to find a massive walk-in closet, a spacious primary bathroom, and closet space throughout. The Redwood truly is a floor plan that was designed with you in mind - Built for Living, Built for You.

Call or text to make an appointment today!
435-485-3954



3 Bedrooms



2.5 Baths



2-3 Car Garage



2,216 Finished Sq. Ft.



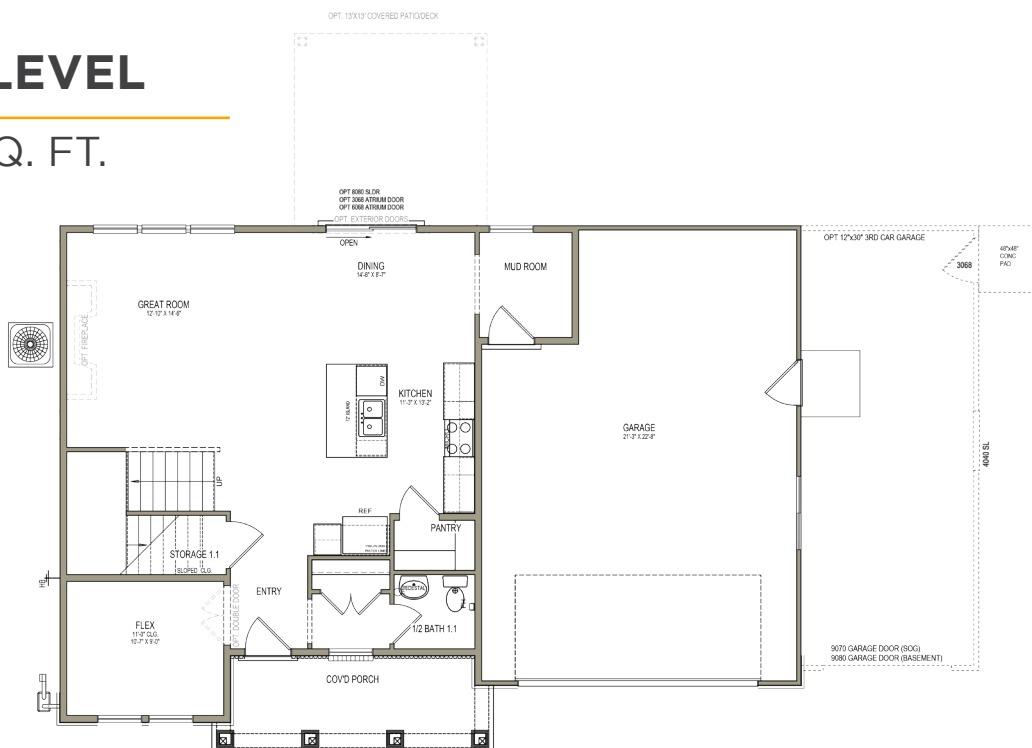
OFFICIAL
HOME BUILDER
OF THE
UTAH JAZZ

THE REDWOOD



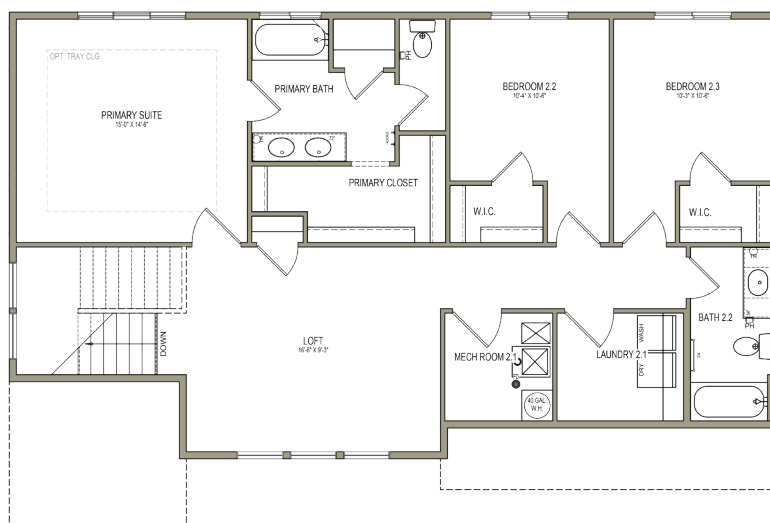
MAIN LEVEL

920 SQ. FT.



UPPER LEVEL

1,295 SQ. FT.



****No basement available in this community***



3340 N 3270 W, Plain City, UT, 84404 | visionaryhomes.com | **435.485.3954**