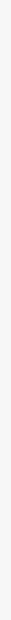


LIFESTYLE
SERIES
PERSONALIZED
PACKAGES

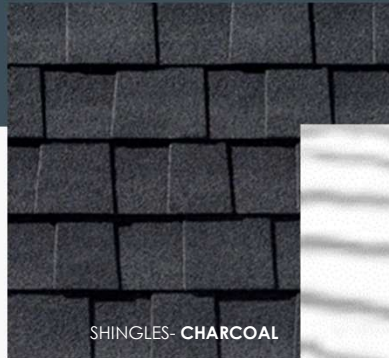


EXTERIOR PACKAGES

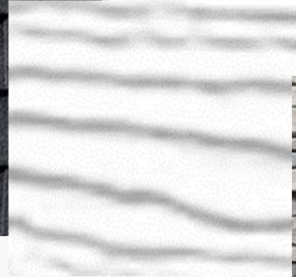
MAIN SIDING COLOR (LAP)
SLATE



ACCENT SIDING COLOR (SHAKES
OR BOARD AND BATTEN)
ASPEN WHITE



SHINGLES- CHARCOAL



GARAGE DOOR COLOR- WHITE



EXTERIOR STONE-
PER SPECIFIC PLANS/ ELEVATIONS *



FRONT DOOR COLOR OPTIONS
BLACK MAGIC SW6991

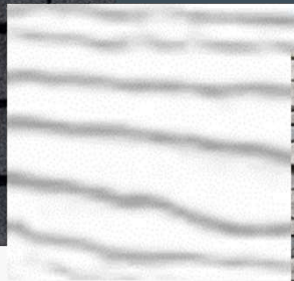
MAIN SIDING COLOR (LAP)
SLATE



ACCENT SIDING COLOR (SHAKES
OR BOARD AND BATTEN)
SLATE



SHINGLES- CHARCOAL



GARAGE DOOR COLOR- WHITE



EXTERIOR STONE-
PER SPECIFIC PLANS/ ELEVATIONS *



FRONT DOOR COLOR OPTIONS
BLACK MAGIC SW6991

MAIN SIDING COLOR (LAP)
ASPEN WHITE



ACCENT SIDING COLOR (SHAKES
OR BOARD AND BATTEN)
SLATE



SHINGLES- **CHARCOAL**



GARAGE DOOR COLOR- **WHITE**



EXTERIOR STONE-
PER SPECIFIC PLANS/ ELEVATIONS *



FRONT DOOR COLOR
BLACK MAGIC SW6991

MAIN SIDING COLOR (LAP)
ASPEN WHITE



ACCENT SIDING COLOR (SHAKES
OR BOARD AND BATTEN)
ASPEN WHITE



SHINGLES- CHARCOAL



GARAGE DOOR COLOR- WHITE



EXTERIOR STONE-
PER SPECIFIC PLANS/ ELEVATIONS *



FRONT DOOR COLOR
BLACK MAGIC SW6991

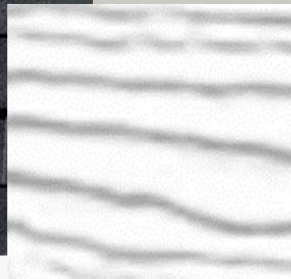
MAIN SIDING COLOR (LAP)
CARBON



ACCENT SIDING COLOR (SHAKES
OR BOARD AND BATTEN)
DRIFTWOOD



SHINGLES- **CHARCOAL**



GARAGE DOOR COLOR- **WHITE**



EXTERIOR STONE-
PER SPECIFIC PLANS/ ELEVATIONS *



FRONT DOOR COLOR
BLACK MAGIC SW6991

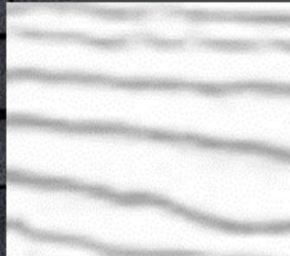
MAIN SIDING COLOR (LAP)
CARBON



ACCENT SIDING COLOR (SHAKES
OR BOARD AND BATTEN)
CARBON



SHINGLES- **CHARCOAL**



GARAGE DOOR COLOR- **WHITE**



EXTERIOR STONE-
PER SPECIFIC PLANS/ ELEVATIONS *



FRONT DOOR COLOR
BLACK MAGIC SW6991

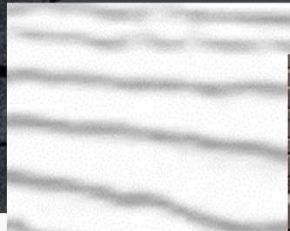
MAIN SIDING COLOR (LAP)
DRIFTWOOD



ACCENT SIDING COLOR (SHAKES
OR BOARD AND BATTEN)
CARBON



SHINGLES- **CHARCOAL**



GARAGE DOOR COLOR- **WHITE**



EXTERIOR STONE-
PER SPECIFIC PLANS/ ELEVATIONS *

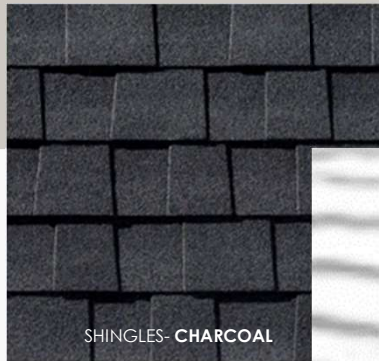


FRONT DOOR COLOR
BLACK MAGIC SW6991

MAIN SIDING COLOR (LAP)
DRIFTWOOD



ACCENT SIDING COLOR (SHAKES
OR BOARD AND BATTEN)
DRIFTWOOD



SHINGLES- CHARCOAL



GARAGE DOOR COLOR- WHITE



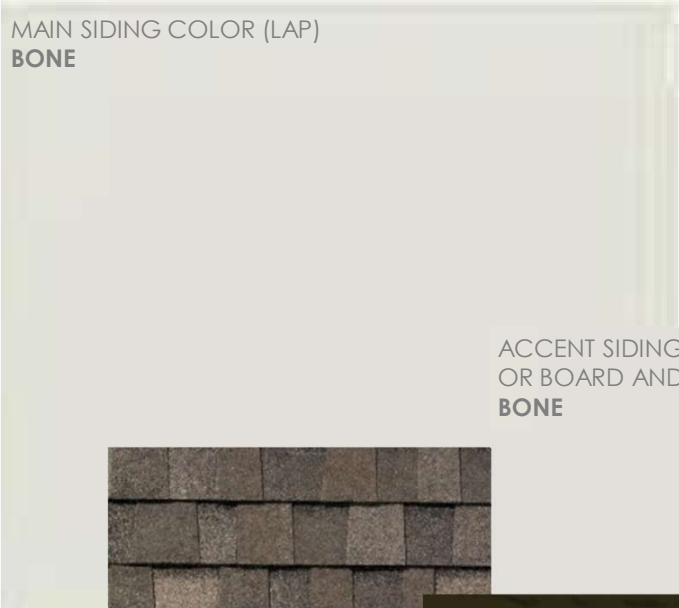
EXTERIOR STONE-
PER SPECIFIC PLANS/ ELEVATIONS *



FRONT DOOR COLOR
BLACK MAGIC SW6991



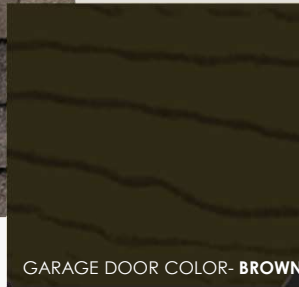
MAIN SIDING COLOR (LAP)
BONE



ACCENT SIDING COLOR (SHAKES
OR BOARD AND BATTEN)
BONE



SHINGLES- WEATHERED WOOD



GARAGE DOOR COLOR- **BROWN**



EXTERIOR STONE-
PER SPECIFIC PLANS/ ELEVATIONS *



FRONT DOOR COLOR
BLACK FOX SW7020



MAIN SIDING COLOR (LAP)
CANYON



ACCENT SIDING COLOR (SHAKES
OR BOARD AND BATTEN)
BONE



SHINGLES- WEATHERED WOOD



GARAGE DOOR COLOR- **BROWN**



EXTERIOR STONE-
PER SPECIFIC PLANS/ ELEVATIONS *



FRONT DOOR COLOR
BLACK FOX SW7020



MAIN SIDING COLOR (LAP)
CANYON



ACCENT SIDING COLOR (SHAKES
OR BOARD AND BATTEN)
CANYON



SHINGLES- WEATHERED WOOD



GARAGE DOOR COLOR- **BROWN**



EXTERIOR STONE-
PER SPECIFIC PLANS/ ELEVATIONS *



FRONT DOOR COLOR
BLACK FOX SW7020

MAIN SIDING COLOR (LAP)
GRAPHITE



ACCENT SIDING COLOR (SHAKES
OR BOARD AND BATTEN)
CLAY



SHINGLES- WEATHERED WOOD



GARAGE DOOR COLOR- **BROWN**



EXTERIOR STONE-
PER SPECIFIC PLANS/ ELEVATIONS *



FRONT DOOR COLOR
BLACK FOX SW7020

MAIN SIDING COLOR (LAP)
GRAPHITE



ACCENT SIDING COLOR (SHAKES
OR BOARD AND BATTEN)
GRAPHITE



SHINGLES- WEATHERED WOOD



GARAGE DOOR COLOR- **BROWN**



EXTERIOR STONE-
PER SPECIFIC PLANS/ ELEVATIONS *



FRONT DOOR COLOR
BLACK FOX SW7020

MAIN SIDING COLOR (LAP)
CLAY



ACCENT SIDING COLOR (SHAKES
OR BOARD AND BATTEN)
GRAPHITE



SHINGLES- WEATHERED WOOD



GARAGE DOOR COLOR- **BROWN**



EXTERIOR STONE-
PER SPECIFIC PLANS/ ELEVATIONS *



FRONT DOOR COLOR
BLACK FOX SW7020

MAIN SIDING COLOR (LAP)
CLAY



ACCENT SIDING COLOR (SHAKES
OR BOARD AND BATTEN)
CLAY



SHINGLES- WEATHERED WOOD



GARAGE DOOR COLOR- **BROWN**



EXTERIOR STONE-
PER SPECIFIC PLANS/ ELEVATIONS *



FRONT DOOR COLOR
BLACK FOX SW7020



INCLUDED
**6-PANEL STEEL
TRADITIONS STEEL
TS210**



OPTIONAL
**FULL LITE
TRADITIONS STEEL
DOOR
TS-118-LE**

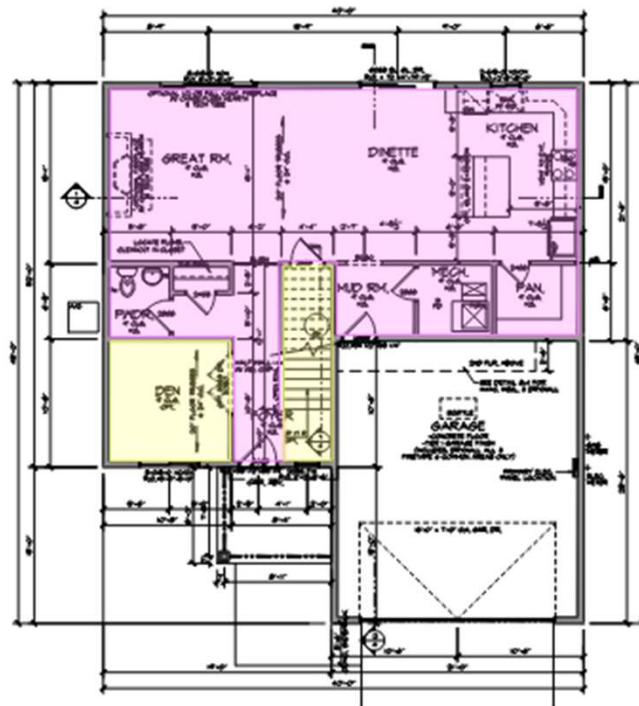


OPTIONAL
**HALF LITE
PROFILES HIGH
DEFINITION STEEL
980HD-LE**

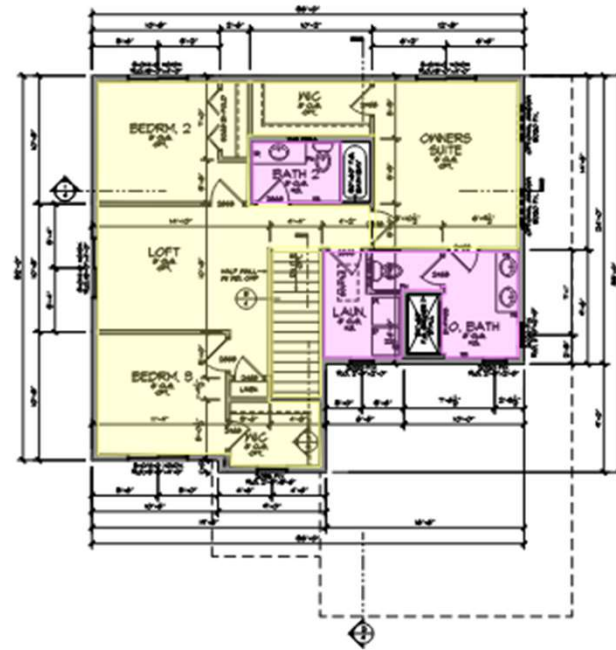
DESIGN PACKAGES

CARPET

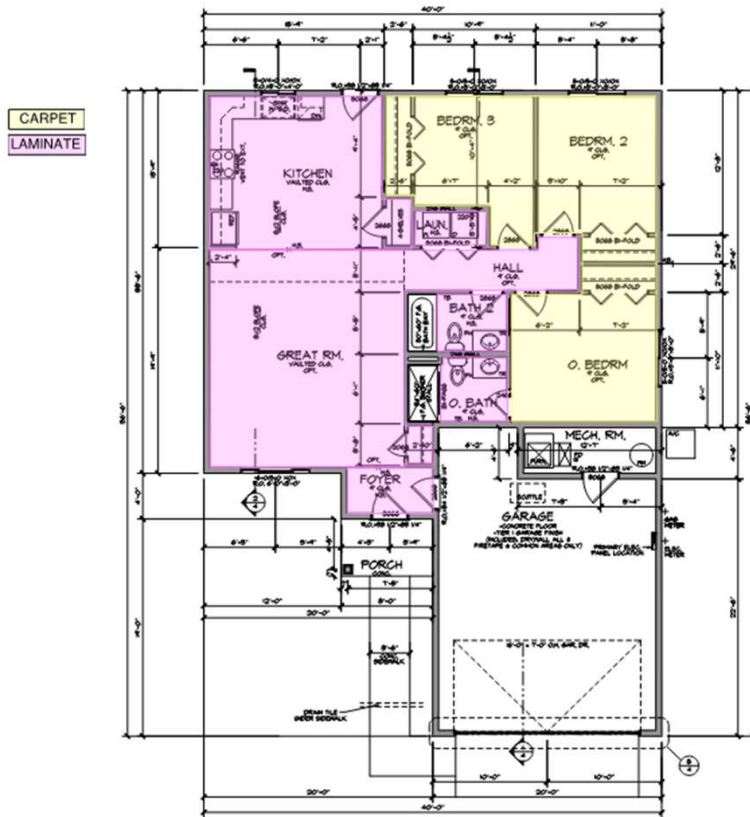
LAMINATE



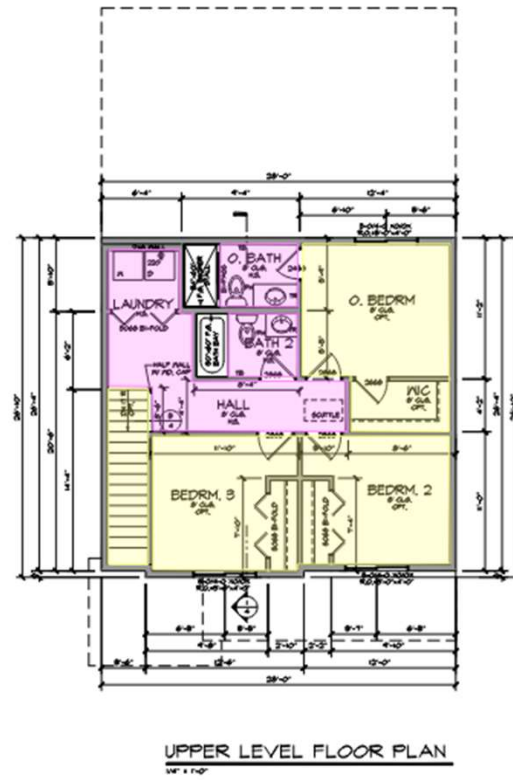
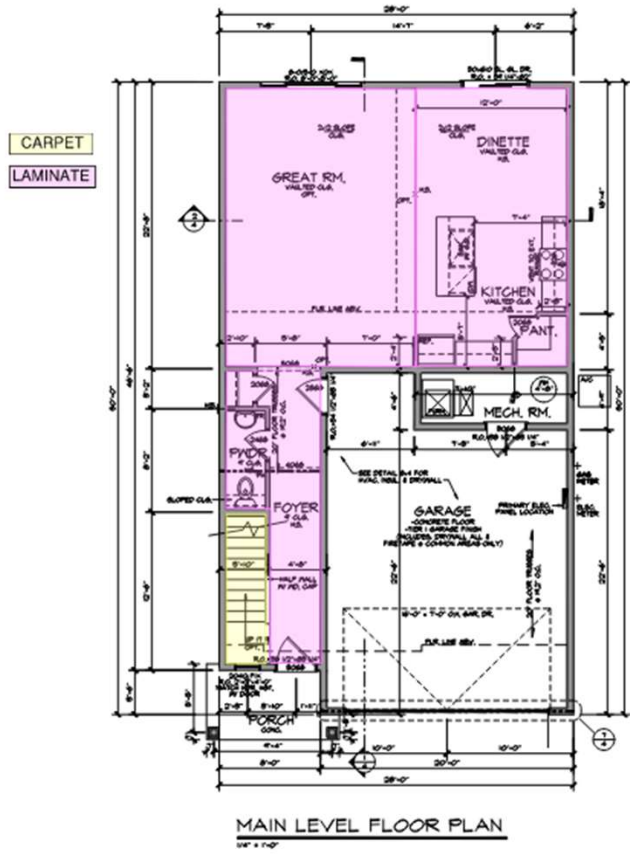
MAIN LEVEL FLOOR PLAN



UPPER LEVEL FLOOR PLAN

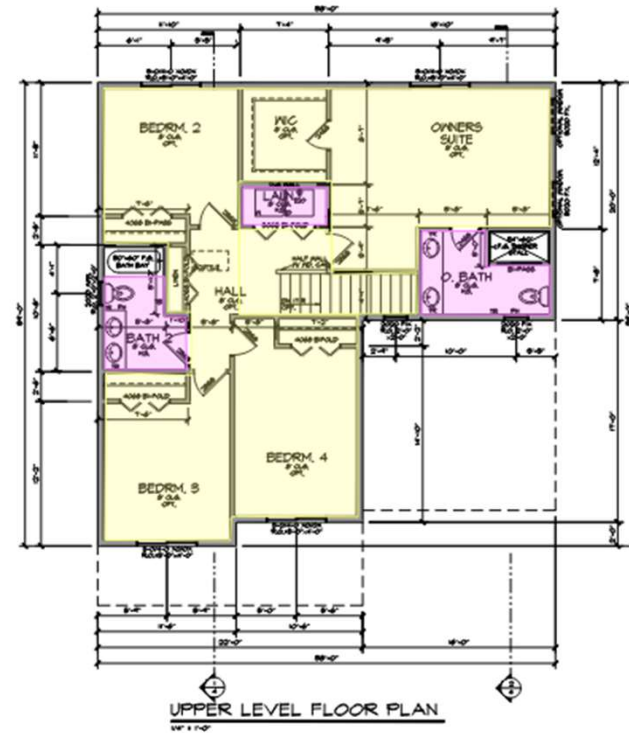
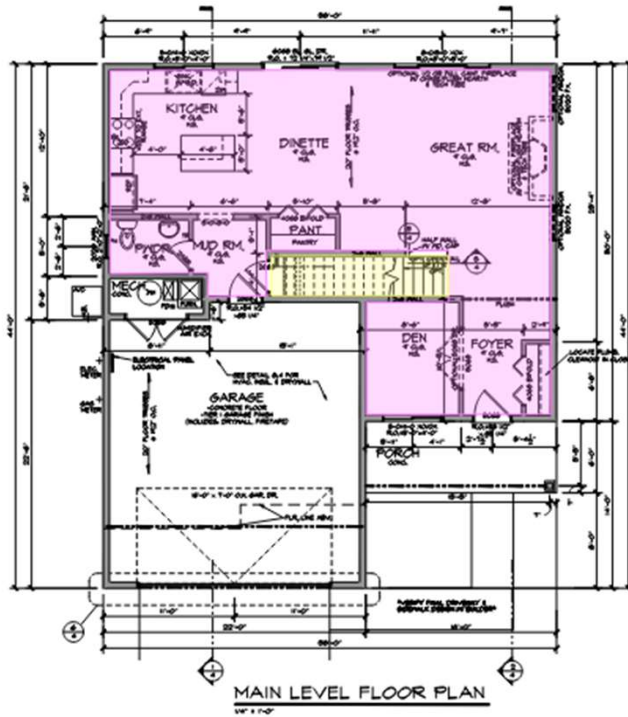


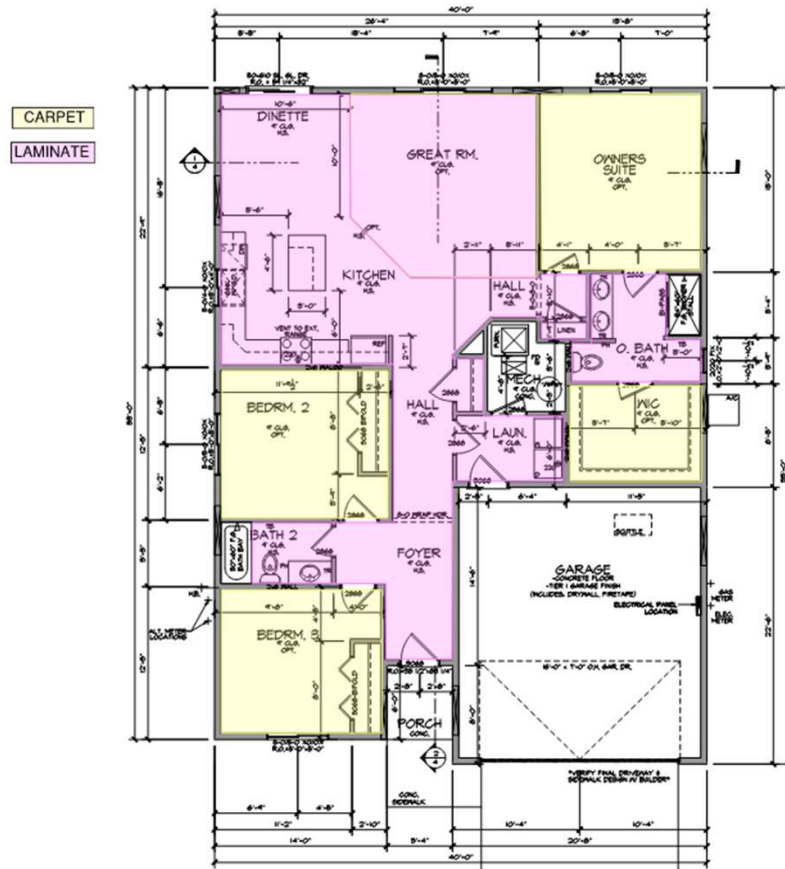
MAIN LEVEL FLOOR PLAN



CARPET

LAMINATE

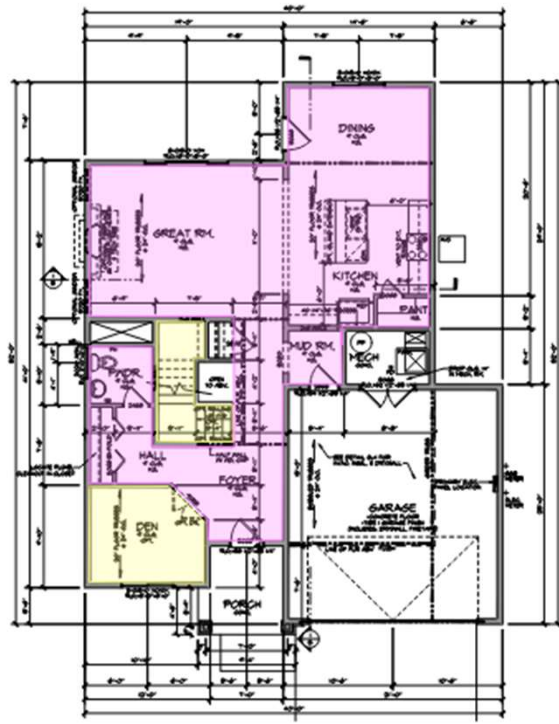




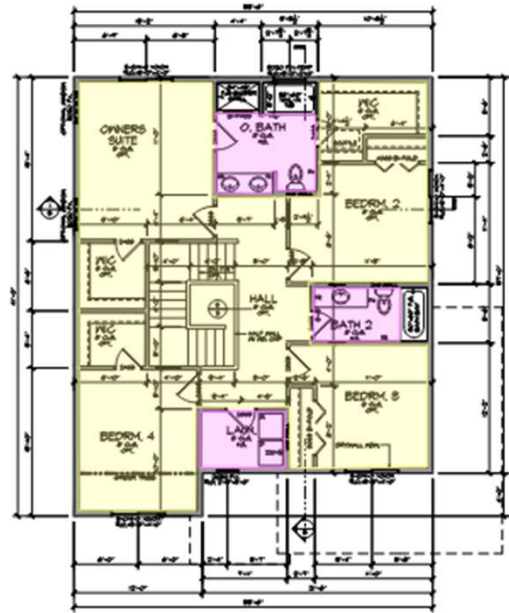
MAIN LEVEL FLOOR PLAN
1/4" = 1'-0"

CARPET

LAMINATE



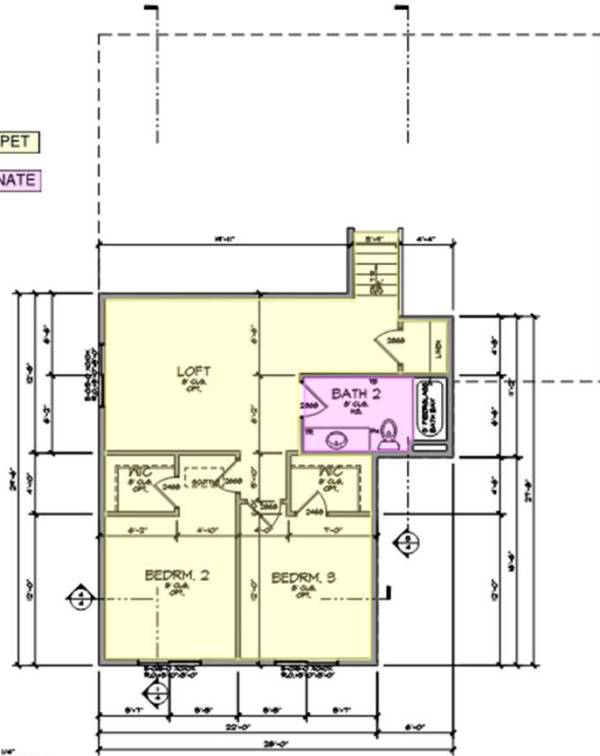
MAIN LEVEL FLOOR PLAN
10/1/10



UPPER LEVEL FLOOR PLAN
10/1/10

CARPET

LAMINATE

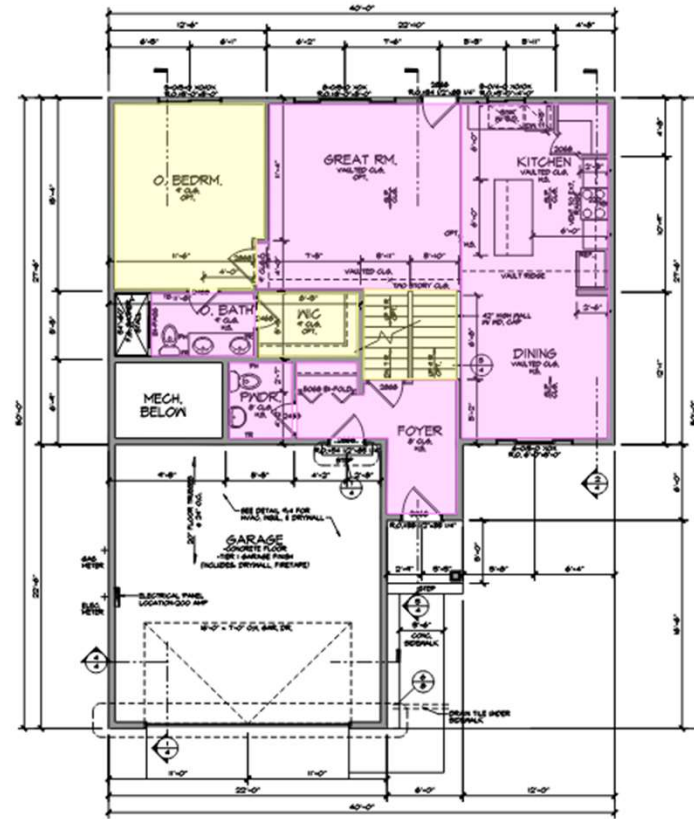


NOTE:

- WINDOWS: T&B
MAIN FLOOR CABINETS: 2 1/4" BASE+ 4 1/4"
- IDENTIFIED MEVA LOCKS AS REQ'D PER MC CODE
- CREANERS TO ADD BACKING FOR BATHROOM
- HARDWARE & FOLLOWING HEIGHTS PER LOCATION ON PLAN
- PAPER HOLDER (PH) @ 24" A.F.F.
- TOWEL RING (TR) @ 31" A.F.F.
- TOWEL BAR (TB) @ 40" A.F.F.
- ROBE HOOK (RH) @ 60" A.F.F.
- CLIP-TURNED PLANT FOR HALLING BAGGAGE AT ALL HALL TO OPEN CABINET LOCATIONS
- TV REFRIGERATOR OR PANTRY CABINET ON THE OPEN END OF THE CABINETS SHALL
- OPTIONALLY: ALL GLAZ. SPRING OF 1/2" OR GREATER SHALL REQUIRE INS. CHANNEL SPACED EVERY 16" REGULARLY @ 1/2" FOR SHEET
- WALL-POWER AIR EXCHANGER (WAE) ONLY @ DUAL ZONE W/ MANUAL DAMPER

UPPER LEVEL FLOOR PLAN

1/4" = 1'-0"

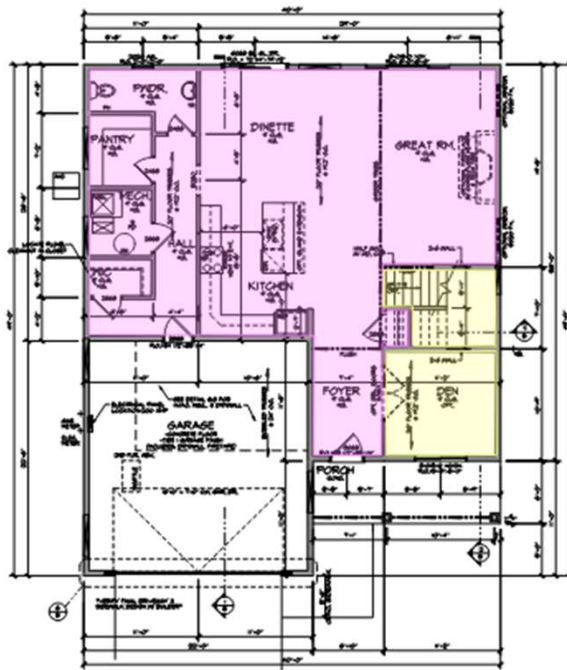


MAIN LEVEL FLOOR PLAN

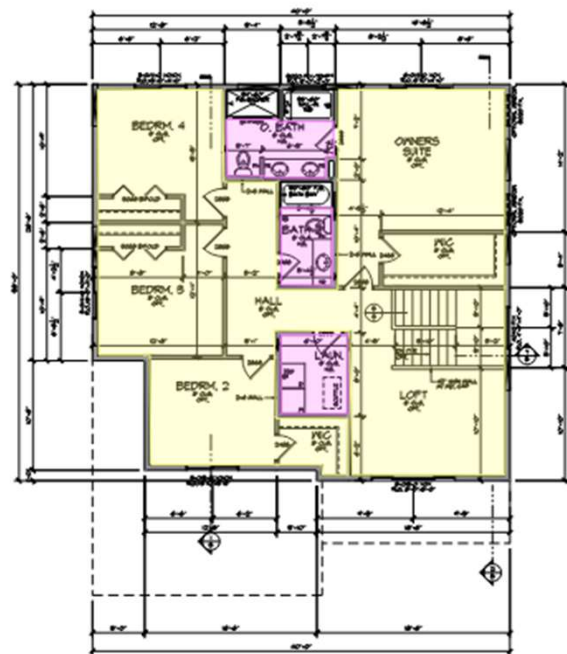
1/4" = 1'-0"

CARPET

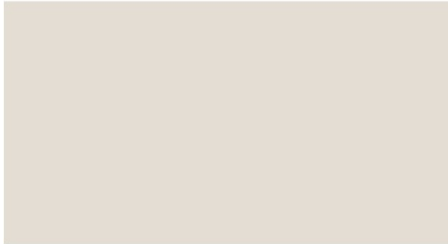
LAMINATE



MAIN LEVEL FLOOR PLAN
12/1/10



UPPER LEVEL FLOOR PLAN
12/1/10



WALL PAINT: SW7035 – AESTHETIC WHITE



SCOUT DOOR (SHAKER) / SLAB DRAWER
STYLE CABINETS

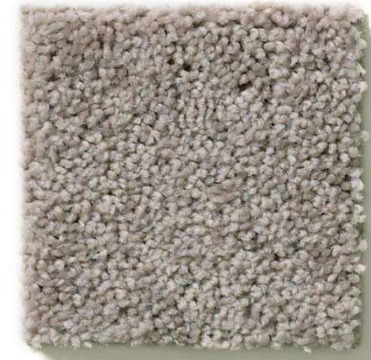
PAINTED- WHITE

KITCHEN AND ALL BATHROOMS



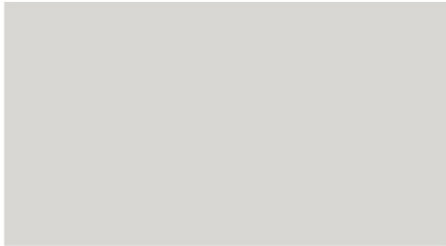
SHAW- OCEANFRONT

LUXURY VINYL PLANK: KITCHEN, DINING, GREAT
ROOM, FOYER, MUD, LAUNDRY, ALL BATHROOMS



SHAW – PERFECT TAUPE

CARPET: STAIRS, BEDROOMS, FINISHED LL (PER PLAN)



WALL PAINT: SW7029- AGREEABLE GRAY



SCOUT DOOR (SHAKER) / SLAB DRAWER
STYLE CABINETS

PAINTED- WHITE

KITCHEN AND ALL BATHROOMS



SHAW- DRIFTWOOD

LUXURY VINYL PLANK: KITCHEN, DINING, GREAT
ROOM, FOYER, MUD, LAUNDRY, ALL BATHROOMS



SHAW- PERFECT TAUPE

CARPET: STAIRS, BEDROOMS, FINISHED LL (PER PLAN)



WALL PAINT: SW7631- CITY LOFT



SCOUT DOOR (SHAKER) / SLAB DRAWER
STYLE CABINETS

PAINTED- WHITE

KITCHEN AND ALL BATHROOMS



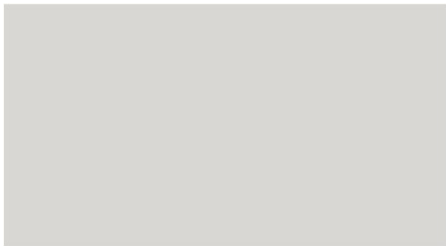
SHAW- SILVER DOLLAR

LUXURY VINYL PLANK: KITCHEN, DINING, GREAT
ROOM, FOYER, MUD, LAUNDRY, ALL BATHROOMS



SHAW- WEATHERED

CARPET: STAIRS, BEDROOMS, FINISHED LL (PER PLAN)



WALL PAINT: SW7671- ON THE ROCKS



SCOUT DOOR (SHAKER) / SLAB DRAWER
STYLE CABINETS

PAINTED- WHITE

KITCHEN AND ALL BATHROOMS



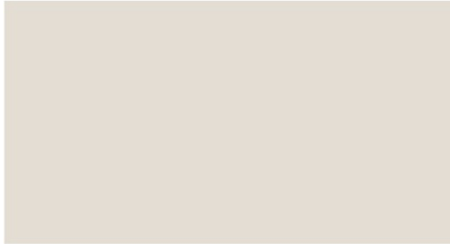
SHAW- OYSTER OAK

LUXURY VINYL PLANK: KITCHEN, DINING, GREAT
ROOM, FOYER, MUD, LAUNDRY, ALL BATHROOMS



SHAW- WEATHERED

CARPET: STAIRS, BEDROOMS, FINISHED LL (PER PLAN)



WALL PAINT: SW7035 – AESTHETIC WHITE



SCOUT DOOR (SHAKER) / SLAB DRAWER
STYLE CABINETS

STAINED- DOCKSIDE

KITCHEN AND ALL BATHROOMS



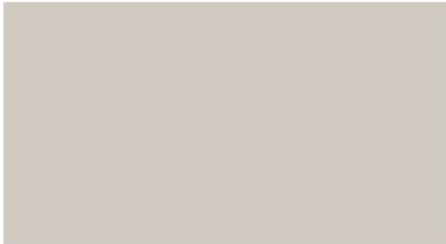
SHAW- OCEANFRONT

LUXURY VINYL PLANK: KITCHEN, DINING, GREAT
ROOM, FOYER, MUD, LAUNDRY, ALL BATHROOMS



SHAW – PERFECT TAUPE

CARPET: STAIRS, BEDROOMS, FINISHED LL (PER PLAN)



WALL PAINT: SW7029- AGREEABLE GRAY



SCOUT DOOR (SHAKER) / SLAB DRAWER
STYLE CABINETS

STAINED- DOCKSIDE

KITCHEN AND ALL BATHROOMS



SHAW- DRIFTWOOD

LUXURY VINYL PLANK: KITCHEN, DINING, GREAT
ROOM, FOYER, MUD, LAUNDRY, ALL BATHROOMS



SHAW- PERFECT TAUPE

CARPET: STAIRS, BEDROOMS, FINISHED LL (PER PLAN)



WALL PAINT: SW7631- CITY LOFT



SCOUT DOOR (SHAKER) / SLAB DRAWER
STYLE CABINETS

STAINED- DOCKSIDE

KITCHEN AND ALL BATHROOMS



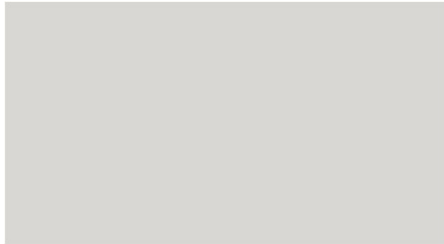
SHAW- SILVER DOLLAR

LUXURY VINYL PLANK: KITCHEN, DINING, GREAT
ROOM, FOYER, MUD, LAUNDRY, ALL BATHROOMS



SHAW- WEATHERED

CARPET: STAIRS, BEDROOMS, FINISHED LL (PER PLAN)



WALL PAINT: SW7671- ON THE ROCKS



SCOUT DOOR (SHAKER) / SLAB DRAWER
STYLE CABINETS

PAINTED- THAW

KITCHEN AND ALL BATHROOMS



SHAW- OYSTER OAK

LUXURY VINYL PLANK: KITCHEN, DINING, GREAT
ROOM, FOYER, MUD, LAUNDRY, ALL BATHROOMS



SHAW- WEATHERED

CARPET: STAIRS, BEDROOMS, FINISHED LL (PER PLAN)

FINISH PACKAGES



FINISH PACKAGE 1- CHROME - INCLUDED



FINISH PACKAGE 3 –NICKEL- OPTIONAL



FINISH PACKAGE 4 – BLACK- OPTIONAL

TILE OFFERINGS

OWNERS BATH SHOWER





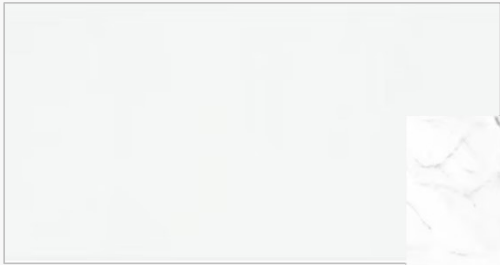
(INCLUDED IN 5' OWNERS SHOWER)

OPTION 1A 6 x 24 WANDERWISE PLANK- WW03



(INCLUDED IN 5' OWNERS SHOWER)

OPTION 1B 6 x 24 WANDERWISE PLANK- WW01



OPTION 2A 12 X 24 COMPOSITION-
CP01



OPTION 2B 12 X 24 COSTAR RECTANGLE-
CT76



OPTION 3A 12 X 24 PERPETUO POLISHED-
PT20



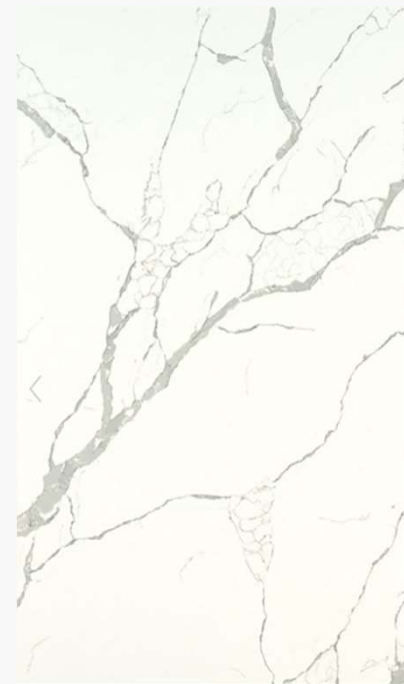
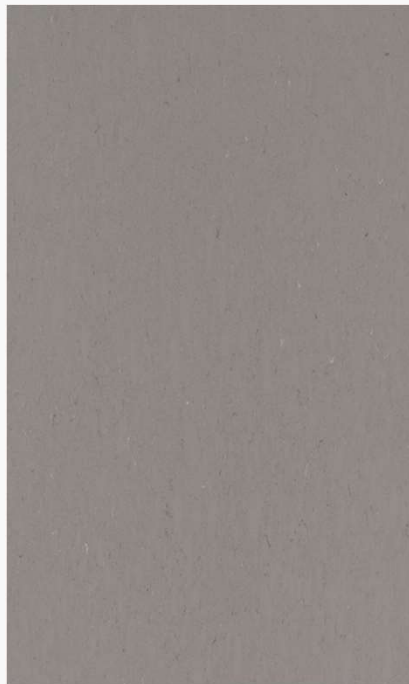
OPTION 3B 12 X 24 ORIGAMI HEX-
MU16

OWNERS BATH SHOWER- TILE OFFERINGS

COUNTERTOP OFFERINGS

KITCHEN AND BATH





OPTION 1 (INCLUDED)- KITCHEN AND BATHROOM QUARTZ SELECTION

OPTION 2A
FOSSIL GRAY QUARTZ

OPTION 2B
MACABO GRAY QUARTZ

OPTION 3
CALCATTÀ VENICE QUARTZ

OPTION 4
CALCATTÀ LAZA QUARTZ

COUNTERTOPS- KITCHEN AND BATH

KITCHEN (STANDARD AND GOURMET: 2 CM FROST WHITE QUARTZ- INCLUDED)

OPTIONAL KITCHEN COUNTERTOPS: 2 CM FOSSIL GRAY/ MACABO GRAY QUARTZ

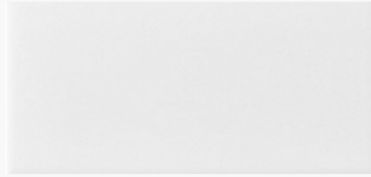
OPTIONAL KITCHEN COUNTERTOPS: 3CM CALCATTÀ VENICE/ CALCATTÀ LAZA

BATHS: 1.5 CM FROST WHITE QUARTZ (INCLUDED)

TILE OFFERINGS

KITCHEN BACKSPLASH





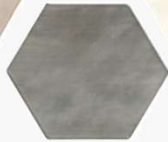
OPTION 1 (INCLUDED IN GOURMET KITCHEN)
3X6 COLOR WHEEL CLASSIC-
790



OPTION 2
3 X 12 STAGECRAFT PICKET- 790



OPTION 3A
4" HEX- MESMERIST- MM31



OPTION 3B
4" HEX- MESMERIST- MM3



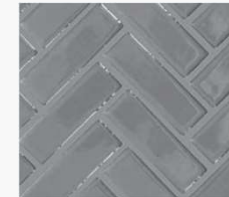
OPTION 3C
4" HEX- MESMERIST- MM30



OPTION 4A
1 X 3 LATTICE WEAVE-
COLOR WHEEL MOSAIC-
782



OPTION 4B
1 X 3 LATTICE WEAVE-
COLOR WHEEL MOSAIC-
790



OPTION 4C
1 x 3 HERRINGBONE-
COLOR WHEEL MOSAIC
782



OPTION 4D
1 X 3 HERRINGBONE-
COLOR WHEEL MOSAIC
790

KITCHEN BACKSPLASH- TILE OFFERINGS

APPLIANCE OFFERINGS

KITCHEN/ LAUNDRY





LARGE CAPACITY SIDE-BY-SIDE REFRIGERATOR

- 27 cu. ft.
- Fingerprint resistant finish
- Outside water and ice dispenser
- LED lighting
- Standard depth, 25 cu ft.



ELECTRIC FREESTANDING RANGE

- Self Clean mode
- 5 Cooking elements
- Storage Drawer
- SS Knobs



OVER-THE-RANGE MICROWAVE

- 1.6 Cubic Feet
- LED Display screen
- 300 CFM ventilation speed
- 1,000 Watt Power



DISHWASHER

- Adjustable Rack
- Quiet Operation
- Digital Water Leakage Sensor



FRENCH DOOR REFRIGERATOR

- Capacity – 27.0 cu. ft.
- Fingerprint Resistant Finish
- Standard Depth



FREESTANDING GAS RANGE

- Capacity – 6.0 cu. ft.
- Power Burner
- Griddle
- Wi-Fi Connectivity



FRENCH DOOR REFRIGERATOR

- All Around cooling
- Adjustable shelves
- Standard depth, 27 cu ft.



MICROWAVE

- Capacity - 1.9 cu. ft.
- Trim Kit - MA-TK8020TS (Stainless)
- 950 W Cooking Power

30" SMART SINGLE WALL OVEN

- Capacity 5.1 cu. ft.
- Wi-Fi Connectivity



VENT-A-HOOD

30" 430 CFM EXHAUST FAN

- Variable Speed
- Dimmable LED lighting



SLIDE-IN GAS RANGE

- Capacity – 6.0 cu. ft.
- Power Burner
- Griddle
- Wi-Fi Connectivity



DISHWASHER

- Adjustable Rack
- Quiet Operation
- Digital Water Leakage Sensor

PLUMBING OFFERINGS

KITCHEN



INCLUDED



OPTIONAL



LIGHTING PACKAGES



FRONT EXTERIOR



REAR EXTERIOR



BEDROOMS



STAIRWAY (PER PLAN)



FOYER



DINING (PER PLAN)



BATHROOMS (SIZED PER VANITY)



FRONT EXTERIOR



REAR EXTERIOR



BEDROOMS



FOYER



BATHROOMS (SIZED PER VANITY)



STAIRWAY (PER PLAN)



DINING



FRONT EXTERIOR



REAR EXTERIOR



FOYER



BEDROOMS



BATHROOMS (SIZED PER VANITY)



STAIRWAY (PER PLAN)



DINING



FRONT EXTERIOR



REAR EXTERIOR



FOYER



BEDROOMS



BATHROOMS



STAIRWAY (PER PLAN)



DINING (PER PLAN)



FRONT EXTERIOR



REAR EXTERIOR



BEDROOMS



FOYER



BATHROOMS



STAIRWAY (PER PLAN)



DINING

PENDANT LIGHT OFFERINGS



OPTION 1A



OPTION 1B



OPTION 2A



OPTION 2B



OPTION 3A



OPTION 3B



OPTION 4A



OPTION 4B

ADD 2 FOR STANDARD/ EXTENDED ISLAND- OPTIONAL

ADDITIONAL DETAILS



MILLWORK STAIN: DUSK (INCLUDED-
HANDRAIL PER PLAN AN IF OPEN RAILING
CHOSEN)



MANTEL: PAINTED PURE WHITE- BY MILLWORK
SURROUND: BLACK PEARL GRANITE
FIREPLACE: NAPOLEAN ASCENT 42

WATER SOFTENER
HYDROTECH 765 SERIES (OPTIONAL)



INTERIOR DOOR STYLE
(INCLUDED)



OPEN RAILING (OPTIONAL- PER PLAN)



CEILING FAN

OPTIONAL FOR COVERED PORCH
AND GREAT ROOM
(FAN DOES COME WITH A REMOTE)



FRONT LOAD WASHER AND ELECTRIC DRYER SET WITH VIBRATION REDUCTION TECHNOLOGY+ AND SENSOR DRY

- Capacity - Washer - 4.5 cu. ft. Dryer - 7.5 cu. ft.
- Smart Care
- Self Clean+
- White