

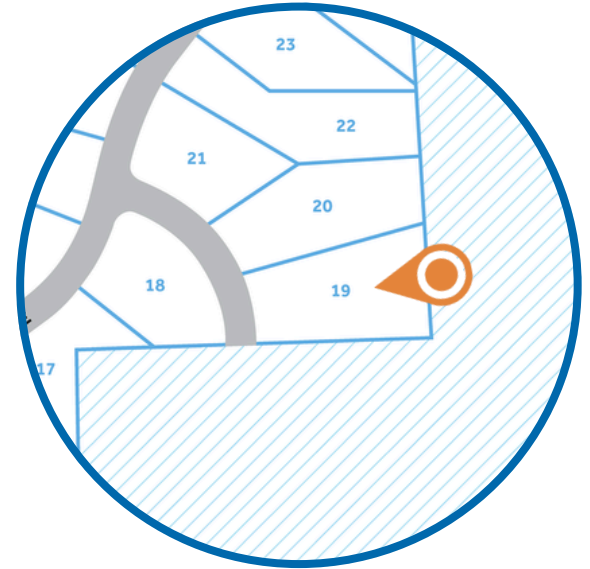
Kettle Creek

HOMESITE 19

35 Torrent Lane
Zebulon, NC

THE CHELSEA HOMEPLAN

ELEVATION FH
2,668 SQFT | 4 BR | 3 BA | 2 CAR GARAGE
W/ WORK AREA



1.0 ACRE

Kettle Creek offers spacious homesites ranging from 0.6 to over 2 acres, providing plenty of room to create your own private retreat. Located just outside Wake County in the growing Research Triangle Park region, the community blends peaceful living with convenience—only 25 minutes from downtown Raleigh and convenient access to RDU International Airport. Residents are also minutes from Five County Stadium, along with local dining, golf, disc golf, and small-town charm in nearby Zebulon, one of North Carolina's fastest-growing towns and highly rated schools.

NEW HOME SPECIALISTS

910.405.8311

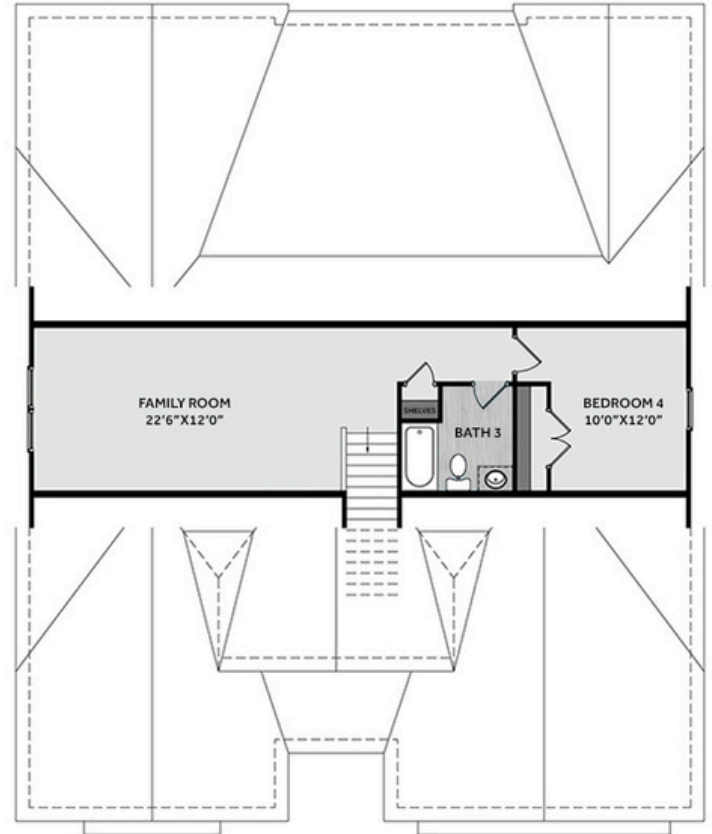
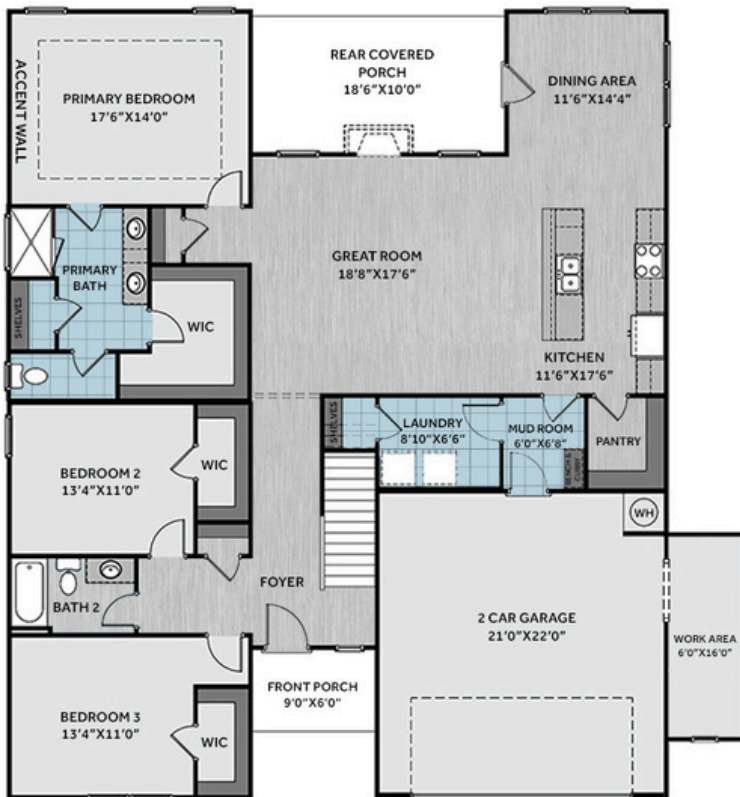
info@cavinessandcates.com



Photos, Options,
Virtual Tours & More

SALES AND MARKETING BY:





The open great room flows into the kitchen and is anchored by a gas log fireplace with a stained floating mantel. The kitchen boasts an island with a sink overlooking the great room, "Elegance" quartz countertops, white cabinetry, blue herringbone backsplash, pantry, and stainless-steel appliances. Just off the dining area, a spacious covered porch is perfect for indoor/outdoor living. A functional mudroom with built-in bench and cubbies painted in SW "Blustery Sky" leads to the laundry room. The first-floor primary suite showcases a tray ceiling with crown molding and a board and batten accent wall in SW "Blustery Sky", while the ensuite bath features a dual quartz vanity with center drawer stack, framed mirrors, walk-in tile shower, private water closet, linen closet, and a large walk-in closet. Two additional first-floor bedrooms, each with walk-in closets, share a full hall bathroom. Upstairs includes a fourth bedroom, full bathroom, and flexible family room. Nestled on a 1-acre lot, the exterior features low-maintenance vinyl siding, board and batten accents, a stone skirt, dimensional shingles, and an SW "Outerspace" front door with smart keypad entry. Additional highlights include a two-car garage with a work area, Energy Plus certification, and a 1-2-10 in-house builder warranty.

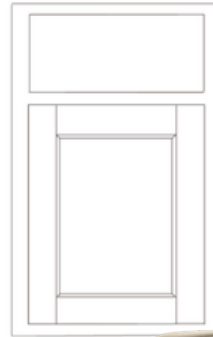
KITCHEN



Color:
White



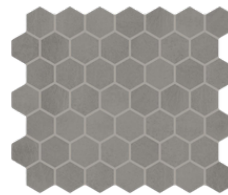
BATHROOM



Color:
White



FLOORING



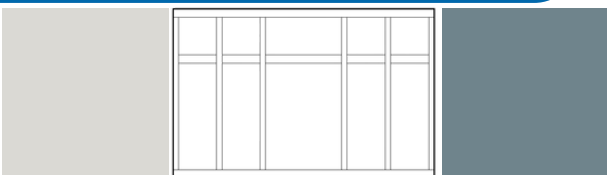
EXTERIOR



LIGHTING



PAINT



KITCHEN

- Align Matte Black Kitchen Faucet w/ Pull-Down Spray
- Standard SS 50/50 Double Bowl Sink
- Fairmont White Flat Panel Cabinets w/ Matte Black BP20576-900 Pulls
- 1/2 Bullnose Edge Elegance Quartz Countertops
- Artezen 2x4 Herringbone Mosaic / AT23 2x4 w/ #89 Smoke Gray Grout - Set in Herringbone Pattern Kitchen Backsplash
- Standard Kitchen Layout w/ 42" Wall Cabinets, Refrigerator End Panels, 2 ¼" Crown on Kitchen Cabinets
- Frigidaire Electric Stainless Steel Appliances (Dishwasher, Electric Range, and Over-the-Range Microwave)

BATHROOM

- Brantford 4" Spread Brushed Nickel Plumbing Package (Whole House)
- Niagara Quartz Countertops w/ Square Bowls
- Fairmont White Flat Panel Cabinets w/ Brushed Nickel BP20576195 Pulls
- Primary Bath Adult Height Cabinets and 12" Stack of Drawers to Primary Vanity
- Raised/Elongated Toilets in Primary Bath, Bath #2, and Bath #3
- Framed Mirrors in Primary Bath, Bath #2
- Primary Bath 36"x60" Deluxe Tile Shower - Wall: CT74 12x24 Staggered w/ #89 Smoke Gray Grout / Floor: CT74 2x2 Straight w/ #89 Smoke Gray Grout
- SQ20 w/ #89 Smoke Gray Grout on Bath #2 and Bath #3 Shower Surround

FLOORING

- Revered - Aldergrove Oak #2029 LVP in Foyer, Great Room, Kitchen/Dining Area, Bath #2, Bath #3
- MC52 1.5" Hex Mosaic w/ #60 Dusty Gray Grout in Mud Room, Laundry
- CT74 12x24 Staggered w/ #89 Smoke Gray Grout Ceramic Tiles in Primary Bath
- Graceful Finesse Concrete Carpeting

INTERIOR PAINT & TRIM

- Sherwin Williams Duration Flat Primary Interior Color: First Star SW7646
- Level 1 Open Rails on 1st Floor
- Tray Ceiling in Primary Suite
- Accent Wall Option #3 - Board & Batten Panel Accent Wall: Satin Painted Blustery Sky SW9140 - Primary Bedroom
- Bench & Cubby (Drop Zone) 3' Wide - Mud Room: Semi-Gloss Painted Blustery Sky SW9140

LIGHTING / ELECTRICAL

- Canfield Lighting Package Brushed Nickel (Whole House)
- 2 Arilda One Light Pendants over Kitchen Island
 - Model: 6537001-112
- 4 LED Recess Lights in Kitchen
- 2 Bulb Floodlights on Rear Corners

FIREPLACE

- Gas Fireplace w/ Ozark Floating Mantel Stained in Loft Pine

EXTERIOR

- 6-Panel Front Door, 1 ½ Light Sidelights & Transom Package w/ Smart Keypad Deadbolt and Brushed Nickel Handleset
- Front Door Painted: Outerspace SW6251
- Moire Black Dimensional Shingles
- Norris Gray - Stack Stone Accent
- Everest Vinyl Body Siding
- Everest Board & Batten Accent
- White Exterior Trim
- 2 over 2 White Windows
- Bridgeport Steel Extended Panel Garage Door w/ Spear Style Decorative Hardware and Glass Inserts
- White Gutters

DESIGN OPTIONS SUMMARY

STRUCTURAL	BASE PRICE: \$493,700
Optional Elevation FH w/ Stone	\$3,725
Optional Garage Storage/Work Area	\$6,820
Optional Gas Fireplace on Exterior Wall	\$1,650

DESIGN CENTER OPTIONS \$45,727

Align Kitchen Faucet w/ Pull-Down Spray
 Brantford 4" Spread Brushed Nickel Plumbing Package (Whole House)
 Raised/Elongated Toilet (x2- Bath #2, Bath #3)
 6-Panel Front Door, 1 ½ Light Sidelights & Transom Package
 Kitchen Pendant Light: Arilda One Light Pendant - 6537001-112 (x2- Over Kitchen Island)
 Add Recess Light Assembly to Non Standard Location (x4- Kitchen)
 Add Two - 2 Bulb Floodlights on Single Switch Circuit (Rear Corners)
 Add Smart Keypad Deadbolt Front Door
 Add Spear Style Decorative Hardware to Garage Door
 Add Decorative Glass & Inserts to 16x7 Door
 Add Bench and Cubby (Drop Zone) 3' WIDE - Mud Room
 Level 1 Rails 1st Floor
 Add Accent Wall Option #3 - Painted Board & Batten Panel Accent Wall - Primary Bedroom
 Kitchen - Add 42" Wall Cabinets
 Add Refrigerator End Panels to Standard Cabinet Layout
 Add 2 ¼" Crown to Standard Cabinet Layout
 Primary Bath - Adult Height Vanity
 Add 12" Stack of Drawers to Primary Bath Vanity
 Kitchen Level 1 Quartz
 Upgrade all Vanity Bowls to Square Bowls
 Ozark Floating Mantel
 Sherwin Williams Duration Flat Paint Whole House Package
 Paint Bench & Cubby Custom Semi-Gloss Color
 LVP Level 2 - Foyer, Great Room, Kitchen/Dining Area, Bath #2, Bath #3
 Ceramic Tile Lvl 6 ILO Vinyl - Laundry, Mud Room
 Ceramic Tile Level 3- Primary Bath Opt. Layout
 Kitchen Backsplash: Arzezen 2x4 Herringbone Mosaic
 Level 3 Deluxe Tile Pattern - Option #1 Tile Shower 36"x 60"
 Canfield Lighting Package Brushed Nickel (Whole House)
 Upgrade to Front Door Handleset
 Add Framed Mirrors to Primary Bathroom, Bath #2
 Stainless Steel Electric Range, Microwave and Dishwasher
 Stainless Steel Standard Depth French Door Refrigerator
 2"White Faux Wood Blinds

TOTAL OPTIONS ADDED **\$57,922**

TOTAL SALES PRICE: \$551,622

Disclaimer: In an effort to continuously improve and develop our products, Caviness & Cates reserves the right to change products, features, pricing, and specifications without prior notice. Features may vary between homes built within the same community. Please see actual home purchase & sale agreement for additional information, disclosures, and disclaimers. Plans are artistic renderings and may not reflect final product. All information on square footage, acreage, and dimensions should be considered approximate. Consult with New Homes Sales Specialist before writing an offer.