

LONG POINT

RESERVE

HOMESITE 7
230 Elijah Way
Vass, NC

THE LOOKOUT HOMEPLAN

\$299,900

1,658 SQFT | 3 BR | 2.5 BA | 1 CAR GARAGE



Welcome to Long Point Reserve, a thoughtfully designed community just off US-1 in the peaceful town of Vass. Offering a selection of townhomes and single-family homes starting from the \$300s, this neighborhood blends countryside tranquility with modern convenience. Residents will enjoy a range of amenities, including a swimming pool and pool house, a scenic walking trail through the pines, and a proposed dog park for four-legged companions. Ideally located, Long Point Reserve is only 15 minutes from Southern Pines, 35 minutes from Fort Bragg via NC-690, and under an hour from Raleigh. Here, residents can experience the charm of rural living with easy access to shopping, dining, and recreation. With its welcoming community, natural beauty, and thoughtful design, Long Point Reserve offers the perfect balance of comfort, connection, and Carolina charm.

NEW HOME SPECIALISTS

910.405.8311

info@cavinessandcates.com

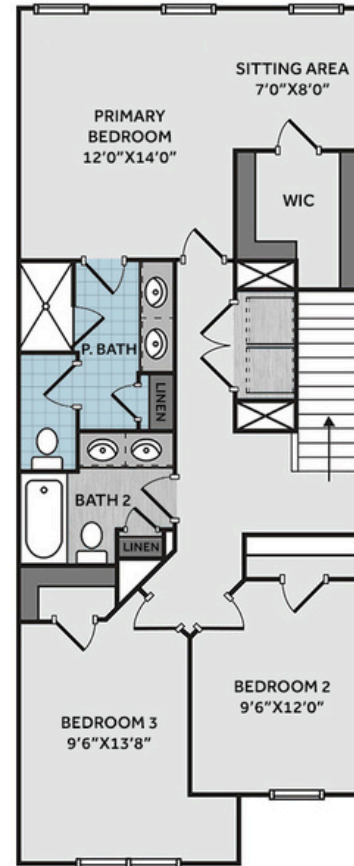
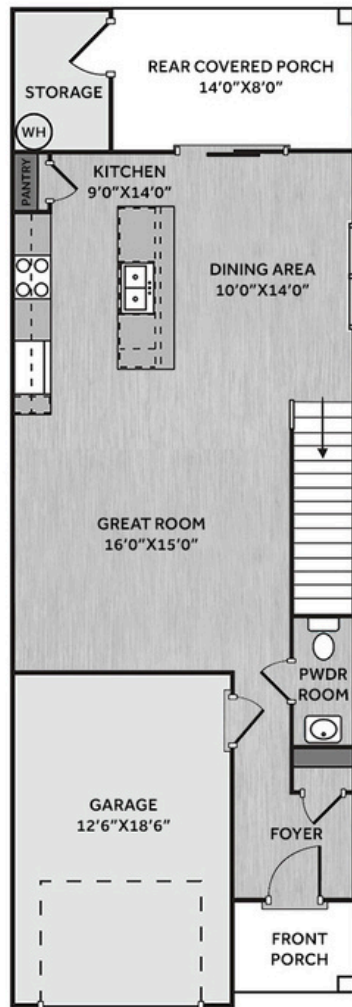


Photos, Options,
Virtual Tours & More

SALES AND MARKETING BY:



Builder's Marketing Group
WWW.CAVINESSANDCATES.COM



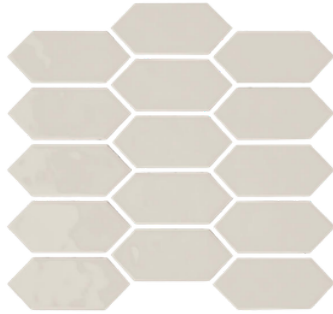
Step into this thoughtfully designed end-unit townhome through a welcoming foyer featuring a coat closet and a convenient powder room. The kitchen overlooks the dining area and great room and includes a large island with seating, white shaker cabinets, "Giallo Ornamentale" granite countertops, tile backsplash, a pantry, and stainless-steel appliances—including a smooth top range, microwave, and dishwasher. From the dining area, step onto the covered rear porch with an exterior storage closet. Durable LVP flooring enhances the first floor. Upstairs, the primary suite offers a peaceful retreat with a sitting area, two-piece crown molding, walk-in closet, and an en-suite bathroom featuring a dual sink vanity with a "Simply White" quartz countertop, a walk-in tile shower, private water closet, and linen closet. Two additional bedrooms share a full hall bathroom with a dual sink vanity, a tub/shower combo, and a linen closet. A centrally located laundry closet sits at the top of the stairs for added convenience. Exterior features include low-maintenance vinyl siding with board and batten accents, dimensional roof shingles, and a front door painted in SW "Urbane Bronze". Energy Plus certified and backed by a 1-2-10 year builder in-house warranty, this townhome also includes a 1-car garage with direct foyer access.

KITCHEN

Door Style:
Fairmont



Color:
White



BATHROOM

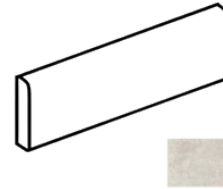
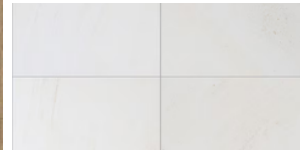
Door Style:
Fairmont



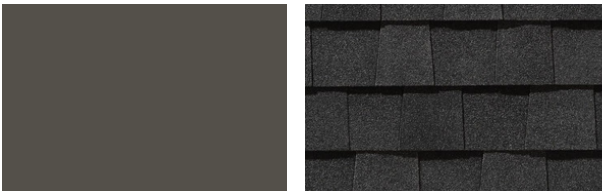
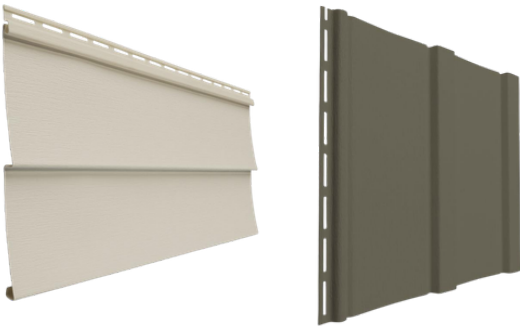
Color:
White



FLOORING



EXTERIOR



PAINT



LIGHTING



KITCHEN

- Brushed Nickel Brantford Kitchen Sink Fixture
- Standard SS 50/50 Double Bowl Sink
- Fairmont White Flat Panel Cabinets w/ Brushed Nickel BP20576195 Pulls
- 1/2 Bullnose Giallo Ornamental Granite Countertops
- 2x5 Horizontal Pickets - Mythology / MY91 Pickets w/ #93 Fossil Grout Kitchen Backsplash
- Standard Kitchen Layout w/ 36" Wall Cabinets
- Frigidaire Electric Stainless Steel Appliances (Dishwasher, Electric Range, and Over-the-Range Microwave)

BATHROOM

- Brantford 4" Spread Brushed Nickel Plumbing Package (Whole House)
- Simply White Quartz Countertops w/ Square Bowls
- Fairmont White Flat Panel Cabinets w/ Brushed Nickel BP20576195 Pulls
- Adult Height Cabinets in Primary Bath and Bath #2
- Raised/Elongated Toilets in Primary Bath, Powder Room, Bath #2
- Primary Bath 36"x60" Tile Shower - Wall: CG05 12x24 Staggered w/ #90 Light Pewter Grout / Floor: LP19 2x2 w/ #90 Light Pewter Grout
- ARO4 w/ #93 Fossil Grout on Bath #2 Shower Surround

FLOORING

- Optimum Plus - Wild Dunes #7089 LVP in Foyer, Great Room, Kitchen / Dining Area, Powder Room, Bath #2, Laundry
- CG05 12x24 Staggered w/ #90 Light Pewter Grout Ceramic Tiles in Primary Bath
- Graceful Finesse Ecru Carpeting

INTERIOR PAINT & TRIM

- Sherwin Williams Primary Interior Color: City Loft SW7631 w/ White Ceilings
- Open Rails on 1st Floor
- Two Piece Crown Molding in Primary Suite

LIGHTING / ELECTRICAL

- Canfield Lighting Package Brushed Nickel (Whole House)
- 2 Dianna Three Light Mini Lantern Pendants over Kitchen Island
 - Model: 5192603-962
- LED Recess Lights in Kitchen
- LED Recess Lights in Dining Area

EXTERIOR

- 12 - Light Glass View Over 1 - Panel Front Door w/ Smart Keypad Deadbolt, and Brushed Nickel Handleset
- Front Door Painted: Urbane Bronze SW7048
- Black Architectural Shingles
- Square Panel Front Columns
- Desert Sand Vinyl Body Siding
- Misty Shadow Board & Batten Accent
- White Exterior Trim
- 4 over 1 White Windows
- White Gallery Steel Long Panel Garage Door w/ Hardware
- White Gutters