

# LONG POINT

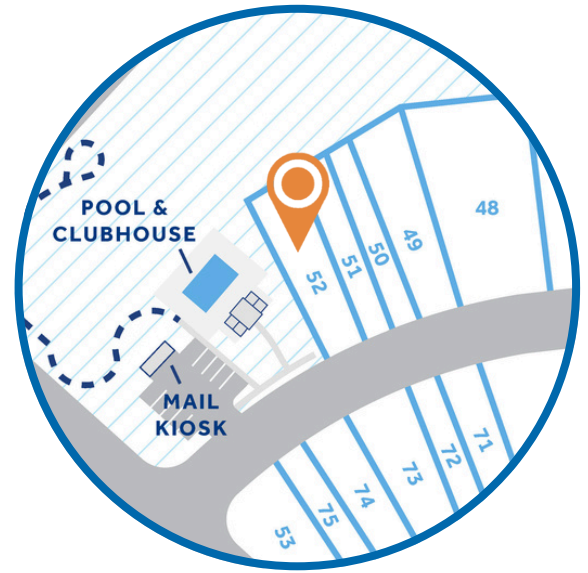
RESERVE

**HOMESITE 52**  
111 Michter Street  
Vass, NC

## THE HARBOR HOMEPLAN

**\$329,900**

1,984 SQFT | 3 BR | 2.5 BA | 1 CAR GARAGE



Welcome to Long Point Reserve, a thoughtfully designed community just off US-1 in the peaceful town of Vass. Offering a selection of townhomes and single-family homes starting from the \$300s, this neighborhood blends countryside tranquility with modern convenience. Residents will enjoy a range of amenities, including a swimming pool and pool house, a scenic walking trail through the pines, and a proposed dog park for four-legged companions. Ideally located, Long Point Reserve is only 15 minutes from Southern Pines, 35 minutes from Fort Bragg via NC-690, and under an hour from Raleigh. Here, residents can experience the charm of rural living with easy access to shopping, dining, and recreation. With its welcoming community, natural beauty, and thoughtful design, Long Point Reserve offers the perfect balance of comfort, connection, and Carolina charm.

**NEW HOME SPECIALISTS**

910.405.8311

info@cavinessandcates.com

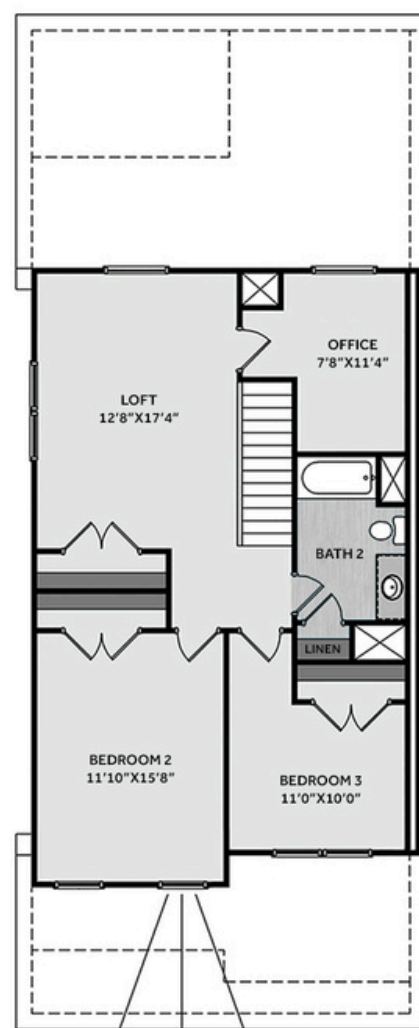
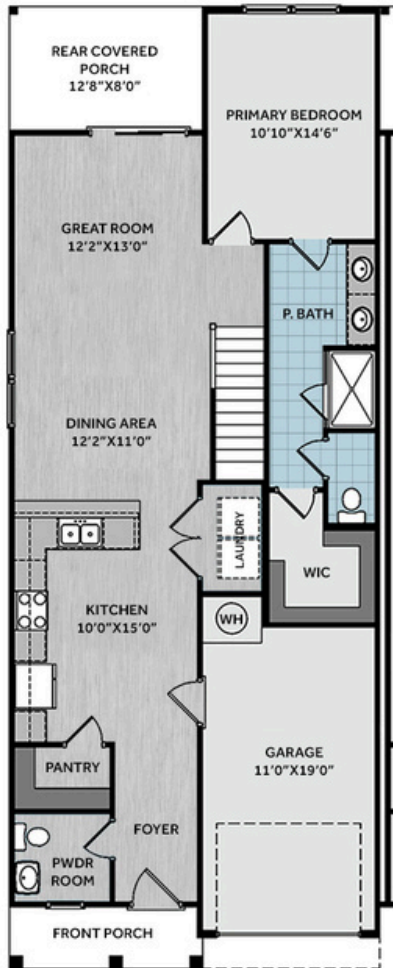


Photos, Options,  
Virtual Tours & More

SALES AND MARKETING BY:



Builder's Marketing Group  
WWW.CAVINESSANDCATES.COM



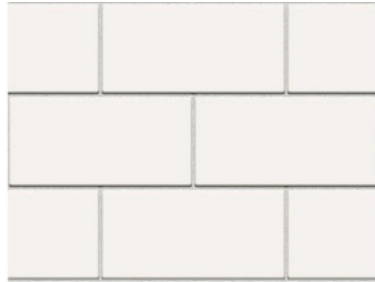
This stylish left-end-unit townhome offers low-maintenance living in a thoughtfully designed layout. The welcoming foyer features a convenient powder room and opens seamlessly to the kitchen, dining, and great room. The kitchen boasts a large peninsula with bar seating, "New Willow White" quartz countertops, white shaker cabinets, white subway tile backsplash, stainless steel appliances—including a microwave, smooth-top range, and dishwasher—ample cabinet space, and a walk-in pantry. A laundry closet with washer/dryer hookups is conveniently located off the kitchen. The open dining and great room open to a covered rear porch, perfect for relaxing or entertaining. The first-floor primary suite is filled with natural light and features two-piece crown molding, along with an en-suite bathroom that includes a dual vanity with quartz countertops, a walk-in tile shower, private water closet, and a spacious walk-in closet. Upstairs features a loft with a closet and access to a home office, two additional bedrooms, and a full bath with a linen closet. Additional highlights include a 1-car garage with direct kitchen access, low-maintenance vinyl with board and batten accents, dimensional roof shingles, and a front door in SW "Festoon Aqua." Energy Plus certified and backed by a 1-2-10 builder warranty.

## KITCHEN

Door Style:  
Fairmont



Color:  
White

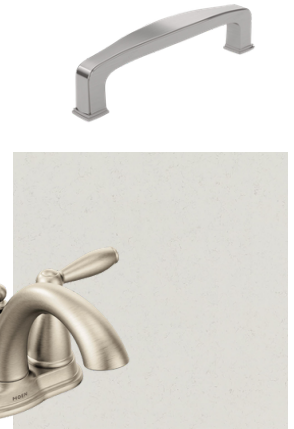


## BATHROOM

Door Style:  
Fairmont



Color:  
White



## FLOORING

## EXTERIOR



## LIGHTING

## PAINT



## KITCHEN

- Brushed Nickel Brantford Kitchen Sink Fixture
- Standard SS 50/50 Double Bowl Sink
- Fairmont White Flat Panel Cabinets w/ Brushed Nickel 6501195 Pulls
- 1/2 Bullnose New Willow White Quartz Countertops
- 3x6 Subway Tile - Color Wheel Classic / 3x6 #0190 Arctic White Glossy w/ #44 Bright White Grout - Set in Brick Pattern Kitchen Backsplash
- Standard Kitchen Layout w/ 36" Wall Cabinets
- Frigidaire Electric Stainless Steel Appliances (Dishwasher, Electric Range, and Over-the-Range Microwave)

## BATHROOM

- Brantford 4" Spread Brushed Nickel Plumbing Package (Whole House)
- Niagara Quartz Countertops w/ Square Bowls
- Fairmont White Flat Panel Cabinets w/ Brushed Nickel BP81092195 Pulls
- Adult Height Cabinets in Primary Bath and Bath #2
- Raised/Elongated Toilets in Primary Bath, Powder Room, Bath #2
- Primary Bath 36"x60" Tile Shower - Wall: CG07 12x24 Staggered w/ #78 Sterling Silver Grout / Floor: LP21 2x2 w/ #78 Sterling Silver Grout
- ARO4 w/ #93 Fossil Grout on Bath #2 Shower Surround

## FLOORING

- Optimum Plus - Driftwood #1056 LVP in Foyer, Great Room, Kitchen / Dining Area, Powder Room, Bath #2, Laundry
- CG07 12x24 Staggered w/ #78 Sterling Silver Grout Ceramic Tiles in Primary Bath
- Graceful Finesse Concrete Carpeting

## INTERIOR PAINT & TRIM

- Sherwin Williams Primary Interior Color: First Star SW7646 w/ White Ceilings
- Open Rails on 1st Floor
- Two Piece Crown Molding in Primary Suite

## LIGHTING / ELECTRICAL

- Canfield Lighting Package Brushed Nickel (Whole House)
- LED Recess Lights in Kitchen
- LED Recess Lights in Dining Area

## EXTERIOR

- 12 - Light Glass View Over 1 - Panel Front Door w/ Smart Keypad Deadbolt, and Brushed Nickel Handleset
- Front Door Painted: Festoon Aqua SW0019
- Black Architectural Shingles
- Square Panel Front Columns
- White Vinyl Body Siding
- English Wedgewood Board & Batten Accent
- White Exterior Trim
- 4 over 1 White Windows
- White Gallery Steel Long Panel Garage Door w/ Hardware
- White Gutters