



# Emily Gardens

**HOMESITE 11**  
119 Crossvine Street  
Selma, NC

## THE DRAYTON HOMEPLAN

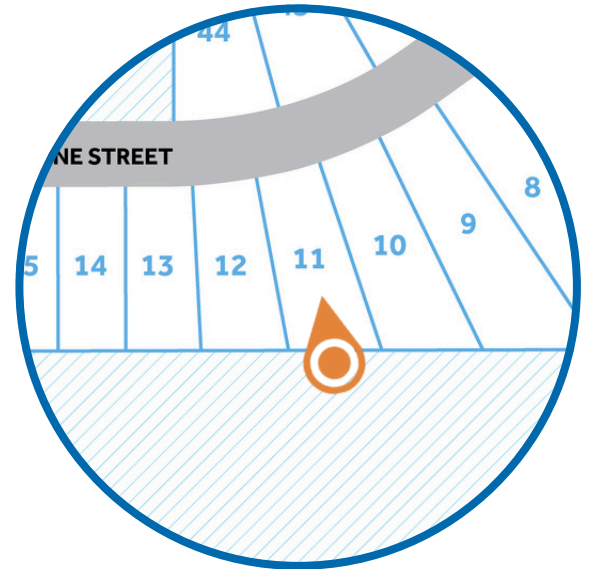
ELEVATION F

2,325 SQFT | 4 BR | 2.5 BA | 2 CAR GARAGE

**\$349,900**



\*Artistic Rendering not lot specific.  
For representation purposes only.



**.18 ACRE**

Emily Gardens is more than a neighborhood—it's a welcoming community where small-town hospitality shines. The area buzzes with local events and festivals that bring everyone together, including the Ham & Yam Festival in Smithfield, Selma's Railroad Days, Clayton Harvest Festival, and Benson Mule Days—full of food, music, parades, and family fun throughout the year.

Nearby attractions add to the charm: explore historic Downtown Selma with its antique shops, murals, Union Station, and live shows at the Rudy Theatre; visit the Ava Gardner Museum; enjoy wine tastings at Hinnant Family Vineyards; or shop at Carolina Premium Outlets.

Families benefit from the strong Johnston County Public Schools district, known for its innovation and support for students.

### NEW HOME SPECIALISTS

910.405.8311

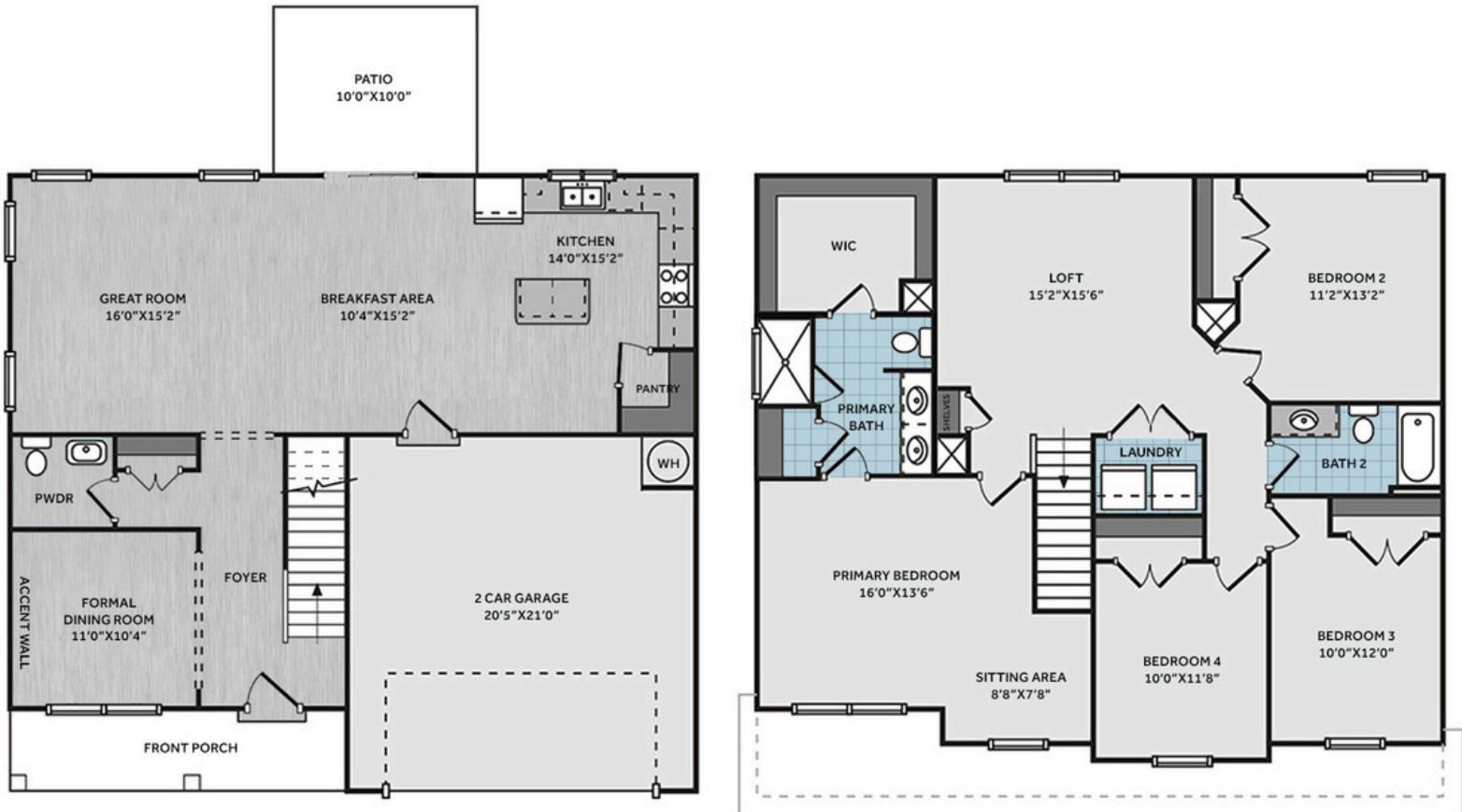
info@cavinessandcates.com



Photos, Options,  
Virtual Tours & More



\*Subject to change without notice. See pg. 4 for full disclaimer.



Just off the foyer, the dining room showcases a square panel accent wall painted in SW "Gale Force," along with a coat closet and a convenient half bath. The open great room flows seamlessly into the kitchen, complete with a large island, "Azul Platino" granite countertops, white shaker cabinets, a corner pantry, and stainless-steel appliances including a microwave, dishwasher, and smooth-top range. The breakfast area leads to the grill patio. Upstairs, an open loft area provides additional living space, with a nearby linen closet and laundry room. The second-floor primary suite features a cozy sitting area and a bathroom containing a dual quartz sink vanity, walk-in shower, linen closet, and spacious walk-in closet. Three additional bedrooms and a full hall bathroom complete the second floor. Exterior highlights include low-maintenance vinyl siding with board and batten accents, dimensional roof shingles, a spacious front porch, and a SW "Cyberspace" front door with smart keypad entry to the home. This home includes a 2-car garage, fiber optic internet availability, Energy Plus certification, and a 1-2-10 builder in-house warranty.

**KITCHEN**



**BATHROOM**



**FLOORING**

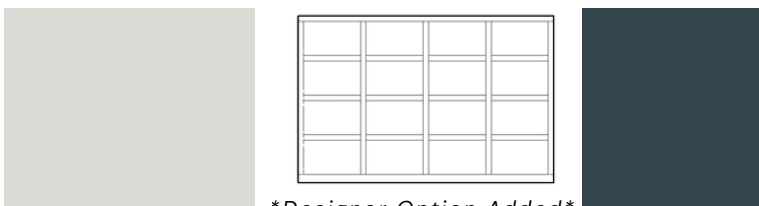
**EXTERIOR**



**LIGHTING**



**PAINT**



\*Designer Option Added\*

**APPLIANCES**



## KITCHEN

- Moen Method One-Handle Pullout Kitchen Faucet in a Spot Resist™ Stainless Finish
- Standard Stainless Steel 50/50 Double Bowl Sink
- NexGen Shaker White Flat Panel Cabinets w/ BP20576195 Brushed Nickel Pulls
- Soft Close Hinges on Cabinet Doors
- ½ Bullnose Edge 3CM Azul Platino Granite Countertop w/ 4" Splash
- Frigidaire Electric Stainless Steel Appliances
  - 30" Electric Range with EvenTemp™ - FCRE3062AS
  - 1.8 Cu. Ft. Over-The-Range Microwave - FMOS1846BS
  - 24" Built-In Tall Tub Dishwasher - FDPC4314AS

## BATHROOM

- Moen Chateau Chrome Plumbing Package (Whole House)
- Frost White Quartz Countertops w/ Square Bowls
- NexGen Shaker White Flat Panel Cabinets w/ BP20576195 Brushed Nickel Pulls
- Soft Close Hinges on Cabinet Doors
- Adult Height Cabinets in Primary Bath & Bath #2
- Raised/Elongated ADA Gerber Banner Toilet in Primary Bath & Gerber Banner Elongated Bowl Toilet in Powder Room, Bath #2
- Small Petite Pedestal Sink in Powder Room

## FLOORING

- Shaw Optimum Plus - Driftwood #1056 LVP in Foyer, Great Room, Formal Dining Room, Kitchen / Breakfast Area, Powder Room
- Shaw Streamline - Carrara White #1182 Vinyl in Primary Bath, Bath #2, Laundry
- Shaw Graceful Finesse Concrete Carpeting in Primary Bedroom/WIC, Bedroom #2, Bedroom #3, Bedroom #4, Loft, Stairs

## INTERIOR PAINT & TRIM

- Sherwin Williams Flat Primary Interior Color: First Star SW7646 w/ White Ceilings
- Embark Trim Package w/ 3 ¼" Baseboard and 2 ¼" Casings on all Doors & Windows
- Accent Wall Option #1 - Square Panel Accent Wall: Satin Painted Gale Force SW7605 - Formal Dining Room

## LIGHTING

- Embark Generation Lighting Package Brushed Nickel
- Kitchen Lighting w/ Traverse Mirage Fixtures
- Great Room & Primary Bedroom include a Brushed Nickel Designer Ceiling Fan w/ Light Kit
  - Linden 52" Traditional Ceiling Fan - 5LD52BSD

## EXTERIOR

- Painted Craftsman 3-Light Glass View over 3-Panel Front Door w/ Smart Keypad Deadbolt
- Front Door Painted: Cyberspace SW7076
- Moire Black Dimensional Shingles
- Everest Vinyl Body Siding
- Brunswick Board & Batten Accent
- White Exterior Trim
- 4 over 1 White Windows
- White Bridgeport Steel Narrow Panel Garage Door
- White Gutters on Front of Home

Disclaimer: In an effort to continuously improve and develop our products, Caviness & Cates reserves the right to change products, features, pricing, and specifications without prior notice. Features may vary between homes built within the same community. Please see actual home purchase & sale agreement for additional information, disclosures, and disclaimers. Plans are artistic renderings and may not reflect final product. All information on square footage, acreage, and dimensions should be considered approximate. Consult with New Homes Sales Specialist before writing an offer.