



Emily Gardens

HOMESITE 12
127 Crossvine Street
Selma, NC

THE AVERY HOMEPLAN

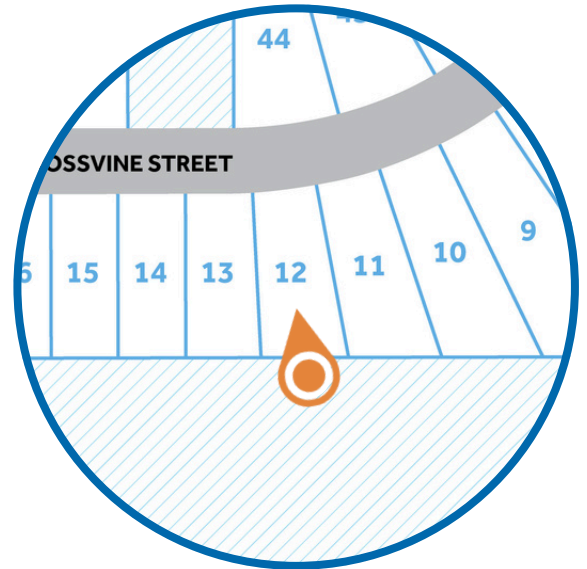
ELEVATION A

1,866 SQFT | 4 BR | 2 BA | 2 CAR GARAGE

\$332,500



*Artistic Rendering not lot specific.
For representation purposes only.



.16 ACRE

Emily Gardens is more than a neighborhood—it's a welcoming community where small-town hospitality shines. The area buzzes with local events and festivals that bring everyone together, including the Ham & Yam Festival in Smithfield, Selma's Railroad Days, Clayton Harvest Festival, and Benson Mule Days—full of food, music, parades, and family fun throughout the year.

Nearby attractions add to the charm: explore historic Downtown Selma with its antique shops, murals, Union Station, and live shows at the Rudy Theatre; visit the Ava Gardner Museum; enjoy wine tastings at Hinnant Family Vineyards; or shop at Carolina Premium Outlets.

Families benefit from the strong Johnston County Public Schools district, known for its innovation and support for students.

NEW HOME SPECIALISTS

910.405.8311

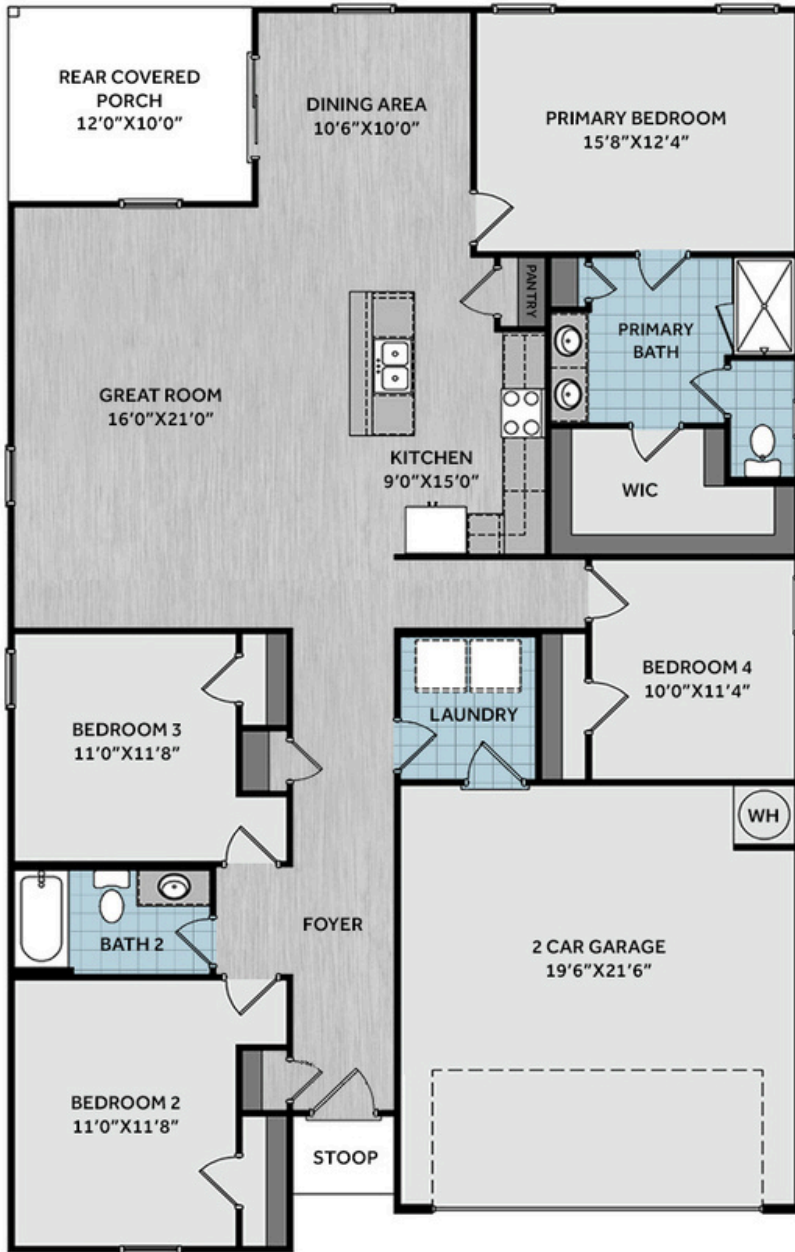
info@cavinessandcates.com



Photos, Options,
Virtual Tours & More



*Subject to change without notice. See pg. 4 for full disclaimer.



The welcoming foyer opens to two bedrooms and a full hall bath with a vanity and tub/shower combo, ideal for family or guests. A convenient mudroom, with washer/dryer connections, offers direct access to the garage for everyday ease. A spacious great room flows into the kitchen, complete with a center island, "Delphi" quartz countertops, horizontal picket backsplash, white shaker cabinets, pantry, and stainless-steel appliances, and connects seamlessly to the dining area. The dining area opens to the rear-covered porch, perfect for relaxing or entertaining. Just off the kitchen, the private primary suite provides a peaceful retreat with an ensuite bathroom containing a dual quartz sink vanity, walk-in shower, private water closet, linen closet, and a large walk-in closet. Exterior details include low-maintenance vinyl siding, dimensional roof shingles, and a front door painted in SW "Sea Serpent" with smart keypad entry. Additional highlights include a two-car garage, fiber optic internet availability, Energy Plus Certification, and a 1-2-10-year builder in-house warranty.

KITCHEN

Designer Option Added



BATHROOM



FLOORING



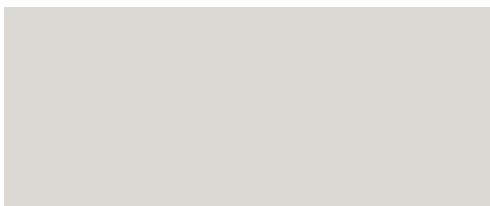
EXTERIOR



LIGHTING



PAINT



APPLIANCES



KITCHEN

- Moen Method One-Handle Pullout Kitchen Faucet in a Spot Resist™ Stainless Finish
- Standard Stainless Steel 50/50 Double Bowl Sink
- NexGen Shaker White Flat Panel Cabinets w/ BP20576195 Brushed Nickel Pulls
- Soft Close Hinges on Cabinet Doors
- Flat Polish Edge 2CM Delphi Quartz Countertop
- 2x5 Horizontal Pickets - Mythology / MY96
2x5 Horizontal Pickets w/ #42 Platinum Grout Kitchen Backsplash
- Frigidaire Electric Stainless Steel Appliances
 - 30" Electric Range with EvenTemp™ - FCRE3062AS
 - 1.8 Cu. Ft. Over-The-Range Microwave - FMOS1846BS
 - 24" Built-In Tall Tub Dishwasher - FDPC4314AS

BATHROOM

- Moen Chateau Chrome Plumbing Package (Whole House)
- Arctic White Quartz Countertops w/ Square Bowls
- NexGen Shaker White Flat Panel Cabinets w/ BP20576195 Brushed Nickel Pulls
- Soft Close Hinges on Cabinet Doors
- Adult Height Cabinets in Primary Bath & Bath #2
- Raised/Elongated ADA Gerber Banner Toilet in Primary Bath & Gerber Banner Elongated Bowl Toilet in Bath #2

FLOORING

- Shaw Optimum Plus - Oyster Oak #591 LVP in Foyer, Great Room, Kitchen / Dining Area
- Shaw Streamline - Carrara White #1182 Vinyl in Primary Bath, Bath #2, Laundry
- Shaw Graceful Finesse Concrete Carpeting in Primary Bedroom/WIC, Bedroom #2, Bedroom #3, Bedroom #4

INTERIOR PAINT & TRIM

- Sherwin Williams Flat Primary Interior Color: First Star SW7646 w/ White Ceilings
- Embark Trim Package w/ 3 ¼" Baseboard and 2 ¼" Casings on all Doors & Windows

LIGHTING

- Embark Generation Lighting Package Brushed Nickel
- Kitchen Lighting w/ Traverse Mirage Fixtures
- Great Room & Primary Bedroom include a Brushed Nickel Designer Ceiling Fan w/ Light Kit
 - Linden 52" Traditional Ceiling Fan - 5LD52BSD

EXTERIOR

- Painted Craftsman 3-Light Glass View over 3-Panel Front Door w/ Smart Keypad Deadbolt
- Front Door Painted: Sea Serpent SW7615
- Moire Black Dimensional Shingles
- White Vinyl Body Siding
- White Exterior Trim
- Midnight Blue Raised Panel Shutters
- 6 over 6 White Windows
- White Gallery Steel Short Panel Garage Door
- Black Gutters on Front of Home