

Brookstone Village

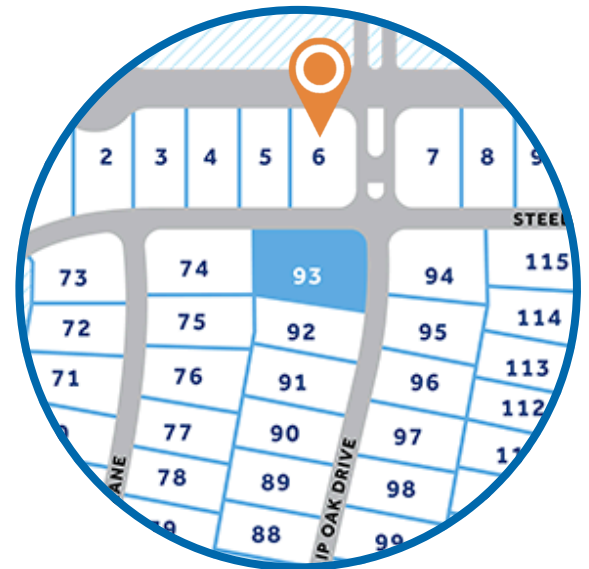
HOMESITE 6

320 Steelwood Street
Raeford, NC

THE CLAYTON HOMEPLAN

ELEVATION F

2,560 SQFT | 4 BR | 3.5 BA | 2 CAR GARAGE



.20 ACRE

Find your place to call home in Brookstone Village! This gated community is in a prime location just off HWY 401 in the Raeford area, minutes from every resource and activity! Just around the corner, you will find First Health Moore Regional Hospital and First Health Convenient Care. Find fitness opportunities at Fit4Life Health Club and CrossFit Raeford. Try indoor Skydiving at Paraclete XP, let the kids jump and explore at JP's Jump Masters indoor trampoline park, or get the family together at the local Round-A-Bout Skating Center! You are also just down the road from multiple grocery stores, shopping centers, and restaurants.

NEW HOME SPECIALISTS

910.405.8311

info@cavinessandcates.com



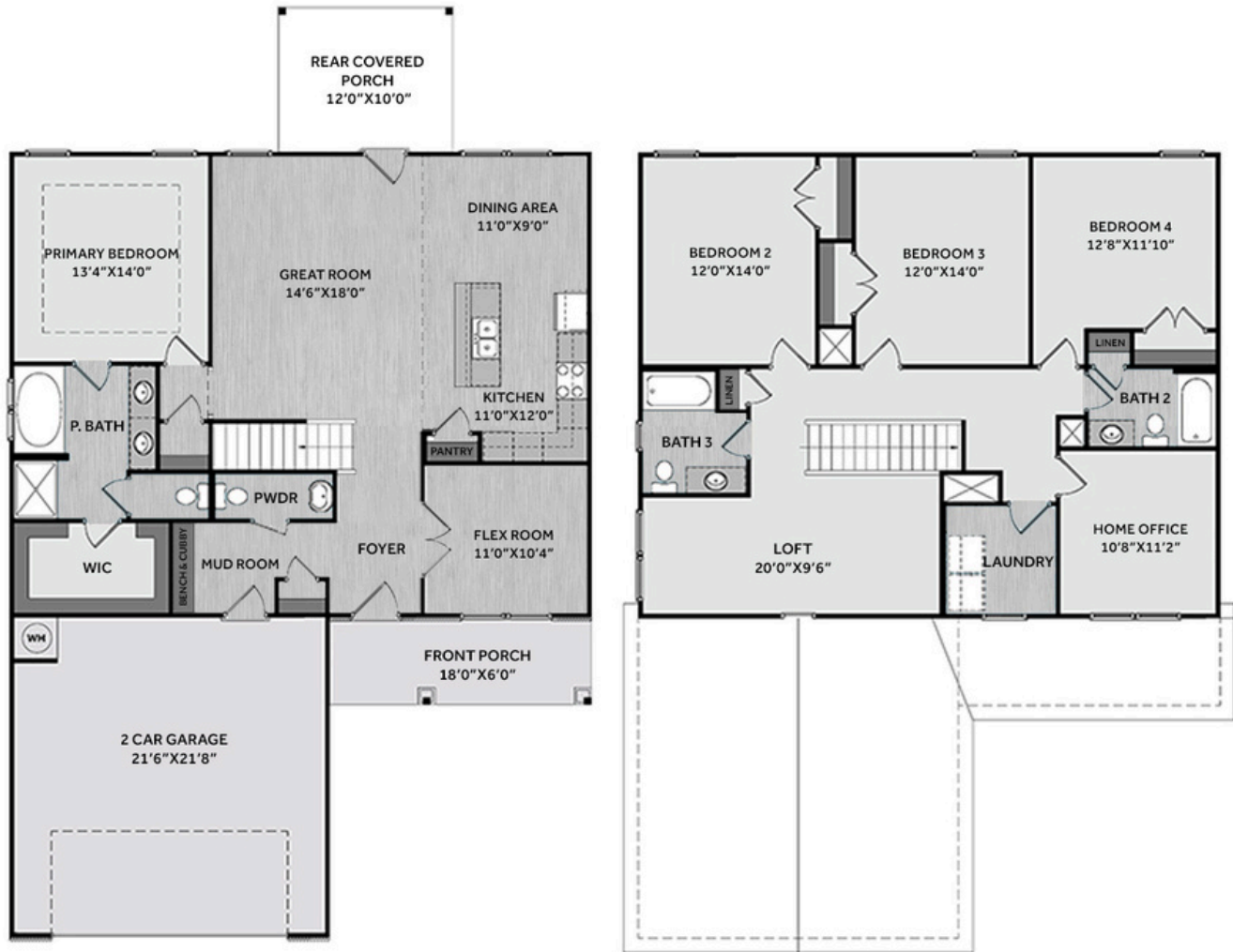
Photos, Options,
Virtual Tours & More



WWW.CATESBUILDING.COM



WWW.CAVINESSANDCATES.COM



The first-floor primary suite features a tray ceiling with crown molding and an adjoining bathroom that offers a dual quartz sink vanity, walk-in shower, garden tub, private water closet, and a walk-in closet. The spacious great room opens to the rear covered porch, creating effortless indoor-outdoor living. Off the foyer, a flex room with French doors provides a versatile space. The mudroom at the garage entry includes a built-in bench and cubbies painted in SW "Gale Force", a coat closet, and half bath access. The kitchen opens to the great room and dining area and features an island with a sink, "New Willow White" quartz countertops, a pantry, and stainless-steel appliances. Upstairs offers a loft with linen storage, a home office, three bedrooms, two full bathrooms, and a laundry room with washer/dryer connections. Exterior features include a spacious front porch, low-maintenance vinyl siding, board and batten accents, and dimensional roof shingles. Additional highlights include a two-car garage, Energy Plus certification, and a 1-2-10 builder in-house warranty.

KITCHEN

Door Style:
Fairmont

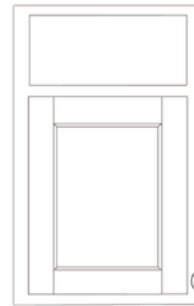


Color:
White

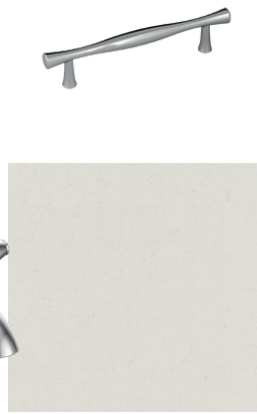


BATHROOM

Door Style:
Fairmont



Color:
White



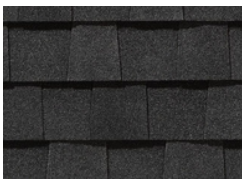
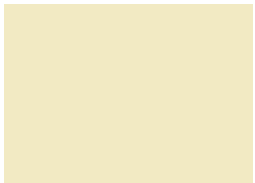
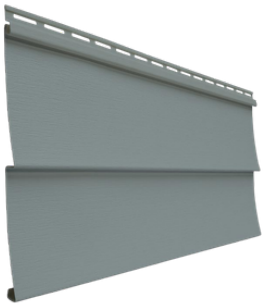
APPLIANCES



FLOORING



EXTERIOR

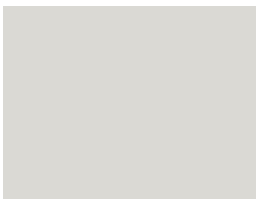


LIGHTING



PAINT

Bench & Cubby Painted



KITCHEN

- Brushed Nickel Brantford Kitchen Sink Fixture
- Standard Stainless Steel 50/50 Double Bowl Sink
- Fairmont White Flat Panel Cabinets w/ Brushed Nickel 6501195 Pulls
- 1/2 Bullnose Edge New Willow White Quartz Countertops w/ 4" Splash
- Standard Kitchen Layout
- Frigidaire Electric Stainless Steel Appliances
 - 30" Electric Range with EvenTemp™ - FCRE3062AS
 - 1.8 Cu. Ft. Over-The-Range Microwave - FMOS1846BS
 - 24" Built-In Tall Tub Dishwasher - FDPC4314AS

BATHROOM

- Brantford Chrome Plumbing Package (Whole House)
- Niagara Quartz Countertops w/ Oval Bowls
- Fairmont White Flat Panel Cabinets w/ Chrome BP9161196180 Pulls
- Raised/Elongated ADA Gerber Banner Toilet in Primary Bath & Gerber Banner Elongated Bowl Toilet in Powder Room, Bath #2, Bath #3
- Gerber Maxwell Pedestal Sink in Powder Room
- Garden Tub and Fiberglass Shower Layout
- SQ20 w/ #89 Smoke Gray Grout Ceramic Tile Primary Shower Surround & SQ20 12x12 w/ #89 Smoke Gray Grout Ceramic Tile Garden Tub Surround
- SQ20 w/ #89 Smoke Gray Grout Ceramic Tile Surround in Bath #2, Bath #3

FLOORING

- Shaw Optimum Plus - Lighthouse #5091 LVP in Foyer, Great Room, Flex Room, Kitchen / Dining Area, Powder Room, Hall #1, Primary Bath, Bath #2, Bath #3, Laundry
- Shaw Graceful Finesse Concrete Carpeting

INTERIOR PAINT & TRIM

- Sherwin Williams Flat Primary Interior Color: First Star SW7646 w/ Matching Ceilings
- Kneewall on Stairs
- Bench & Cubby (Drop Zone): Painted Gale Force: SW7605 - Mud Room
- Tray Ceiling in Primary Bedroom

LIGHTING

- Seville Brushed Nickel Lighting Package (Whole House)
- Great Room & Primary Bedroom include a Brushed Nickel Designer Ceiling Fan w/ Light Kit
 - Linden 52" Traditional Ceiling Fan - 5LD52BSD

EXTERIOR

- Painted Craftsman 3-Light Glass View over 3-Panel Front Door Only w/ Smart Keypad Deadbolt Front Door
- Front Door Painted: Pineapple Cream SW1668
- Moire Black Dimensional Shingles
- BandSawn w/ Brackets Front Columns
- English Wedgewood Vinyl Body Siding
- English Wedgewood Vinyl Accent Board & Batten
- White Exterior Trim
- 4 over 1 White Windows
- White Gallery Steel Short Panel Garage Door
- White Gutters

DESIGN OPTIONS SUMMARY

STRUCTURAL	BASE PRICE: \$372,400
Optional Elevation F	\$1,750
Optional Rear Covered Porch – 10' x 12'	\$8,800
Optional Flex Room w/ French Doors	\$2,900

DESIGN CENTER OPTIONS \$9,122

Painted Craftsman 3-Light Glass View over 3-Panel Front Door Only
Add Smart Keypad Deadbolt Front Door
Add Bench and Cubby (Drop Zone) 6' WIDE
Paint Bench & Cubby Custom Semi-Gloss Color
Kitchen Level 1 Quartz
LVP Lvl 1 - Foyer (std.)
LVP Lvl 1 - Great Room
LVP Lvl 1 - Flex Room
LVP Lvl 1 - Kitchen/Dining Area
LVP Lvl 1 - Powder Room
LVP Lvl 1 - Hall #1
LVP Lvl 1 - Primary Bath
LVP Lvl 1 - Bath #2
LVP Lvl 1 - Bath #3
LVP Lvl 1 - Laundry
Stainless Steel Electric Range, Microwave, and Dishwasher

TOTAL OPTIONS ADDED \$22,572

TOTAL SALES PRICE: \$394,972