

Kettle Creek

HOMESITE 34

55 Kettle Creek Drive
Zebulon, NC

THE CARVER HOMEPLAN

ELEVATION C

2,152 SQFT | 4 BR | 2 BA | 3 CAR GARAGE



*Artistic Rendering not lot specific.
For representation purposes only.



1.09 ACRE

Kettle Creek offers spacious homesites ranging from 0.6 to over 2 acres, providing plenty of room to create your own private retreat. Located just outside Wake County in the growing Research Triangle Park region, the community blends peaceful living with convenience—only 25 minutes from downtown Raleigh and convenient access to RDU International Airport. Residents are also minutes from Five County Stadium, along with local dining, golf, disc golf, and small-town charm in nearby Zebulon, one of North Carolina's fastest-growing towns and highly rated schools.

NEW HOME SPECIALISTS

910.405.8311

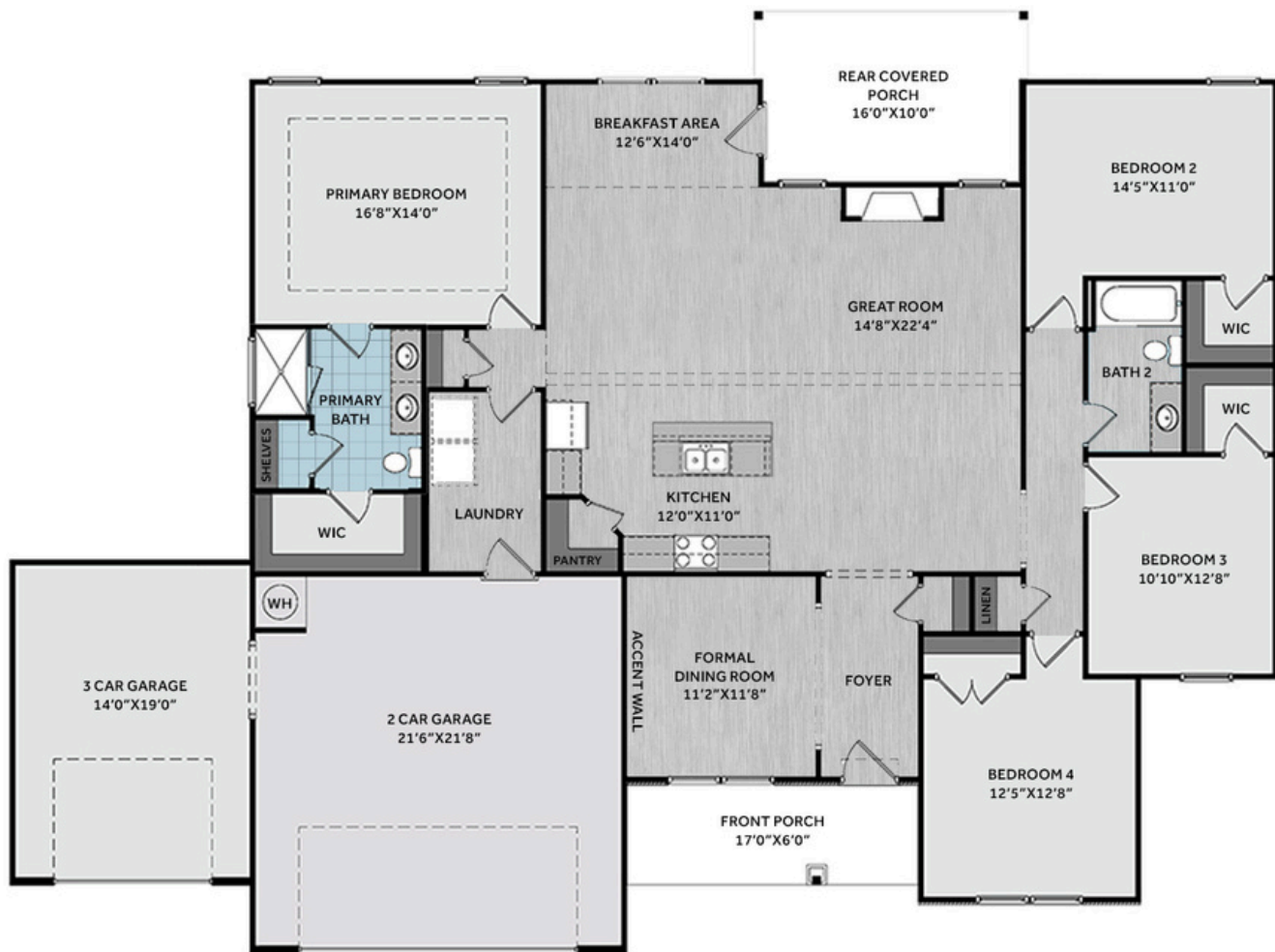
info@cavinessandcates.com



Photos, Options,

SALES AND MARKETING BY:





This thoughtfully designed home features an open great room with a cathedral ceiling, faux beam details, and a gas log fireplace with a stained mantel. Adjacent is a breakfast area with backyard views and access to a rear covered porch—ideal for outdoor living. The kitchen boasts "Trigato" quartz countertops, white shaker cabinets with a "Jade" accent island, picket ceramic backsplash, a corner pantry, and stainless-steel appliances. Off the foyer, a formal dining room showcases a SW "Retreat" accent wall. The primary suite includes a tray ceiling with crown molding, and an en suite bath with a white dual quartz sink vanity with a center drawer stack, walk-in tile shower, linen closet, and a large walk-in closet. Three additional bedrooms share access to a hall linen closet and a full bathroom with a vanity and a tub/shower combination. A mudroom is conveniently located near the garage entry. Exterior highlights include low-maintenance vinyl siding with shake and board and batten accents, stone skirts, dimensional roof shingles, and a welcoming front porch with a SW "Peppercorn" door with smart keypad entry. This Energy Plus certified home sits on a 1.09-acre lot and includes a 3-car garage and a 1-2-10 builder in-house warranty.

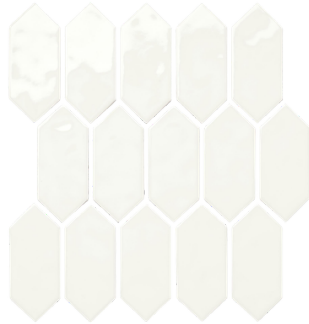
KITCHEN



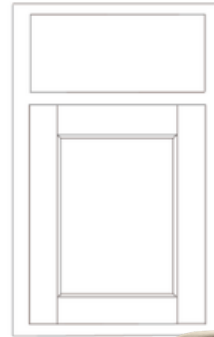
Color:
White



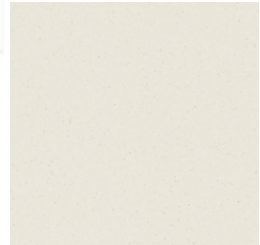
Color:
Jade



BATHROOM



Color:
White



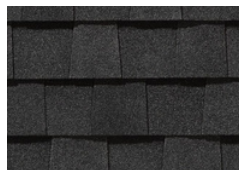
FLOORING



SV16



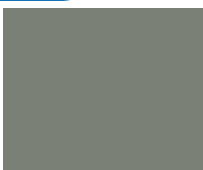
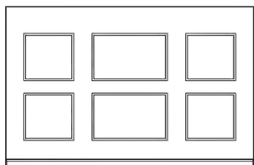
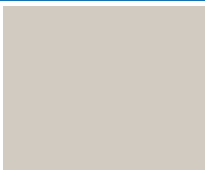
EXTERIOR



LIGHTING



PAINT



KITCHEN

- Brantford Brushed Nickel Kitchen Faucet w/ Pull-Down Spray
- Standard SS 50/50 Double Bowl Sink
- Fairmont White Flat Panel Cabinets w/ Brushed Nickel 6501195 Pulls
- Fairmont Jade Flat Panel Cabinet Accent Island
- 1/2 Bullnose Edge Trigato Quartz Countertops
- 2x5 Vertical Pickets - Mythology / MY90 2x5 Pickets w/ #44 Bright White Grout - Set Vertical Kitchen Backsplash
- Standard Kitchen Layout w/ 42" Wall Cabinets, Refrigerator End Panels, 2 ¼" Crown on Kitchen Cabinets
- Frigidaire Electric Stainless Steel Appliances (Dishwasher, Electric Range, and Over-the-Range Microwave)

BATHROOM

- Brantford 4" Spread Brushed Nickel Plumbing Package (Whole House)
- Simply White Quartz Countertops w/ Square Bowls
- Fairmont White Flat Panel Cabinets w/ Brushed Nickel BP9161196195 Pulls
- Primary Bath Adult Height Cabinets and 12" Stack of Drawers to Primary Vanity
- Raised/Elongated Toilets in Primary Bath and Bath #2
- Primary Bath 36"x60" Tile Shower - Wall: SV16 12x24 Staggered w/ #95 Mink Grout / Floor: SV16 2x2 Straight w/ #95 Mink Grout
- SV16 w/ #95 Mink Grout on Bath #2 Shower Surround

FLOORING

- House - Truffle #5235 LVP in Foyer, Great Room, Formal Dining Room, Kitchen/Breakfast Area, Hall #1, Hall #2, Bath #2, Laundry
- SV16 12x24 Staggered w/ #95 Mink Grout Ceramic Tiles in Primary Bath
- Graceful Finesse Concrete Carpeting

INTERIOR PAINT & TRIM

- Sherwin Williams Duration Flat Primary Interior Color: Agreeable Gray SW7029
- Tray Ceiling in Primary Suite
- Add Accent Wall Option #2 - Traditional Panel Accent Wall: Satin Painted Retreat SW6207 - Formal Dining Room

LIGHTING / ELECTRICAL

- Zire Lighting Package Brushed Nickel (Whole House)
- 2 Dianna Three Light Mini Lantern Pendants over Kitchen Island
 - Model: 5192603-962
- 4 LED Recess Lights in Kitchen
- 2 Bulb Floodlights on Rear Corners

FIREPLACE

- Gas Fireplace w/ Ozark Floating Mantel Stained in Loft Pine

EXTERIOR

- 6-Panel Front Door & Transom Package w/ Smart Keypad Deadbolt and Brushed Nickel Handleset
- Front Door Painted: Peppercorn SW7674
- Moire Black Dimensional Shingles
- Tapered / Stone Base Front Columns
- Sage Vinyl Body Siding
- Quiet Willow Shake Accent
- Quiet Willow Board & Batten Accent
- White Exterior Trim
- Tuxedo Gray Board & Batten Shutters
- 4 over 1 White Windows
- Bridgeport Steel Extended Panel Garage Doors w/ Spear Style Decorative Hardware and Glass Inserts
- White Gutters

DESIGN OPTIONS SUMMARY

STRUCTURAL

Optional Extended Rear Porch	BASE PRICE: \$441,504
Optional 3rd Car Garage	\$4,550
Optional Gas Fireplace	\$16,500
	\$2,310

DESIGN CENTER OPTIONS \$35,036

- Brantford 4" Spread Brushed Nickel Plumbing Package (Whole House)
- Raised/Elongated Toilet (x1- Bath #2)
- 6-Panel Front Door & Transom Package
- Kitchen Pendant Lights: Dianna Three Light Mini Lantern - 5192603-962 (x2- Over Kitchen Island)
- Add Recess Light Assembly to Non Standard Location (x4- Kitchen)
- Add Two - 2 Bulb Floodlights on Single Switch Circuit (Rear Corners)
- Add Smart Keypad Deadbolt Front Door
- Add Spear Style Decorative Hardware to Garage Doors (x2)
- Add Decorative Glass & Inserts to 16x7 Door
- Add Decorative Glass & Inserts to 9x7 Door
- Add Accent Wall Option #2 - Painted Traditional Panel Accent Wall - Formal Dining Room
- Kitchen - Add 42" Wall Cabinets
- Add Refrigerator End Panels to Standard Cabinet Layout
- Add 2 ¼" Crown to Standard Cabinet Layout
- Kitchen Island Multicolor Cabinet Option / Paint Island Drywall to Match Cabinet
- Primary Bath - Adult Height Vanity
- Add 12" Stack of Drawers to Primary Bath Vanity
- Kitchen Level 1 Quartz
- Upgrade all Vanity Bowls to Square Bowls
- Ozark Floating Mantel
- Sherwin Williams Duration Flat Paint Whole House Package
- LVP Level 2 - Foyer, Great Room, Formal Dining Room, Kitchen/Breakfast Area, Hall #1, Hall #2, Bath #2, Laundry
- Ceramic Tile Level 3- Primary Bath Opt. Layout
- Kitchen Backsplash: 2x5 Vertical Pickets - Mythology
- Level 3 Deluxe Tile Pattern - Option #1 Tile Shower 36"x60"
- Level 2 Tile Shower Floor - Option #1 Tile Shower 36"x 60"
- Zire Lighting Package Brushed Nickel (Whole House)
- Upgrade to Front Door Handleset
- Stainless Steel Electric Range, Microwave and Dishwasher

TOTAL OPTIONS ADDED	\$58,396
	TOTAL SALES PRICE: \$499,900

Disclaimer: In an effort to continuously improve and develop our products, Caviness & Cates reserves the right to change products, features, pricing, and specifications without prior notice. Features may vary between homes built within the same community. Please see actual home purchase & sale agreement for additional information, disclosures, and disclaimers. Plans are artistic renderings and may not reflect final product. All information on square footage, acreage, and dimensions should be considered approximate. Consult with New Homes Sales Specialist before writing an offer.