



1809 LIVE OAK

HOMESITE 108

237 Cline Way  
Beaufort, NC

### THE HARBOR HOMEPLAN

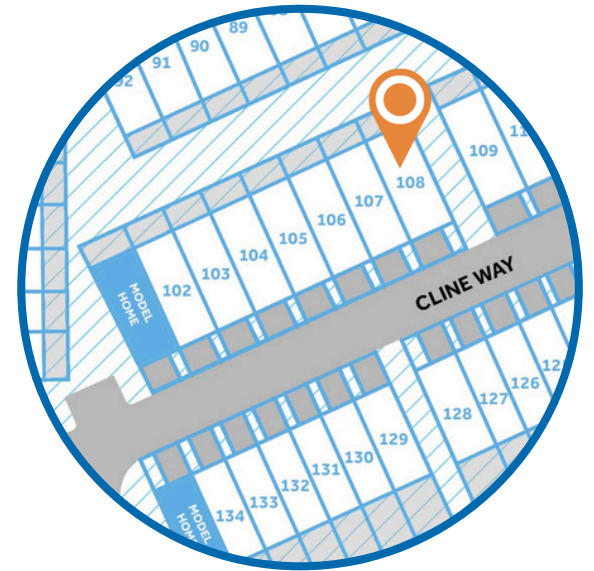
1,984 SQFT | 3 BR | 2.5 BA | 1 CAR GARAGE

\$389,900

DESIGNER FEATURES



Artistic Rendering not lot specific. For representation purposes only.



Discover coastal charm and modern convenience at 1809 Live Oak, a new townhome community by Caviness & Cates, nestled just off Live Oak Street in picturesque Beaufort, NC. These thoughtfully designed townhomes offer stylish, low-maintenance living, perfect for those seeking a relaxed coastal lifestyle. Enjoy easy access to Beaufort's historic waterfront, vibrant downtown, and the area's stunning natural beauty. With quality craftsmanship and a prime location, 1809 Live Oak provides the ideal blend of comfort and convenience, making it the perfect place to call home.

**NEW HOME SPECIALISTS**

910.405.8311

info@cavinessandcates.com



Photos, Options,  
Virtual Tours & More

SALES AND MARKETING BY:

*Mary Cheatham*  
**KING**  
REAL ESTATE

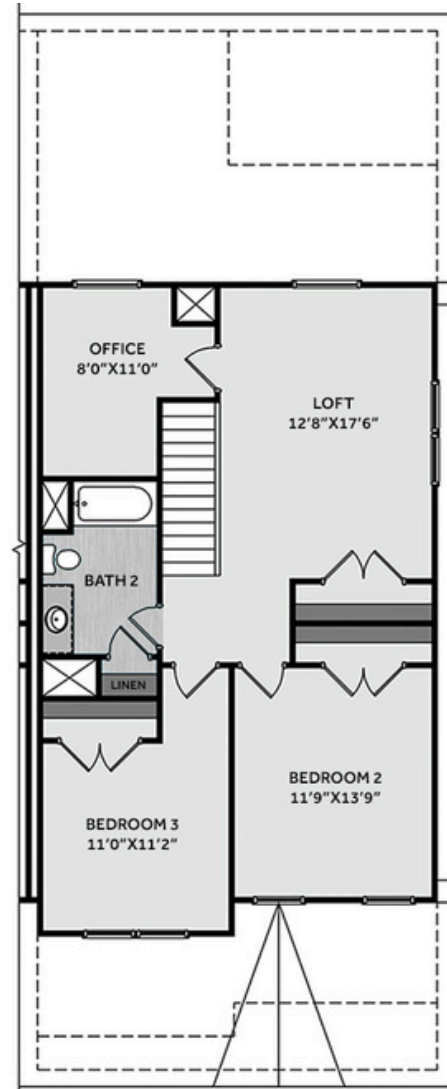
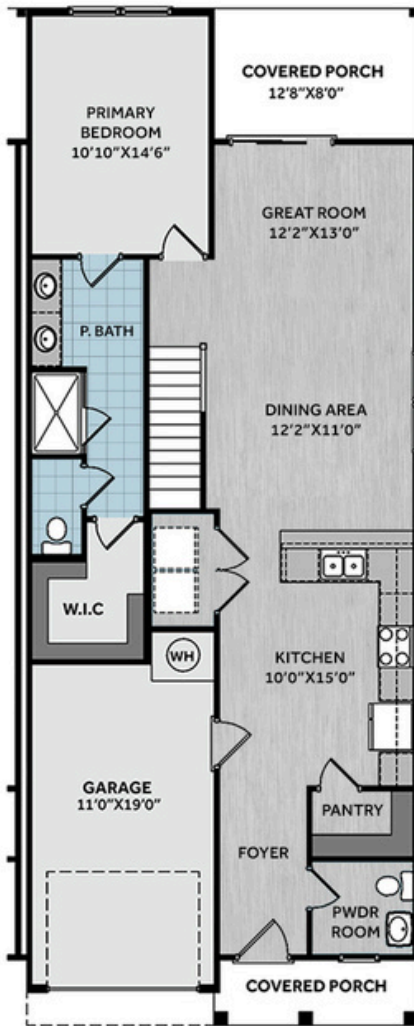
KELLER WILLIAMS CRYSTAL COAST



WWW.CAVINESSANDCATES.COM

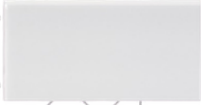


WWW.CATESBUILDING.COM

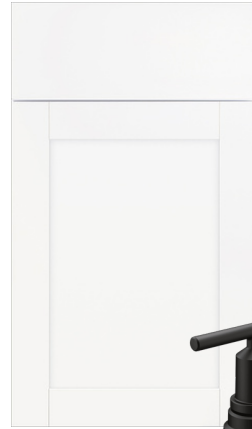


This stylish right-end-unit townhome offers low-maintenance living in a thoughtfully designed layout. Step into a welcoming foyer with a powder room, leading into an open-concept kitchen, dining area, and great room. The kitchen boasts a large peninsula with bar seating, "New Willow White" quartz countertops, white shaker cabinets, a white herringbone subway tile backsplash, stainless steel appliances—including a microwave, smooth-top range, and dishwasher—ample cabinet space, and a walk-in pantry. A laundry closet is conveniently located off the kitchen. The great room opens to a covered rear porch, perfect for relaxing or entertaining. Matte black finishes add modern flair, while durable LVP flooring enhances the first-floor main living areas. The first-floor primary suite features two-piece crown molding, along with an en-suite bathroom that includes a double vanity with "Carrara Delphi" quartz countertops, framed mirrors, a walk-in tile shower, private water closet, and a spacious walk-in closet. Upstairs features a loft with a closet and access to a home office, two additional bedrooms, and a full bath with a linen closet. Additional highlights include a 1-car garage with direct kitchen access, shake accents, dimensional roof shingles, and a front door in SW "Ripe Olive." Energy Plus certified and backed by a 1-2-10 builder warranty.

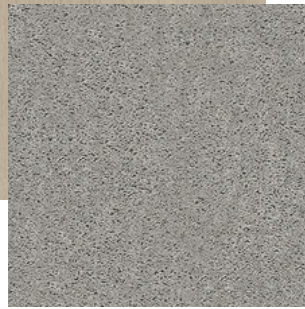
**KITCHEN**



**BATHROOM**



**FLOORING**



**EXTERIOR**



**LIGHTING**



**PAINT**



## KITCHEN

- Align Matte Black Kitchen Faucet w/ Pull-Down Spray
- Standard SS 50/50 Double Bowl Sink
- Binx White Flat Panel Cabinets w/ Matte Black BP7227128-900 Pulls
- Flat Polish Edge New Willow White Quartz Countertops
- 3x6 Subway Tile - Color Wheel Classic / 3x6 #0190 Arctic White Glossy w/ #44 Bright White Grout - Set in Herringbone Pattern Kitchen Backsplash
- Standard Kitchen Layout w/ 42" Wall Cabinets and 2 ¼" Crown on Kitchen Cabinets
- Ferguson/Frigidaire Electric Gallery Plus Stainless Steel Appliances (Dishwasher, Electric Range, and Over-the-Range Microwave)

## BATHROOM

- Gibson 4" Spread Matte Black Plumbing Package (Whole House)
- Carrara Delphi Quartz Countertops w/ Square Bowls
- Binx White Flat Panel Cabinets w/ Matte Black BP72096-900 Pulls
- Adult Height Cabinets in Primary Bath and Bath #2
- Raised/Elongated Toilets in Primary Bath, Powder Room, Bath #2
- Primary Bath 36"x60" Tile Shower - Wall: AQ01 12x24 Staggered w/ #95 Mink Grout / Floor: LP21 2x2 w/ #95 Mink Grout
- ARO4 w/ #90 Light Pewter Grout on Bath #2 Shower Surround

## FLOORING

- Homestead - Shell Taupe #5208 LVP in Foyer, Great Room, Kitchen / Dining Area, Powder Room, Bath #2, Laundry
- AQ01 12x24 Staggered w/ #95 Mink Grout Ceramic Tiles in Primary Bath
- Graceful Finesse Concrete Carpeting

## INTERIOR PAINT & TRIM

- Sherwin Williams Duration Flat Interior Color: Agreeable Gray SW7029 w/ White Ceilings
- Open Rails on 1st Floor
- Two Piece Crown Molding in Primary Suite

## LIGHTING / ELECTRICAL

- Fullton Lighting Package Midnight Black (Whole House)
- LED Recess Lights in Kitchen
- LED Recess Lights in Dining Area

## EXTERIOR

- 12 - Light Glass View Over 1 - Panel Front Door w/ Smart Keypad Deadbolt, Doorbell Camera, and Matte Black Handleset
- Front Door Painted: Ripe Olive SW6209
- Black Architectural Shingles
- Square Panel Front Columns
- Sage Vinyl Body Siding
- Alpine Forest Shake Accent
- White Exterior Trim
- Black Board & Batten Shutters
- 4 over 1 White Windows
- White Gallery Steel Long Panel Garage Door
- White Gutters
- Sod - Front, Sides, and Rear Yard w/ Community Irrigation