

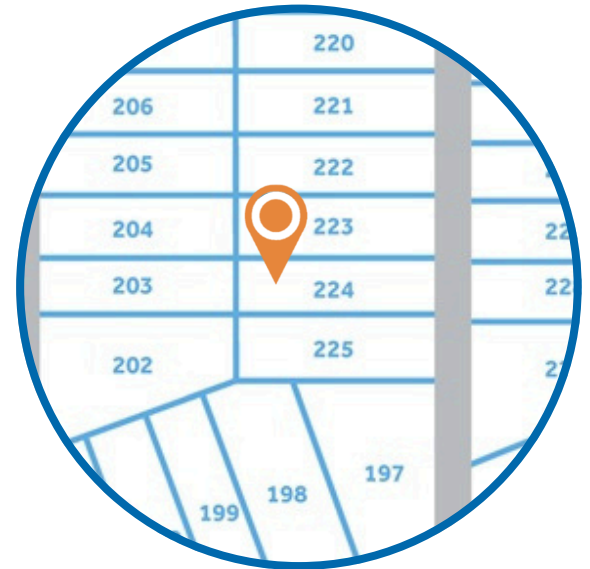
# MAGGIE WAY

**HOMESITE 224**  
210 Cardovia Way  
Wendell, NC

## THE DRAYTON HOMEPLAN

ELEVATION C

2,325 SQFT | 4 BR | 2.5 BA | 3 CAR GARAGE



.48± ACRE

Classic and understated style, coupled with an ideal location and approachable affordability lead you home to Maggie Way! Cool off by the pool or cast a line into the five-acre lake. Your community offers a spacious "Tot Lot" where kids of all ages will have room to roam and scale the brand-new playground.

Located in the peaceful rural community of Archer Lodge, Maggie Way might feel like a serene country escape, but it's only a few short minutes from the big city opportunities of Raleigh. For those who want the best of both worlds, who want big city life without being overwhelmed by it, who still love the scent of clean air and the sight of unsullied blue skies, and who want to work, play, and live their best lives in their own backyard, this is the place to be!

**NEW HOME SPECIALISTS**

910.405.8311

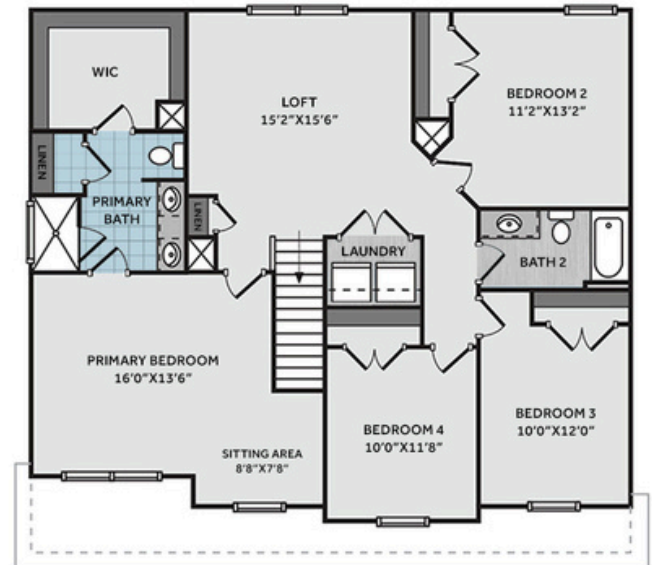
info@cavinessandcates.com



Photos, Options,  
Virtual Tours & More

SALES AND MARKETING BY:





This home features a formal dining room off the foyer with a panel accent wall painted in SW "Iron Ore," along with a coat closet and a convenient half-bath nearby. The open great room includes a gas log fireplace with a floating mantel and opens to the kitchen with a large island, "New Willow White" quartz countertops, white shaker cabinets with a "Pebble Gray" accent island, corner pantry, horizontal picket ceramic backsplash, and stainless-steel appliances including a microwave, dishwasher, and smooth-top range. The breakfast area leads to the covered rear porch. Upstairs, an open loft area provides additional living space, with a nearby linen closet and laundry room. The second-floor primary suite features a cozy sitting area and a bathroom containing a dual quartz sink vanity with a center drawer stack, walk-in tile shower, linen closet, and spacious walk-in closet. Three additional bedrooms and a full hall bathroom complete the second floor. Exterior highlights include low-maintenance vinyl siding with shake accents, dimensional roof shingles, a spacious front porch, and an SW "Poinsettia" front door with smart keypad entry to the home. This home includes a 3-car garage, Energy Plus certification, and a 1-2-10 builder in-house warranty.

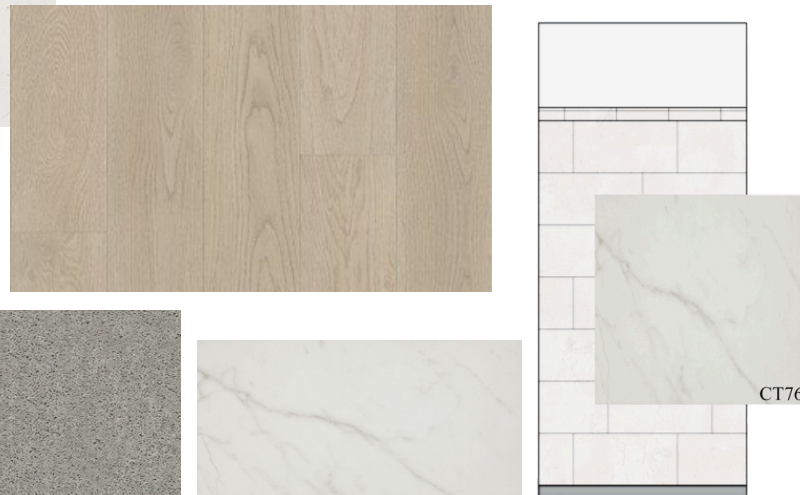
## KITCHEN



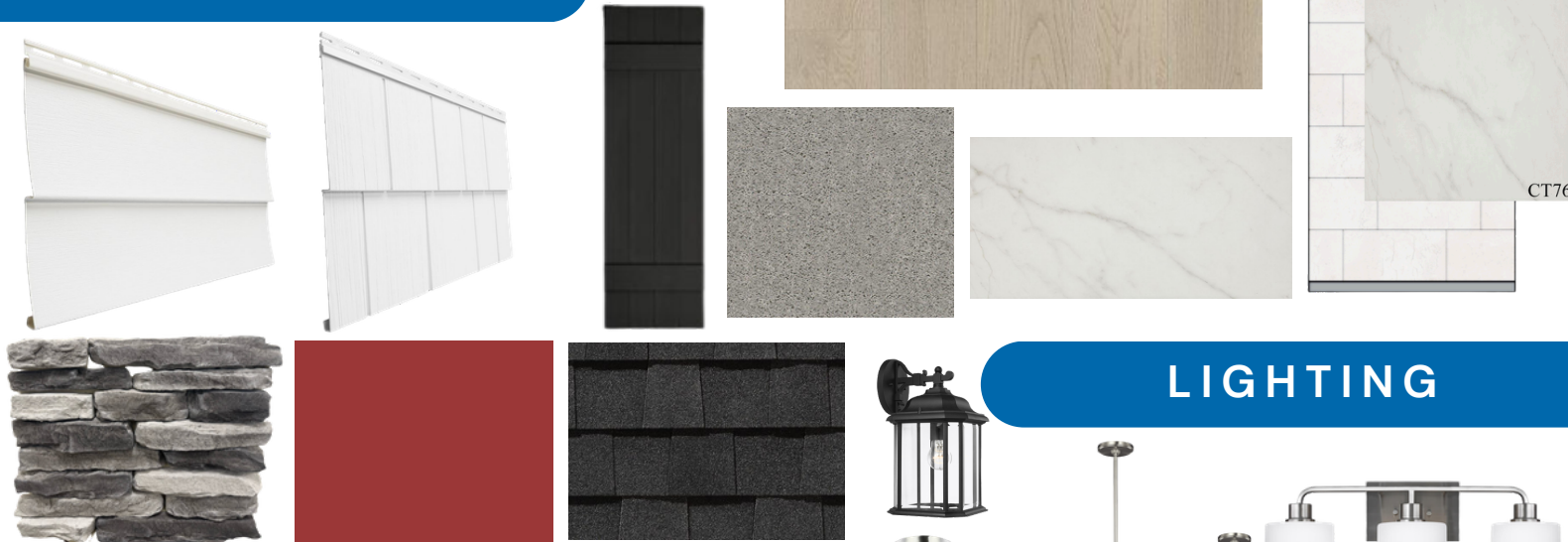
## BATHROOM



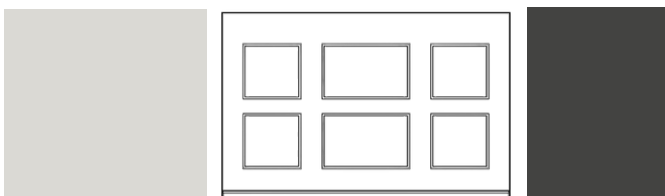
## FLOORING



## EXTERIOR



## PAINT



## LIGHTING



## KITCHEN

- Align Matte Black Kitchen Faucet w/ Pull-Down Spray
- Standard SS 50/50 Double Bowl Sink
- Fairmont White Flat Panel Cabinets w/ Matte Black BP20576-900 Pulls
- Fairmont Pebble Gray Flat Panel Accent Island
- ½ Bullnose Edge New Willow White Quartz Countertops
- 2x5 Horizontal Pickets - Mythology / MY90 Pickets w/ #44 Bright White Grout Kitchen Backsplash
- Standard Kitchen Layout w/ 42" Wall Cabinets, Refrigerator End Panels, 2 ¼" Crown on Kitchen Cabinets
- Frigidaire Electric Stainless Steel Appliances (Range, Microwave, and Dishwasher)

## BATHROOM

- Brantford 4" Spread Brushed Nickel Plumbing Package (Whole House)
- Niagara Quartz Countertops w/ Square Bowls
- Fairmont White Flat Panel Cabinets w/ Brushed Nickel BP9161196195 Pulls
- Primary Bath Adult Height Cabinets and 12" Stack of Drawers to Primary Vanity
- Raised/Elongated Toilets in Primary Bath, Powder Room, Bath #2
- Gerber Burr Ridge Pedestal Sink in Powder Room
- Deluxe Tile Pattern - Option #1 Primary Tile Shower 36" x 60" - Wall: CT76 12x24 Staggered w/ #89 Smoke Gray Grout / Floor: CT76 2x2 Straight w/ #89 Smoke Gray Grout
- SQ20 w/ #89 Smoke Gray Grout on Bath #2 Shower Surround

## FLOORING

- Homestead - Shell Taupe #5208 LVP in Foyer, Great Room, Formal Dining Room, Kitchen / Breakfast Area, Powder Room, Bath #2, Laundry
- CT76 12x24 Staggered w/ #89 Smoke Gray Grout Ceramic Tiles in Primary Bath
- Graceful Finesse Concrete Carpeting

## INTERIOR PAINT & TRIM

- Sherwin Williams Duration Flat Primary Interior Color: First Star SW7646
- Level 1 Open Rails 1st Floor
- Accent Wall Option #2 - Traditional Panel Accent Wall: Satin Painted Iron Ore SW7069 - Formal Dining Room

## LIGHTING / ELECTRICAL

- Canfield Lighting Package Brushed Nickel (Whole House)
- 2 Zire One Light Pendants over Kitchen Island
  - Model: 6590301-112
- 4 LED Recess Lights in Kitchen
- 2 Bulb Floodlights on Rear Corners

## FIREPLACE

- Gas Fireplace w/ Fillmore Floating Mantel Stained Gray Chestnut

## EXTERIOR

- Paint Grade Smooth, 6-Panel Front Door, 2 ½ Light Sidelights & Transom Package w/ Smart Keypad Deadbolt and Brushed Nickel Handleset
- Front Door Painted: Poinsettia SW6594
- Moire Black Dimensional Shingles
- Tapered Columns with Stone Base
- Norris Gray LedgeStone Facade
- White Vinyl Body Siding
- White Shake Accent
- White Exterior Trim
- Black Board & Batten Shutters
- 4 over 1 White Windows
- Gallery Steel Short Panel Garage Door w/ Glass Inserts and Decorative Hardware
- Black Gutters



# THE DRAYTON HOMEPLAN

LOT 224 | ELEVATION C  
2,325 SQFT | 4 BR | 2.5 BA | 3 CAR GARAGE

## DESIGN OPTIONS SUMMARY

<b>STRUCTURAL</b>	<b>BASE HOUSE PRICE: \$442,600</b>
Optional 3 <sup>rd</sup> Car Garage	\$16,500
Optional Rear Covered Porch - 10' x 12'	\$8,800
Optional Gas Fireplace on Exterior Wall	\$1,650

### DESIGN CENTER OPTIONS \$35,344

- Align Kitchen Faucet w/ Pull-Down Spray
- Brantford 4" Spread Brushed Nickel Plumbing Package (Whole House)
- Raised/Elongated Toilet - Secondary Bath (x2- Powder Room, Bath #2)
- Upgrade to Gerber Burr Ridge Pedestal Sink in Powder Room
- 6-Panel Front Door, 2 ½ Light Sidelights & Transom Package
- Pendant Lights: Zire One Light Pendant - 6590301-112 -Includes Install Labor (x2- Over Kitchen Island)
- Add Recess Light Assembly to Non Standard Location (x4- Kitchen)
- Add Two - 2 Bulb Floodlights on Single Switch Circuit (Rear Corners)
- Add Smart Keypad Deadbolt Front Door
- Add Spear Style Decorative Hardware to Garage Doors (x2)
- Add Decorative Glass & Inserts to 16x7 Door
- Add Decorative Glass & Inserts to 9x7 Door
- Add Accent Wall Option #2 - Painted Traditional Panel Accent Wall - Formal Dining Room
- Level 1 Rails 1st Floor
- Add 42" Wall Cabinets - Kitchen
- Add Refrigerator End Panels to Standard Cabinet Layout
- Add 2 ¼" Crown to Standard Cabinet Layout
- Kitchen Island Multicolor Cabinet Option
- Primary Bath - Adult Height Vanity
- Add 12" Stack of Drawers to Primary Vanity
- Kitchen Level 1 Quartz
- Upgrade all Bath Vanity Bowls to Square Bowls
- Fillmore Floating Mantel
- Sherwin Williams Duration Flat Paint Whole House Package
- LVP Lvl 2 - Foyer, Great Room, Formal Dining Room, Kitchen / Breakfast Area, Powder Room, Bath #2, Laundry
- Ceramic Tile Level 3 - Primary Bath Opt. Layout
- Kitchen Backsplash: 2x5 Horizontal Pickets - Mythology
- Level 3 Deluxe Tile Pattern - Option #1 Tile Shower 36" x 60"
- Canfield Lighting Package Brushed Nickel (Whole House)
- Upgrade to Front Door Handleset
- Stainless Steel Electric Range, Microwave and Dishwasher

**TOTAL OPTIONS ADDED \$62,294**

**TOTAL SALES PRICE:\$504,894**

Disclaimer: In an effort to continuously improve and develop our products, Caviness & Cates reserves the right to change products, features, pricing, and specifications without prior notice. Features may vary between homes built within the same community. Please see actual home purchase & sale agreement for additional information, disclosures, and disclaimers. Plans are artistic renderings and may not reflect final product. All information on square footage, acreage, and dimensions should be considered approximate. Consult with New Homes Sales Specialist before writing an offer.

