

Blakefield

HOMESITE 300
4279 Halkirk Drive
Fayetteville, NC

THE DRAYTON HOMEPLAN

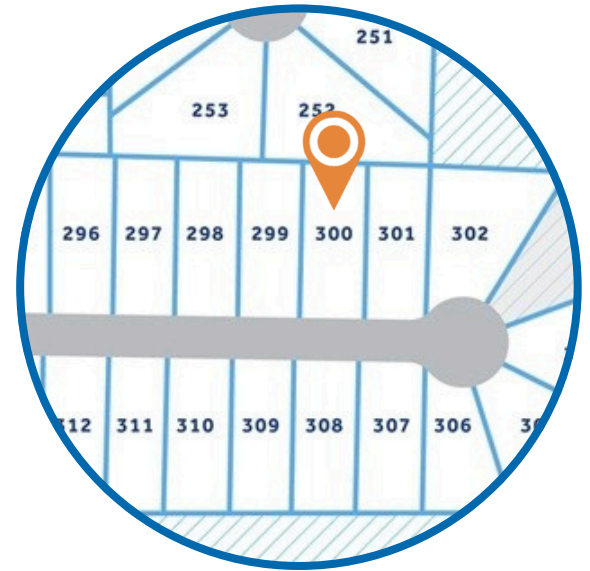
ELEVATION A

2,325 SQFT | 4 BR | 2.5 BA | 2 CAR GARAGE



*Artistic Rendering not lot specific.
For representation purposes only.

\$349,900



.28 ACRE

Nestled near Eastover and Fayetteville, Blakefield features spacious homesites in a scenic, rural setting while keeping you close to everything you need.

Enjoy easy access to shopping, dining, and entertainment, including Baywood Golf & Country Club, Cape Fear Botanical Garden, and beautiful natural parks. With downtown Fayetteville minutes away, Ft. Bragg less than 20 miles away, and schools just minutes from your doorstep, Blakefield offers the perfect location for growing families to call home.

NEW HOME SPECIALISTS

910.405.8311

info@cavinessandcates.com

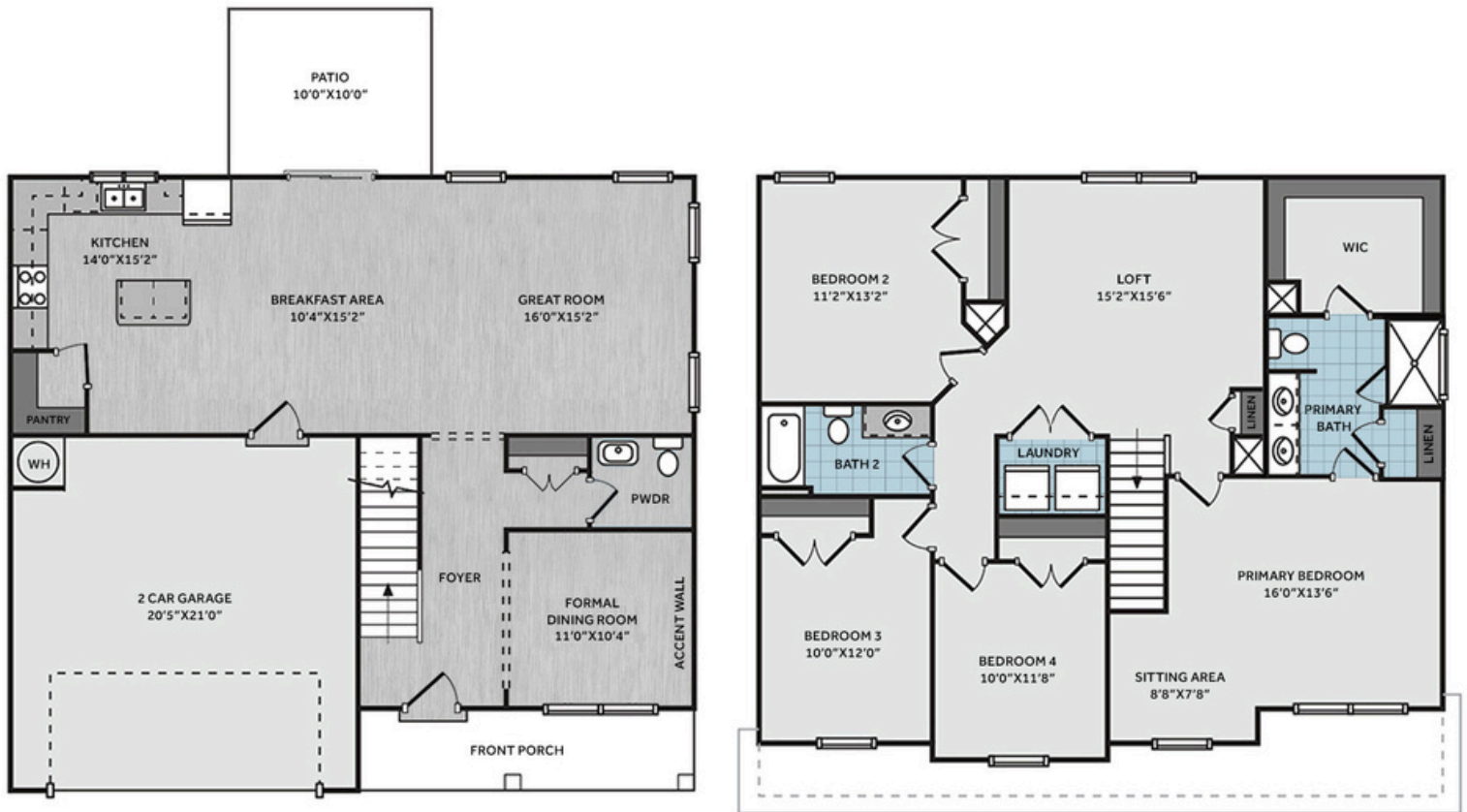


Photos, Options,
Virtual Tours & More

SALES AND MARKETING BY:



Builder's Marketing Group
WWW.CAVINESSANDCATES.COM



Just off the foyer, the dining room showcases a square panel accent wall painted in SW "Gale Force," and is conveniently located near a coat closet and half bath. The open great room flows into the kitchen, which boasts a spacious island, "Luna Pearl" granite countertops, white shaker cabinets, a corner pantry, and stainless-steel appliances including a microwave, dishwasher, and smooth top range. The breakfast area leads to the grill patio. Upstairs, an open loft area provides additional living space, with a nearby linen closet and laundry room. The second-floor primary suite features a cozy sitting area and a bathroom containing a dual quartz sink vanity, walk-in shower, linen closet, and spacious walk-in closet. Three additional bedrooms and a full hall bathroom complete the second floor. Exterior highlights include low-maintenance vinyl siding with shake accents, dimensional roof shingles, a spacious front porch, and a SW "Sea Serpent" front door with smart keypad entry to the home. This home includes a 2-car garage, fiber optic internet availability, Energy Plus certification, and a 1-2-10 builder in-house warranty.

KITCHEN



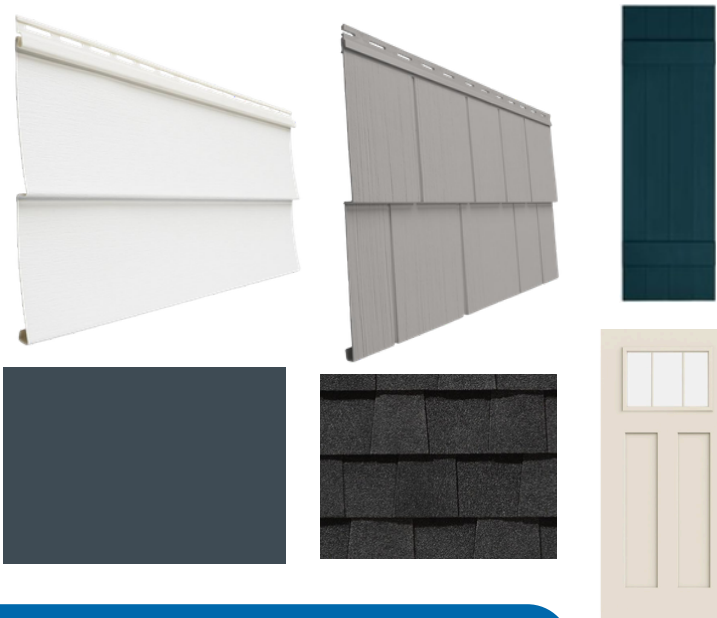
BATHROOM



FLOORING



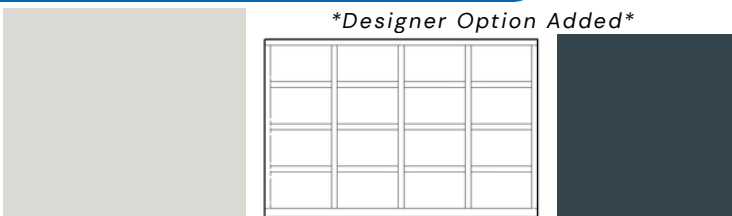
EXTERIOR



LIGHTING



PAINT



Designer Option Added

APPLIANCES



KITCHEN

- Moen Method One-Handle Pullout Kitchen Faucet in a Spot Resist™ Stainless Finish
- Standard Stainless Steel 50/50 Double Bowl Sink
- NexGen Shaker White Flat Panel Cabinets w/ BP20576195 Brushed Nickel Pulls
- Soft Close Hinges on Cabinet Doors
- 1/2 Bullnose Luna Pearl Granite Countertops w/ 4" Splash
- Frigidaire Electric Stainless Steel Appliances
 - 30" Electric Range with EvenTemp™ - FCRE3062AS
 - 1.8 Cu. Ft. Over-The-Range Microwave - FMOS1846BS
 - 24" Built-In Tall Tub Dishwasher - FDPC4314AS

BATHROOM

- Moen Chateau Chrome Plumbing Package (Whole House)
- Arctic White Quartz Countertops w/ Square Bowls
- NexGen Shaker White Flat Panel Cabinets w/ BP20576195 Brushed Nickel Pulls
- Soft Close Hinges on Cabinet Doors
- Adult Height Cabinets in Primary Bath & Bath #2
- Gerber Maxwell Petit Pedestal Sink in Powder Room
- Raised/Elongated ADA Gerber Maxwell Toilet in Primary Bath & Gerber Maxwell Round Bowl Toilet in Powder Room, Bath #2

FLOORING

- Shaw Optimum Plus - Oyster Oak #591 LVP in Foyer, Great Room, Formal Dining Room, Kitchen / Breakfast Area, Powder Room
- Shaw Streamline - Carrara White #1182 Vinyl in Primary Bath, Bath #2, Laundry
- Shaw Graceful Finesse Concrete Carpeting in Primary Bedroom/WIC, Bedroom #2, Bedroom #3, Bedroom #4, Loft, Stairs

INTERIOR PAINT & TRIM

- Sherwin Williams Flat Primary Interior Color: First Star SW7646 w/ White Ceilings
- Embark Trim Package w/ 3 ¼" Baseboard and 2 ¼" Casings on all Doors & Windows
- Square Panel Accent Wall Painted: Gale Force SW7605 - Formal Dining Room
- Kneewall on Stairs

LIGHTING

- Embark Generation Lighting Package Brushed Nickel
- Kitchen Lighting w/ Traverse Mirage Fixtures
- Great Room & Primary Bedroom include a Brushed Nickel Designer Ceiling Fan w/ Light Kit
 - Linden 52" Traditional Ceiling Fan - 5LD52BSD

EXTERIOR

- Painted Craftsman 3-Light Glass View over 3-Panel Front Door w/ Smart Keypad Deadbolt
- Front Door Painted: Sea Serpent SW7615
- Moire Black Dimensional Shingles
- White Vinyl Body Siding
- Harbor Gray Shake Accent
- White Exterior Trim
- Midnight Blue Board & Batten Shutters
- 4 over 1 White Windows
- White Gallery Steel Short Panel Garage Door
- White Gutters on Front of Home