

LONG POINT

RESERVE

HOMESITE 60

271 Elijah Way
Vass, NC

THE DRAYTON HOMEPLAN

ELEVATION F

2,325 SQFT | 4 BR | 2.5 BA | 2 CAR GARAGE



.309 ACRE

Welcome to Long Point Reserve, a thoughtfully designed community just off US-1 in the peaceful town of Vass. Offering a selection of townhomes and single-family homes starting from the \$300s, this neighborhood blends countryside tranquility with modern convenience. Residents will enjoy a range of amenities, including a swimming pool and pool house, a scenic walking trail through the pines, and a proposed dog park for four-legged companions. Ideally located, Long Point Reserve is only 15 minutes from Southern Pines, 35 minutes from Fort Bragg via NC-690, and under an hour from Raleigh. Here, residents can experience the charm of rural living with easy access to shopping, dining, and recreation. With its welcoming community, natural beauty, and thoughtful design, Long Point Reserve offers the perfect balance of comfort, connection, and Carolina charm.

NEW HOME SPECIALISTS

910.405.8311

info@cavinessandcates.com



Photos, Options,
Virtual Tours & More

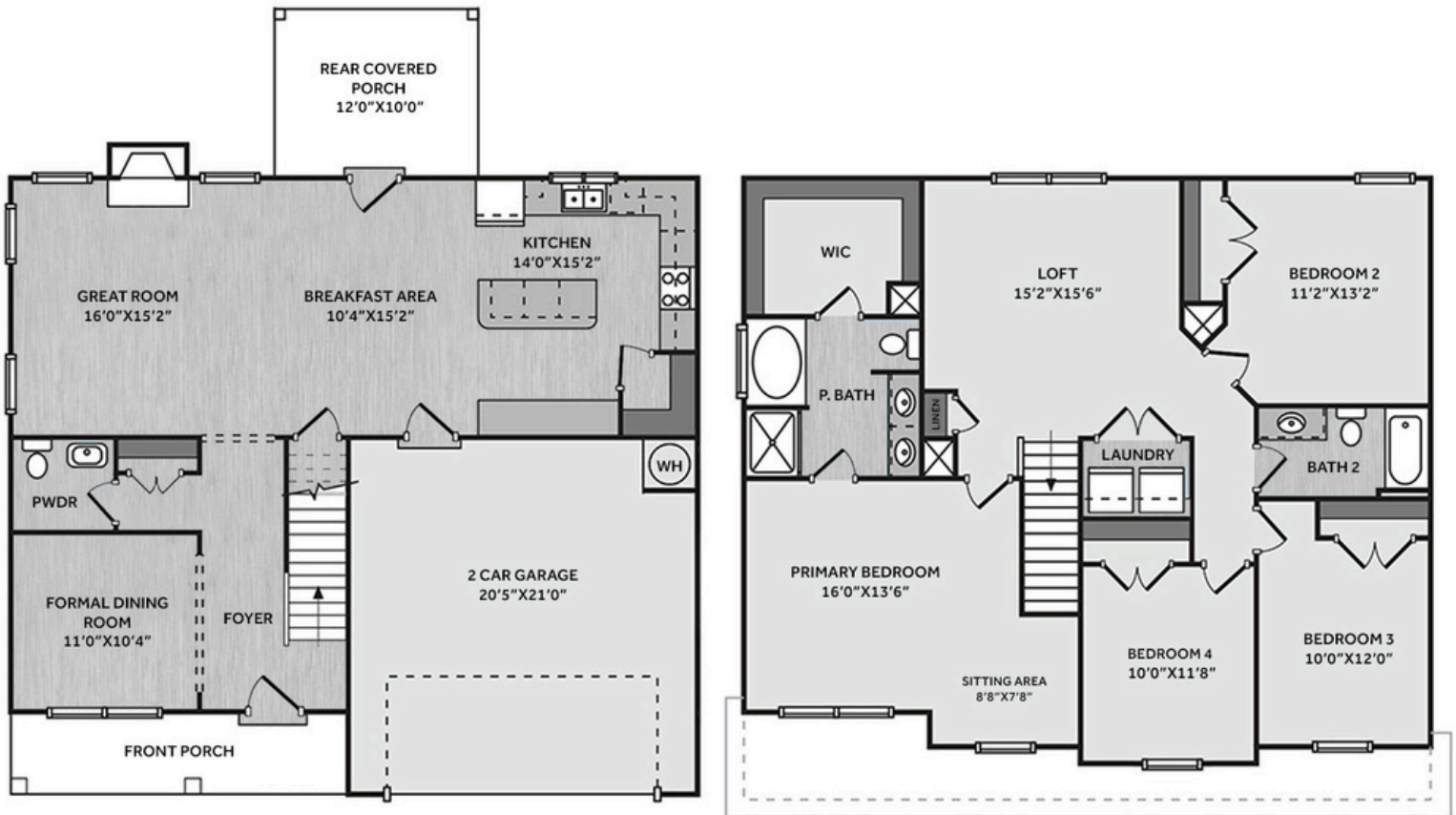
SALES AND MARKETING BY:



LIFESTYLE
PROPERTY
PARTNERS



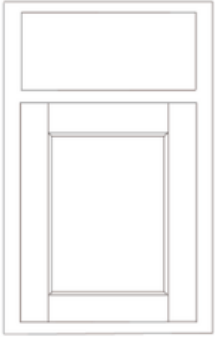
WWW.CAVINESSANDCATES.COM



This home features a foyer with two-piece crown molding and wainscoting, with a dining room off the foyer, plus a coat closet and a convenient half-bath. The open great room features an electric fireplace with black granite surround and opens to the kitchen with a large island, "Azul Platino" granite countertops, white shaker cabinets, corner pantry, white subway tile backsplash, and stainless-steel appliances including a microwave, dishwasher, and smooth-top range. The breakfast area leads to the covered rear porch. Upstairs, an open loft area provides additional living space, with a nearby linen closet and laundry room. The second-floor primary suite features a cozy sitting area and a bathroom containing a white dual sink vanity with a "Niagara" quartz countertop, garden tub, walk-in shower, and spacious walk-in closet. Three additional bedrooms and a full hall bathroom complete the second floor. Exterior highlights include low-maintenance vinyl siding with board and batten accents, dimensional roof shingles, a spacious front porch, and a SW "Pineapple Cream" front door with smart keypad entry to the home. This home includes a 2-car garage, fiber optic internet service availability, Energy Plus certification, and a 1-2-10 builder in-house warranty.

KITCHEN

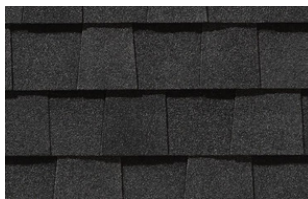
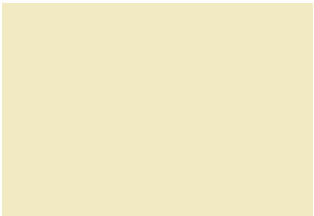
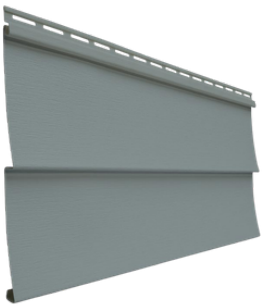
Door Style:
Fairmont



Color:
White



EXTERIOR

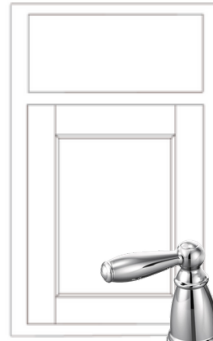


PAINT



BATHROOM

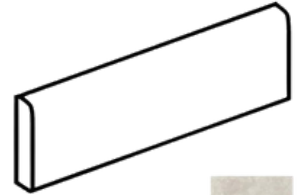
Door Style:
Fairmont



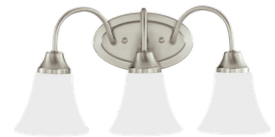
Color:
White



FLOORING



LIGHTING



KITCHEN

- Brushed Nickel Brantford Kitchen Sink Fixture
- Standard SS 50/50 Double Bowl Sink
- Fairmont White Flat Panel Cabinets w/ Brushed Nickel 6501195 Pulls
- 1/2 Bullnose Azul Platino Granite Countertops
- 3x6 Subway Tile - Color Wheel Classic / 3x6 #0190 Arctic White Glossy w/ #44 Bright White Grout - Set in Brick Pattern Kitchen Backsplash
- Standard Kitchen Layout w/ 42" Wall Cabinets, and 2 ¼" Crown on Kitchen Cabinets
- Frigidaire Electric Stainless Steel Appliances (Dishwasher, Electric Range, and Over-the-Range Microwave)

BATHROOM

- Brantford 4" Spread Chrome Plumbing Package (Whole House)
- Niagara Quartz Countertops w/ Square Bowls
- Fairmont White Flat Panel Cabinets w/ Chrome BP9161196180 Pulls
- Primary Bath Adult Height Cabinets
- Adult Height Cabinets in Bath #2
- Raised/Elongated Toilets in Primary Bath, Powder Room, Bath #2
- Small Pedestal Sink in Powder Room
- ARO4 w/ #93 Fossil Grout Ceramic Tile Primary Shower Surround and ARO4 12x12 w/ #93 Fossil Grout Ceramic Tile Garden Tub Surround
- ARO4 w/ #93 Fossil Grout on Bath #2 Shower Surround

FLOORING

- Optimum Plus - Driftwood #1056 LVP in Foyer, Great Room, Formal Dining Room, Kitchen / Breakfast Area, Powder Room, Primary Bath, Bath #2, Laundry
- Graceful Finesse Concrete Carpeting

INTERIOR PAINT & TRIM

- Sherwin Williams Flat Primary Interior Color: First Star SW7646 w/ Matching Ceiling
- Board & Batten Style Wainscot w/ 2 Piece Crown Molding in Foyer
- Pull Down Attic Stairs
- Level 1 Open Rails on 1st Floor

FIREPLACE

- Electric Fireplace w/ Wescott Mantel and Absolute Black Granite Surround

LIGHTING / ELECTRICAL

- Seville Lighting Package Brushed Nickel (Whole House)
- 2 Feiss Tabby One Light Pendants over Kitchen Island
 - Model: P1308BS
- 2 Bulb Floodlights on Rear Corners

EXTERIOR

- 6-Panel Front Door & Transom Package w/ Smart Keypad Deadbolt and Brushed Nickel Handleset
- Front Door Painted: Pineapple Cream SW1668
- Moire Black Dimensional Shingles
- Band Sawn w/ Brackets Front Columns
- English Wedgewood Vinyl Body Siding
- English Wedgewood Board & Batten Accent
- White Exterior Trim
- 4 over 1 White Windows
- White Gallery Steel Long Panel Garage Door
- White Gutters



THE DRAYTON HOMEPLAN

LOT 60 | ELEVATION F
2,325 SQFT | 4 BR | 2.5 BA | 2 CAR GARAGE

DESIGN OPTIONS SUMMARY

STRUCTURAL

Optional Elevation F	\$1,750
Optional Rear Covered Porch – 12’ x 10’	\$8,800
Optional Electric Fireplace	\$1,650

DESIGN CENTER OPTIONS \$14,063

- Raised/Elongated Toilets (x2- Powder Room, Bath #2)
- 6-Panel Front Door & Transom Package
- Kitchen Pendant Lights: Feiss Tabby One Light Pendant – P1308BS (x2- Over Kitchen Island)
- Add Two – 2 Bulb Floodlights on Single Switch Circuit (Rear Corners)
- Add Smart Keypad Deadbolt Front Door
- Add Level 2 Board & Batten Style Wainscot – Foyer
- Add 2 Piece Crown Molding – Foyer
- Level 1 Rails 1st Floor
- Pull Down Attic Stairs
- Kitchen – Add 42" Wall Cabinets
- Kitchen – Add 2 ¼" Crown to Standard Cabinet Layout
- Primary Bath – Adult Height Vanity
- Hall Bath – Adult Height Vanity (x1- Bath #2)
- Kitchen Level 2 Granite
- Upgrade all Vanity Bowls to Square Bowls
- Level 1 Fireplace Mantel
- Level 1 Fireplace Surround
- LVP Level 1 – Foyer
- LVP Level 1 – Great Room
- LVP Level 1 – Formal Dining Room
- LVP Level 1 – Kitchen/Breakfast Area
- LVP Level 1 – Powder Room
- LVP Level 1 – Primary Bath
- LVP Level 1 – Bath #2
- LVP Level 1 – Laundry
- Kitchen Backsplash: 3x6 Subway Tile – Color Wheel Classic
- Upgrade to Front Door Handleset
- Stainless Steel Electric Range, Microwave and Dishwasher

TOTAL OPTIONS ADDED \$26,263

TOTAL SALES PRICE: \$418,305

Disclaimer: In an effort to continuously improve and develop our products, Caviness & Cates reserves the right to change products, features, pricing, and specifications without prior notice. Features may vary between homes built within the same community. Please see actual home purchase & sale agreement for additional information, disclosures, and disclaimers. Plans are artistic renderings and may not reflect final product. All information on square footage, acreage, and dimensions should be considered approximate. Consult with New Homes Sales Specialist before writing an offer.

