



DUCKS LANDING

HOMESITE 79
402 Black Duck Lane
Lillington, NC

THE GRAHAM HOMEPLAN

ELEVATION F

2,058 SQFT | 3 BR | 2.5 BA | 2 CAR GARAGE

\$349,900



.56 ACRE

Nestled in the serene countryside of Lillington, North Carolina, just off Darroch Road, Duck's Landing offers the fresh, clean air of a rural location, along with the necessities and conveniences of modern life. Local attractions, like the charming downtown Lillington Square, are just a short drive away, offering unique shops, delicious local eateries, and community events that foster a strong sense of belonging. The Cape Fear River, a local treasure, provides opportunities for kayaking, fishing, and scenic walks, inviting residents to connect with nature.

For those connected to the military, the community's proximity to Fort Bragg is a significant advantage, offering an easy commute for service members and their families. This accessibility balances the peaceful rural lifestyle with the demands of military life.

NEW HOME SPECIALISTS

910.405.8311

info@cavinessandcates.com



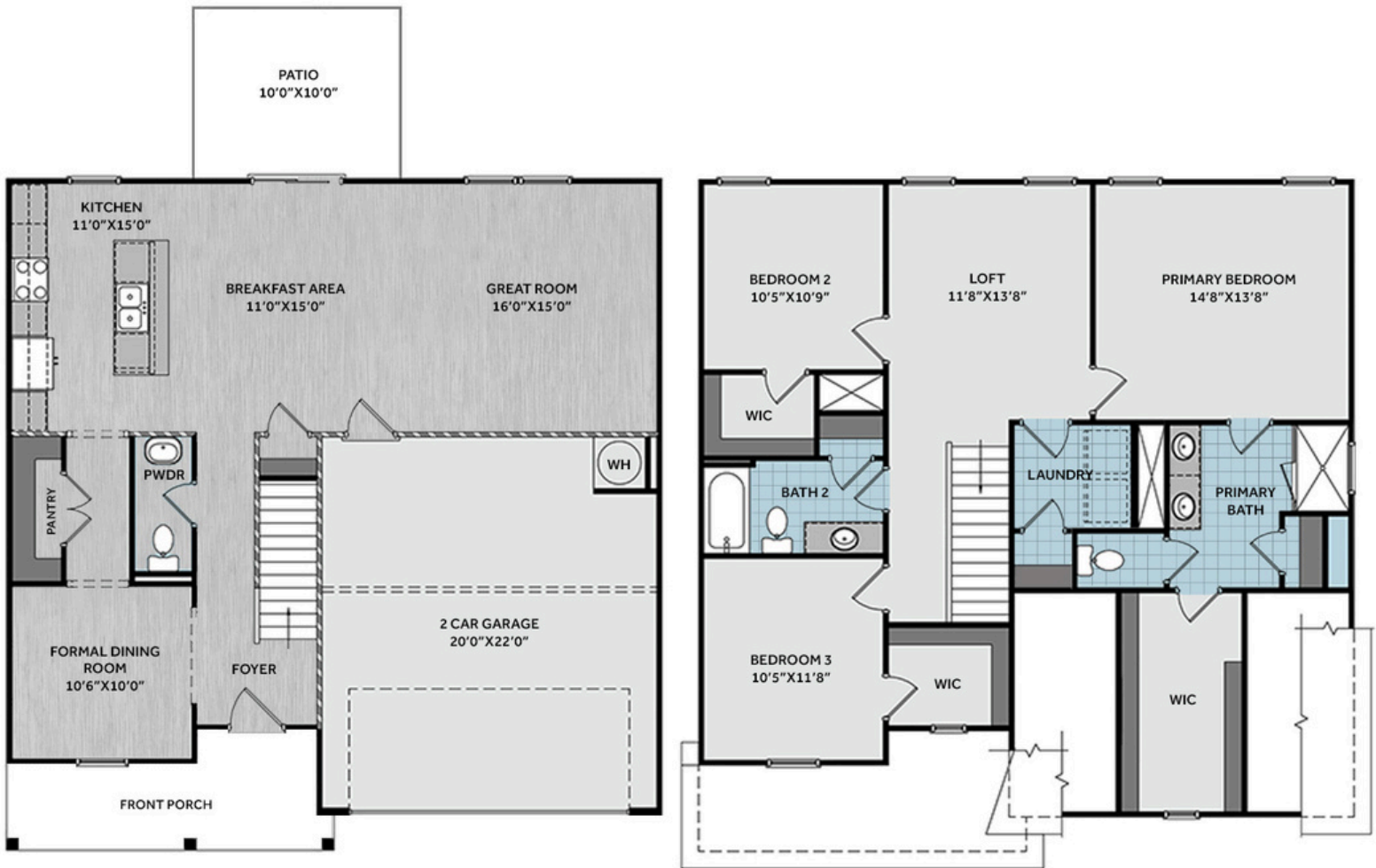
Photos, Options,
Virtual Tours & More



WWW.CATESBUILDING.COM



WWW.CAVINESSANDCATES.COM

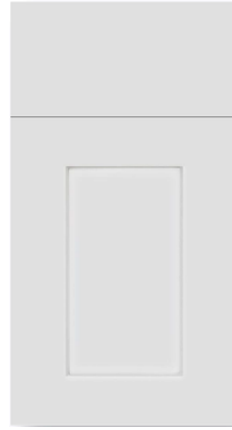


Set on a 0.56-acre lot, this home features a formal dining room option and half-bath off the foyer. The open layout connects the kitchen, breakfast area, and great room and opens to a grill patio. The kitchen includes an eat-in island, shaker cabinets, granite countertops, pantry, and stainless-steel appliances including a microwave, dishwasher, and smooth top range. Upstairs, a loft adds living space, with a nearby laundry room and linen closet. The primary suite features an en-suite bath with a dual sink vanity, walk-in shower, private water closet, and large walk-in closet with a window. Two additional bedrooms with walk-in closets share a full hall bath with a vanity, tub/shower combo, and linen storage. Exterior highlights include a spacious front porch, low-maintenance vinyl siding, dimensional roof shingles, and smart keypad entry. Also included: 2-car garage, fiber optic internet availability, Energy Plus certification, and a 1-2-10 builder in-house warranty.

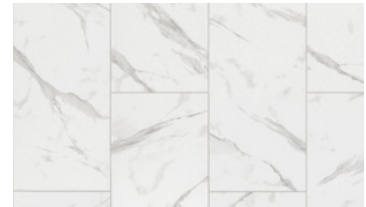
KITCHEN



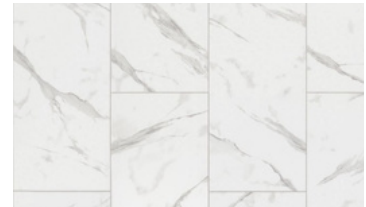
BATHROOM



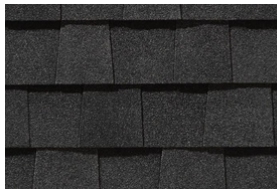
FLOORING



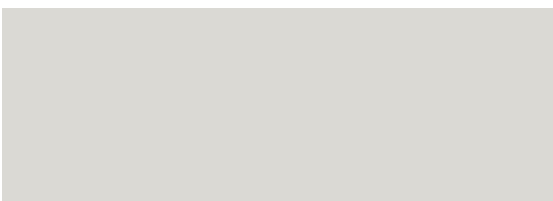
EXTERIOR



LIGHTING



PAINT



APPLIANCES



KITCHEN

- Moen Method One-Handle Pullout Kitchen Faucet in a Spot Resist™ Stainless Finish
- Standard Stainless Steel 50/50 Double Bowl Sink
- NexGen Shaker White Flat Panel Cabinets w/ BP20576195 Brushed Nickel Pulls
- Soft Close Hinges on Cabinet Doors
- 1/2 Bullnose Azul Platino Granite Countertops w/ 4" Splash
- Frigidaire Electric Stainless Steel Appliances
 - 30" Electric Range with EvenTemp™ - FCRE3062AS
 - 1.8 Cu. Ft. Over-The-Range Microwave - FMOS1846BS
 - 24" Built-In Tall Tub Dishwasher - FDPC4314AS

BATHROOM

- Moen Chateau Chrome Plumbing Package (Whole House)
- Frost White Quartz Countertops w/ Square Bowls
- NexGen Shaker White Flat Panel Cabinets w/ BP20576195 Brushed Nickel Pulls
- Soft Close Hinges on Cabinet Doors
- Adult Height Cabinets in Primary Bath & Bath #2
- Raised/Elongated ADA Gerber Maxwell Toilet in Primary Bath & Gerber Maxwell Round Bowl Toilet in Powder Room, Bath #2
- Gerber Maxwell Petit Pedestal Sink in Powder Room

FLOORING

- Shaw Optimum Plus - Driftwood #1056 LVP in Foyer, Great Room, Formal Dining Room, Kitchen / Breakfast Area, Powder Room
- Shaw Streamline - Carrara White #1182 Vinyl in Primary Bath, Bath #2, Laundry
- Shaw Graceful Finesse Concrete Carpeting in Primary Bedroom/WIC, Bedroom #2, Bedroom #3, Loft, Stairs

INTERIOR PAINT & TRIM

- Sherwin Williams Flat Primary Interior Color: First Star SW7646 w/ White Ceilings
- Embark Trim Package w/ 3 ¼" Baseboard and 2 ¼" Casings on all Doors & Windows
- Kneewall on Stairs

LIGHTING

- Embark Generation Lighting Package Brushed Nickel
- Kitchen Lighting w/ Traverse Mirage Fixtures
- Great Room & Primary Bedroom include a Brushed Nickel Designer Ceiling Fan w/ Light Kit
 - Linden 52" Traditional Ceiling Fan - 5LD52BSD

EXTERIOR

- 6-Panel Front Door w/ Smart Keypad Deadbolt
- Front Door Painted: Foggy Day SW6235
- Moire Black Dimensional Shingles
- Deep Granite Vinyl Body Siding
- Quiet Willow Board & Batten Accent
- White Exterior Trim
- 4 over 1 White Windows
- White Gallery Steel Short Panel Garage Door
- White Gutters on Front of Home