

Brookstone Village

HOMESITE 11

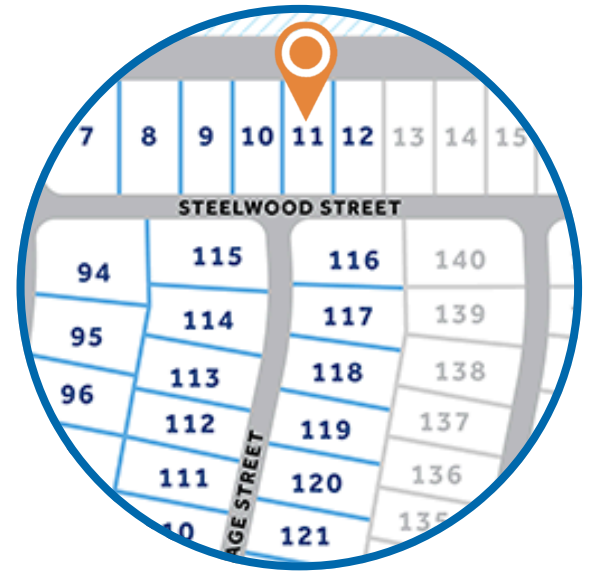
240 Steelwood Street
Raeford, NC

THE CAMELLIA HOMEPLAN

ELEVATION A

2,358 SQFT | 4 BR | 2.5 BA | 2 CAR GARAGE

\$359,900



.172 ACRE

*Artistic Rendering not lot specific.
For representation purposes only.

Find your place to call home in Brookstone Village! This gated community is in a prime location just off HWY 401 in the Raeford area, minutes from every resource and activity! Just around the corner, you will find First Health Moore Regional Hospital and First Health Convenient Care. Find fitness opportunities at Fit4Life Health Club and CrossFit Raeford. Try indoor Skydiving at Paraclete XP, let the kids jump and explore at JP's Jump Masters indoor trampoline park, or get the family together at the local Round-A-Bout Skating Center! You are also just down the road from multiple grocery stores, shopping centers, and restaurants.

NEW HOME SPECIALISTS

910.405.8311

info@cavinessandcates.com



Photos, Options,
Virtual Tours & More



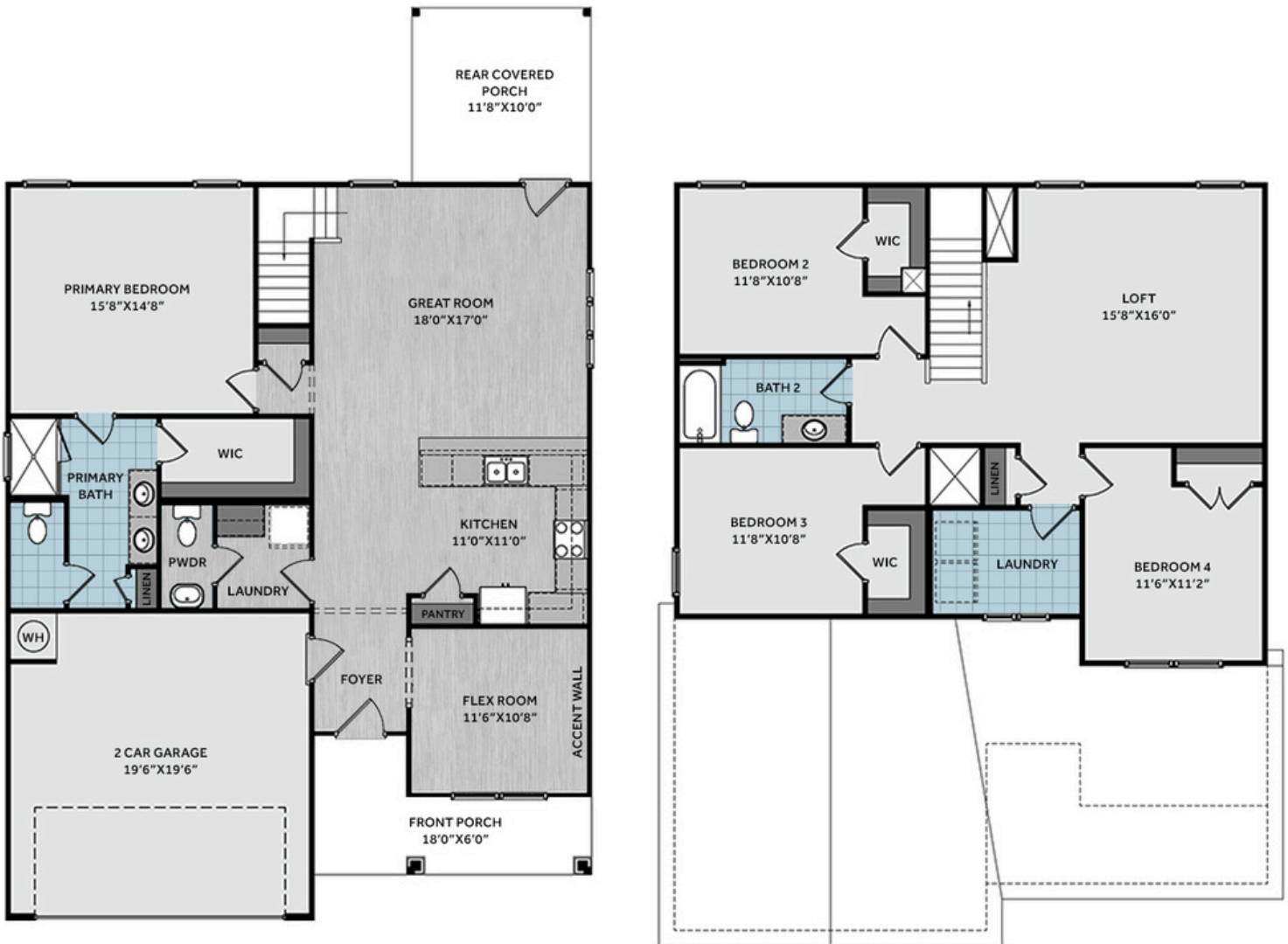
WWW.CATESBUILDING.COM



WWW.CAVINESSANDCATES.COM



Sales and Marketing by

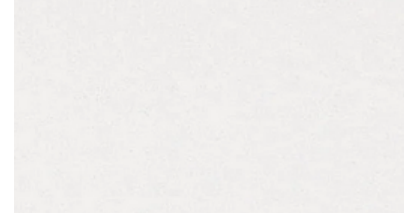
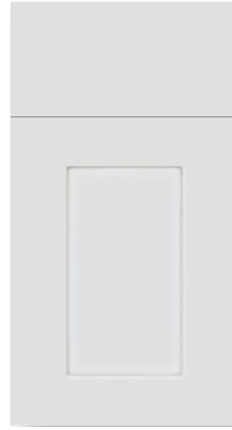


Upon entering the home, you'll find a flex room just off the foyer with a square panel accent wall painted in SW "Iron Ore", with the garage entry located directly across from it. The entryway also leads to a mudroom with a stacked washer/dryer, a base cabinet, and access to a half-bath. The kitchen offers ample countertop space with granite countertops in "New Caledonia," a sink overlooking the great room, bar seating, white shaker cabinets, pantry, and stainless-steel appliances, including a microwave, dishwasher, and smooth top range. The open great room provides easy access to the rear-covered porch. Off the great room, the spacious first-floor primary suite is a peaceful retreat and features an en-suite bathroom with a dual quartz sink vanity, a walk-in shower, a private water closet, a linen closet, and a spacious walk-in closet. Upstairs offers a spacious loft with a linen closet, three bedrooms, a second laundry room, and a full bathroom. The exterior features low-maintenance vinyl siding with shake accents, dimensional roof shingles, and a spacious front porch with a front door painted in SW "Poinsettia" and smart keypad entry. Other highlights include a two-car garage, fiber optic internet availability, Energy Plus certification, and a 1-2-10 builder in-house warranty.

KITCHEN



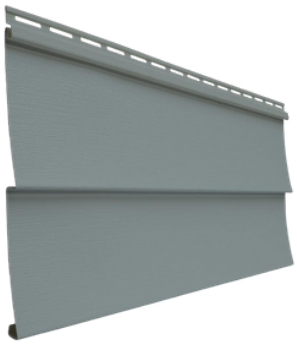
BATHROOM



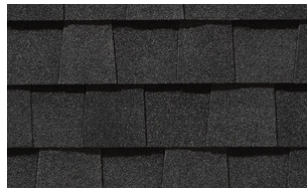
FLOORING



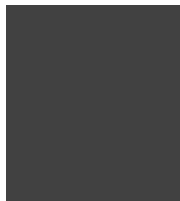
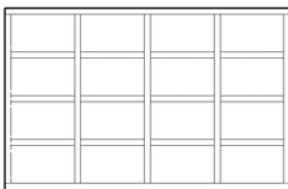
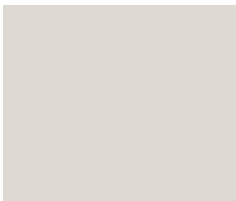
EXTERIOR



LIGHTING



PAINT



APPLIANCES



KITCHEN

- Moen Method One-Handle Pullout Kitchen Faucet in a Spot Resist™ Stainless Finish
- Standard Stainless Steel 50/50 Double Bowl Sink
- NexGen Shaker White Flat Panel Cabinets w/ BP20576195 Brushed Nickel Pulls
- Soft Close Hinges on Cabinet Doors
- 1/2 Bullnose New Caledonia Granite Countertops w/ 4" Splash
- Frigidaire Electric Stainless Steel Appliances
 - 30" Electric Range with EvenTemp™ - FCRE3062AS
 - 1.8 Cu. Ft. Over-The-Range Microwave - FMOS1846BS
 - 24" Built-In Tall Tub Dishwasher - FDPC4314AS

BATHROOM

- Moen Chateau Chrome Plumbing Package (Whole House)
- Arctic White Quartz Countertops w/ Square Bowls
- NexGen Shaker White Flat Panel Cabinets w/ BP20576195 Brushed Nickel Pulls
- Soft Close Hinges on Cabinet Doors
- Adult Height Cabinets in Primary Bath & Bath #2
- Gerber Maxwell Petit Pedestal Sink in Powder Room
- Raised/Elongated ADA Gerber Maxwell Toilet in Primary Bath & Gerber Maxwell Round Bowl Toilet in Powder Room, Bath #2

FLOORING

- Shaw Optimum Plus - Lighthouse #5091 LVP in Foyer, Great Room, Flex Room, Kitchen / Dining Area, Powder Room, Downstairs Laundry
- Shaw Origins - Prime #5146 Vinyl in Primary Bath, Bath #2, Upstairs Laundry
- Shaw Graceful Finesse Ecru Carpeting in Primary Bedroom/WIC, Bedroom #2, Bedroom #3, Bedroom #4, Loft, Stairs

INTERIOR PAINT & TRIM

- Sherwin Williams Flat Primary Interior Color: City Loft SW7631 w/ White Ceilings
- Embark Trim Package w/ 3 ¼" Baseboard and 2 ¼" Casings on all Doors
- Kneewall on Stairs
- Accent Wall Option #1 - Square Panel Accent Wall: Satin Painted Iron Ore SW7069 - Flex Room

LIGHTING

- Embark Generation Lighting Package Brushed Nickel
- Kitchen Lighting w/ Traverse Mirage Fixtures
- Great Room & Primary Bedroom include a Brushed Nickel Designer Ceiling Fan w/ Light Kit
 - Linden 52" Traditional Ceiling Fan - 5LD52BSD

EXTERIOR

- Painted Craftsman 3-Light Glass View over 3-Panel Front Door w/ Smart Keypad Deadbolt
- Front Door Painted: Poinsettia SW6594
- Moire Black Dimensional Shingles
- 8" PVC Square Front Columns
- English Wedgewood Vinyl Body Siding
- Desert Sand Shake Accent
- White Exterior Trim
- Clay Board & Batten Shutters
- 4 over 1 White Windows
- White Bridgeport Steel Extended Panel Garage Door
- White Gutters on Front of Home