

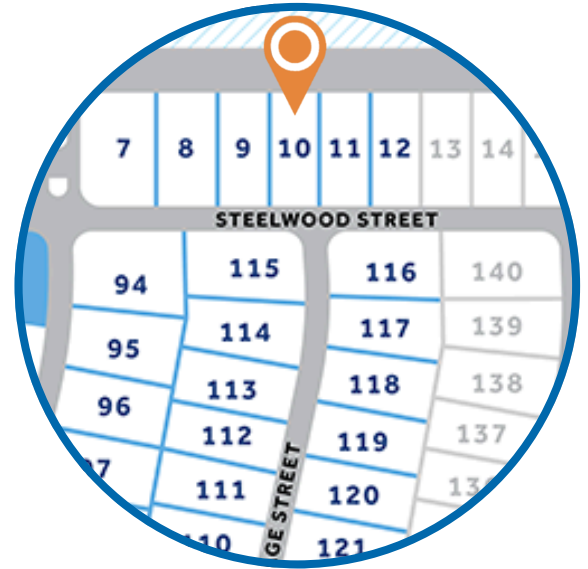
Brookstone Village

HOMESITE 10
256 Steelwood Street
Raeford, NC

THE ABERDEEN HOMEPLAN

ELEVATION F
2,234 SQFT | 3 BR | 2.5 BA | 2 CAR GARAGE

\$341,900



.172 ACRE

*Artistic Rendering not lot specific.
For representation purposes only.

Find your place to call home in Brookstone Village! This gated community is in a prime location just off HWY 401 in the Raeford area, minutes from every resource and activity! Just around the corner, you will find First Health Moore Regional Hospital and First Health Convenient Care. Find fitness opportunities at Fit4Life Health Club and CrossFit Raeford. Try indoor Skydiving at Paraclete XP, let the kids jump and explore at JP's Jump Masters indoor trampoline park, or get the family together at the local Round-A-Bout Skating Center! You are also just down the road from multiple grocery stores, shopping centers, and restaurants.

NEW HOME SPECIALISTS

910.405.8311

info@cavinessandcates.com



Photos, Options,
Virtual Tours & More



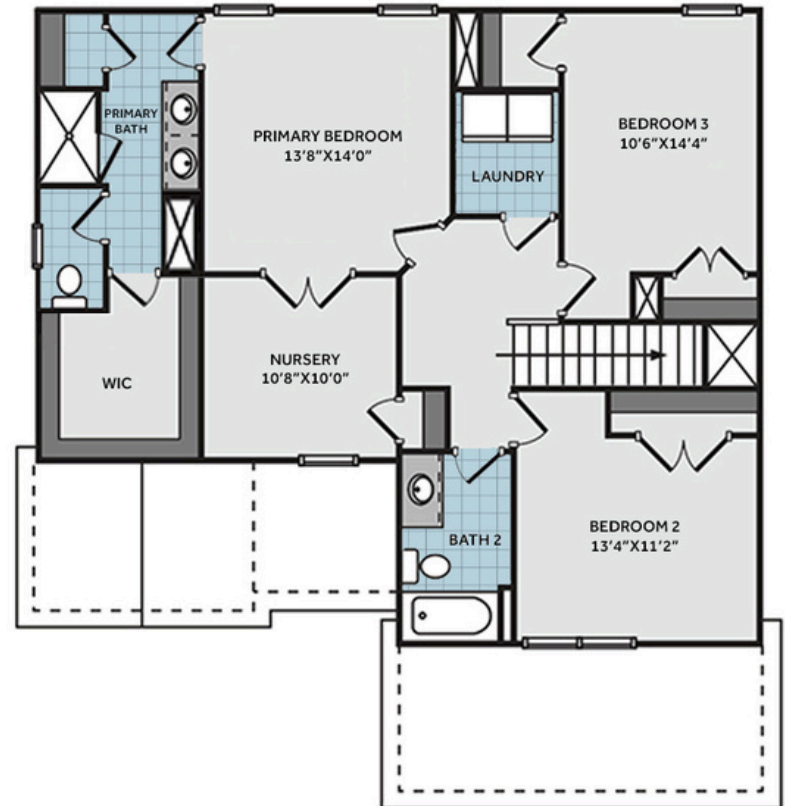
WWW.CATESBUILDING.COM



WWW.CAVINESSANDCATES.COM

Sales and Marketing by

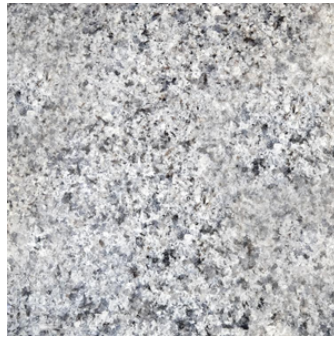
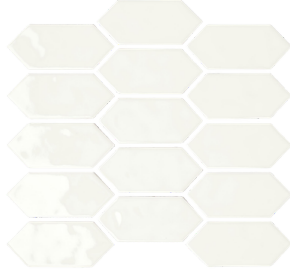




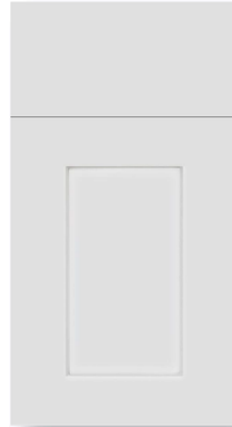
This home features a spacious great room that flows seamlessly into the eat-in kitchen for a warm, open layout. Off the foyer, a flexible home office with a walk-in closet can serve as a bedroom, while a nearby half bath adds convenience. The kitchen includes an island, "Azul Platino" granite countertops, white shaker cabinets, horizontal picket ceramic tile backsplash, a corner pantry, a dining area with rear porch access, and stainless-steel appliances including a microwave, dishwasher, and smooth top range. The private primary suite showcases French door access to an adjoining nursery, and an en-suite bath featuring a dual quartz sink vanity, walk-in shower, private water closet, linen closet, and walk-in closet. Upstairs, two additional bedrooms share hall access to a laundry room and a full bathroom with a vanity and tub/shower combo. LVP flooring runs throughout the first-floor main living areas. Exterior highlights include low-maintenance vinyl siding with board and batten accents, dimensional roof shingles, and a front door painted in SW "Cyberspace" with smart keypad entry. This Energy Plus certified home includes a two-car garage, fiber optic internet availability, and is backed by a 1-2-10-year builder in-house warranty.

KITCHEN

Designer Option Added

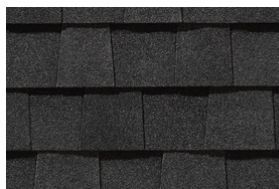
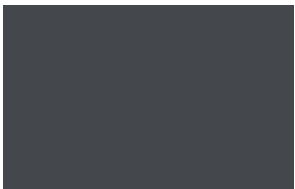
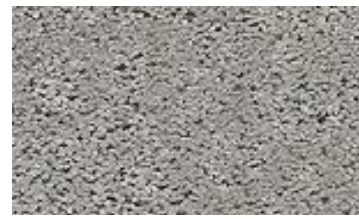
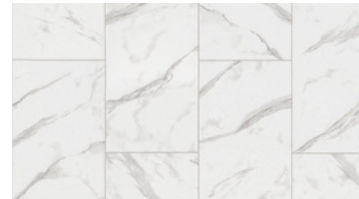


BATHROOM



FLOORING

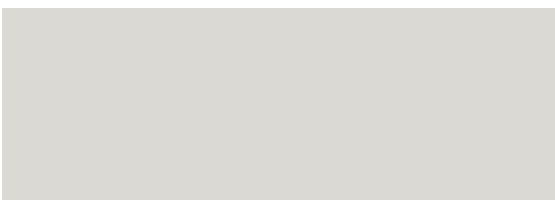
EXTERIOR



LIGHTING



PAINT



APPLIANCES



KITCHEN

- Moen Method One-Handle Pullout Kitchen Faucet in a Spot Resist™ Stainless Finish
- Standard Stainless Steel 50/50 Double Bowl Sink
- NexGen Shaker White Flat Panel Cabinets w/ BP20576195 Brushed Nickel Pulls
- Soft Close Hinges on Cabinet Doors
- 1/2 Bullnose Azul Platino Granite Countertops
- 2x5 Horizontal Pickets - Mythology / MY90 2x5 Pickets w/ #44 Bright White Grout - Kitchen Backsplash
- Frigidaire Electric Stainless Steel Appliances
 - 30" Electric Range with EvenTemp™ - FCRE3062AS
 - 1.8 Cu. Ft. Over-The-Range Microwave - FMOS1846BS
 - 24" Built-In Tall Tub Dishwasher - FDPC4314AS

BATHROOM

- Moen Chateau Chrome Plumbing Package (Whole House)
- Frost White Quartz Countertops w/ Square Bowls
- NexGen Shaker White Flat Panel Cabinets w/ BP20576195 Brushed Nickel Pulls
- Soft Close Hinges on Cabinet Doors
- Adult Height Cabinets in Primary Bath & Bath #2
- Gerber Maxwell Petit Pedestal Sink in Powder Room
- Raised/Elongated ADA Gerber Maxwell Toilet in Primary Bath & Gerber Maxwell Round Bowl Toilet in Powder Room, Bath #2

FLOORING

- Shaw Optimum Plus - Driftwood #1056 LVP in Foyer, Great Room, Kitchen / Dining Area, Powder Room
- Shaw Streamline - Carrara White #1182 Vinyl in Primary Bath, Bath #2, Laundry
- Shaw Graceful Finesse Concrete Carpeting in Office, Stairs, Primary Bedroom/WIC/Nursery, Hall, Bedroom #2, Bedroom #3

INTERIOR PAINT & TRIM

- Sherwin Williams Flat Primary Interior Color: First Star SW7646 w/ White Ceilings
- Embark Trim Package w/ 3 ¼" Baseboard and 2 ¼" Casings on all Doors
- Kneewall on Stairs

LIGHTING

- Embark Generation Lighting Package Brushed Nickel
- Kitchen Lighting w/ Traverse Mirage Fixtures
- Great Room & Primary Bedroom include a Brushed Nickel Designer Ceiling Fan w/ Light Kit
 - Linden 52" Traditional Ceiling Fan - 5LD52BSD

EXTERIOR

- Painted Craftsman 3-Light Glass View over 3-Panel Front Door w/ Smart Keypad Deadbolt
- Front Door Painted: Cyberspace SW7076
- Moire Black Dimensional Shingles
- Silver Gray Vinyl Body Siding
- Brunswick Board & Batten Accent
- White Exterior Trim
- 4 over 1 White Windows
- White Gallery Steel Short Panel Garage Door
- White Gutters on Front of Home