

# Blakefield

**HOMESITE 299**

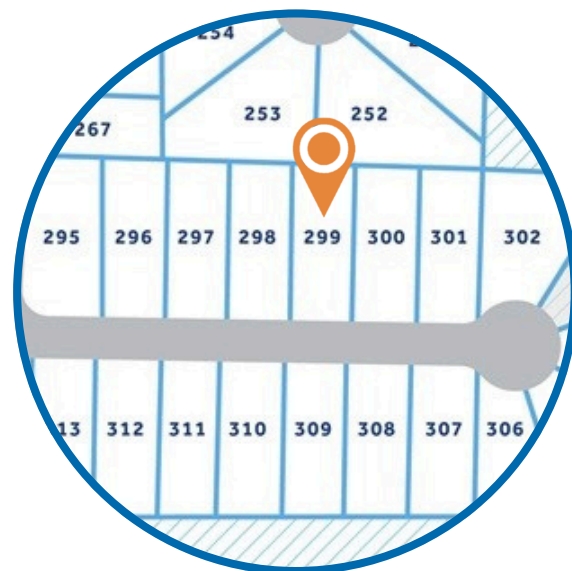
4275 Halkirk Drive  
Fayetteville, NC

## THE AVERY HOMEPLAN

ELEVATION F

1,866 SQFT | 4 BR | 2 BA | 2 CAR GARAGE

**\$324,900**



.27 ACRE

Nestled near Eastover and Fayetteville, Blakefield features spacious homesites in a scenic, rural setting while keeping you close to everything you need.

Enjoy easy access to shopping, dining, and entertainment, including Baywood Golf & Country Club, Cape Fear Botanical Garden, and beautiful natural parks. With downtown Fayetteville minutes away, Ft. Bragg less than 20 miles away, and schools just minutes from your doorstep, Blakefield offers the perfect location for growing families to call home.

**NEW HOME SPECIALISTS**

910.405.8311

info@cavinessandcates.com

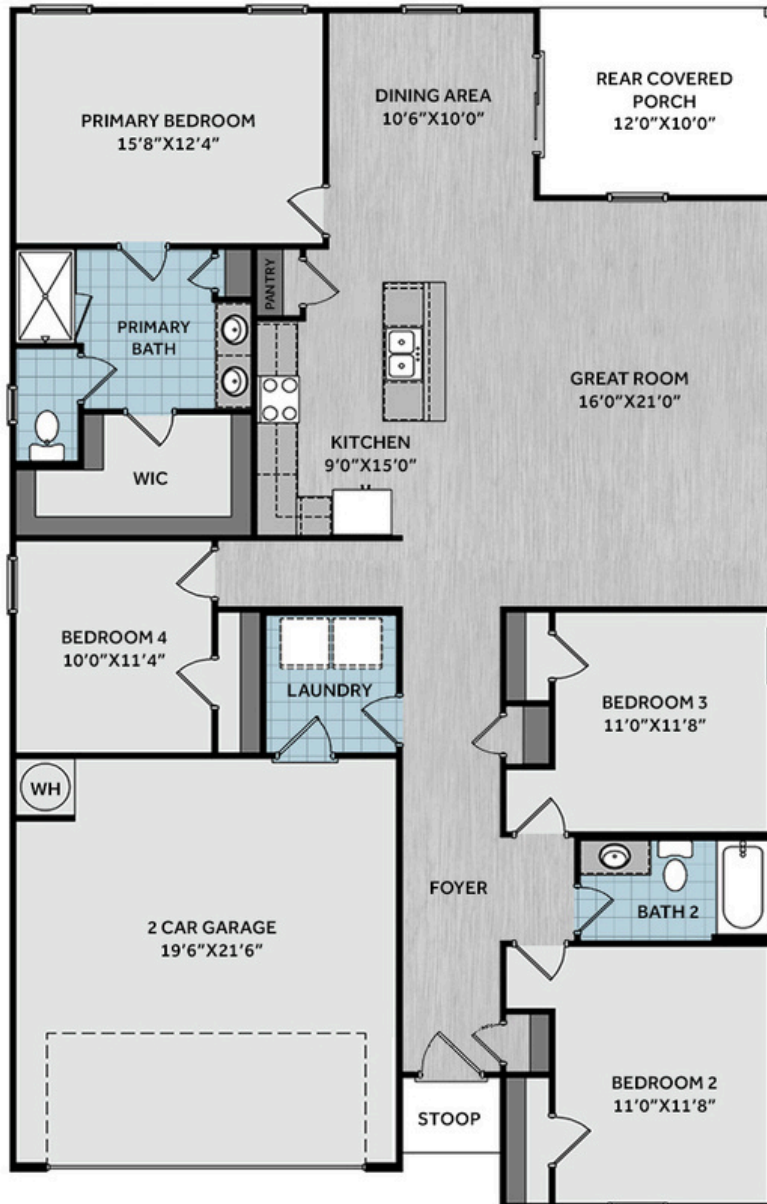


Photos, Options,  
Virtual Tours & More

SALES AND MARKETING BY:

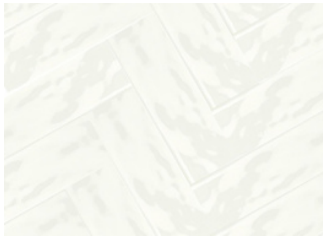


Builder's Marketing Group  
WWW.CAVINESSANDCATES.COM



The welcoming foyer opens to two bedrooms and a full hall bath with a vanity and tub/shower combo, ideal for family or guests. A convenient mudroom with washer/dryer connections offers direct access to the garage for everyday ease. The home opens into a spacious great room that flows into the kitchen, which features a center island with a sink, "New Caledonia" granite countertops, white shaker cabinets, herringbone tile backsplash, pantry, and stainless-steel appliances including a microwave, dishwasher, and smooth-top range. The adjacent dining area opens through sliding glass doors to the rear covered porch, perfect for relaxing or entertaining. Just off the kitchen, the private primary suite provides a peaceful retreat with an ensuite bathroom containing a dual quartz sink vanity, walk-in shower, private water closet, linen closet, and a spacious walk-in closet. Exterior details include low-maintenance vinyl siding with board and batten accents, dimensional roof shingles, and a front door painted in SW "Retreat" with smart keypad entry. Additional highlights include a two-car garage, fiber optic internet availability, Energy Plus Certification, and a 1-2-10-year builder in-house warranty.

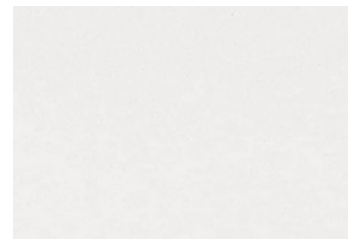
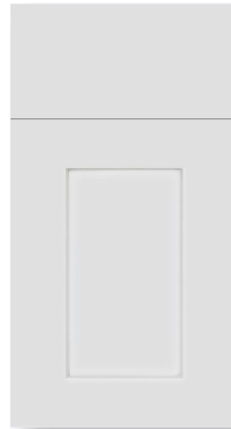
## KITCHEN



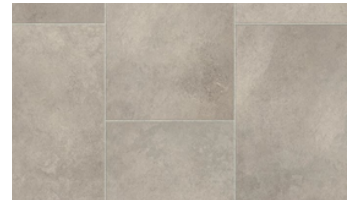
*\*Designer Option Added\**



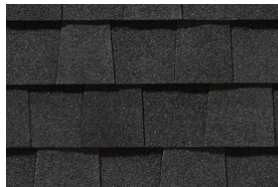
## BATHROOM



## FLOORING



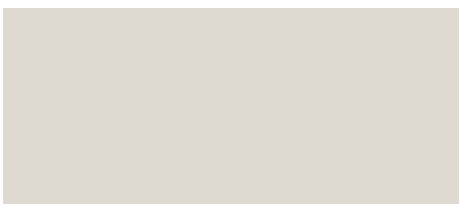
## EXTERIOR



## LIGHTING



## PAINT



## APPLIANCES







# THE AVERY HOMEPLAN

LOT 299 | ELEVATION F  
1,866 SQFT | 4 BR | 2 BA | 2 CAR GARAGE

## KITCHEN

- Moen Method One-Handle Pullout Kitchen Faucet in a Spot Resist™ Stainless Finish
- Standard Stainless Steel 50/50 Double Bowl Sink
- NexGen Shaker White Flat Panel Cabinets w/ BP20576195 Brushed Nickel Pulls
- Soft Close Hinges on Cabinet Doors
- 1/2 Bullnose New Caledonia Granite Countertops
- 4x12 Herringbone Rectangle Undulated - Mythology / MY90 4x12 w/ #44 Bright White Grout - Set in Herringbone Pattern Kitchen Backsplash
- Frigidaire Electric Stainless Steel Appliances
  - 30" Electric Range with EvenTemp™ - FCRE3062AS
  - 1.8 Cu. Ft. Over-The-Range Microwave - FMOS1846BS
  - 24" Built-In Tall Tub Dishwasher - FDPC4314AS

## BATHROOM

- Moen Chateau Chrome Plumbing Package (Whole House)
- Arctic White Quartz Countertops w/ Square Bowls
- NexGen Shaker White Flat Panel Cabinets w/ BP20576195 Brushed Nickel Pulls
- Soft Close Hinges on Cabinet Doors
- Adult Height Cabinets in Primary Bath & Bath #2
- Raised/Elongated ADA Gerber Maxwell Toilet in Primary Bath & Gerber Maxwell Round Bowl Toilet in Bath #2

## FLOORING

- Shaw Optimum Plus - Lighthouse #5091 LVP in Foyer, Great Room, Kitchen / Dining Area
- Shaw Origins- Prime #5146 Vinyl in Primary Bath, Bath #2, Laundry
- Shaw Graceful Finesse Ecru Carpeting in Primary Bedroom/WIC, Bedroom #2, Bedroom #3, Bedroom #4

## INTERIOR PAINT & TRIM

- Sherwin Williams Flat Primary Interior Color: City Loft SW7631 w/ White Ceilings
- Embark Trim Package w/ 3 ¼" Baseboard and 2 ¼" Casings on all Doors

## LIGHTING

- Embark Generation Lighting Package Brushed Nickel
- Kitchen Lighting w/ Traverse Mirage Fixtures
- Great Room & Primary Bedroom include a Brushed Nickel Designer Ceiling Fan w/ Light Kit
  - Linden 52" Traditional Ceiling Fan - 5LD52BSD

## EXTERIOR

- 6-Panel Front Door w/ Smart Keypad Deadbolt
- Front Door Painted: Retreat SW6207
- Moire Black Dimensional Shingles
- Sage Vinyl Body Siding
- Quiet Willow Board & Batten Accent
- White Exterior Trim
- 4 over 1 White Windows
- White Bridgeport Steel Extended Panel Garage Door
- White Gutters on Front of Home

Disclaimer: In an effort to continuously improve and develop our products, Caviness & Cates reserves the right to change products, features, pricing, and specifications without prior notice. Features may vary between homes built within the same community. Please see actual home purchase & sale agreement for additional information, disclosures, and disclaimers. Plans are artistic renderings and may not reflect final product. All information on square footage, acreage, and dimensions should be considered approximate. Consult with New Homes Sales Specialist before writing an offer.

