

EF ELLIOT FARMS

HOMESITE 93

5414 Tall Timbers Drive
Fayetteville, NC

THE TRYON HOMEPLAN

ELEVATION A

1,644 SQFT | 3 BR | 2.5 BA | 1 CAR GARAGE



\$309,900



.36 ACRE

Elliot Farms is a peaceful community conveniently located near multiple metro areas! Situated on the Northside of Fayetteville, Elliot Farms is less than 15 minutes from Fort Bragg gates. Enjoy nearby local attractions like ZipQuest Waterfall & Treetop Adventures and Peaden's Seafood Restaurant. Downtown Fayetteville is just a 20 minutes drive and offers local shopping, restaurants, and attractions like the Fayetteville Woodpeckers Baseball at Segra Stadium, the Special Operations Museum, and the Cape Fear Botanical Garden. Drive North and you can visit downtown Lillington, Raven Rock State Park, and Campbell University in around 25 minutes. This community is just over an hour from the city of Raleigh and the RDU International airport.

NEW HOME SPECIALISTS

910.405.8311

info@cavinessandcates.com



Photos, Options,
Virtual Tours & More



WWW.CATESBUILDING.COM

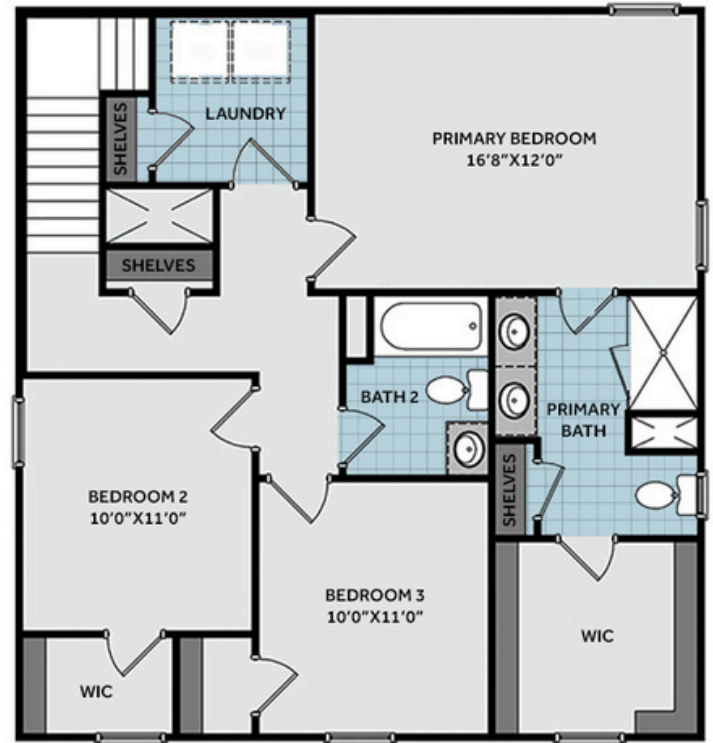
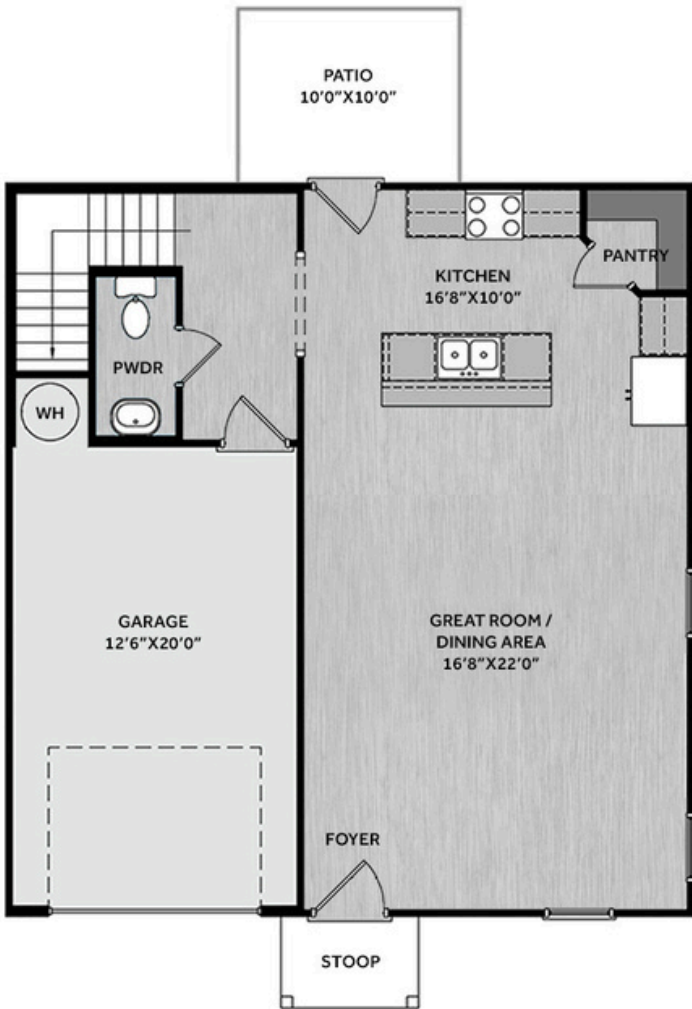


WWW.CAVINESSANDCATES.COM

*Subject to change without notice. See pg. 4 for full disclaimer.

Sales and Marketing by



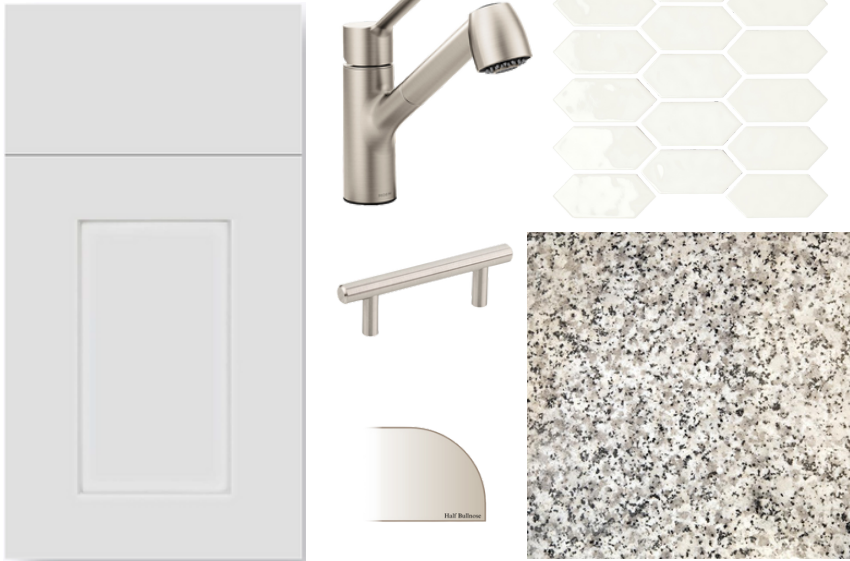


Step into an open and inviting great room that flows seamlessly into the dining area and kitchen—ideal for gatherings. The kitchen offers "Luna Pearl" granite countertops, white shaker cabinets, a corner pantry, and a center island with a sink, plus stainless-steel appliances including a microwave, dishwasher, and smooth-top range. From the kitchen, enjoy easy access to the rear grill patio, with a nearby half bath completing the first floor. Upstairs, all bedrooms are tucked away for privacy. The spacious primary suite features an ensuite bathroom with a dual quartz sink vanity, walk-in shower, linen closet, and large walk-in closet. Two additional bedrooms share a full hall bath with a vanity and tub/shower combo. A centrally located laundry room with washer/dryer connections and a nearby linen closet adds everyday convenience.

Exterior highlights include low-maintenance vinyl siding with shake accents, dimensional roof shingles, and a front door painted in SW "Foggy Day" with smart keypad entry. Single-car garage, Energy Plus certification, fiber optic internet availability, and a 1-2-10 builder warranty complete this home.

KITCHEN

Designer Option Added



BATHROOM



FLOORING

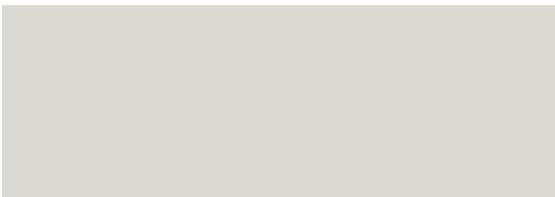
EXTERIOR



LIGHTING



PAINT



APPLIANCES





THE TRYON HOMEPLAN

LOT 93 | ELEVATION A
1,644 SQFT | 3 BR | 2.5 BA | 1 CAR GARAGE

KITCHEN

- Moen Method One-Handle Pullout Kitchen Faucet in a Spot Resist™ Stainless Finish
- Standard Stainless Steel 50/50 Double Bowl Sink
- NexGen Shaker White Flat Panel Cabinets w/ BP20576195 Brushed Nickel Pulls
- Soft Close Hinges on Cabinet Doors
- 1/2 Bullnose Luna Pearl Granite Countertops
- 2x5 Horizontal Pickets - Mythology / MY90 2x5 Pickets w/ #44 Bright White Grout - Kitchen Backsplash
- Frigidaire Electric Stainless Steel Appliances
 - 30" Electric Range with EvenTemp™ - FCRE3062AS
 - 1.8 Cu. Ft. Over-The-Range Microwave - FMOS1846BS
 - 24" Built-In Tall Tub Dishwasher - FDPC4314AS

BATHROOM

- Moen Chateau Chrome Plumbing Package (Whole House)
- Arctic White Quartz Countertops w/ Square Bowls
- NexGen Shaker White Flat Panel Cabinets w/ BP20576195 Brushed Nickel Pulls
- Soft Close Hinges on Cabinet Doors
- Adult Height Cabinets in Primary Bath & Bath #2
- Raised/Elongated ADA Gerber Maxwell Toilet in Primary Bath & Gerber Maxwell Round Bowl Toilet in Powder Room, Bath #2
- Gerber Maxwell Petit Pedestal Sink in Powder Room

FLOORING

- Shaw Optimum Plus - Oyster Oak #591 LVP in Foyer, Great Room, Kitchen / Dining Area, Powder Room
- Shaw Streamline - Carrara White #1182 Vinyl in Primary Bath, Bath #2, Laundry
- Shaw Graceful Finesse Concrete Carpeting in Primary Bedroom/WIC, Bedroom #2, Bedroom #3, Stairs

INTERIOR PAINT & TRIM

- Sherwin Williams Flat Primary Interior Color: First Star SW7646 w/ White Ceilings
- Embark Trim Package w/ 3 ¼" Baseboard and 2 ¼" Casings on all Doors

LIGHTING

- Embark Generation Lighting Package Brushed Nickel
- Kitchen Lighting w/ Traverse Mirage Fixtures
- Great Room & Primary Bedroom include a Brushed Nickel Designer Ceiling Fan w/ Light Kit
 - Linden 52" Traditional Ceiling Fan - 5LD52BSD

EXTERIOR

- 6-Panel Front Door w/ Smart Keypad Deadbolt
- Front Door Painted: Foggy Day SW6235
- Moire Black Dimensional Shingles
- Deep Granite Vinyl Body Siding
- Quiet Willow Shake Accent
- White Exterior Trim
- 6 over 6 White Windows
- Storm Cloud Raised Panel Shutters
- Bridgeport Steel Narrow Panel Garage Door
- White Gutters on Front of Home

Disclaimer: In an effort to continuously improve and develop our products, Caviness & Cates reserves the right to change products, features, pricing, and specifications without prior notice. Features may vary between homes built within the same community. Please see actual home purchase & sale agreement for additional information, disclosures, and disclaimers. Plans are artistic renderings and may not reflect final product. All information on square footage, acreage, and dimensions should be considered approximate. Consult with New Homes Sales Specialist before writing an offer.

