

Brookstone Village

HOMESITE 9

266 Steelwood Street
Raeford, NC

THE GRAHAM HOMEPLAN

ELEVATION F

2,058 SQFT | 3 BR | 2.5 BA | 2 CAR GARAGE
W/ DELUXE PANTRY

\$329,900



.17 ACRE

Find your place to call home in Brookstone Village! This gated community is in a prime location just off HWY 401 in the Raeford area, minutes from every resource and activity! Just around the corner, you will find First Health Moore Regional Hospital and First Health Convenient Care. Find fitness opportunities at Fit4Life Health Club and CrossFit Raeford. Try indoor Skydiving at Paraclete XP, let the kids jump and explore at JP's Jump Masters indoor trampoline park, or get the family together at the local Round-A-Bout Skating Center! You are also just down the road from multiple grocery stores, shopping centers, and restaurants.

NEW HOME SPECIALISTS

910.405.8311

info@cavinessandcates.com



Photos, Options,
Virtual Tours & More



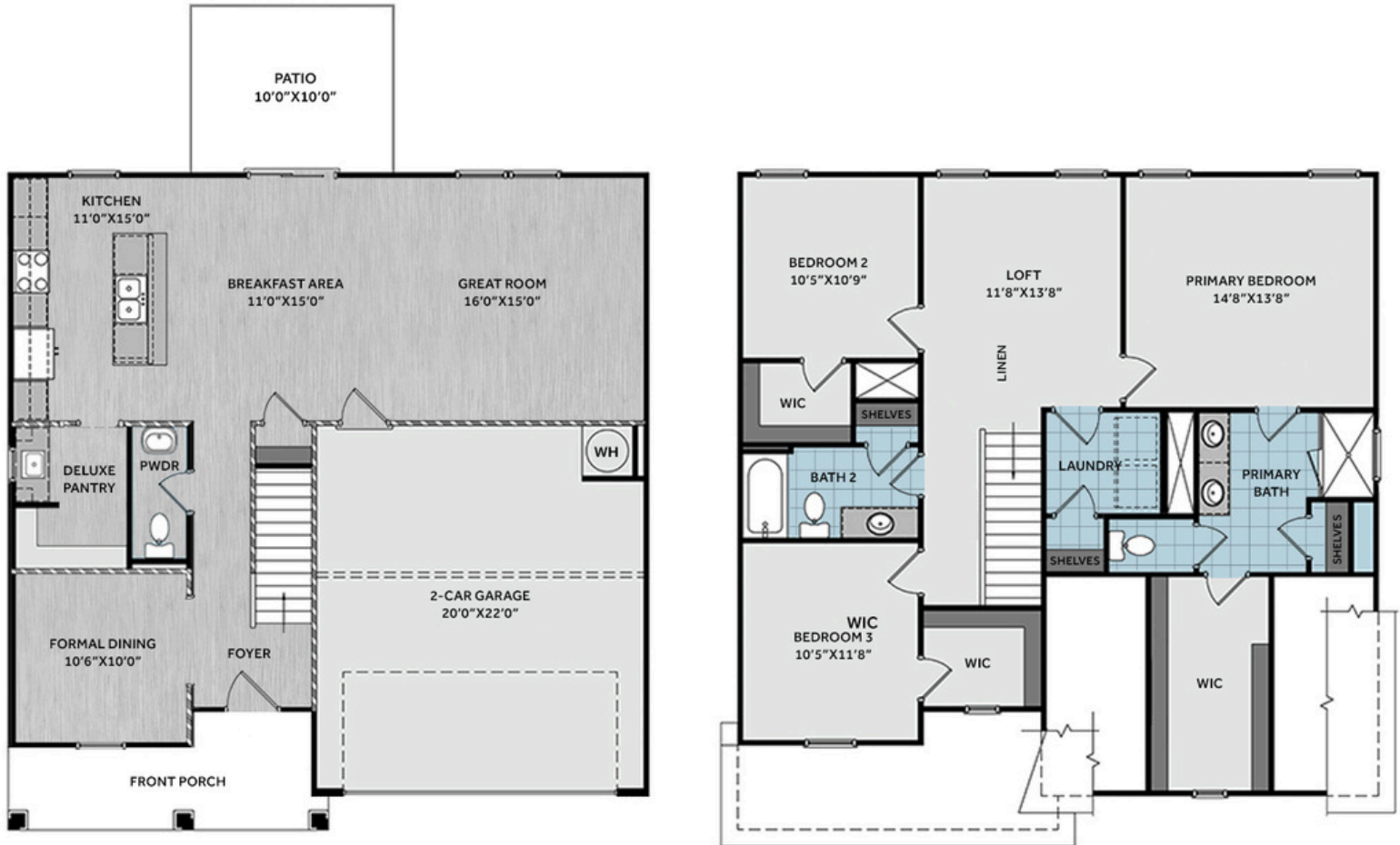
WWW.CATESBUILDING.COM



WWW.CAVINESSANDCATES.COM



Sales and Marketing by



Just off the foyer is a dining room and a convenient half-bath. The kitchen, breakfast area, and spacious great room flow seamlessly together and open to a rear grill patio, perfect for indoor-outdoor entertaining. The kitchen features a large eat-in island, white shaker cabinets, "Giallo Ornamental" granite countertops, a deluxe pantry with a prep sink, and stainless-steel appliances, including a smooth top range, microwave, and dishwasher. Upstairs, a spacious loft adds versatile living space and sits near a laundry room and linen closet for added convenience. The primary suite serves as a private retreat, complete with a spa-like en-suite bathroom with a dual quartz sink vanity, walk-in shower, linen closet, private water closet, and a large walk-in closet with natural light. Two additional bedrooms—each with walk-in closets—share a full hall bathroom with a vanity, tub/shower combo, and linen closet. Exterior features include a welcoming front porch, low-maintenance vinyl siding with board and batten accents, dimensional roof shingles, and a smart keypad entry. Additional highlights: 2-car garage, Energy Plus certification, Fiber Optic internet availability, and a 1-2-10 builder in-house warranty.

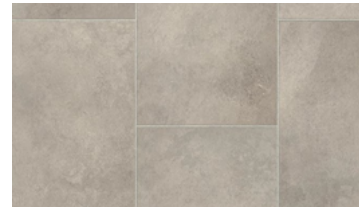
KITCHEN



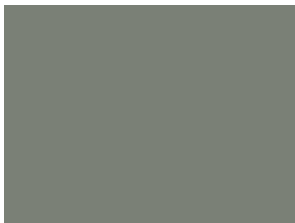
BATHROOM



FLOORING



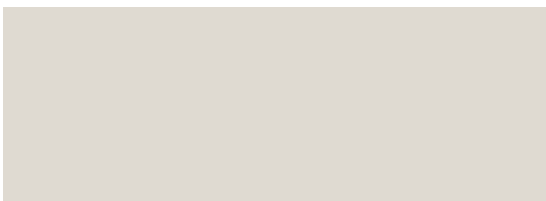
EXTERIOR



LIGHTING



PAINT



APPLIANCES



KITCHEN

- Moen Method One-Handle Pullout Kitchen Faucet in a Spot Resist™ Stainless Finish
- Standard Stainless Steel 50/50 Double Bowl Sink
- NexGen Shaker White Flat Panel Cabinets w/ BP20576195 Brushed Nickel Pulls
- Soft Close Hinges on Cabinet Doors
- 1/2 Bullnose Giallo Ornamental Granite Countertops w/ 4" Splash
- Frigidaire Electric Stainless Steel Appliances
 - 30" Electric Range with EvenTemp™ - FCRE3062AS
 - 1.8 Cu. Ft. Over-The-Range Microwave - FMOS1846BS
 - 24" Built-In Tall Tub Dishwasher - FDPC4314AS

BATHROOM

- Moen Chateau Chrome Plumbing Package (Whole House)
- Frost White Quartz Countertops w/ Square Bowls
- NexGen Shaker White Flat Panel Cabinets w/ BP20576195 Brushed Nickel Pulls
- Soft Close Hinges on Cabinet Doors
- Adult Height Cabinets in Primary Bath & Bath #2
- Gerber Maxwell Petit Pedestal Sink in Powder Room
- Raised/Elongated ADA Gerber Maxwell Toilet in Primary Bath & Gerber Maxwell Round Bowl Toilet in Powder Room, Bath #2

FLOORING

- Shaw Optimum Plus - Wild Dunes #7089 LVP in Foyer, Great Room, Formal Dining Room, Kitchen / Breakfast Area, Powder Room, Deluxe Pantry
- Shaw Origins - Prime #5146 Vinyl in Primary Bath, Bath #2, Laundry
- Shaw Graceful Finesse Ecru Carpeting in Primary Bedroom/WIC, Bedroom #2, Bedroom #3, Loft, Stairs

INTERIOR PAINT & TRIM

- Sherwin Williams Flat Primary Interior Color: City Loft SW7631 w/ White Ceilings
- Embark Trim Package w/ 3 ¼" Baseboard and 2 ¼" Casings on all Doors
- Kneewall on Stairs

LIGHTING

- Embark Generation Lighting Package Brushed Nickel
- Kitchen Lighting w/ Traverse Mirage Fixtures
- Great Room & Primary Bedroom include a Brushed Nickel Designer Ceiling Fan w/ Light Kit
 - Linden 52" Traditional Ceiling Fan - 5LD52BSD

EXTERIOR

- 6-Panel Front Door w/ Smart Keypad Deadbolt
- Front Door Painted: Retreat SW6207
- Moire Black Dimensional Shingles
- Sage Vinyl Body Siding
- Quiet Willow Board & Batten Accent
- White Exterior Trim
- 4 over 1 White Windows
- White Gallery Steel Long Panel Garage Door
- White Gutters on Front of Home