

Brookstone Village

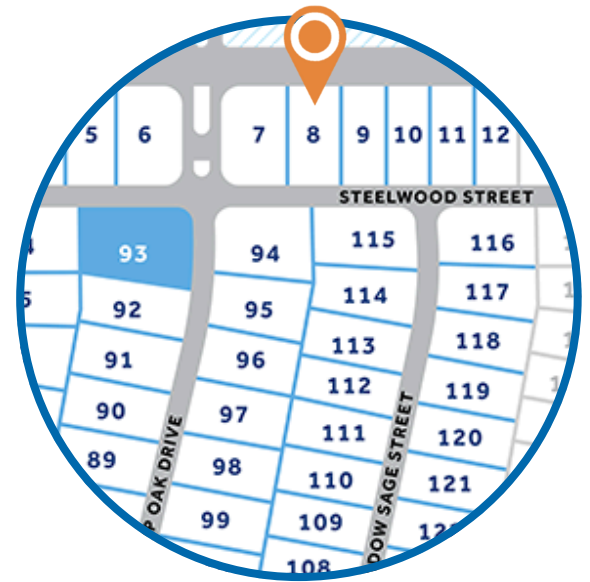
HOMESITE 8

278 Steelwood Street
Raeford, NC

THE CLAYTON HOMEPLAN

ELEVATION C

2,560 SQFT | 4 BR | 3.5 BA | 2 CAR GARAGE



.20 ACRE

Find your place to call home in Brookstone Village! This gated community is in a prime location just off HWY 401 in the Raeford area, minutes from every resource and activity! Just around the corner, you will find First Health Moore Regional Hospital and First Health Convenient Care. Find fitness opportunities at Fit4Life Health Club and CrossFit Raeford. Try indoor Skydiving at Paraclete XP, let the kids jump and explore at JP's Jump Masters indoor trampoline park, or get the family together at the local Round-A-Bout Skating Center! You are also just down the road from multiple grocery stores, shopping centers, and restaurants.

NEW HOME SPECIALISTS

910.405.8311

info@cavinessandcates.com



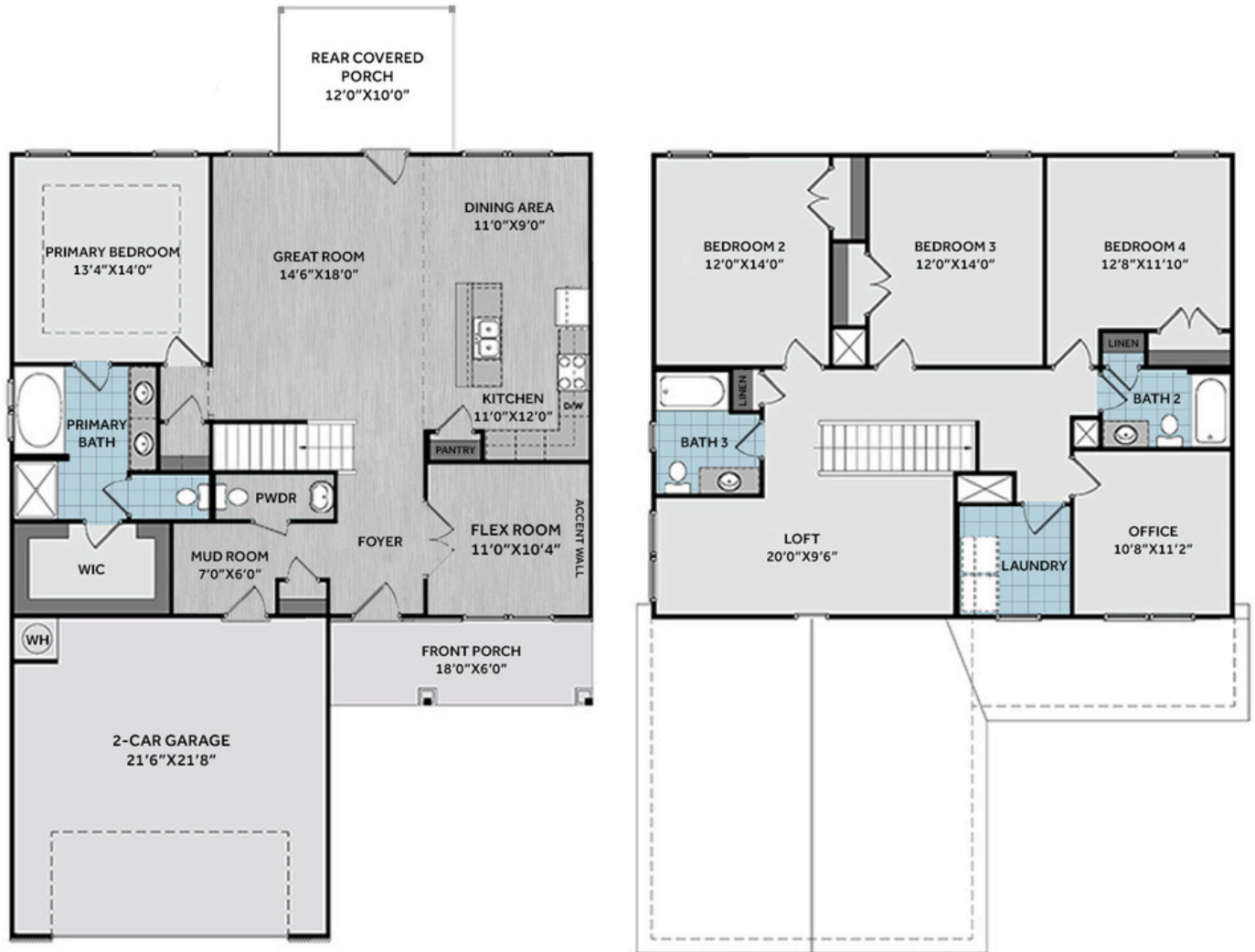
Photos, Options,
Virtual Tours & More



WWW.CATESBUILDING.COM



WWW.CAVINESSANDCATES.COM



The first-floor primary suite features a tray ceiling with crown molding, while the adjoining bathroom offers a dual quartz sink vanity, walk-in shower, garden tub, private water closet, and a walk-in closet. The spacious great room opens to the rear covered porch, creating effortless indoor-outdoor living. Off the foyer, a versatile flex room with French doors is highlighted by an accent wall painted in SW "Iron Ore." The mudroom at the garage entry includes a coat closet and access to a half bath. The kitchen opens to the great room and dining area and features an island with a sink, "Azul Platino" granite countertops, white cabinetry, a pantry, and stainless-steel appliances. Upstairs offers a loft with linen storage, a home office, three bedrooms, two full bathrooms, and a laundry room with washer/dryer connections. Exterior features include a spacious front porch, low-maintenance vinyl siding with shake accents, a stone skirt, and dimensional roof shingles. Additional highlights include a two-car garage, fiber-optic internet availability, Energy Plus certification, and a 1-2-10 builder in-house warranty.

KITCHEN



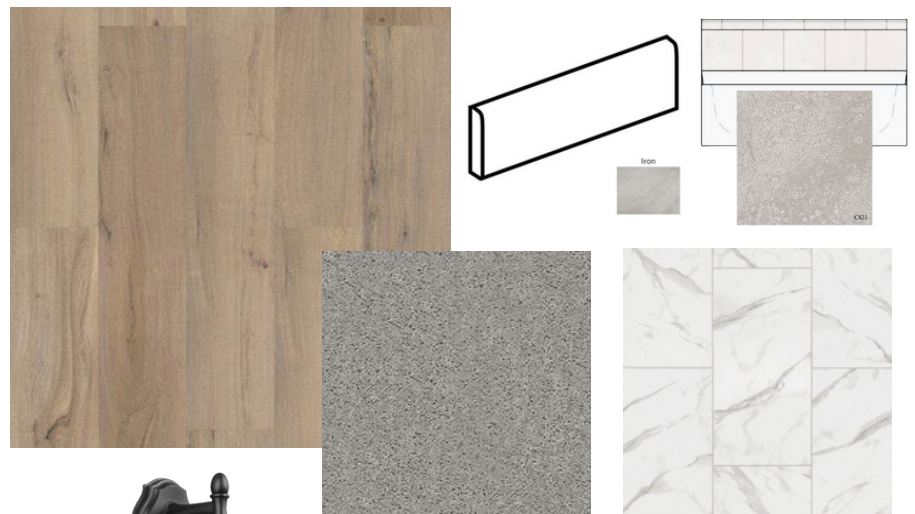
BATHROOM



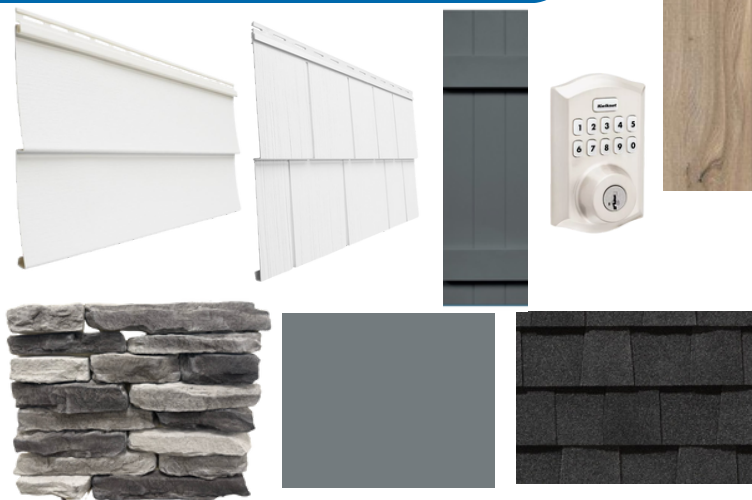
APPLIANCES



FLOORING



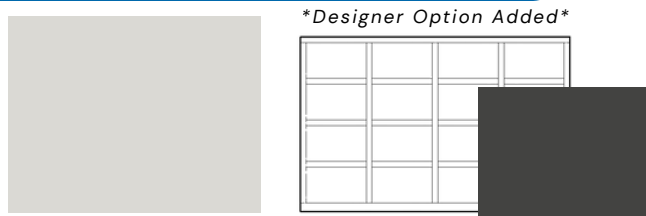
EXTERIOR



LIGHTING



PAINT



KITCHEN

- Brushed Nickel Brantford Kitchen Sink Fixture
- Standard Stainless Steel 50/50 Double Bowl Sink
- Fairmont White Flat Panel Cabinets w/ Brushed Nickel 6501195 Pulls
- 1/2 Bullnose Edge Azul Platino Granite Countertops w/ 4" Splash
- Standard Kitchen Layout
- Frigidaire Electric Stainless Steel Appliances
 - 30" Electric Range with EvenTemp™ - FCRE3062AS
 - 1.8 Cu. Ft. Over-The-Range Microwave - FMOS1846BS
 - 24" Built-In Tall Tub Dishwasher - FDPC4314AS

BATHROOM

- Brantford Chrome Plumbing Package (Whole House)
- Niagara Quartz Countertops w/ Oval Bowls
- Fairmont White Flat Panel Cabinets w/ Chrome BP9161196180 Pulls
- Raised/Elongated ADA Gerber Maxwell Toilet in Primary Bath & Gerber Maxwell Round Bowl Toilet in Powder Room, Bath #2, Bath #3
- Gerber Maxwell Pedestal Sink in Powder Room
- Garden Tub and Fiberglass Shower Layout
- CS23 w/ #89 Smoke Gray Grout Ceramic Tile Primary Shower Surround & CS23 12x12 w/ #89 Smoke Gray Grout Ceramic Tile Garden Tub Surround
- CS23 w/ #89 Smoke Gray Grout Ceramic Tile Surround in Bath #2, Bath #3

FLOORING

- Shaw Optimum Plus - Driftwood #1056 LVP in Foyer, Great Room, Flex Room, Kitchen / Dining Area, Powder Room, Hall #1
- Shaw Streamline - Carrara White #1182 Vinyl in Primary Bath, Bath #2, Bath #3, Laundry
- Shaw Graceful Finesse Concrete Carpeting

INTERIOR PAINT & TRIM

- Sherwin Williams Flat Primary Interior Color: First Star SW7646 w/ Matching Ceilings
- Base Trim Package w/ 4 ¼" Baseboard and 2 ¼" Casings
- Kneewall on Stairs
- Accent Wall Option #1: Painted Square Panel Iron Ore SW7069 - Flex Room
- Tray Ceiling in Primary Bedroom

LIGHTING

- Seville Brushed Nickel Lighting Package (Whole House)
- Great Room & Primary Bedroom include a Brushed Nickel Designer Ceiling Fan w/ Light Kit
 - Linden 52" Traditional Ceiling Fan - 5LD52BSD

EXTERIOR

- Paint Grade Smooth, 6-Panel Front Door w/ Smart Keypad Deadbolt Front Door
- Front Door Painted: Foggy Day SW6235
- Moire Black Dimensional Shingles
- Norris Gray Ledgestone Facade
- White Vinyl Body Siding
- White Vinyl Accent Shake
- White Exterior Trim
- 4 over 1 White Windows
- Storm Cloud Board & Batten Shutters
- White Bridgeport Steel Extended Panel Garage Door
- Black Gutters

DESIGN OPTIONS SUMMARY

STRUCTURAL

Elevation C

Optional Rear Covered Porch – 12' x 10'

Optional Flex Room w/ French Doors

BASE PRICE: \$379,300

Standard

\$8,800

\$1,410

DESIGN CENTER OPTIONS \$5,441

Add Smart Keypad Deadbolt Front Door

Add Accent Wall Option #1 – Painted Square Panel Accent Wall –
Flex Room

Kitchen Level 2 Granite

LVP Lvl 1 – Great Room

LVP Lvl 1 – Flex Room

LVP Lvl 1 – Kitchen/Dining Area

LVP Lvl 1 – Powder Room

LVP Lvl 1 – Hall #1

Stainless Steel Electric Range, Microwave, and Dishwasher

TOTAL OPTIONS ADDED

\$15,651

TOTAL SALES PRICE: \$394,951