

Brookstone Village

HOMESITE 125

221 Meadow Sage Street
Raeford, NC

THE ABERDEEN HOMEPLAN

ELEVATION C

2,234 SQFT | 3-4 BR | 2.5 BA | 2 CAR GARAGE



.19 ACRE

Find your place to call home in Brookstone Village! This gated community is in a prime location just off HWY 401 in the Raeford area, minutes from every resource and activity! Just around the corner, you will find First Health Moore Regional Hospital and First Health Convenient Care. Find fitness opportunities at Fit4Life Health Club and CrossFit Raeford. Try indoor Skydiving at Paraclete XP, let the kids jump and explore at JP's Jump Masters indoor trampoline park, or get the family together at the local Round-A-Bout Skating Center! You are also just down the road from multiple grocery stores, shopping centers, and restaurants.

NEW HOME SPECIALISTS

910.405.8311

info@cavinessandcates.com



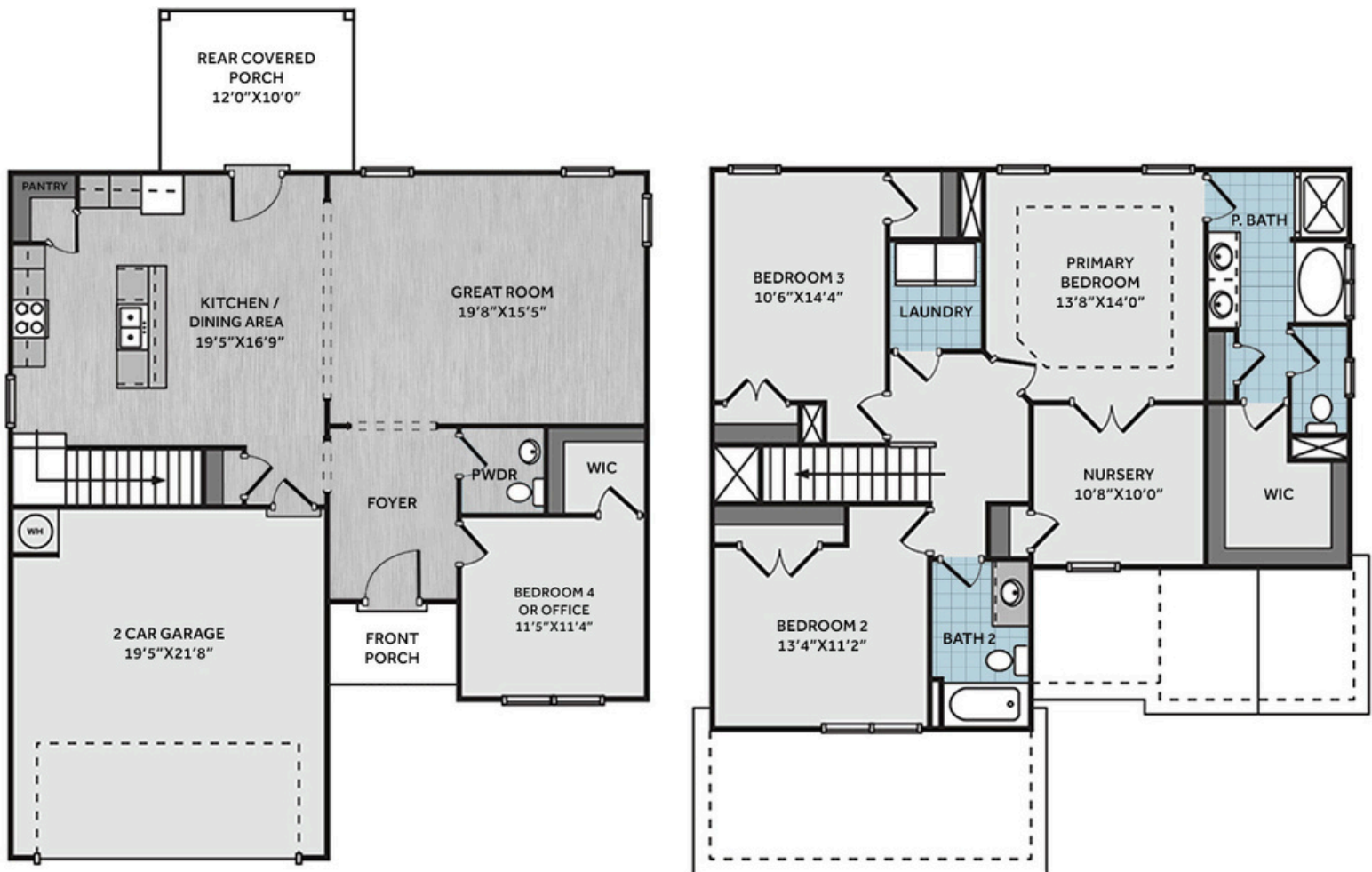
Photos, Options,
Virtual Tours & More



WWW.CATESBUILDING.COM



WWW.CAVINESSANDCATES.COM



This home offers a spacious great room that flows into the eat-in kitchen, creating a warm, open layout. Off the foyer, a flexible home office with a walk-in closet can serve as a bedroom, while a nearby half bath adds convenience. The kitchen includes an island, "Azul Platino" granite countertops, white shaker cabinets, a corner pantry, a dining area with rear porch access, and stainless-steel appliances including a microwave, dishwasher, and smooth-top range. The private primary suite boasts a tray ceiling with crown molding, and French door access to an adjoining nursery, along with an en-suite bath featuring a white dual vanity with "Niagara" quartz countertops, a garden tub, walk-in shower, private water closet, linen closet, and walk-in closet access. Upstairs, two additional bedrooms share hall access to a laundry room and a full bathroom with a vanity and tub/shower combination. LVP flooring runs throughout the first-floor main living areas. Exterior highlights include low-maintenance vinyl siding with shake accents, stone skirt, dimensional roof shingles, and a front door painted in SW "Watery" with smart keypad entry. This home also includes a two-car garage, fiber optic internet availability, an Energy Plus Certification, and is backed by a 1-2-10-year builder in-house warranty.

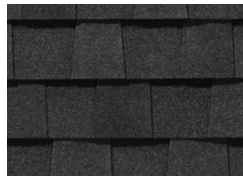
KITCHEN

Door Style:
Fairmont

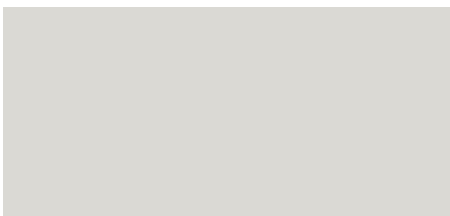
Color:
White



EXTERIOR



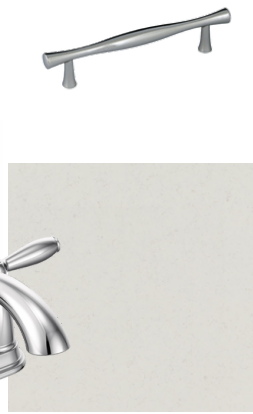
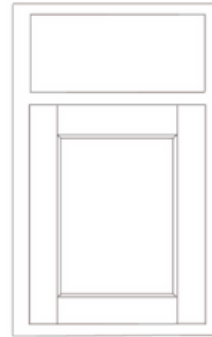
PAINT



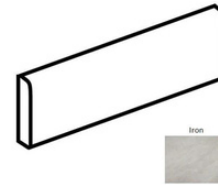
BATHROOM

Door Style:
Fairmont

Color:
White



FLOORING



LIGHTING



KITCHEN

- Brushed Nickel Brantford Kitchen Sink Fixture
- Standard SS 50/50 Double Bowl Sink
- Fairmont White Flat Panel Cabinets w/ Brushed Nickel BP20576195 Pulls
- 1/2 Bullnose Edge Azul Platino Granite Countertops
- Standard Kitchen Layout
- Ferguson/Frigidaire Electric Stainless Steel Appliances (Dishwasher, Electric Range, and Over-the-Range Microwave)

BATHROOM

- Niagara Quartz Countertops w/ Brantford Chrome Bath Fixtures
- Fairmont White Flat Panel Cabinets w/ Chrome BP9161196180 Pulls
- Garden Tub and Fiberglass Shower Layout
- CS23 w/ #89 Smoke Gray Grout Ceramic Tile Primary Shower Surround & CS23 12x12 w/ #89 Smoke Gray Grout Ceramic Tile Garden Tub Surround
- CS23 w/ #89 Smoke Gray Grout Ceramic Tile Surround in Bath #2

FLOORING

- LVP Optimum Plus - Driftwood #1056 (Foyer, Great Room, Kitchen/Dining Area, Powder Room)
- Vinyl Streamline - Soft Gray #5226 (Primary Bath, Bath #2, Laundry)
- Graceful Finesse Concrete Carpeting

INTERIOR PAINT & TRIM

- Primary Interior Color: First Star SW7646 w/ Matching Ceiling

LIGHTING

- Seville Brushed Nickel Lighting Package (Whole House)

EXTERIOR

- Paint Grade Smooth, 6-Panel Front Door w/ Smart Keypad Deadbolt Front Door
- Front Door Painted: Watery SW6478
- Moire Black Dimensional Shingles
- Norris Grey Stack Stone Facade
- White Vinyl Body Siding
- White Vinyl Accent Shake
- White Exterior Trim
- 4 over 1 White Windows
- Black Board & Batten Shutters
- White Gallery Steel Long Panel Garage Door
- Black Gutters

DESIGN OPTIONS SUMMARY

STRUCTURAL

Elevation C

Optional Rear Covered Porch – 12' x 10'

BASE PRICE: \$333,343

Standard

\$8,800

DESIGN CENTER OPTIONS \$3,757

Add Smart Keypad Deadbolt Front Door

Kitchen Level 2 Granite

LVP Lvl 1 ILO Lvl 1 Carpet – Great Room

LVP Lvl 1 ILO Lvl 1 Vinyl – Kitchen/Dining Area

LVP Lvl 1 ILO Lvl 1 Vinyl – Powder Room

Stainless Steel Electric Range, Microwave, and Dishwasher

TOTAL OPTIONS ADDED

\$12,557

TOTAL SALES PRICE: \$345,900

Disclaimer: In an effort to continuously improve and develop our products, Caviness & Cates reserves the right to change products, features, pricing, and specifications without prior notice. Features may vary between homes built within the same community. Please see actual home purchase & sale agreement for additional information, disclosures, and disclaimers. Plans are artistic renderings and may not reflect final product. All information on square footage, acreage, and dimensions should be considered approximate. Consult with New Homes Sales Specialist before writing an offer.