



TUCKER HILL FARM

HOMESITE 13

2901 Tucker Hill Drive
Grimesland, NC

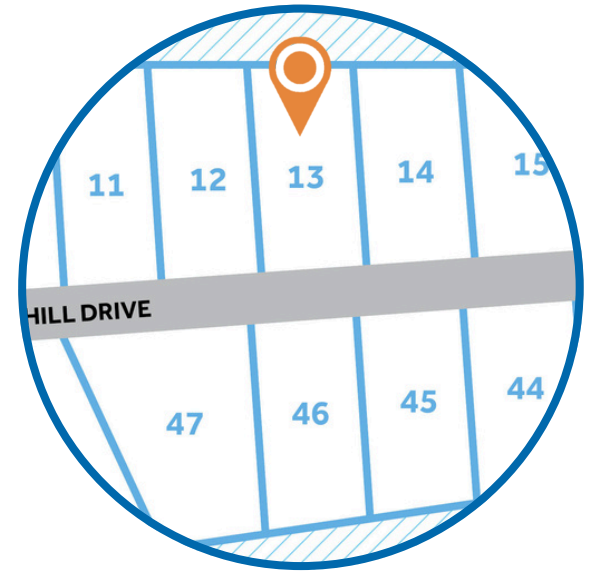
THE WEYMOUTH HOMEPLAN

ELEVATION C

1,854 SQFT | 3 BR | 2 BA | 2 CAR GARAGE



*Artistic Rendering not lot specific. For representation purposes only.



.58 ACRE

Discover the charm of Tucker Hill Farm! Nestled just off Tucker Road, this exclusive enclave of only 55 homes offers spacious homesites—some spanning over an acre—giving you room to breathe while staying just 15 minutes from the vibrant shopping, dining, and entertainment of Uptown Greenville.

Here, you'll find expertly designed home plans, superior craftsmanship, and the quality you expect—all backed by the signature Caviness & Cates 1-2-10 year in-house warranty. Escape the hustle and bustle without sacrificing convenience—Tucker Hill Farm is waiting to welcome you home!

NEW HOME SPECIALISTS

910.405.8311

info@cavinessandcates.com



Photos, Options,
Virtual Tours & More

SALES AND MARKETING BY:



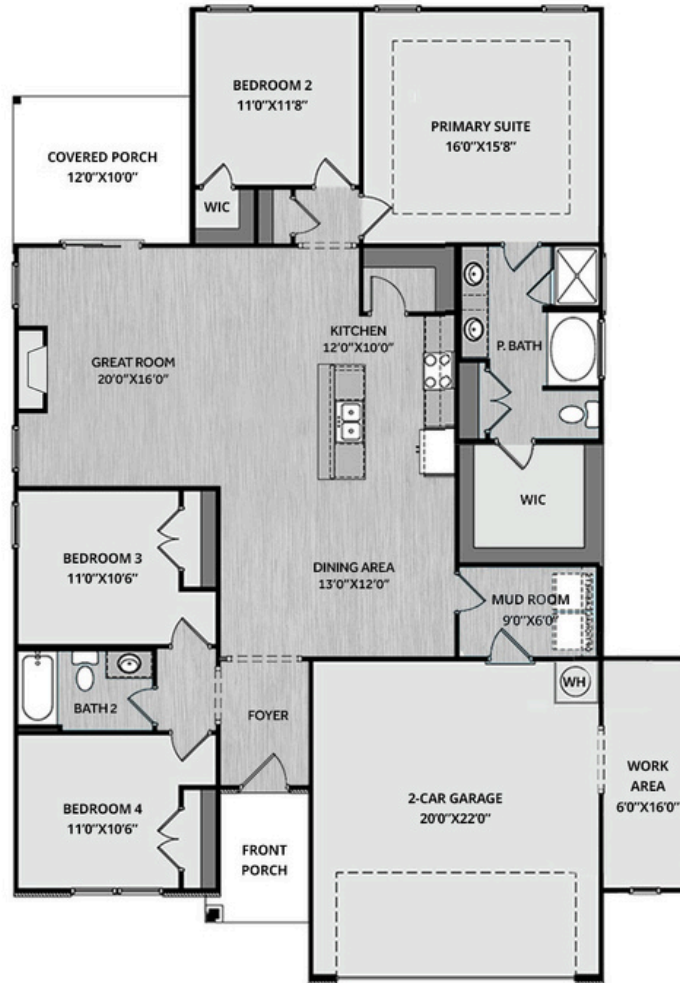
TYRE REALTY GROUP



WWW.CAVINESSANDCATES.COM



MAIN FLOOR



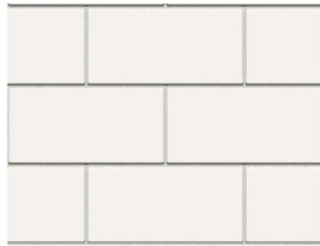
The Weymouth home offers a spacious great room with a natural gas fireplace, featuring a decorative mantle with "Absolute Black" granite surround, and convenient access to the rear covered porch through sliding glass doors. The open kitchen overlooks the great room and features granite countertops in "Luna Pearl," white shaker cabinets, a subway tile backsplash in "Arctic White" set in a brick pattern, a corner pantry, a spacious dining area, and stainless-steel appliances, including a microwave, dishwasher, and gas range. Off the dining area, a mudroom with washer/dryer connections leads to the garage. The large primary suite boasts a tray ceiling and crown molding, with a primary bath that offers a dual sink vanity with a quartz countertop in "Simply White," white shaker cabinets with a center drawer stack, a walk-in shower and separate garden tub with tile surround, luxury vinyl plank flooring, and a walk-in closet. There are two additional bedrooms off the foyer with hall access to a full bathroom with a vanity and a tub/shower combination with tile surround, and another bedroom is located next to the primary suite. The home features durable luxury vinyl flooring in the foyer, kitchen/dining area, great room, mudroom, and hall bath. The exterior has low-maintenance vinyl siding with shake and board and batten accents, a stone skirt, and dimensional roof shingles. The front door is painted in Sherwin Williams "Iron Ore" and includes a transom window and smart keypad access to the home. Additional features include a 2-car front-loading garage with a work area extension and Energy Plus Certification with a 1-2-10-year builder in-house warranty.

KITCHEN

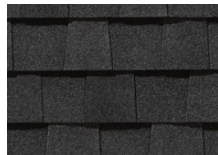
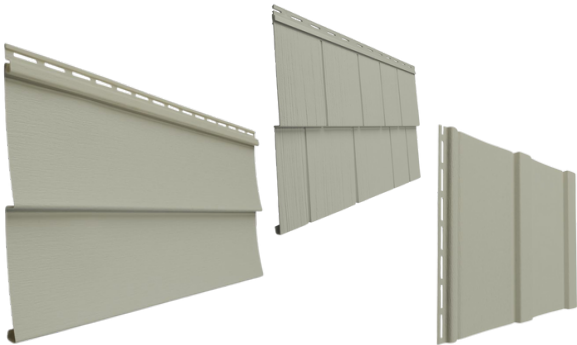
Door Style:
Fairmont



Color:
White



EXTERIOR

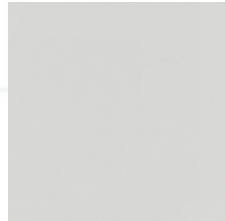


BATHROOM

Door Style:
Fairmont



Color:
White



FLOORING



Ivory



AR04

LIGHTING



KITCHEN

- Brushed Nickel Brantford Kitchen Sink Fixture
- Standard SS 50/50 Double Bowl Sink
- Fairmont White Flat Panel Cabinets w/ Brushed Nickel 6501195 Pulls
- 1/2 Bullnose Edge Luna Pearl Granite Countertops
- 3x6 Subway Tile - Color Wheel Classic / 3x6 #0190 Arctic White Glossy w/ #44 Bright White Grout - Set in Brick Pattern
- Standard Kitchen Layout
- Ferguson/Frigidaire Natural Gas Stainless Steel Appliances (Dishwasher, Gas Range, and Over-the-Range Microwave)

BATHROOM

- Simply White Quartz Countertops Brushed Nickel Brantford Bath Sink Fixture
- Brushed Nickel BP9161196195 Pulls
- ARO4 w/ #93 Fossil Grout Ceramic Tile Shower Surround & ARO4 12x12 w/ #93 Fossil Grout Ceramic Tile Garden Tub Surround
- Fairmont White Flat Panel Cabinets
- Garden Tub and Fiberglass Shower Layout

FLOORING

- LVP Optimum Plus - Lighthouse #5091 (Foyer, Great Room, Kitchen/Breakfast, Hall #1, Hall #2, Primary Bath, Bath #2, Laundry)
- Graceful Finesse Concrete Carpeting

FIREPLACE

- NDV36 NG - Natural Gas Fireplace
- Wescott Mantel and Absolute Black Surround

INTERIOR PAINT & TRIM

- Primary Interior Color: First Star SW7646 w/ Matching Ceiling

LIGHTING

- Seville Brushed Nickel Package
- 2 Pendants over Kitchen Island
 - Model: 6537001-962
- 4 LED Recess Lights in Kitchen
- 2 Bulb Floodlights on Rear Corners

EXTERIOR

- Paint Grade Smooth, 6-Panel Front Door & Transom Package Painted Iron Ore SW7069
- Moire Black Dimensional Shingles
- Tapered Columns with Stone Base
- Norris Grey LedgeStone Stone Facade
- Scottish Thistle Vinyl Body Siding
- Scottish Thistle Vinyl Accent B&B
- Scottish Thistle Vinyl Accent Shake
- White Exterior Trim
- 4 over 1 White Windows
- White Ranch Garage Door w/ Spear Style Decorative Hardware
- White Gutters
- Sod Location: Front Only

DESIGN OPTIONS SUMMARY

STRUCTURAL

BASE PRICE: \$358,095

Elevation C	\$0,000
Optional Rear Covered Porch - 12'x10'	\$8,800
Optional Garage Storage/Work Area	\$6,820
Optional Gas Fireplace on Exterior Wall	\$1,650

DESIGN CENTER OPTIONS

\$14,535

Brantford 4" Spread Brushed Nickel Plumbing Package (Whole House)
Raised/Elongated Toilet (x1- Bath #2)
6-Panel Front Door & Transom Package
Kitchen Pendants: Arilda One Light Pendant - 6537001-962 (x2- Over Kitchen Island)
Add Recess Light Assembly to Non Standard Location (x4- Kitchen)
Add Two - 2 Bulb Floodlights on Single Switch Circuit (Rear Corners)
Add Smart Keypad Deadbolt Front Door
Add Spear Style Decorative Hardware to Garage Door
Kitchen - Add 42" Wall Cabinets
Kitchen - Add 2 1/4" Crown to Standard Cabinet Layout
Primary Bath - Adult Height Vanity
Add 12" Stack of Drawers to Primary Bath Vanity
Upgrade all Vanity Bowls to Square Bowls
Level 1 Fireplace Mantel
Level 1 Fireplace Surround (No Hearth)
LVP Lvl 1 ILO Lvl 1 Carpet- Great Room
LVP Lvl 1 ILO Lvl 1 Vinyl- Kitchen/Breakfast
LVP Lvl 1 ILO Lvl 1 Carpet- Hall #1
LVP Lvl 1 ILO Lvl 1 Carpet- Hall #2
LVP Lvl 1 ILO Lvl 1 Vinyl- Primary Bath
LVP Lvl 1 ILO Lvl 1 Vinyl- Bath #2
LVP Lvl 1 ILO Lvl 1 Vinyl- Laundry
Kitchen Backsplash: 3x6 Subway Tile - Color Wheel Classic
Upgrade to Front Door Handleset
Stainless Steel Gas Range, Microwave, and Dishwasher

TOTAL OPTIONS ADDED

\$31,805

TOTAL SALES PRICE: \$389,900

Disclaimer: In an effort to continuously improve and develop our products, Caviness & Cates reserves the right to change products, features, pricing, and specifications without prior notice. Features may vary between homes built within the same community. Please see actual home purchase & sale agreement for additional information, disclosures, and disclaimers. Plans are artistic renderings and may not reflect final product. All information on square footage, acreage, and dimensions should be considered approximate. Consult with New Homes Sales Specialist before writing an offer.