

Brookstone Village

HOMESITE 84

348 Tulip Oak Drive
Raeford, NC

THE CLAYTON HOMEPLAN

ELEVATION C

2,560 SQFT | 4 BR | 3.5 BA | 2 CAR GARAGE



.215 ACRE

Find your place to call home in Brookstone Village! This gated community is in a prime location just off HWY 401 in the Raeford area, minutes from every resource and activity! Just around the corner, you will find First Health Moore Regional Hospital and First Health Convenient Care. Find fitness opportunities at Fit4Life Health Club and CrossFit Raeford. Try indoor Skydiving at Paraclete XP, let the kids jump and explore at JP's Jump Masters indoor trampoline park, or get the family together at the local Round-A-Bout Skating Center! You are also just down the road from multiple grocery stores, shopping centers, and restaurants.

NEW HOME SPECIALISTS

910.405.8311

info@cavinessandcates.com



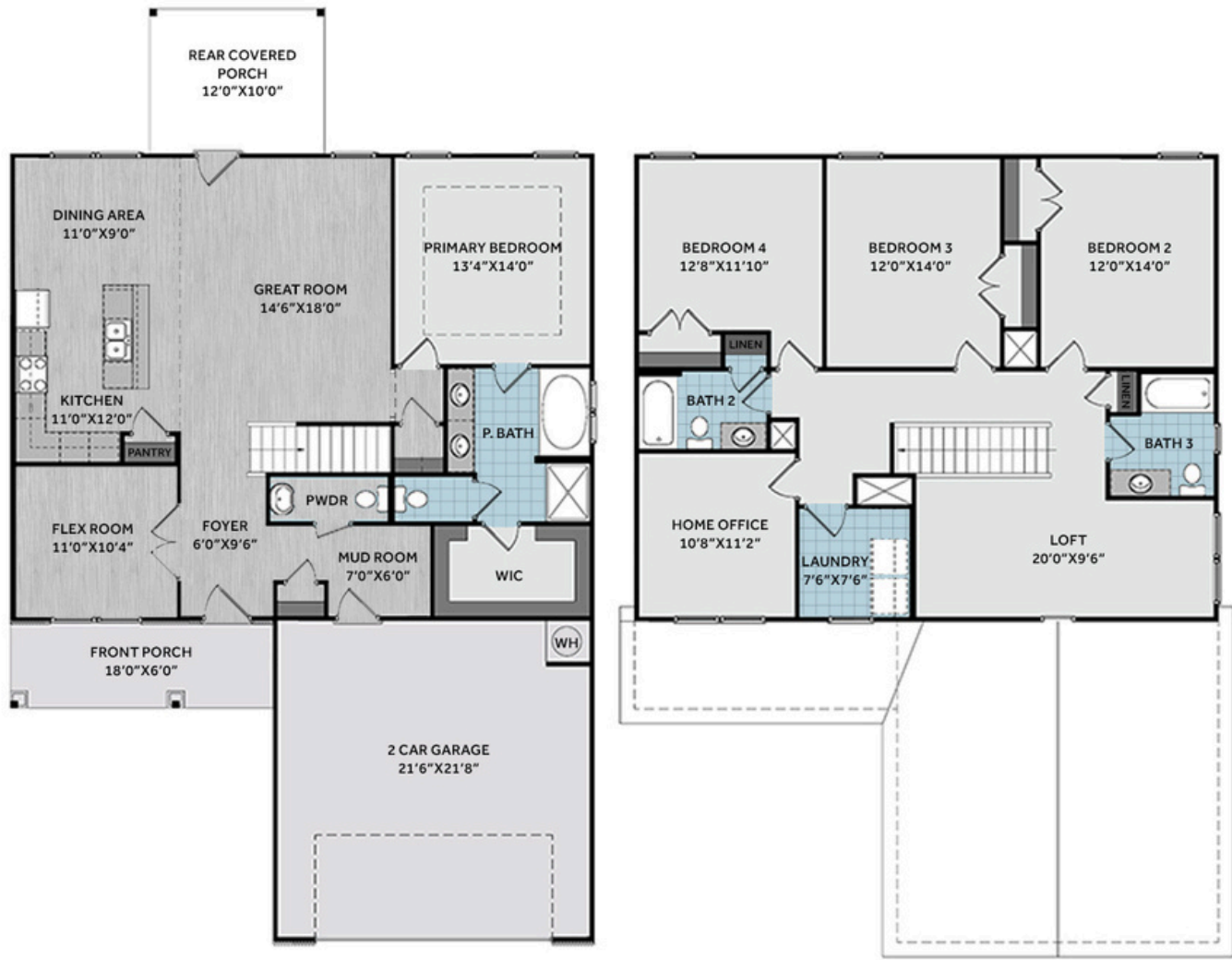
Photos, Options,
Virtual Tours & More



WWW.CATESBUILDING.COM



WWW.CAVINESSANDCATES.COM



First-floor primary suite features a tray ceiling with crown molding, a spacious en-suite bath with a white dual-sink vanity, "Simply White" quartz countertops, a walk-in shower, a garden tub, a private water closet, and a large walk-in closet. The open-concept great room has access to a rear covered porch and connects to the kitchen and dining area.

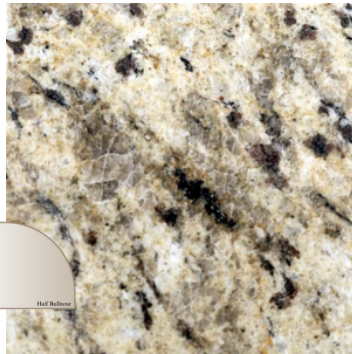
The kitchen overlooks the great room and boasts an island with a sink, "Giallo Ornamental" granite countertops, white shaker cabinets, pantry, and stainless-steel appliances including a microwave, dishwasher, and smooth-top range. Off the foyer, a flex room and mudroom sit across from each other; the mudroom includes a coat closet, half-bath, and garage access. Upstairs features a loft with a linen closet, home office, laundry room, three additional bedrooms, and two full baths, each with a vanity and tub/shower combo. Durable LVP flooring runs through key living areas. Exterior details include low-maintenance vinyl siding with shake accents, dimensional shingles, a covered front porch, and a front door painted SW "Iron Ore" with smart keypad entry. Additional features include a 2-car garage, fiber optic internet availability, in-house 1-2-10 builder warranty, and Energy Plus certification.

KITCHEN

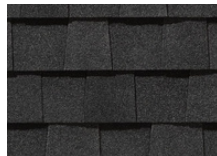
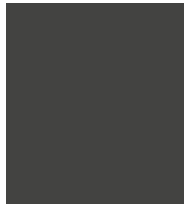
Door Style:
Fairmont



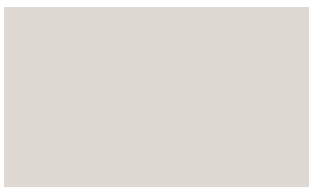
Color:
White



EXTERIOR

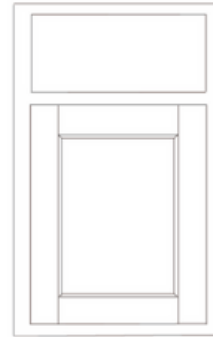


PAINT



BATHROOM

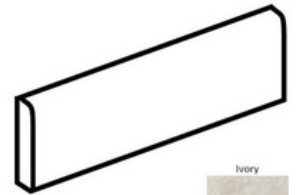
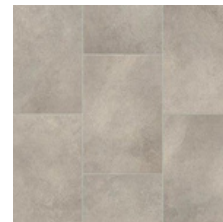
Door Style:
Fairmont



Color:
White



FLOORING



LIGHTING



KITCHEN

- Brushed Nickel Brantford Kitchen Sink Fixture
- Standard SS 50/50 Double Bowl Sink
- Fairmont White Flat Panel Cabinets w/ Brushed Nickel BP20576195 Pulls
- 1/2 Bullnose Edge Giallo Ornamental Granite Countertops
- Standard Kitchen Layout
- Ferguson/Frigidaire Electric Stainless Steel Appliances (Dishwasher, Electric Range, and Over-the-Range Microwave)

BATHROOM

- Simply White Quartz Countertops w/ Brantford Chrome Bath Sink Fixture
- Fairmont White Flat Panel Cabinets w/ Chrome BP9161196180 Pulls
- Garden Tub and Fiberglass Shower Layout
- ARO4 w/ #93 Fossil Grout Ceramic Tile Primary Shower Surround & ARO4 12x12 w/ #93 Fossil Grout Ceramic Tile Garden Tub Surround
- ARO4 w/ #93 Fossil Grout Ceramic Tile Surround in Bath #2 and Bath #3

FLOORING

- LVP Optimum Plus - Wild Dunes #7089 (Foyer, Great Room, Flex Room, Kitchen/Dining Area, Powder Room, Hall #1)
- Vinyl Origins - Prime #5146 (Primary Bath, Bath #2, Bath #3, Laundry)
- Graceful Finesse Ecru Carpeting

INTERIOR PAINT & TRIM

- Primary Interior Color: City Loft SW7631 w/ Matching Ceiling

LIGHTING

- Seville Brushed Nickel Lighting Package (Whole House)

EXTERIOR

- Paint Grade Smooth, 6-Panel Front Door w/ Smart Keypad Deadbolt Front Door
- Front Door Painted: Iron Ore SW7069
- Moire Black Dimensional Shingles
- Shadow Mountain - Stack Stone Facade
- Linen Vinyl Body Siding
- Linen Vinyl Accent Shake
- White Exterior Trim
- Peppercorn Board & Batten Shutters
- 4 over 1 White Windows
- White Gallery Steel Short Panel Garage Door
- White Gutters

DESIGN OPTIONS SUMMARY

STRUCTURAL

Elevation C

Optional Rear Covered Porch - 10'x12'

Optional Flex Room w/ French Doors

BASE PRICE: \$375,149

Standard

\$8,800

\$1,410

DESIGN CENTER OPTIONS \$4,541

Add Smart Keypad Deadbolt Front Door

Kitchen Level 2 Granite

LVP Level 1 ILO Level 1 Carpet- Great Room

LVP Level 1 ILO Level 1 Carpet- Flex Room

LVP Level 1 ILO Level 1 Vinyl- Kitchen/Dining Area

LVP Level 1 ILO Level 1 Vinyl- Powder Room

LVP Level 1 ILO Level 1 Carpet- Hall #1

Stainless Steel Electric Range, Microwave, and Dishwasher

TOTAL OPTIONS ADDED

\$14,751

TOTAL SALES PRICE: \$389,900