

Blakefield

HOMESITE 283

413 Whitestone Drive
Fayetteville, NC

THE WEYMOUTH HOMEPLAN

ELEVATION C

1,854 SQFT | 4 BR | 2 BA | 2 CAR GARAGE W/
WORK AREA



.24 ACRE

Nestled near Eastover and Fayetteville, Blakefield features spacious homesites in a scenic, rural setting while keeping you close to everything you need.

Enjoy easy access to shopping, dining, and entertainment, including Baywood Golf & Country Club, Cape Fear Botanical Garden, and beautiful natural parks. With downtown Fayetteville minutes away, Ft. Bragg less than 20 miles away, and schools just minutes from your doorstep, Blakefield offers the perfect location for growing families to call home.

NEW HOME SPECIALISTS

910.405.8311

info@cavinessandcates.com

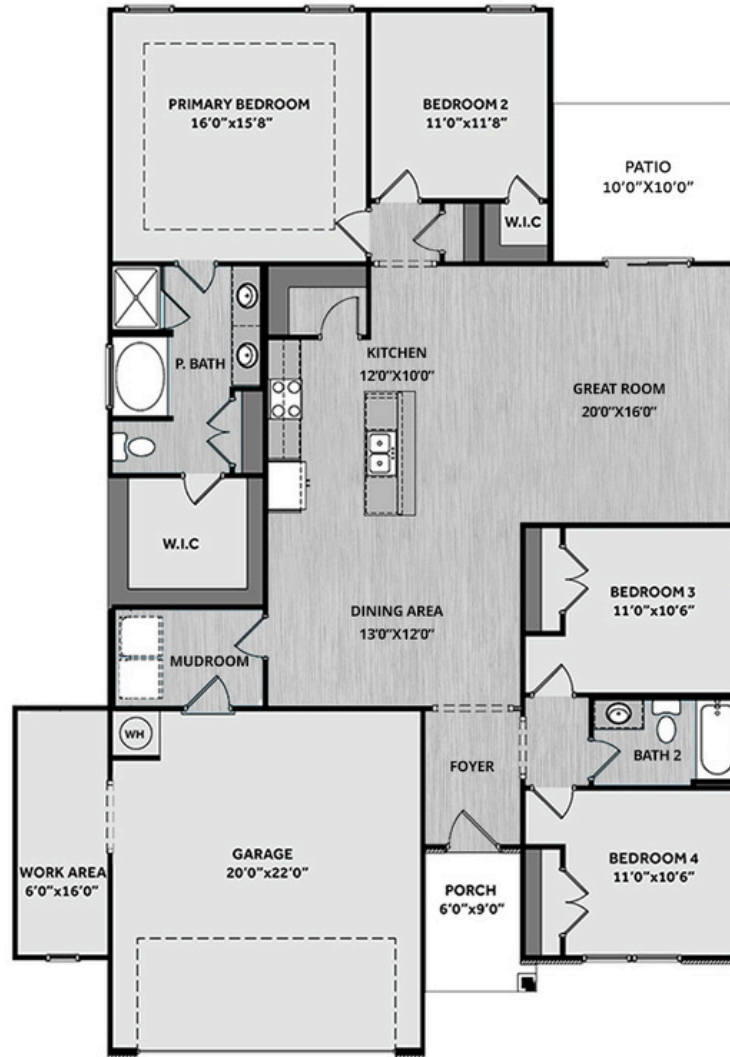


Photos, Options,
Virtual Tours & More

SALES AND MARKETING BY:



Builder's Marketing Group
WWW.CAVINESSANDCATES.COM



The Weymouth home features a foyer with two-piece crown molding and a spacious great room with sliding glass doors that provide seamless access to the grill patio. Designed for both style and functionality, the open kitchen overlooks the great room and features "Luna Pearl" granite countertops, white shaker cabinets, a corner pantry, a spacious dining area, and a suite of stainless-steel appliances—including a microwave, dishwasher, and smooth top range—for added convenience and elegance. Off the dining area, a mudroom with washer/dryer connections leads to the garage. The expansive primary suite showcases a tray ceiling with crown molding, while the ensuite bathroom features a dual sink vanity with a "Niagara" quartz countertop, white shaker cabinets, a walk-in shower and separate garden tub with tile surround, a linen closet, and a spacious walk-in closet. Two additional bedrooms are located off the foyer, each with hall access to a full bathroom that includes a vanity and a tub/shower combination, while an additional bedroom is situated next to the primary suite. Durable luxury vinyl plank (LVP) flooring extends through the foyer, great room, kitchen, dining area, mudroom, and bathrooms. The exterior showcases low-maintenance vinyl siding with shake and board and batten accents, a stone skirt, and dimensional roof shingles. The front door, painted in Sherwin Williams "Black Magic," features a transom window and smart keypad access to the home for added convenience. This home features a 2-car front-loading garage with a dedicated work area and comes with Fiber Optic Internet availability, an Energy Plus Certification, and a 1-2-10-year in-house builder warranty for added peace of mind.

KITCHEN

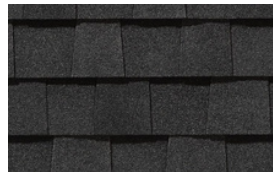
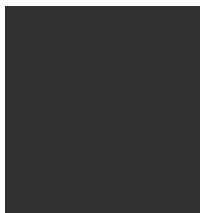
Door Style:
Fairmont



Color:
White



EXTERIOR



PAINT

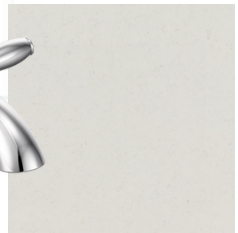


BATHROOM

Door Style:
Fairmont



Color:
White



FLOORING



LIGHTING





THE WEYMOUTH HOMEPLAN

LOT 283 | ELEVATION C
1,854 SQFT | 4 BR | 2 BA | 2 CAR GARAGE W/
WORK AREA

KITCHEN

- Brushed Nickel Brantford Kitchen Sink Fixture
- Standard SS 50/50 Double Bowl Sink
- Fairmont White Flat Panel Cabinets w/ Brushed Nickel 6501195 Pulls
- 1/2 Bullnose Edge Luna Pearl Granite Countertops
- 3x6 Subway Tile - Color Wheel Classic / 3x6 #0190 Arctic White Glossy w/ #44 Bright White Grout - Set in Brick Pattern Kitchen Backsplash
- Standard Kitchen Layout w/ 42" Wall Cabinets and 2 1/4" Crown on Kitchen Cabinets
- Ferguson/Frigidaire Electric Stainless Steel Appliances (Dishwasher, Electric Range, and Over-the-Range Microwave)

BATHROOM

- Brantford 4" Spread Chrome Plumbing Package (Whole House)
- Niagara Quartz Countertops w/ Square Bowls
- Fairmont White Flat Panel Cabinets w/ Chrome BP9161196180 Pulls
- Primary Bath Adult Height Cabinets and Bath #2 Adult Height Cabinets
- Raised/Elongated Toilets in Primary Bath and Bath #2
- Garden Tub and 36" x 48" Shower Layout
- ARO4 w/ #93 Fossil Grout Ceramic Tile Primary Shower Bullnose and ARO4 12x12 w/ #93 Fossil Grout Ceramic Tile on Garden Tub Surround
- ARO4 w/ #93 Fossil Grout Ceramic Tile Bullnose on Bath #2

FLOORING

- Optimum Plus - Wild Dunes #7089 LVP in Foyer, Great Room, Kitchen / Dining Area, Hall #1, Hall #2, Primary Bath, Bath #2, and Laundry
- Graceful Finesse Concrete Carpeting

INTERIOR PAINT & TRIM

- Primary Interior Color: First Star SW7646 w/ Matching Ceiling
- Tray Ceiling in Primary Suite
- Board & Batten Style Wainscot and 2 Piece Crown Molding in Foyer
- Pull Down Attic Stairs

LIGHTING / ELECTRICAL

- Seville Lighting Package Brushed Nickel (Whole House)
- 2 Zire One Light Pendants over Kitchen Island
 - Model: 6590301-962
- 2 Bulb Floodlights on Rear Corners

EXTERIOR

- Paint Grade Smooth, 6-Panel Front Door & Transom Package w/ Smart Keypad Deadbolt and Brushed Nickel Handleset
- Front Door Painted: Black Magic SW6991
- Moire Black Dimensional Shingles
- Tapered / Stone Base Columns
- White Vinyl Body Siding
- White Board & Batten Accent
- White Shake Accent
- White Exterior Trim
- 4 over 1 White Windows
- White Ranch Garage Door
- Black Gutters





THE WEYMOUTH HOMEPLAN

LOT 283 | ELEVATION C
1,854 SQFT | 4 BR | 2 BA | 2 CAR GARAGE W/
WORK AREA

DESIGN OPTIONS SUMMARY

STRUCTURAL

Elevation C

Optional Garage Storage/Work Area

Concrete Patio - 10' x 10'

BASE PRICE: \$334,265

STANDARD

\$6,820

\$1,000

DESIGN CENTER OPTIONS \$12,815

Raised/Elongated Toilet (x1- Bath #2)

6-Panel Front Door & Transom Package

Kitchen Pendant Lights: Zire One Light Pendant - 6590301-962 (x2- Over Kitchen Island)

Add Two - 2 Bulb Floodlights on Single Switch Circuit (x2- Rear Corners)

Add Smart Keypad Deadbolt Front Door

Add Level 2 Board & Batten Style Wainscot - Foyer

Add 2 Piece Crown Molding - Foyer

Pull Down Attic Stairs

Kitchen - Add 42" Wall Cabinets

Kitchen - Add 2 ¼" Crown

Primary Bath - Adult Height Vanity

Hall Bath - Adult Height Vanity (x1- Bath #2)

Upgrade all Vanity Bowls to Square Sinks

LVP Level 1 - Foyer, Great Room, Kitchen / Dining Area, Hall #1, Hall #2,

Primary Bath, Bath #2, Laundry

Kitchen Backsplash: 3x6 Subway Tile - Color Wheel Classic

Upgrade to Front Door Handleset

Stainless Steel Electric Range, Microwave and Dishwasher

TOTAL OPTIONS ADDED

\$20,635

TOTAL SALES PRICE: \$354,900

Disclaimer: In an effort to continuously improve and develop our products, Caviness & Cates reserves the right to change products, features, pricing, and specifications without prior notice. Features may vary between homes built within the same community. Please see actual home purchase & sale agreement for additional information, disclosures, and disclaimers. Plans are artistic renderings and may not reflect final product. All information on square footage, acreage, and dimensions should be considered approximate. Consult with New Homes Sales Specialist before writing an offer.

