



TUCKER HILL FARM

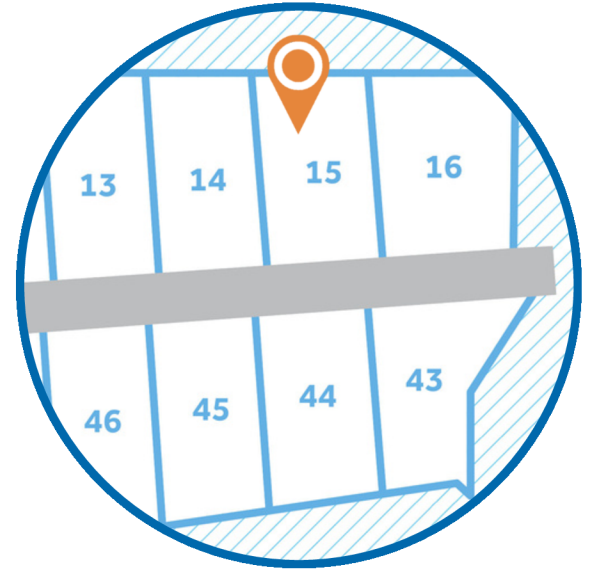
HOMESITE 15

2921 Tucker Hill Drive
Grimesland, NC

THE GRANVILLE HOMEPLAN

ELEVATION C

2,724 SQFT | 4 BR | 2.5 BA | 3 CAR GARAGE



.57 ACRE

Discover the charm of Tucker Hill Farm! Nestled just off Tucker Road, this exclusive enclave of only 55 homes offers spacious homesites—some spanning over an acre—giving you room to breathe while staying just 15 minutes from the vibrant shopping, dining, and entertainment of Uptown Greenville.

Here, you'll find expertly designed home plans, superior craftsmanship, and the quality you expect—all backed by the signature Caviness & Cates 1-2-10 year in-house warranty. Escape the hustle and bustle without sacrificing convenience—Tucker Hill Farm is waiting to welcome you home!

NEW HOME SPECIALISTS

910.405.8311

info@cavinessandcates.com



Photos, Options,
Virtual Tours & More

SALES AND MARKETING BY:



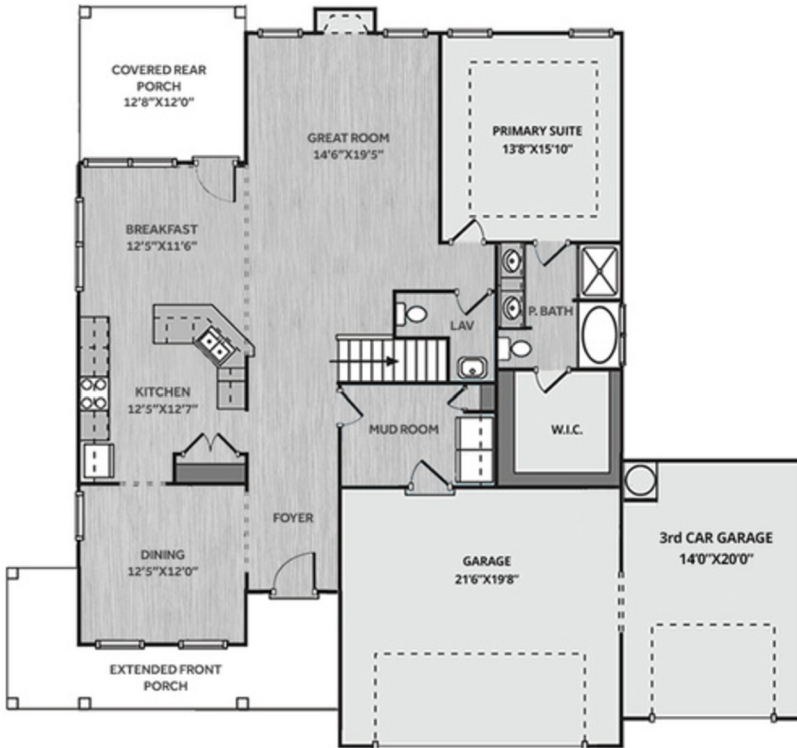
TYRE REALTY GROUP



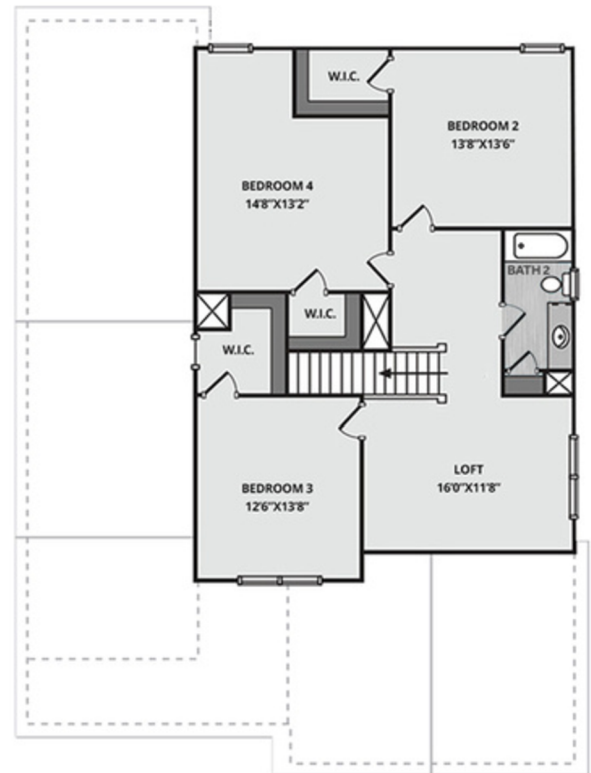
WWW.CAVINESSANDCATES.COM



FIRST FLOOR



SECOND FLOOR



A welcoming foyer opens to the formal dining room, which sits just off the entry and features a walk-through opening to the kitchen. The spacious great room is anchored by a gas log fireplace with a decorative mantel and an "Absolute Black" granite surround, creating a cozy focal point. Designed for both style and functionality, the kitchen includes a breakfast area and sink overlooking the great room, complemented by "Luna Pearl" granite countertops, a "Desert Gray" brick-pattern subway tile backsplash, white shaker cabinets, a pantry, and a suite of stainless-steel appliances—including a microwave, dishwasher, and gas range. The breakfast area provides easy access to the rear covered porch, perfect for outdoor enjoyment. The half-bath features a pedestal sink, an oval mirror, and luxury vinyl plank (LVP) flooring, while the nearby mudroom offers washer/dryer connections and a coat closet for added convenience. Located on the first floor, the primary suite boasts a tray ceiling with crown molding, and its en-suite bathroom includes a dual-sink vanity with "Niagara" quartz countertops, white shaker cabinets with a center drawer stack, a garden tub, a separate shower with a tile surround, LVP flooring, and direct access to a spacious walk-in closet. Upstairs, an open loft leads to three additional bedrooms, each with walk-in closets. A full bathroom serves the second floor, featuring a vanity, a linen closet, a tub/shower combination with a tile surround, and LVP flooring. Luxury vinyl plank flooring extends throughout the foyer, dining room, kitchen, breakfast area, mudroom, and great room, enhancing both durability and aesthetic appeal. The exterior is designed with curb appeal, featuring low-maintenance vinyl siding with shake accents, a stone skirt, and dimensional roof shingles. The extended front porch is highlighted by a Sherwin Williams "Black Magic" front door with a transom window that fills the foyer with natural light, along with smart keypad access for added convenience. Situated on a spacious .57-acre lot, this home includes a three-car front-loading garage and is Energy Plus certified, backed by a 1-2-10-year builder in-house warranty.

KITCHEN



BATHROOM



FLOORING



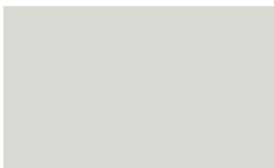
EXTERIOR



LIGHTING



PAINT



KITCHEN

- Brushed Nickel Brantford Kitchen Sink Fixture
- Standard SS 50/50 Double Bowl Sink
- Fairmont White Flat Panel Cabinets w/ Brushed Nickel 6501195 Pulls
- 1/2 Bullnose Edge Luna Pearl Granite Countertops
- 3x6 Subway Tile - Color Wheel Classic / 3x6 x114 Desert Gray Glossy w/ #89 Smoke Gray Grout - Set in Brick Pattern
- Standard Kitchen Layout
- Ferguson/Frigidaire Natural Gas Stainless Steel Appliances (Dishwasher, Gas Range, and Over-the-Range Microwave)

BATHROOM

- Niagara Quartz Countertops Brushed Nickel Brantford Bath Sink Fixture
- Brushed Nickel BP9161196195 Pulls
- ARO4 w/ #93 Fossil Grout Ceramic Tile Shower Surround & ARO4 12x12 w/ #93 Fossil Grout Ceramic Tile Garden Tub Surround
- Fairmont White Flat Panel Cabinets
- Garden Tub and Fiberglass Shower Layout

FLOORING

- LVP Optimum Plus - Lighthouse #5091 (Foyer, Great Room, Formal Dining Room, Kitchen/Breakfast, Powder Room, Primary Bath, Bath #2, Laundry)
- Graceful Finesse Concrete Carpeting

FIREPLACE

- Gas Fireplace w/ Wescott Mantel and Absolute Black Surround

INTERIOR PAINT & TRIM

- Primary Interior Color: First Star SW7646 w/ Matching Ceiling

LIGHTING

- Seville Brushed Nickel Package
- 2 Pendants over Kitchen Bar
 - Model: 5192603-962
- 4 LED Recess Lights in Kitchen
- 2 Bulb Floodlights on Rear Corners

EXTERIOR

- Paint Grade Smooth, 6-Panel Front Door & Transom Package Painted Black Magic SW6991
- Moire Black Dimensional Shingles
- Tapered Columns with Stone Base
- Norris Grey Ledgestone Facade
- Silver Gray Vinyl Body Siding
- Silver Gray Vinyl Accent Shake
- White Exterior Trim
- 4 over 4 White Windows
- White Colonial Garage Doors w/ Spear Style Decorative Hardware
- Black Gutters
- Sod Location: Front Only

DESIGN OPTIONS SUMMARY

STRUCTURAL	BASE PRICE: \$422,061
Elevation C	\$0,000
Optional 3rd Car Garage	\$16,500
Optional Wrapped Front Porch	\$4,290
Optional Gas Fireplace on Exterior Wall	\$1,650

DESIGN CENTER OPTIONS \$15,399

- Brantford 4" Spread Brushed Nickel Plumbing Package (Whole House)
- Raised/Elongated Toilet (x2- Powder Room, Bath #2)
- 6-Panel Front Door & Transom Package
- Kitchen Pendant Lights: Dianna Three Light Mini Lantern - 5192603-962 (x2- Over Kitchen Bar)
- Add Recess Light Assembly to Non Standard Location (x4- Kitchen)
- Add Two - 2 Bulb Floodlights on Single Switch Circuit (Rear Corners)
- Add Smart Keypad Deadbolt Front Door
- Add Spear Style Decorative Hardware to Garage Doors (x2)
- Kitchen - Add 42" Wall Cabinets
- Add 2 ¼" Crown to Standard Cabinet Layout
- Primary Bath - Adult Height Vanity
- Add 12" Stack of Drawers to Primary Bath Vanity
- Upgrade all Vanity Bowls to Square Bowls
- Level 1 Fireplace Mantel
- Level 1 Fireplace Surround (No Hearth)
- LVP Lvl 1 ILO Lvl 1 Carpet - Great Room
- LVP Lvl 1 ILO Lvl 1 Carpet - Formal Dining Room
- LVP Lvl 1 ILO Lvl 1 Vinyl - Kitchen/Breakfast
- LVP Lvl 1 ILO Lvl 1 Vinyl - Powder Room
- LVP Lvl 1 ILO Lvl 1 Vinyl - Primary Bath
- LVP Lvl 1 ILO Lvl 1 Vinyl - Bath #2
- LVP Lvl 1 ILO Lvl 1 Vinyl - Laundry
- Kitchen Backsplash: 3x6 Subway Tile - Color Wheel Classic
- Upgrade to Front Door Handleset
- Stainless Steel Gas Range, Microwave and Dishwasher

TOTAL OPTIONS ADDED \$37,839

TOTAL SALES PRICE: \$459,900

Disclaimer: In an effort to continuously improve and develop our products, Caviness & Cates reserves the right to change products, features, pricing, and specifications without prior notice. Features may vary between homes built within the same community. Please see actual home purchase & sale agreement for additional information, disclosures, and disclaimers. Plans are artistic renderings and may not reflect final product. All information on square footage, acreage, and dimensions should be considered approximate. Consult with New Homes Sales Specialist before writing an offer.