



TUCKER HILL FARM

HOMESITE 12

2893 Tucker Hill Drive
Grimesland, NC

THE BLADEN HOMEPLAN

ELEVATION C

3,107 SQFT | 5 BR | 3 BA | 2 CAR GARAGE



*Artistic Rendering not lot specific. For representation purposes only.



.58 ACRE

Discover the charm of Tucker Hill Farm! Nestled just off Tucker Road, this exclusive enclave of only 55 homes offers spacious homesites—some spanning over an acre—giving you room to breathe while staying just 15 minutes from the vibrant shopping, dining, and entertainment of Uptown Greenville.

Here, you'll find expertly designed home plans, superior craftsmanship, and the quality you expect—all backed by the signature Caviness & Cates 1-2-10 year in-house warranty. Escape the hustle and bustle without sacrificing convenience—Tucker Hill Farm is waiting to welcome you home!

NEW HOME SPECIALISTS

910.405.8311

info@cavinessandcates.com



Photos, Options,
Virtual Tours & More

SALES AND MARKETING BY:



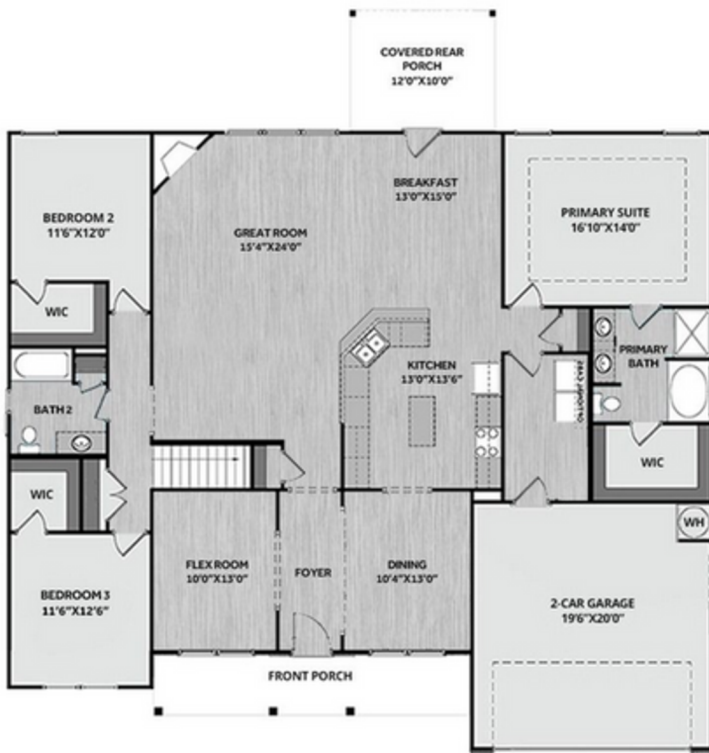
TYRE REALTY GROUP



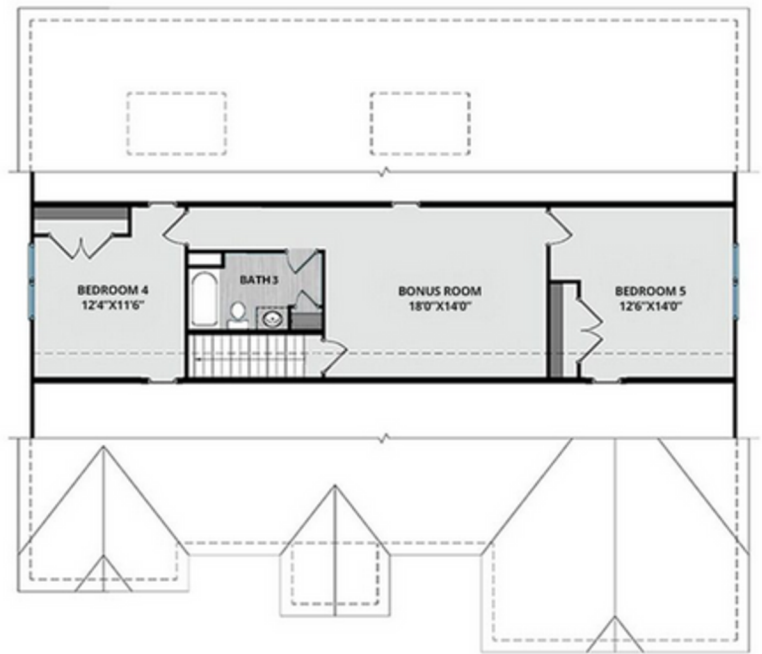
WWW.CAVINESSANDCATES.COM



FIRST FLOOR



SECOND FLOOR



Upon entering the home, you are welcomed into the foyer, where a flex room and formal dining room sit across from each other, creating a warm and inviting entryway. The foyer opens into the spacious great room, where a corner gas log fireplace with a decorative mantel and "Absolute Black" granite surround serves as a focal point.

The open-concept kitchen overlooks the great room and breakfast area, featuring an island, white shaker cabinets, "Azul Platino" granite countertops, an "Arctic White" brick-pattern subway tile backsplash, and a suite of stainless-steel appliances—including a microwave, dishwasher, and gas range—while offering easy access to the rear covered porch through the breakfast area. The first-floor primary suite offers a private retreat with a tray ceiling and crown molding, while the en-suite bathroom includes a dual vanity with a center drawer stack, white shaker cabinets, "Niagara" quartz countertops, a walk-in shower, a separate garden tub with a tile surround,

luxury vinyl plank (LVP) flooring, and a spacious walk-in closet. Also on the first floor are two additional bedrooms, each with walk-in closets and hallway access to a full bathroom featuring a vanity, a tub/shower combination, a linen closet, and LVP flooring. A laundry room is conveniently located near the garage entrance, providing washer/dryer connections. The second floor expands the home's living space with two additional bedrooms, a bonus room, and a full bathroom with a vanity, a tub/shower combination with a tile surround, a linen closet, and LVP flooring. Durable luxury vinyl plank flooring extends throughout the foyer, formal dining room, flex room, great room, kitchen, breakfast area, mudroom, and all bathrooms, ensuring both style and easy maintenance. Designed for lasting curb appeal, the exterior features low-maintenance vinyl siding with shake accents, a stone skirt, and dimensional roof shingles. The spacious front porch is highlighted by a bold front door painted in Sherwin Williams "Black Magic," with a transom window that fills the foyer with natural light and a smart keypad entry system for modern convenience. This Energy Plus Certified home includes a 1-2-10 year builder in-house warranty for peace of mind.

KITCHEN



BATHROOM



FLOORING



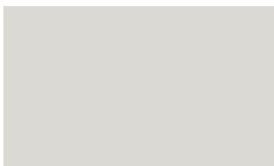
EXTERIOR



LIGHTING



PAINT



KITCHEN

- Brushed Nickel Brantford Kitchen Sink Fixture
- Standard SS 50/50 Double Bowl Sink
- Fairmont White Flat Panel Cabinets w/ Brushed Nickel BP20576195 Pulls
- 1/2 Bullnose Edge Azul Platino Granite Countertops
- 3x6 Subway Tile - Color Wheel Classic / 3x6 #0190 Arctic White Glossy w/ #44 Bright White Grout - Set in Brick Pattern
- Standard Kitchen Layout
- Ferguson/Frigidaire Natural Gas Stainless Steel Appliances (Dishwasher, Gas Range, and Over-the-Range Microwave)

BATHROOM

- Niagara Quartz Countertops Brushed Nickel Brantford Bath Sink Fixture
- Brushed Nickel BP9161196195 Pulls
- ARO4 w/ #93 Fossil Grout Ceramic Tile Shower Surround & ARO4 12x12 w/ #93 Fossil Grout Ceramic Tile Garden Tub Surround
- Fairmont White Flat Panel Cabinets
- Garden Tub and Fiberglass Shower Layout

FLOORING

- LVP Optimum Plus - Wild Dunes #7089 (Foyer, Great Room, Formal Dining Room, Flex Room, Kitchen/Breakfast, Hall #1, Primary Bath, Bath #2, Bath #3, Laundry)
- Graceful Finesse Concrete Carpeting

FIREPLACE

- Gas Fireplace w/ Wescott Mantel and Absolute Black Surround

INTERIOR PAINT & TRIM

- Primary Interior Color: First Star SW7646 w/ Matching Ceiling

LIGHTING

- Seville Brushed Nickel Package
- 3 Pendants over Kitchen Bar
 - Model: 6590301-962
- 4 LED Recess Lights in Kitchen
- 2 Bulb Floodlights on Rear Corners

EXTERIOR

- Paint Grade Smooth, 6-Panel Front Door & Transom Package Painted Black Magic SW6991
- Moire Black Dimensional Shingles
- Tapered Columns with Stone Base
- Norris Grey Stack Stone Facade
- Victorian Gray Vinyl Body Siding
- Natural Slate Vinyl Accent Shake
- White Exterior Trim
- 4 over 4 White Windows
- White Colonial Garage Door w/ Spear Style Decorative Hardware
- White Gutters
- Sod Location: Front Only

DESIGN OPTIONS SUMMARY

STRUCTURAL	BASE PRICE: \$471,490
Elevation C	\$0,000
Optional Full Front Porch w/ Stone	\$10,710
Optional Rear Covered Porch – 10’ x 12’	\$8,800
Optional Gas Fireplace on Exterior Wall	\$1,650

DESIGN CENTER OPTIONS \$17,250

- Brantford 4" Spread Brushed Nickel Plumbing Package (Whole House)
- Raised/Elongated Toilet (x2- Bath #2, Bath #3)
- 6-Panel Front Door & Transom Package
- Kitchen Pendant Lights: Zire One Light Pendant - 6590301-962 (x3- Over Kitchen Bar)
- Add Recess Light Assembly to Non Standard Location (x4- Kitchen)
- Add Two - 2 Bulb Floodlights on Single Switch Circuit (Rear Corners)
- Add Smart Keypad Deadbolt Front Door
- Add Spear Style Decorative Hardware to Garage Door
- Kitchen - Add 42" Wall Cabinets
- Kitchen - Add 2 1/4" Crown to Standard Cabinet Layout
- Primary Bath - Adult Height Vanity
- Add 12" Stack of Drawers to Primary Bath Vanity
- Kitchen Level 2 Granite
- Upgrade all Vanity Bowls to Square Bowls
- Level 1 Fireplace Mantel
- Level 1 Fireplace Surround (No Hearth)
- LVP Lvl 1 ILO Lvl 1 Carpet- Great Room
- LVP Lvl 1 ILO Lvl 1 Carpet - Formal Dining Room
- LVP Lvl 1 ILO Lvl 1 Carpet - Flex Room
- LVP Lvl 1 ILO Lvl 1 Vinyl- Kitchen/Breakfast
- LVP Lvl 1 ILO Lvl 1 Carpet- Hall #1
- LVP Lvl 1 ILO Lvl 1 Vinyl- Primary Bath
- LVP Lvl 1 ILO Lvl 1 Vinyl- Bath #2
- LVP Lvl 1 ILO Lvl 1 Vinyl- Bath #3
- LVP Lvl 1 ILO Lvl 1 Vinyl- Laundry
- Kitchen Backsplash: 3x6 Subway Tile - Color Wheel Classic
- Upgrade to Front Door Handleset
- Stainless Steel Gas Range, Microwave, and Dishwasher

TOTAL OPTIONS ADDED \$38,410

TOTAL SALES PRICE: \$509,900

Disclaimer: In an effort to continuously improve and develop our products, Caviness & Cates reserves the right to change products, features, pricing, and specifications without prior notice. Features may vary between homes built within the same community. Please see actual home purchase & sale agreement for additional information, disclosures, and disclaimers. Plans are artistic renderings and may not reflect final product. All information on square footage, acreage, and dimensions should be considered approximate. Consult with New Homes Sales Specialist before writing an offer.