

EF ELLIOT FARMS

HOMESITE 75
515 Log Pond Road
Fayetteville, NC

THE DRAYTON HOMEPLAN

ELEVATION C

2,325 SQFT | 4 BR | 2.5 BA | 2 CAR GARAGE w/
WORK AREA



.49 ACRE

Elliot Farms is a peaceful community conveniently located near multiple metro areas! Situated on the Northside of Fayetteville, Elliot Farms is less than 15 minutes from Fort Bragg gates. Enjoy nearby local attractions like ZipQuest Waterfall & Treetop Adventures and Peaden's Seafood Restaurant. Downtown Fayetteville is just a 20 minutes drive and offers local shopping, restaurants, and attractions like the Fayetteville Woodpeckers Baseball at Segra Stadium, the Special Operations Museum, and the Cape Fear Botanical Garden. Drive North and you can visit downtown Lillington, Raven Rock State Park, and Campbell University in around 25 minutes. This community is just over an hour from the city of Raleigh and the RDU International airport.

NEW HOME SPECIALISTS

910.405.8311

info@cavinessandcates.com



Photos, Options,
Virtual Tours & More



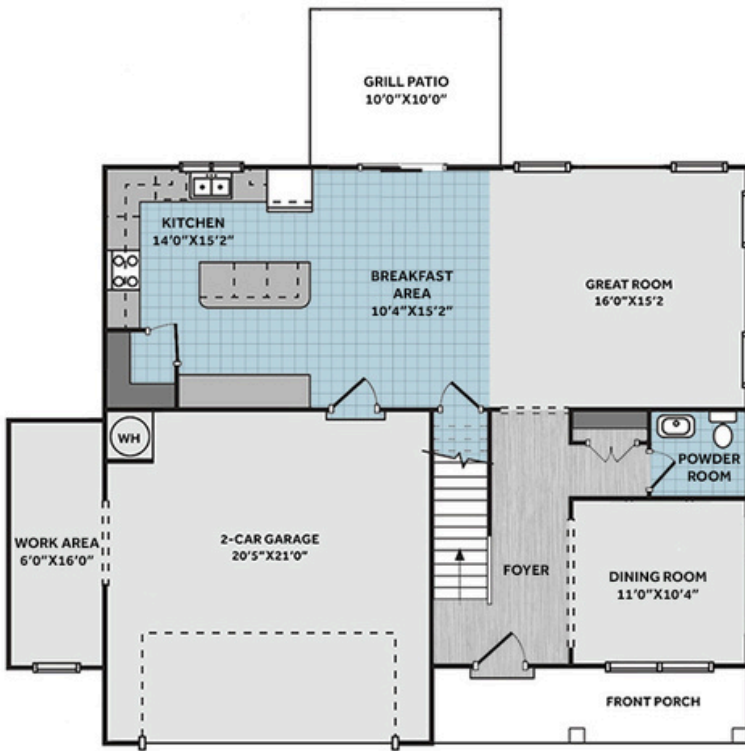
WWW.CATESBUILDING.COM



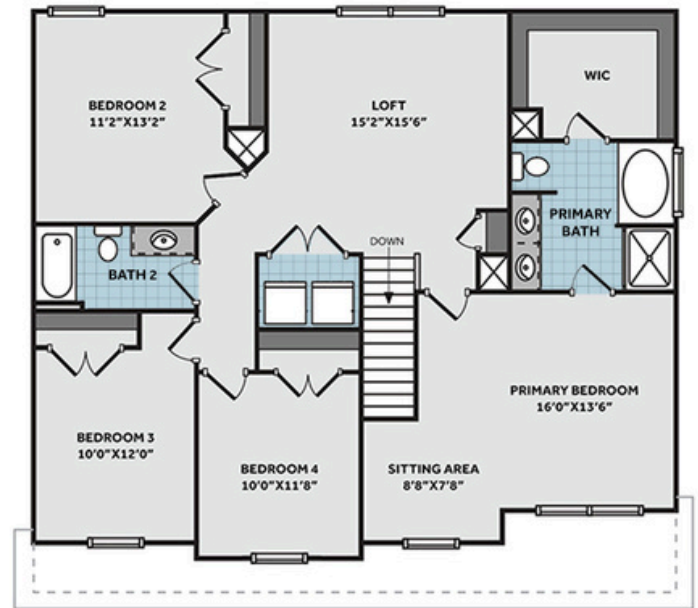
WWW.CAVINESSANDCATES.COM



FIRST FLOOR



SECOND FLOOR



This home features a formal dining room off the foyer, along with a conveniently located coat closet and half-bath. The spacious great room offers a cozy atmosphere, perfect for gathering and relaxing. Overlooking the great room and breakfast area, the kitchen is equipped with granite countertops in "New Caledonia", white shaker cabinets, a corner pantry, and a sink with backyard views. Stainless steel appliances, including a microwave, dishwasher, and smooth-top range, complete the kitchen. Step outside to the grill patio through sliding glass doors in the breakfast area. Upstairs, an open loft area provides additional living space, with a nearby linen closet for storage. The second-floor primary suite features a cozy sitting area and a bathroom with dual sinks with a quartz countertop in "Simply White," white shaker cabinets, a garden tub, a separate shower with tile surround, and access to a spacious walk-in closet. Three additional bedrooms, a full hall bathroom with a tub/shower combo, and a laundry room with washer/dryer connections complete the second floor. Exterior highlights include low-maintenance vinyl siding with shake accents, a stone skirt, dimensional roof shingles, and a charming front porch. The front door, painted in Sherwin Williams "Sea Serpent", features smart keypad entry to the home. Situated on a .49-acre corner lot, this home also offers a 2-car front-loading garage with a work area extension, fiber optic internet service availability, an Energy Plus certification, and a 1-2-10 builder in-house warranty.

KITCHEN

Door Style:
Fairmont



Color:
White



BATHROOM

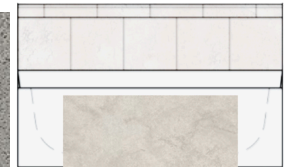
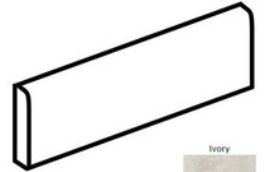
Door Style:
Fairmont



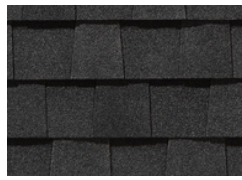
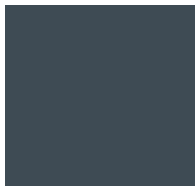
Color:
White



FLOORING



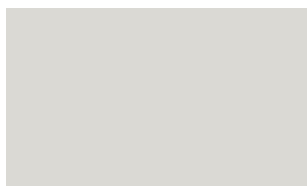
EXTERIOR



LIGHTING



PAINT



KITCHEN

- Brushed Nickel Brantford Kitchen Sink Fixture
- Standard SS 50/50 Double Bowl Sink
- Fairmont White Flat Panel Cabinets w/ Brushed Nickel 6501195 Pulls
- 1/2 Bullnose Edge New Caledonia Granite Countertops
- Standard Kitchen Layout
- Ferguson/Frigidaire Electric Stainless Steel Appliances (Range, Microwave, and Dishwasher)

BATHROOM

- Brantford 4" Spread Chrome Plumbing Package (Whole House)
- Simply White Quartz Countertops w/ Oval Sinks
- Chrome BP9161196180 Pulls
- Fairmont White Flat Panel Cabinets
- Garden Tub and Fiberglass Shower Layout
- ARO4 w/ #93 Fossil Grout on Primary Fiberglass Shower Surround and ARO4 12x12 w/ #93 Fossil Grout Garden Tub Surround
- ARO4 w/ #93 Fossil Grout on Bath #2 Shower Surround

FLOORING

- Optimum Plus - Wild Dunes #7089 LVP in Foyer
- Highlands II 170 Legacy Vinyl in Kitchen/ Breakfast Area, Powder Room, Primary Bath, Bath #2, Laundry
- Graceful Finesse Concrete Carpeting

INTERIOR PAINT & TRIM

- Primary Interior Color Walls & Ceiling: First Star SW7646

LIGHTING

- Seville Brushed Nickel Lighting Package (Whole House)

EXTERIOR

- Paint Grade Smooth, 6-Panel Front Door w/ Smart Keypad Deadbolt
- Front Door Painted: Sea Serpent SW7615
- Moire Black Dimensional Shingles
- Tapered/Stone Base Columns
- Norris Gray - Stack Stone Accent
- Everest Vinyl Body Siding
- English Wedgewood Vinyl Shake Accent
- White Exterior Trim
- Black Board & Batten Shutters
- 4 over 1 White Windows
- White Sonoma Garage Door
- White Gutters
- Sod Location: Front and Sides

DESIGN OPTIONS SUMMARY

STRUCTURAL	BASE PRICE: \$372,051
Elevation C	\$0,000
Optional Garage Storage/Work Area	\$6,820
Grill Patio 10' x 10'	\$1,000

DESIGN CENTER OPTIONS \$2,129

Full View Vinyl 2-Panel Rear Slider
Add Smart Keypad Deadbolt Front Door
Kitchen Level 2 Granite
Stainless Steel Electric Range, Microwave and Dishwasher

TOTAL OPTIONS ADDED \$9,949

TOTAL SALES PRICE: \$382,000