

# EF ELLIOT FARMS

**HOMESITE 73**  
507 Log Pond Road  
Fayetteville, NC

## THE ONSLOW HOMEPLAN

ELEVATION C

1,885 SQFT | 3 BR | 2.5 BA | 3 CAR GARAGE



.268 ACRE

Elliot Farms is a peaceful community conveniently located near multiple metro areas! Situated on the Northside of Fayetteville, Elliot Farms is less than 15 minutes from Fort Bragg gates. Enjoy nearby local attractions like ZipQuest Waterfall & Treetop Adventures and Peaden's Seafood Restaurant. Downtown Fayetteville is just a 20 minutes drive and offers local shopping, restaurants, and attractions like the Fayetteville Woodpeckers Baseball at Segra Stadium, the Special Operations Museum, and the Cape Fear Botanical Garden. Drive North and you can visit downtown Lillington, Raven Rock State Park, and Campbell University in around 25 minutes. This community is just over an hour from the city of Raleigh and the RDU International airport.

**NEW HOME SPECIALISTS**

910.405.8311

[info@cavinessandcates.com](mailto:info@cavinessandcates.com)



Photos, Options,  
Virtual Tours & More



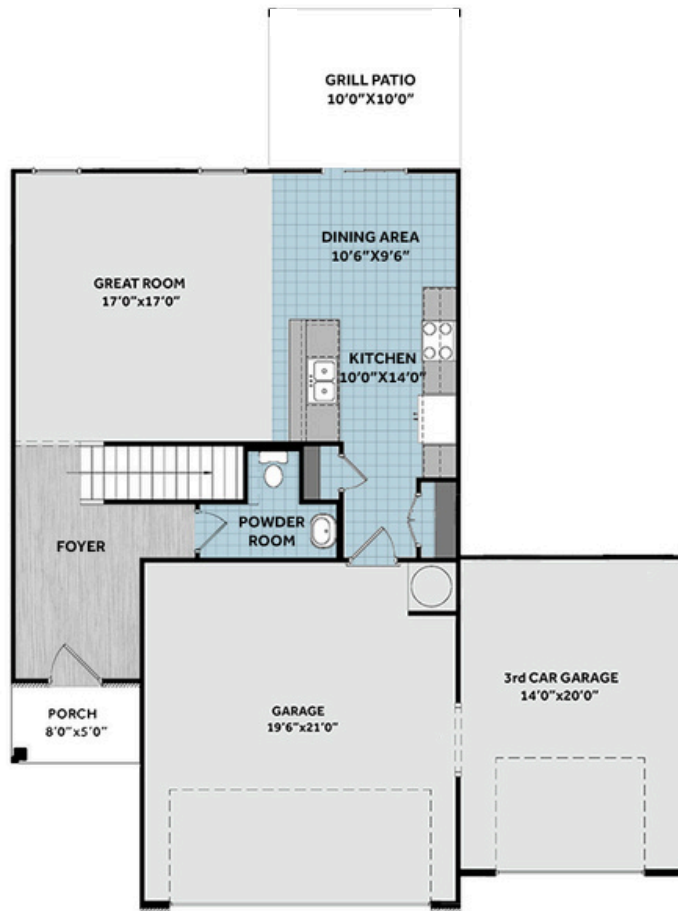
[WWW.CATESBUILDING.COM](http://WWW.CATESBUILDING.COM)



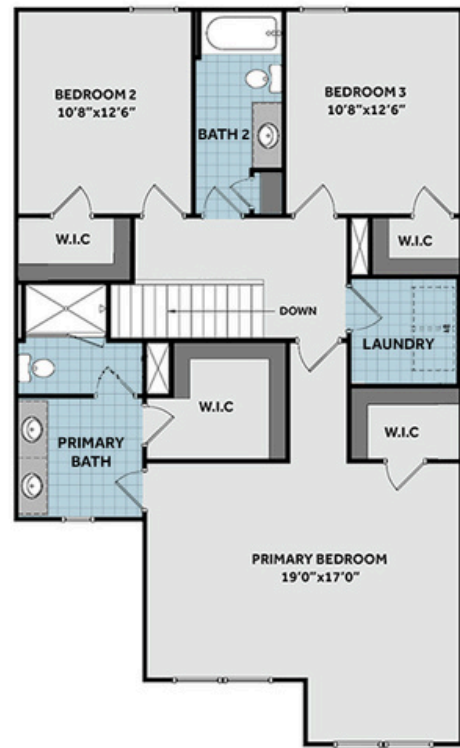
[WWW.CAVINESSANDCATES.COM](http://WWW.CAVINESSANDCATES.COM)



## FIRST FLOOR



## SECOND FLOOR



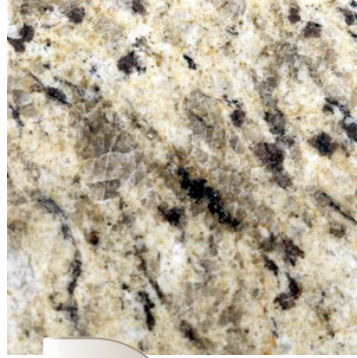
The Onslow home welcomes you with a foyer that provides convenient access to a half-bath before opening into a spacious great room connected to the kitchen and dining area. The kitchen is designed for both style and function, featuring a countertop bar for seating, granite countertops in "Giallo Ornamentale Guidoni", white shaker cabinets, a pantry, and stainless-steel appliances—including a microwave, dishwasher, and smooth-top range. The open dining area extends seamlessly to the grill patio through sliding doors. Upstairs, the primary suite offers two separate walk-in closets and a private bath with a dual sink vanity, a quartz countertop in "Simply White", white shaker cabinets, and a separate shower and toilet area. Two additional bedrooms, each with walk-in closet, share a hall bathroom with a vanity, a tub/shower combination with tile surround, and a linen closet. A dedicated laundry room with washer/dryer connections completes the second floor. Nestled at the end of a cul-de-sac, this home features low-maintenance vinyl siding with shake accents, a stone skirt, and dimensional roof shingles. The front door, painted in Sherwin Williams "Iron Ore", includes smart keypad access for convenience. A spacious three-car front-loading garage provides ample storage. With fiber optic internet service available and Energy Plus certification, this home is built for efficiency and comfort and has 1-2-10-year builder in-house warranty for peace of mind.

**KITCHEN**

Door Style:  
Fairmont



Color:  
White



**BATHROOM**

Door Style:  
Fairmont



Color:  
White



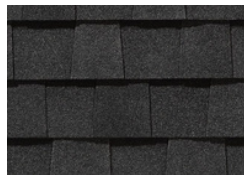
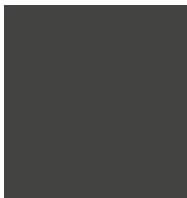
**FLOORING**



Ivory



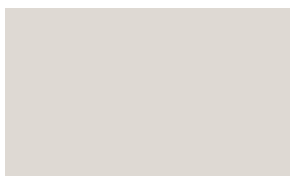
**EXTERIOR**



**LIGHTING**



**PAINT**



## KITCHEN

- Brushed Nickel Brantford Kitchen Sink Fixture
- Standard SS 50/50 Double Bowl Sink
- Fairmont White Flat Panel Cabinets w/ Brushed Nickel BP20576195 Pulls
- 1/2 Bullnose Edge Giallo Ornamental Guidoni Granite Countertops
- Standard Kitchen Layout
- Ferguson/Frigidaire Electric Stainless Steel Appliances (Range, Microwave, and Dishwasher)

## BATHROOM

- Brantford 4" Spread Chrome Plumbing Package (Whole House)
- Simply White Quartz Countertops w/ Oval Sinks
- Chrome BP9161196180 Pulls
- Fairmont White Flat Panel Cabinets
- Primary Bath 36" x 60" Fiberglass Shower
- ARO4 w/ #93 Fossil Grout on Primary Fiberglass Shower Surround
- ARO4 w/ #93 Fossil Grout on Bath #2 Shower Surround

## FLOORING

- Optimum Plus - Driftwood #1056 LVP in Foyer
- Prime #5146 Vinyl in Kitchen/Breakfast Area, Powder Room, Primary Bath, Bath #2, Laundry
- Graceful Finesse Ecru Carpeting

## INTERIOR PAINT & TRIM

- Primary Interior Color Walls & Ceiling: City Loft SW7631

## LIGHTING

- Seville Brushed Nickel Lighting Package (Whole House)

## EXTERIOR

- Paint Grade Smooth, 6-Panel Front Door w/ Smart Keypad Deadbolt
- Front Door Painted: Iron Ore SW7069
- Moire Black Dimensional Shingles
- Tapered/Stone Base Columns
- Norris Gray - Ledgestone Stone Accent
- Sage Vinyl Body Siding
- Scottish Thistle Vinyl Shake Accent
- White Exterior Trim
- Black Board & Batten Shutters
- 4 over 1 White Windows
- White Ranch Garage Door
- White Gutters
- Sod Location: Front and Sides

## DESIGN OPTIONS SUMMARY

## STRUCTURAL

Elevation C

Optional 3rd Car Garage

Grill Patio 10' x 10'

BASE PRICE: \$340,546

\$0,000

\$16,500

\$1,000

## DESIGN CENTER OPTIONS \$854

Add Smart Keypad Deadbolt Front Door

Kitchen Level 2 Granite

Stainless Steel Electric Range, Microwave and Dishwasher

TOTAL OPTIONS ADDED

\$18,354

TOTAL SALES PRICE: \$358,900

Disclaimer: In an effort to continuously improve and develop our products, Caviness & Cates reserves the right to change products, features, pricing, and specifications without prior notice. Features may vary between homes built within the same community. Please see actual home purchase & sale agreement for additional information, disclosures, and disclaimers. Plans are artistic renderings and may not reflect final product. All information on square footage, acreage, and dimensions should be considered approximate. Consult with New Homes Sales Specialist before writing an offer.