

THE WEYMOUTH HOMEPLAN

ELEVATION F

1,854 SQFT | 4 BR | 2 BA | 2 CAR GARAGE w/
WORK AREA



.51 ACRE

Elliot Farms is a peaceful community conveniently located near multiple metro areas! Situated on the Northside of Fayetteville, Elliot Farms is less than 15 minutes from Fort Bragg gates. Enjoy nearby local attractions like ZipQuest Waterfall & Treetop Adventures and Peaden's Seafood Restaurant. Downtown Fayetteville is just a 20 minutes drive and offers local shopping, restaurants, and attractions like the Fayetteville Woodpeckers Baseball at Segra Stadium, the Special Operations Museum, and the Cape Fear Botanical Garden. Drive North and you can visit downtown Lillington, Raven Rock State Park, and Campbell University in around 25 minutes. This community is just over an hour from the city of Raleigh and the RDU International airport.

NEW HOME SPECIALISTS

910.405.8311

info@cavinessandcates.com



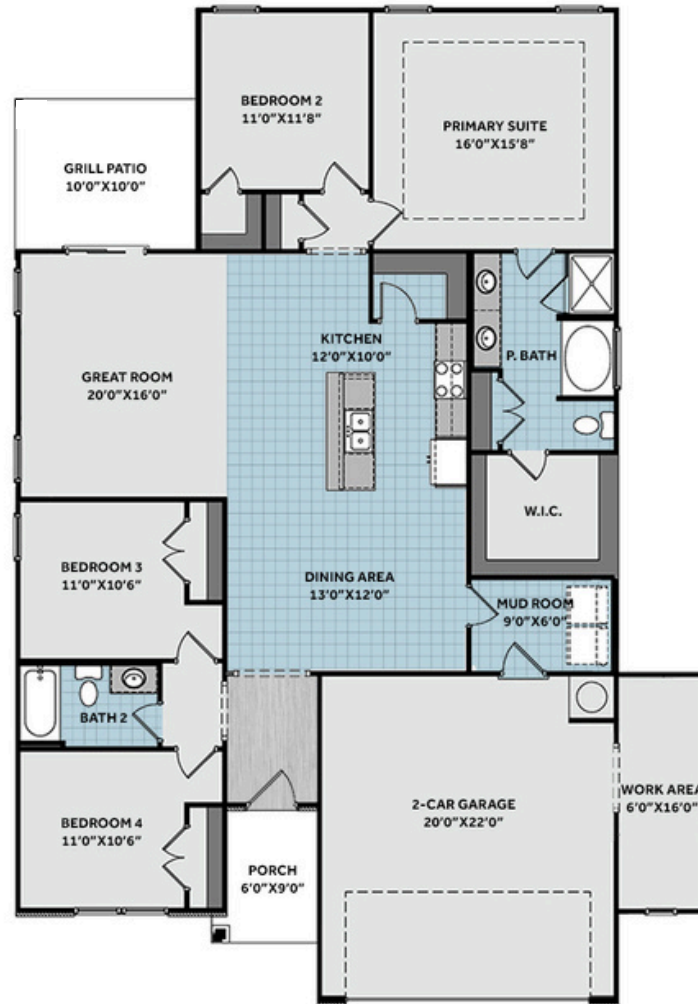
Photos, Options,
Virtual Tours & More



WWW.CATESBUILDING.COM



WWW.CAVINESSANDCATES.COM



The Weymouth home features a spacious great room with sliding glass doors that provide seamless access to the grill patio. Designed for both style and functionality, the open kitchen overlooks the great room and features "Luna Pearl" granite countertops, white shaker cabinets, a corner pantry, a spacious dining area, and a suite of stainless-steel appliances—including a microwave, dishwasher, and smooth top range—for added convenience and elegance. Off the dining area, a mudroom with washer/dryer connections leads to the garage. The expansive primary suite showcases a tray ceiling with crown molding, while the en-suite bathroom features a dual-sink vanity with a "Niagara" quartz countertop, white shaker cabinets, a walk-in fiberglass shower and separate garden tub with tile surround, a linen closet, and a spacious walk-in closet. Two additional bedrooms are located off the foyer, each with hall access to a full bathroom that includes a vanity and a tub/shower combination, while an additional bedroom is situated next to the primary suite. The exterior has low-maintenance vinyl siding with board and batten accents and dimensional roof shingles. The front door, painted in Sherwin Williams "Poinsettia," features smart keypad access to the home for added convenience. Located on a spacious 0.51-acre cul-de-sac lot, this home features a 2-car front-loading garage with a dedicated work area. Additional highlights include Fiber Optic Internet availability, an Energy Plus Certification, and a 1-2-10-year in-house builder warranty for added peace of mind.

KITCHEN

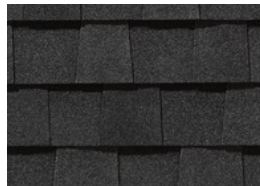
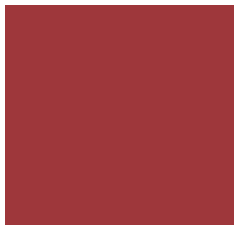
Door Style:
Fairmont



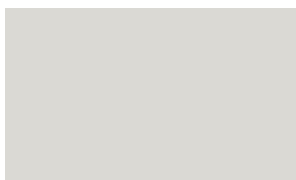
Color:
White



EXTERIOR



PAINT

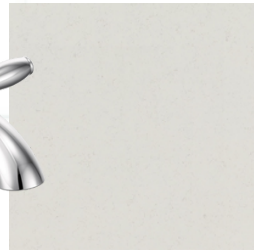


BATHROOM

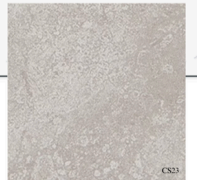
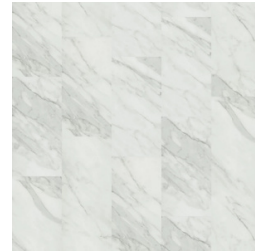
Door Style:
Fairmont



Color:
White



FLOORING



LIGHTING



KITCHEN

- Brushed Nickel Brantford Kitchen Sink Fixture
- Standard SS 50/50 Double Bowl Sink
- Fairmont White Flat Panel Cabinets w/ Brushed Nickel 6501195 Pulls
- 1/2 Bullnose Edge Luna Pearl Granite Countertops
- Standard Kitchen Layout
- Ferguson/Frigidaire Electric Stainless Steel Appliances (Range, Microwave, and Dishwasher)

BATHROOM

- Brantford 4" Spread Chrome Plumbing Package (Whole House)
- Niagara Quartz Countertops w/ Oval Sinks
- Chrome BP9161196180 Pulls
- Fairmont White Flat Panel Cabinets
- Garden Tub and Fiberglass Shower Layout
- CS23 w/ #89 Smoke Gray Grout on Primary Fiberglass Shower Surround and CS23 12x12 w/ #89 Smoke Gray Grout on Garden Tub Surround
- CS23 w/ #89 Smoke Gray Grout on Bath #2 Shower Surround

FLOORING

- Optimum Plus - Lighthouse #5091 LVP in Foyer
- Streamline - Carrara White #1182 Vinyl in Kitchen/Breakfast Area, Primary Bath, Bath #2, Laundry
- Graceful Finesse Concrete Carpeting

INTERIOR PAINT & TRIM

- Primary Interior Color Walls & Ceiling: First Star SW7646
- Tray Ceiling in Primary Suite

LIGHTING

- Seville Brushed Nickel Lighting Package (Whole House)

EXTERIOR

- Paint Grade Smooth, 6-Panel Front Door w/ Smart Keypad Deadbolt
- Front Door Painted: Poinsettia SW6594
- Moire Black Dimensional Shingles
- BandSawn Columns w/ Brackets
- White Vinyl Body Siding
- White Vinyl Board & Batten Accent
- White Exterior Trim
- 4 over 1 White Windows
- White Sonoma Garage Door
- Black Gutters
- Sod Location: Front and Sides

DESIGN OPTIONS SUMMARY

STRUCTURAL

Elevation F

Optional Garage Storage/Work Area

Grill Patio 10' x 10'

BASE PRICE: \$334,728

\$1,750

\$6,820

\$1,000

DESIGN CENTER OPTIONS \$602

Add Smart Keypad Deadbolt Front Door

Stainless Steel Electric Range, Microwave and Dishwasher

TOTAL OPTIONS ADDED

\$10,172

TOTAL SALES PRICE: \$344,900

Disclaimer: In an effort to continuously improve and develop our products, Caviness & Cates reserves the right to change products, features, pricing, and specifications without prior notice. Features may vary between homes built within the same community. Please see actual home purchase & sale agreement for additional information, disclosures, and disclaimers. Plans are artistic renderings and may not reflect final product. All information on square footage, acreage, and dimensions should be considered approximate. Consult with New Homes Sales Specialist before writing an offer.