



TUCKER HILL FARM

HOMESITE 17

2939 Tucker Hill Drive
Grimesland, NC

THE CARVER HOMEPLAN

ELEVATION F

2,152 SQFT | 4 BR | 2 BA | 2 CAR GARAGE
W/ WORK AREA



*Artistic Rendering not lot specific. For representation purposes only.



0.63± ACRE

Discover the charm of Tucker Hill Farm! Nestled just off Tucker Road, this exclusive enclave of only 55 homes offers spacious homesites—some spanning over an acre—giving you room to breathe while staying just 15 minutes from the vibrant shopping, dining, and entertainment of Uptown Greenville.

Here, you'll find expertly designed home plans, superior craftsmanship, and the quality you expect—all backed by the signature Caviness & Cates 1-2-10 year in-house warranty. Escape the hustle and bustle without sacrificing convenience—Tucker Hill Farm is waiting to welcome you home!

NEW HOME SPECIALISTS

910.405.8311

info@cavinessandcates.com



Photos, Options,
Virtual Tours & More

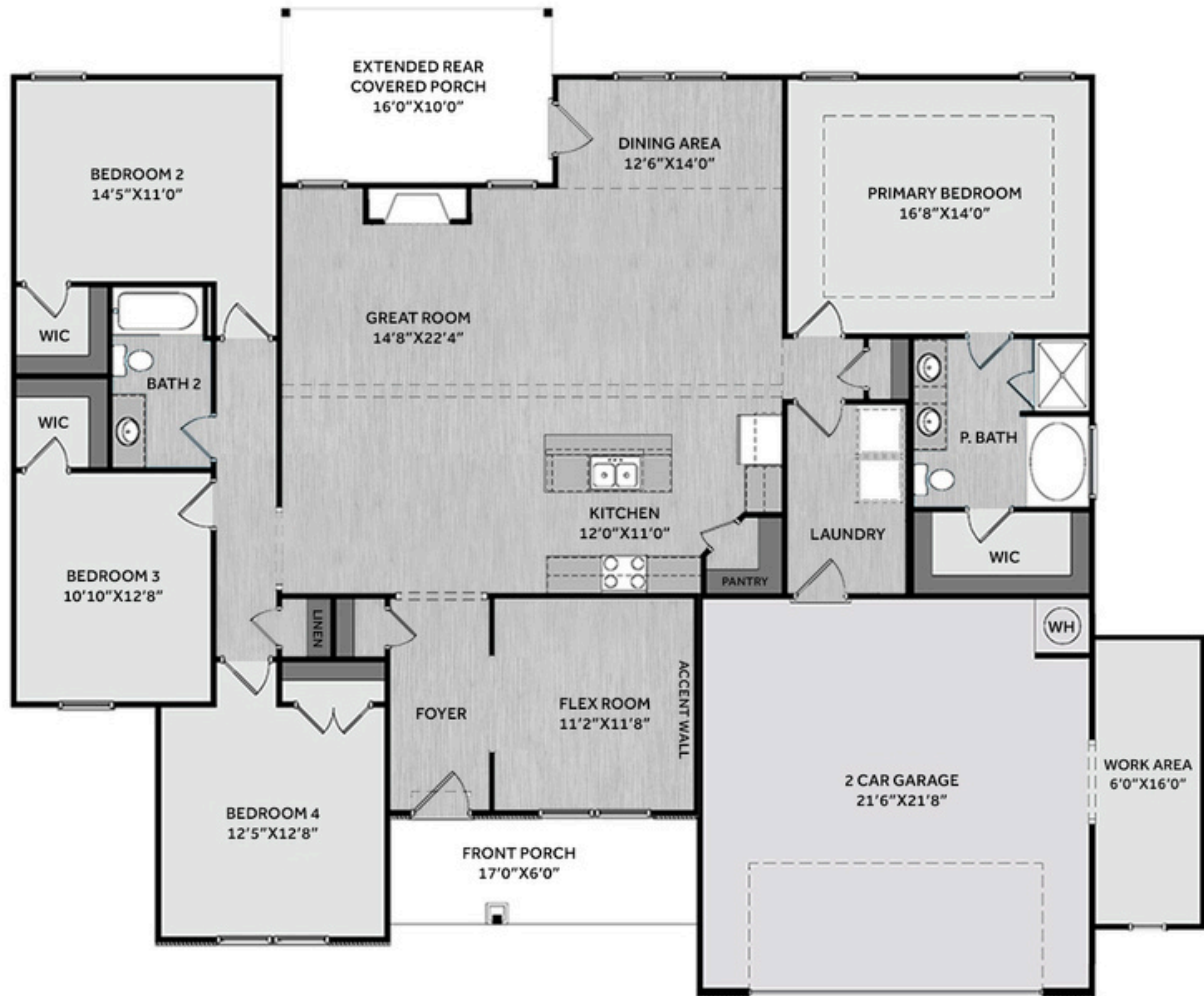
SALES AND MARKETING BY:



TYRE REALTY GROUP



WWW.CAVINESSANDCATES.COM



This thoughtfully designed home features an open great room with a cathedral ceiling, faux beam details, and a gas log fireplace with a decorative mantel and black granite surround. Adjacent is a breakfast area with backyard views and access to an extended rear covered porch—ideal for outdoor living. The kitchen blends style and function with a center island, "Trigato" quartz countertops, white shaker cabinets, white herringbone subway tile backsplash, a corner pantry, and stainless-steel appliances, including a microwave, dishwasher, and gas range. Off the foyer, a versatile flex room showcases an "Iron Ore" accent wall. The primary suite includes a tray ceiling with crown molding, and an en suite bath with a white dual quartz sink vanity with a center drawer stack, walk-in shower, garden tub, and a large walk-in closet. Three additional bedrooms share access to a hall linen closet and a full bathroom with a vanity and a tub/shower combination. A mudroom is conveniently located near the garage entry. Exterior highlights include low-maintenance vinyl siding with board and batten accents, dimensional roof shingles, and a welcoming front porch with a SW "Poinsettia" door with smart keypad entry. This Energy Plus certified home includes a 2-car garage with a work area and a 1-2-10 builder in-house warranty.

KITCHEN



BATHROOM



FLOORING



EXTERIOR



PAINT & TRIM



LIGHTING



KITCHEN

- Brushed Nickel Brantford Kitchen Sink Fixture
- Standard SS 50/50 Double Bowl Sink
- Fairmont White Flat Panel Cabinets w/ Brushed Nickel 6501195 Pulls
- 1/2 Bullnose Edge Trigato Quartz Countertops
- 3x6 Subway Tile - Color Wheel Classic / 3x6 #0190 Arctic White Glossy w/ #44 Bright White Grout - Set in Herringbone Pattern Kitchen Backsplash
- Standard Kitchen Layout w/ 42" Wall Cabinets and 2 1/4" Crown on Kitchen Cabinets
- Frigidaire Natural Gas Stainless Steel Appliances (Dishwasher, Gas Range, and Over-the-Range Microwave)

BATHROOM

- Brantford 4" Spread Brushed Nickel Plumbing Package (Whole House)
- Simply White Quartz Countertops w/ Square Bowls
- Fairmont White Flat Panel Cabinets w/ Brushed Nickel BP9161196195 Pulls
- Primary Bath Adult Height Cabinets and 12" Stack of Drawers to Primary Vanity
- Raised/Elongated Toilets in Primary Bath and Bath #2
- ARO4 w/ #93 Fossil Grout Ceramic Tile Primary Shower Surround and ARO4 12x12 w/ #93 Fossil Grout Ceramic Tile Garden Tub Surround
- ARO4 w/ #93 Fossil Grout on Bath #2 Shower Surround

FLOORING

- Optimum Plus - Driftwood #1056 LVP in Foyer, Great Room, Flex Room, Kitchen/Dining Area, Hall #1, Hall #2, Primary Bath, Bath #2, Laundry
- Graceful Finesse Ecru Carpeting

INTERIOR PAINT & TRIM

- Primary Interior Color Sherwin Williams: City Loft SW7631 w/ Matching Ceiling
- Add Accent Wall Option #1- Painted Square Panel: Iron Ore SW7069 - Flex Room

LIGHTING / ELECTRICAL

- Seville Lighting Package Brushed Nickel (Whole House)
- 2 Feiss Tabby One Light Pendants over Kitchen Island
 - Model: P1308BS
- 4 LED Recess Lights in Kitchen
- 2 Bulb Floodlights on Rear Corners

FIREPLACE

- Gas Fireplace w/ Wescott Mantel and Absolute Black Surround (No Hearth)

EXTERIOR

- 6-Panel Front Door & Transom Package w/ Smart Keypad Deadbolt and Brushed Nickel Handleset
- Front Door Painted: Poinsettia SW6594
- Moire Black Dimensional Shingles
- Band Sawn w/ Brackets Front Columns
- White Vinyl Body Siding
- White Board & Batten Accent
- White Exterior Trim
- 4 over 1 White Windows
- White Bridgeport Steel Narrow Panel Garage Door w/ Spear Style Decorative Hardware
- Black Gutters

DESIGN OPTIONS SUMMARY

STRUCTURAL	BASE PRICE: \$386,500
Optional Elevation F	\$1,750
Optional Garage Storage/Work Area	\$6,820
Optional Extended Rear Covered Porch	\$4,550
Optional Flex Room (No French Doors)	\$0,000
Optional Gas Fireplace on Interior Wall	\$2,310

DESIGN CENTER OPTIONS \$17,970

Brantford 4" Spread Brushed Nickel Plumbing Package (Whole House)
Raised/Elongated Toilet (x1 - Bath #2)
6-Panel Front Door & Transom Package
Kitchen Pendant Lights: Feiss Tabby One Light Pendant - P1308BS (x2- Over Kitchen Island)
Add Recess Light Assembly to Non Standard Location (x4- Kitchen)
Add Two - 2 Bulb Floodlights on Single Switch Circuit (Rear Corners)
Add Smart Keypad Deadbolt Front Door
Add Spear Style Decorative Hardware to Garage Door
Accent Wall Option #1 - Painted Square Panel Accent Wall - Flex Room
Kitchen - Add 42" Wall Cabinets
Add 2 ¼" Crown to Standard Cabinet Layout
Primary Bath - Adult Height Vanity
Add 12" Stack of Drawers to Primary Bath Vanity
Kitchen Level 1 Quartz
Upgrade all Vanity Bowls to Square Bowls
Level 1 Fireplace Mantel
Level 1 Fireplace Surround (No Hearth)
LVP Level 1 - Foyer, Great Room, Flex Room, Kitchen/Dining Area, Hall #1, Hall #2, Primary Bath, Bath #2, Laundry
Kitchen Backsplash: 3x6 Herringbone Tile - Color Wheel Classic
Upgrade to Front Door Handleset
Stainless Steel Gas Range, Microwave and Dishwasher

TOTAL OPTIONS ADDED	\$33,400
TOTAL SALES PRICE: \$419,900	

Disclaimer: In an effort to continuously improve and develop our products, Caviness & Cates reserves the right to change products, features, pricing, and specifications without prior notice. Features may vary between homes built within the same community. Please see actual home purchase & sale agreement for additional information, disclosures, and disclaimers. Plans are artistic renderings and may not reflect final product. All information on square footage, acreage, and dimensions should be considered approximate. Consult with New Homes Sales Specialist before writing an offer.