



# TUCKER HILL FARM

## HOMESITE 55

2812 Tucker Hill Drive  
Grimesland, NC

### THE CAMBRIDGE HOMEPLAN

ELEVATION FH

2,432 SQFT | 4 BR | 3 BA | 3 CAR GARAGE



\*Artistic Rendering not lot specific.  
For representation purposes only.



0.93 ACRE

Discover the charm of Tucker Hill Farm! Nestled just off Tucker Road, this exclusive enclave of only 55 homes offers spacious homesites—some spanning over an acre—giving you room to breathe while staying just 15 minutes from the vibrant shopping, dining, and entertainment of Uptown Greenville.

Here, you'll find expertly designed home plans, superior craftsmanship, and the quality you expect—all backed by the signature Caviness & Cates 1-2-10 year in-house warranty. Escape the hustle and bustle without sacrificing convenience—Tucker Hill Farm is waiting to welcome you home!

### NEW HOME SPECIALISTS

910.405.8311

[info@cavinessandcates.com](mailto:info@cavinessandcates.com)



Photos, Options,  
Virtual Tours & More

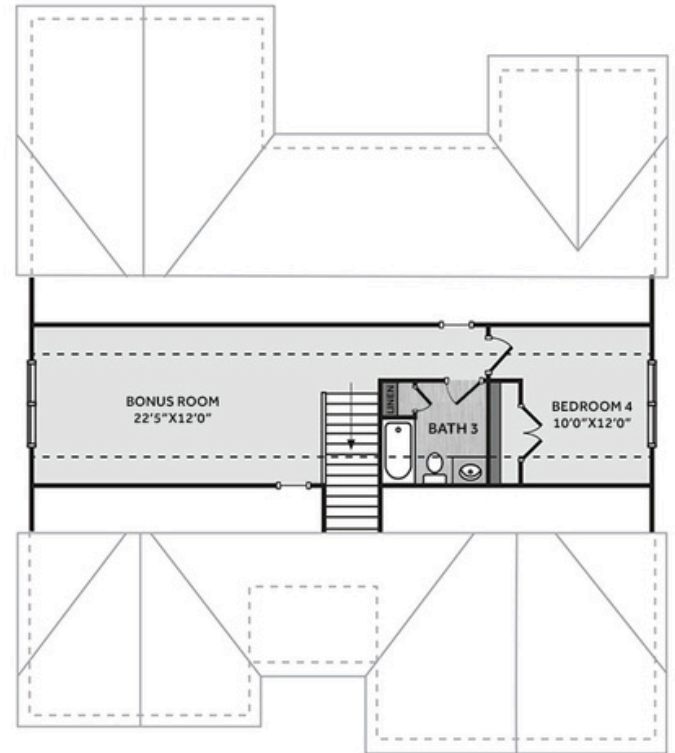
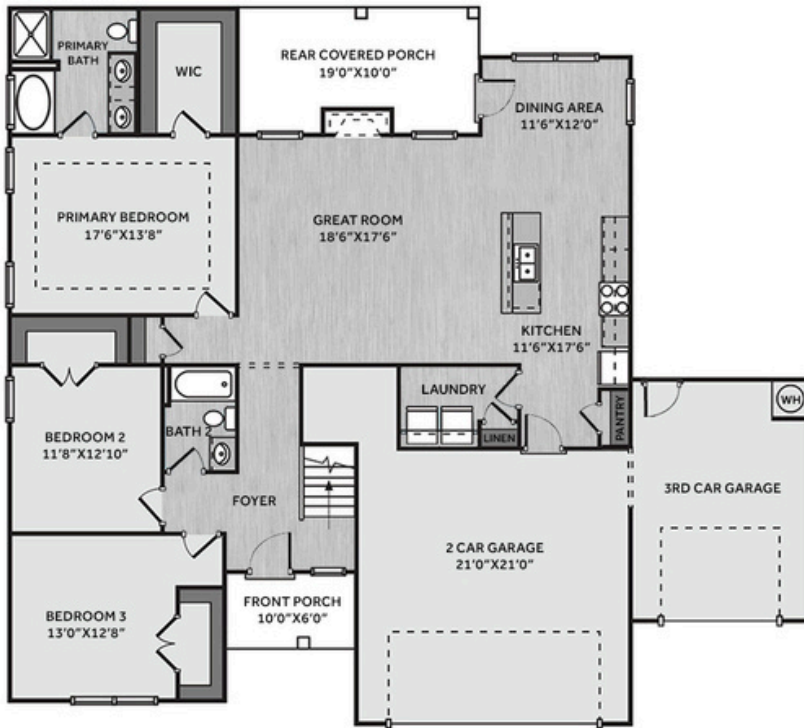
SALES AND MARKETING BY:



TYRE REALTY GROUP



[WWW.CAVINESSANDCATES.COM](http://WWW.CAVINESSANDCATES.COM)



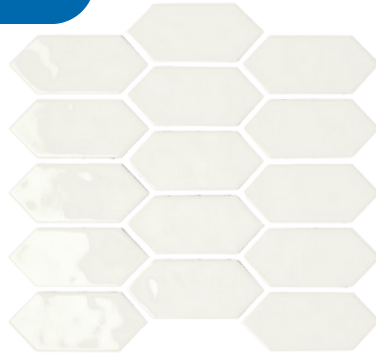
Step into the foyer that opens to a spacious great room featuring a gas log fireplace with black granite surround and a mantel. The open kitchen features an island with a sink overlooking the great room, "New Willow White" quartz countertops, white shaker cabinets, tile backsplash, pantry, stainless steel appliances, flowing into the dining area with rear-covered porch access. The first-floor primary suite boasts a tray ceiling with crown molding, while the ensuite bathroom includes a dual quartz sink vanity with a center drawer stack, garden tub, walk-in shower, and a walk-in closet. Two additional first-floor bedrooms have walk-in closets and share a full hall bathroom with a vanity and tub/shower combination. Conveniently located in the garage entry, the laundry room includes a linen closet. Upstairs, a fourth bedroom, bonus room, and full bathroom with a linen closet, provide extra living space. Exterior highlights include low-maintenance vinyl siding with board and batten accents, dimensional roof shingles, dormer, and front door painted in SW "Black Magic" with smart keypad entry. This Energy Plus certified home also features a 3-car garage with a pedestrian door, and a 1-2-10 builder in-house warranty.

## KITCHEN

Door Style:  
Fairmont

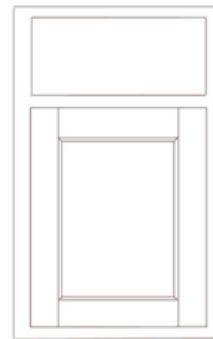


Color:  
White



## BATHROOM

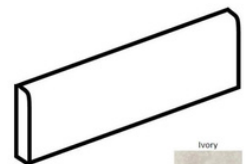
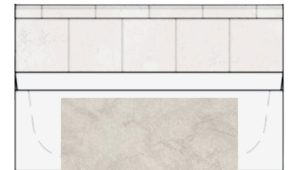
Door Style:  
Fairmont



Color:  
White



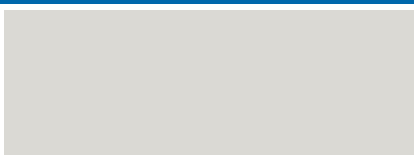
## FLOORING



## EXTERIOR



## PAINT



## LIGHTING



## KITCHEN

- Brushed Nickel Brantford Kitchen Sink Fixture
- Standard SS 50/50 Double Bowl Sink
- Fairmont White Flat Panel Cabinets w/ Matte Black BP20576-900 Pulls
- 1/2 Bullnose Edge New Willow White Quartz Countertops
- 2x5 Horizontal Pickets - Mythology / MY90 Pickets w/ #44 Bright White Grout Kitchen Backsplash
- Standard Kitchen Layout w/ 42" Wall Cabinets and 2 1/4" Crown on Kitchen Cabinets
- Frigidaire Gas Stainless Steel Appliances (Dishwasher, Gas Range, and Over-the-Range Microwave)

## BATHROOM

- Brantford 4" Spread Brushed Nickel Plumbing Package (Whole House)
- Niagara Quartz Countertops w/ Square Bowls
- Fairmont White Flat Panel Cabinets w/ Brushed Nickel BP9161196195 Pulls
- Primary Bath Adult Height Cabinets and 12" Stack of Drawers to Primary Vanity
- Raised/Elongated Toilets in Primary Bath, Bath #2, Bath #3
- ARO4 w/ #93 Fossil Grout Ceramic Tile Primary Shower Surround and ARO4 12x12 w/ #93 Fossil Grout Ceramic Tile Garden Tub Surround
- ARO4 w/ #93 Fossil Grout on Bath #2 and Bath #3 Shower Surround

## FLOORING

- Optimum Plus - Lighthouse #5091 LVP in Foyer, Great Room, Kitchen/Dining Area, Hall #1, Hall #2, Primary Bath, Bath #2, Bath #3, Laundry
- Graceful Finesse Concrete Carpeting

## INTERIOR PAINT & TRIM

- Primary Interior Color Sherwin Williams: First Star SW7646 w/ Matching Ceiling
- Kneewall on Stairs

## LIGHTING / ELECTRICAL

- Seville Lighting Package Brushed Nickel (Whole House)
- 2 Dianna Three Light Mini Lantern Pendants over Kitchen Island
  - Model: 5192603-112
- 4 LED Recess Lights in Kitchen
- 2 Bulb Floodlights on Rear Corners

## FIREPLACE

- Gas Fireplace w/ Wescott Mantel and Absolute Black Surround (No Hearth)

## EXTERIOR

- 6-Panel Front Door & Transom Package w/ Smart Keypad Deadbolt and Brushed Nickel Handleset
- Front Door Painted: Black Magic SW6991
- Moire Black Dimensional Shingles
- Band Sawn w/ Brackets Front Columns
- White Vinyl Body Siding
- White Board & Batten Accent
- White Exterior Trim
- 4 over 1 White Windows
- White Gallery Steel Long Panel Garage Door w/ Spear Style Decorative Hardware
- Black Gutters

## DESIGN OPTIONS SUMMARY

## STRUCTURAL

BASE PRICE: \$370,765

Optional Elevation FH w/ Dormer	\$6,410
Optional 3 <sup>rd</sup> Car Garage	\$16,500
Optional Rear Covered Porch - Plan Specific Sizing	\$13,200
Optional Gas Fireplace on Interior Wall	\$2,310
Add 6-Panel Steel Garage Pedestrian Door - Includes Coach Light & 3'x3' Concrete Stoop	\$1,111

## DESIGN CENTER OPTIONS \$16,577

Brantford 4" Spread Brushed Nickel Plumbing Package (Whole House)  
Raised/Elongated Toilet (x2 - Bath #2, Bath #3)  
6-Panel Front Door & Transom Package  
Kitchen Pendant Lights: Dianna Three Light Mini Lantern - 5192603-112 (x2-  
Over Kitchen Island)  
Add Recess Light Assembly to Non Standard Location (x4- Kitchen)  
Add Two - 2 Bulb Floodlights on Single Switch Circuit (Rear Corners)  
Add Smart Keypad Deadbolt Front Door  
Add Spear Style Decorative Hardware to Garage Doors (x2)  
Kitchen - Add 42" Wall Cabinets  
Add 2 ¼" Crown to Standard Cabinet Layout  
Primary Bath - Adult Height Vanity  
Add 12" Stack of Drawers to Primary Bath Vanity  
Kitchen Level 1 Quartz  
Upgrade all Vanity Bowls to Square Bowls  
Level 1 Fireplace Mantel  
Level 1 Fireplace Surround (No Hearth)  
LVP Level 1 - Foyer, Great Room, Kitchen/Dining Area, Hall #1, Hall #2,  
Primary Bath, Bath #2, Bath #3, Laundry  
Kitchen Backsplash: 2x5 Horizontal Pickets - Mythology  
Upgrade to Front Door Handleset  
Stainless Steel Gas Range, Microwave and Dishwasher

TOTAL OPTIONS ADDED \$56,108

TOTAL SALES PRICE: \$426,873

Disclaimer: In an effort to continuously improve and develop our products, Caviness & Cates reserves the right to change products, features, pricing, and specifications without prior notice. Features may vary between homes built within the same community. Please see actual home purchase & sale agreement for additional information, disclosures, and disclaimers. Plans are artistic renderings and may not reflect final product. All information on square footage, acreage, and dimensions should be considered approximate. Consult with New Homes Sales Specialist before writing an offer.