

# Brookstone Village

## HOMESITE 114

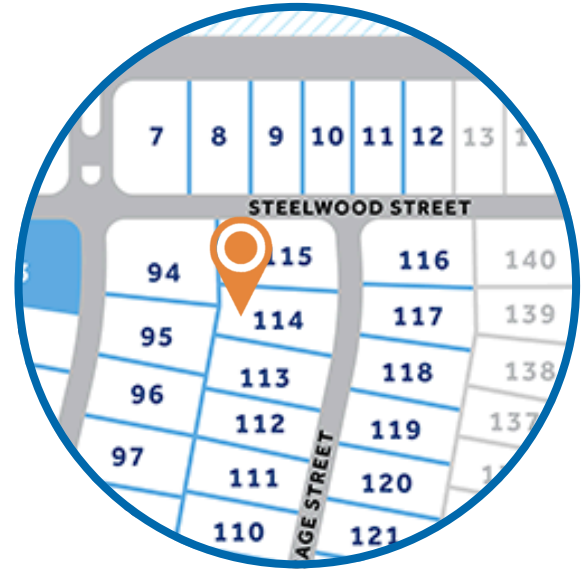
128 Meadow Sage Street  
Raeford, NC

### THE DAVIE HOMEPLAN

ELEVATION F

1,584 SQFT | 3 BR | 2 BA | 1 CAR GARAGE

**\$299,900**



.189 ACRE

Find your place to call home in Brookstone Village! This gated community is in a prime location just off HWY 401 in the Raeford area, minutes from every resource and activity! Just around the corner, you will find First Health Moore Regional Hospital and First Health Convenient Care. Find fitness opportunities at Fit4Life Health Club and CrossFit Raeford. Try indoor Skydiving at Paraclete XP, let the kids jump and explore at JP's Jump Masters indoor trampoline park, or get the family together at the local Round-A-Bout Skating Center! You are also just down the road from multiple grocery stores, shopping centers, and restaurants.

### NEW HOME SPECIALISTS

910.405.8311

info@cavinessandcates.com



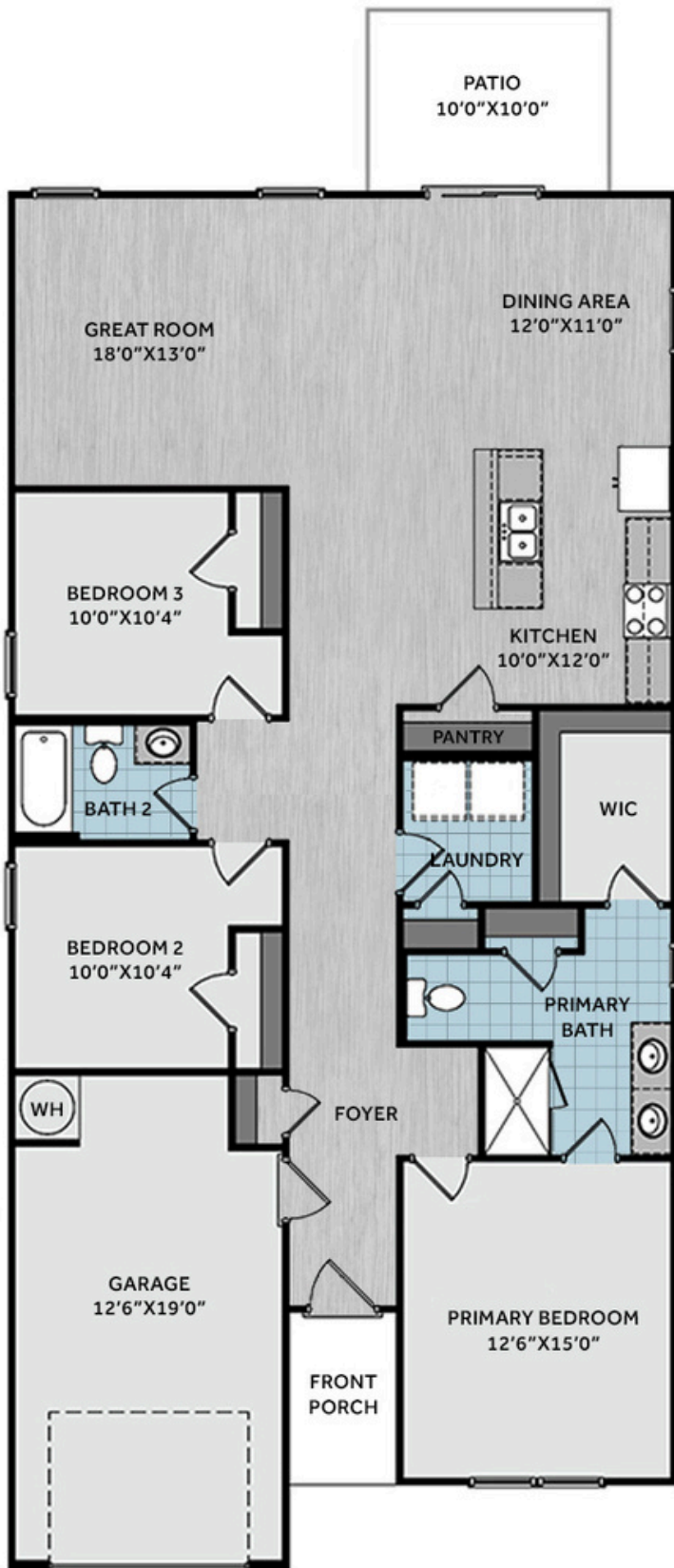
Photos, Options,  
Virtual Tours & More



WWW.CATESBUILDING.COM



WWW.CAVINESSANDCATES.COM



This thoughtfully designed ranch-style home offers easy one-level living with smart features and flexible spaces for everyday comfort. A welcoming entryway with a coat closet opens into a spacious great room, perfect for gathering and relaxing. The kitchen blends style and function with white shaker cabinets, "Azul Platino" granite countertops, a pantry, stainless steel appliances—including microwave, dishwasher, and smooth-top range—and a center island with sink, flowing seamlessly into the dining area with backyard views and access to a grill patio for easy indoor-outdoor living. The private primary suite provides a peaceful retreat with an en-suite bathroom featuring a dual quartz sink vanity, walk-in shower, linen closet, and walk-in closet. Two additional bedrooms share a full hall bath with a vanity and tub/shower combo, perfect for guests or family. A separate laundry room with washer/dryer connections and a linen closet adds convenience. Exterior highlights include low-maintenance vinyl siding, board and batten accents, dimensional roof shingles, smart keypad entry, and a 1-car garage. Additional features include fiber optic internet availability, Energy Plus certification, and a 1-2-10 builder in-house warranty.

## KITCHEN



## BATHROOM



## FLOORING



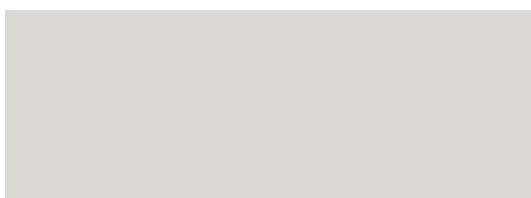
## EXTERIOR



## LIGHTING



## PAINT



## APPLIANCES





## KITCHEN

- Moen Method One-Handle Pullout Kitchen Faucet in a Spot Resist™ Stainless Finish
- Standard Stainless Steel 50/50 Double Bowl Sink
- NexGen Shaker White Flat Panel Cabinets w/ BP20576195 Brushed Nickel Pulls
- Soft Close Hinges on Cabinet Doors
- 1/2 Bullnose Azul Platino Granite Countertops w/ 4" Splash
- Frigidaire Electric Stainless Steel Appliances
  - 30" Electric Range with EvenTemp™ - FCRE3062AS
  - 1.8 Cu. Ft. Over-The-Range Microwave - FMOS1846BS
  - 24" Built-In Tall Tub Dishwasher - FDPC4314AS

## BATHROOM

- Moen Chateau Chrome Plumbing Package (Whole House)
- Frost White Quartz Countertops w/ Square Bowls
- NexGen Shaker White Flat Panel Cabinets w/ BP20576195 Brushed Nickel Pulls
- Soft Close Hinges on Cabinet Doors
- Adult Height Cabinets in Primary Bath & Bath #2
- Raised/Elongated ADA Gerber Maxwell Toilet in Primary Bath & Gerber Maxwell Round Bowl Toilet in Bath #2

## FLOORING

- Shaw Optimum Plus - Driftwood #1056 LVP in Foyer, Great Room, Kitchen / Dining Area
- Shaw Streamline - Carrara White #1182 Vinyl in Primary Bath, Bath #2, Laundry
- Shaw Graceful Finesse Concrete Carpeting in Primary Bedroom/WIC, Bedroom #2, Bedroom #3

## INTERIOR PAINT & TRIM

- Sherwin Williams Flat Primary Interior Color: First Star SW7646 w/ White Ceilings
- Embark Trim Package w/ 3 ¼" Baseboard and 2 ¼" Casings on all Doors

## LIGHTING

- Embark Generation Lighting Package Brushed Nickel
- Kitchen Lighting w/ Traverse Mirage Fixtures
- Great Room & Primary Bedroom include a Brushed Nickel Designer Ceiling Fan w/ Light Kit
  - Linden 52" Traditional Ceiling Fan - 5LD52BSD

## EXTERIOR

- 6-Panel Front Door w/ Smart Keypad Deadbolt
- Front Door Painted: Cyberspace SW7076
- Moire Black Dimensional Shingles
- Everest Vinyl Body Siding
- Brunswick Board & Batten Accent
- White Exterior Trim
- Black Raised Panel Shutters
- 4 over 1 White Windows
- White Gallery Steel Short Panel Garage Door
- White Gutters on Front of Home