

Brookstone Village

HOMESITE 113

138 Meadow Sage Street
Raeford, NC

THE HARGROVE HOMEPLAN

ELEVATION A

1,536 SQFT | 3 BR | 2 BA | 1 CAR GARAGE



\$299,000



.177 ACRE

Find your place to call home in Brookstone Village! This gated community is in a prime location just off HWY 401 in the Raeford area, minutes from every resource and activity! Just around the corner, you will find First Health Moore Regional Hospital and First Health Convenient Care. Find fitness opportunities at Fit4Life Health Club and CrossFit Raeford. Try indoor Skydiving at Paraclete XP, let the kids jump and explore at JP's Jump Masters indoor trampoline park, or get the family together at the local Round-A-Bout Skating Center! You are also just down the road from multiple grocery stores, shopping centers, and restaurants.

NEW HOME SPECIALISTS

910.405.8311

info@cavinessandcates.com



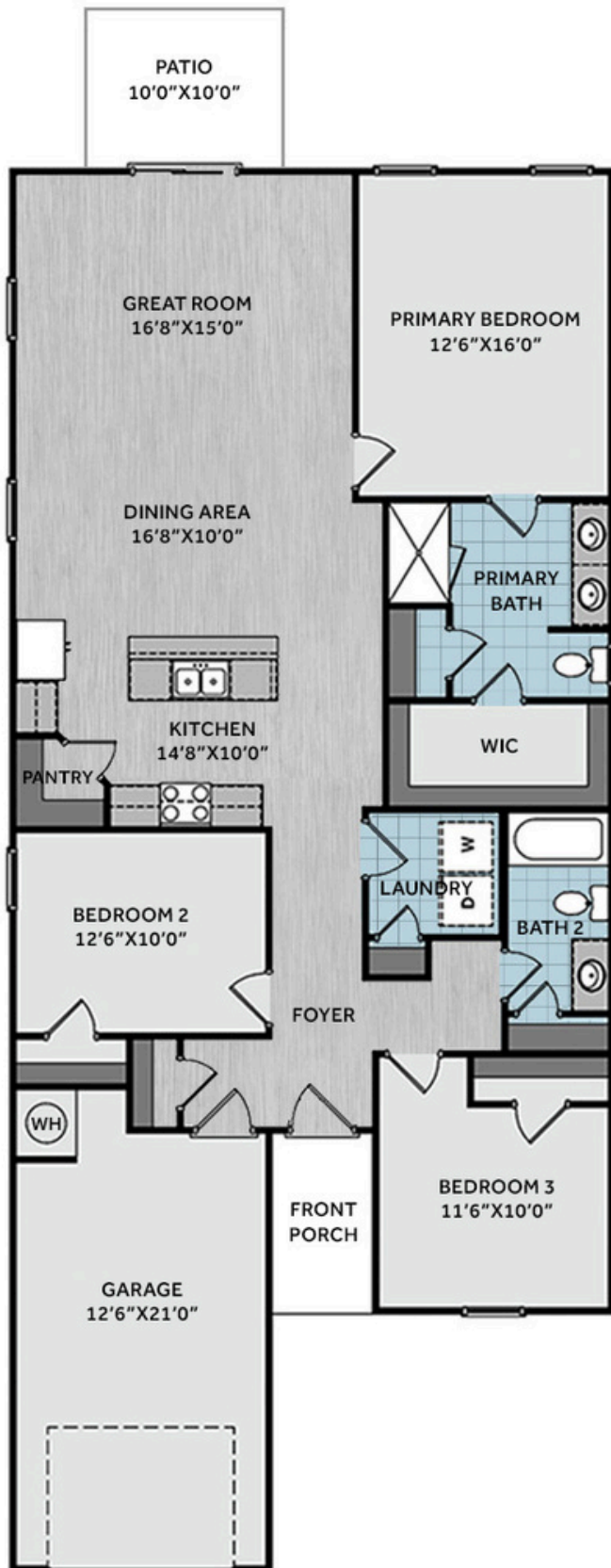
Photos, Options,
Virtual Tours & More



WWW.CATESBUILDING.COM



WWW.CAVINESSANDCATES.COM



This charming ranch-style home offers easy, single-level living with a welcoming foyer, open-concept kitchen, dining, and great room. The kitchen features white shaker cabinets, "New Caledonia" granite countertops, a corner pantry, a center island with sink overlooking the great room, and stainless-steel appliances—including a microwave, dishwasher, and smooth-top range—flowing seamlessly into the dining area, ideal for daily meals or entertaining. The great room opens to a grill patio for seamless indoor/outdoor living. The private primary suite is a restful retreat, while the ensuite bathroom offers a dual quartz sink vanity, a walk-in shower, a linen closet, and access to a spacious walk-in closet. Two additional bedrooms off the foyer share a full hall bathroom with a vanity and tub/shower combo. A separate laundry room with washer/dryer connections and a linen closet adds convenience. Garage access off foyer with a coat closet nearby. Exterior highlights include low-maintenance vinyl siding, shake accents, dimensional roof shingles, smart keypad entry, and a 1-car garage. Additional features include fiber optic internet availability, Energy Plus certification, and a 1-2-10 builder in-house warranty.

KITCHEN



BATHROOM



FLOORING



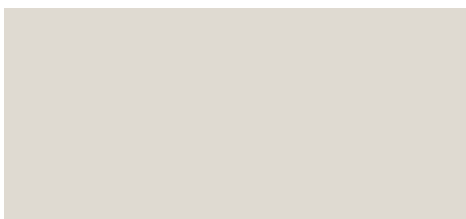
EXTERIOR



LIGHTING



PAINT



APPLIANCES





THE HARGROVE HOMEPLAN

LOT 113 | ELEVATION A
1,536 SQFT | 3 BR | 2 BA | 1 CAR GARAGE

KITCHEN

- Moen Method One-Handle Pullout Kitchen Faucet in a Spot Resist™ Stainless Finish
- Standard Stainless Steel 50/50 Double Bowl Sink
- NexGen Shaker White Flat Panel Cabinets w/ BP20576195 Brushed Nickel Pulls
- Soft Close Hinges on Cabinet Doors
- 1/2 Bullnose New Caledonia Granite Countertops w/ 4" Splash
- Frigidaire Electric Stainless Steel Appliances
 - 30" Electric Range with EvenTemp™ - FCRE3062AS
 - 1.8 Cu. Ft. Over-The-Range Microwave - FMOS1846BS
 - 24" Built-In Tall Tub Dishwasher - FDPC4314AS

BATHROOM

- Moen Chateau Chrome Plumbing Package (Whole House)
- Arctic White Quartz Countertops w/ Square Bowls
- NexGen Shaker White Flat Panel Cabinets w/ BP20576195 Brushed Nickel Pulls
- Soft Close Hinges on Cabinet Doors
- Adult Height Cabinets in Primary Bath & Bath #2
- Raised/Elongated ADA Gerber Maxwell Toilet in Primary Bath & Gerber Maxwell Round Bowl Toilet in Bath #2

FLOORING

- Shaw Optimum Plus - Lighthouse #5091 LVP in Foyer, Great Room, Kitchen / Dining Area
- Shaw Origins - Prime #5146 Vinyl in Primary Bath, Bath #2, Laundry
- Shaw Graceful Finesse Ecru Carpeting in Primary Bedroom/WIC, Bedroom #2, Bedroom #3

INTERIOR PAINT & TRIM

- Sherwin Williams Flat Primary Interior Color: City Loft SW7631 w/ White Ceilings
- Embark Trim Package w/ 3 ¼" Baseboard and 2 ¼" Casings on all Doors

LIGHTING

- Embark Generation Lighting Package Brushed Nickel
- Kitchen Lighting w/ Traverse Mirage Fixtures
- Great Room & Primary Bedroom include a Brushed Nickel Designer Ceiling Fan w/ Light Kit
 - Linden 52" Traditional Ceiling Fan - 5LD52BSD

EXTERIOR

- 6-Panel Front Door w/ Smart Keypad Deadbolt
- Front Door Painted: Pewter Green SW6208
- Moire Black Dimensional Shingles
- Sage Vinyl Body Siding
- Alpine Forest Shake Accent
- White Exterior Trim
- Black Raised Panel Shutters
- 6 over 6 White Windows
- White Bridgeport Steel Narrow Panel Garage Door
- White Gutters on Front of Home

Disclaimer: In an effort to continuously improve and develop our products, Caviness & Cates reserves the right to change products, features, pricing, and specifications without prior notice. Features may vary between homes built within the same community. Please see actual home purchase & sale agreement for additional information, disclosures, and disclaimers. Plans are artistic renderings and may not reflect final product. All information on square footage, acreage, and dimensions should be considered approximate. Consult with New Homes Sales Specialist before writing an offer.

