



**DUCKS LANDING**

**HOMESITE 75**

482 Black Duck Lane  
Lillington, NC

## THE ONSLOW HOMEPLAN

ELEVATION F

1,885 SQFT | 3 BR | 2.5 BA | 2 CAR GARAGE



**\$352,900**



**.55 ACRE**

\*Artistic Rendering not lot specific. For representation purposes only.

Nestled in the serene countryside of Lillington, North Carolina, just off Darroch Road, Duck's Landing offers the fresh, clean air of a rural location, along with the necessities and conveniences of modern life. Local attractions, like the charming downtown Lillington Square, are just a short drive away, offering unique shops, delicious local eateries, and community events that foster a strong sense of belonging. The Cape Fear River, a local treasure, provides opportunities for kayaking, fishing, and scenic walks, inviting residents to connect with nature.

For those connected to the military, the community's proximity to Fort Bragg is a significant advantage, offering an easy commute for service members and their families. This accessibility balances the peaceful rural lifestyle with the demands of military life.

**NEW HOME SPECIALISTS**

910.405.8311

info@cavinessandcates.com



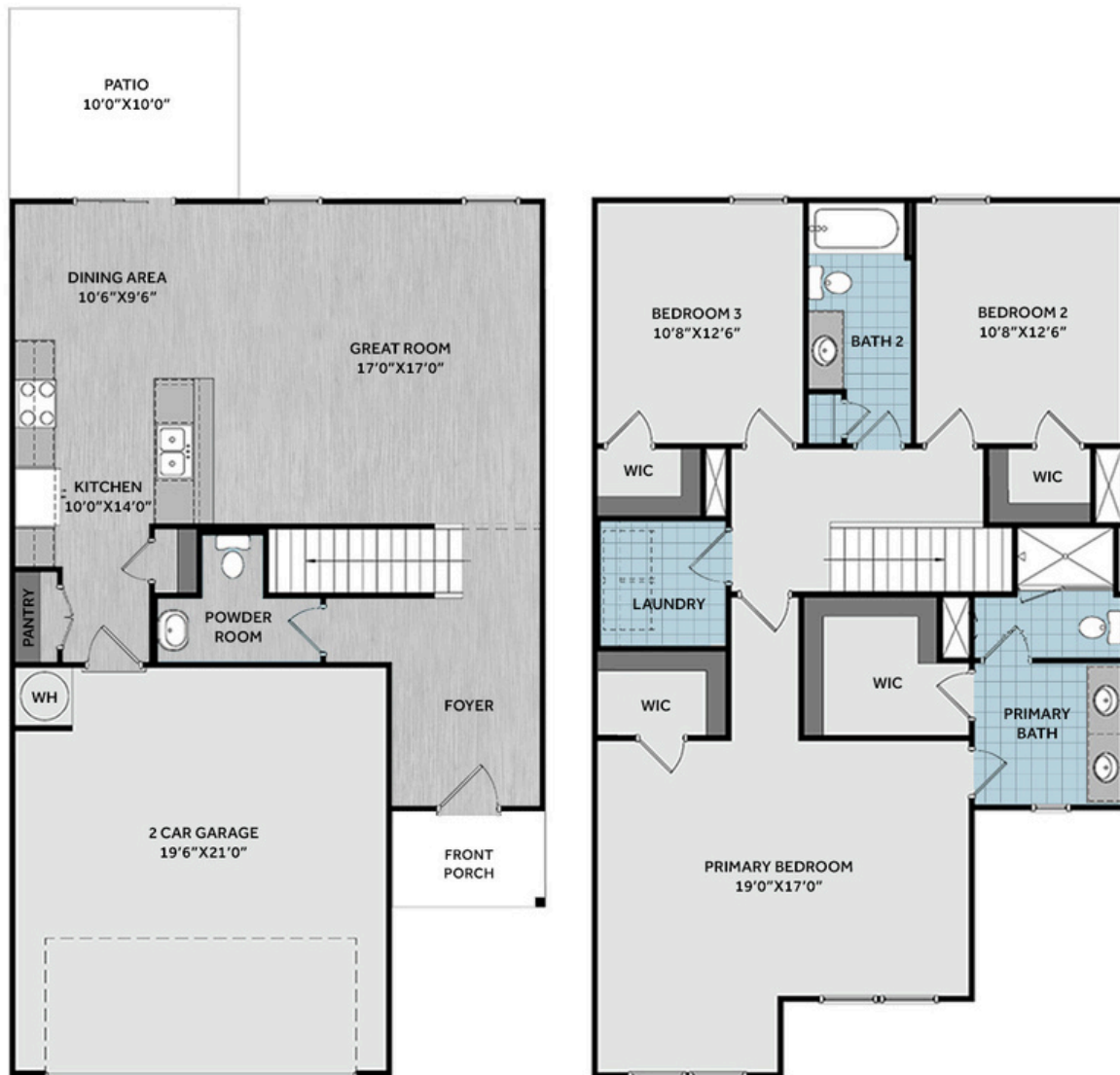
Photos, Options,  
Virtual Tours & More



WWW.CATESBUILDING.COM



WWW.CAVINESSANDCATES.COM

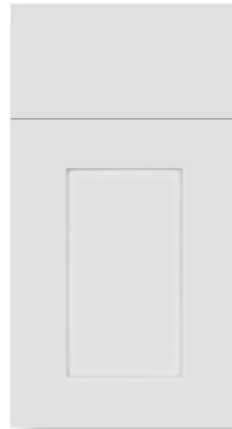


Situated on a .55-acre lot, this home welcomes you with a foyer that includes access to a convenient half-bath, and flows seamlessly into a spacious great room that opens to the kitchen and dining area. The kitchen is equipped with countertop bar seating, granite countertops, shaker cabinets, a pantry, and stainless steel appliances. The dining area opens up to a rear grill patio through sliding doors, creating an ideal space for indoor-outdoor living. The second floor boasts a primary suite with two separate walk-in closets and an ensuite bathroom with a dual sink vanity, and a private shower and toilet area. There are two additional bedrooms with walk-in closets, a hall bathroom with a vanity and tub/shower combination, a linen closet, and a laundry room. The home has low-maintenance vinyl siding, dimensional roof shingles, and a 2-car garage. Fiber optic internet service is available and the home is Energy Plus certified with a 1-2-10-year builder in-house warranty.

## KITCHEN



## BATHROOM



## FLOORING



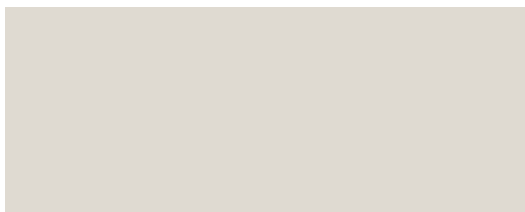
## EXTERIOR



## LIGHTING



## PAINT



## APPLIANCES



## KITCHEN

- Moen Method One-Handle Pullout Kitchen Faucet in a Spot Resist™ Stainless Finish
- Standard Stainless Steel 50/50 Double Bowl Sink
- NexGen Shaker White Flat Panel Cabinets w/ BP20576195 Brushed Nickel Pulls
- Soft Close Hinges on Cabinet Doors
- 1/2 Bullnose Giallo Ornamental Granite Countertops w/ 4" Splash
- Frigidaire Electric Stainless Steel Appliances
  - 30" Electric Range with EvenTemp™ - FCRE3062AS
  - 1.8 Cu. Ft. Over-The-Range Microwave - FMOS1846BS
  - 24" Built-In Tall Tub Dishwasher - FDPC4314AS

## BATHROOM

- Moen Chateau Chrome Plumbing Package (Whole House)
- Frost White Quartz Countertops w/ Square Bowls
- NexGen Shaker White Flat Panel Cabinets w/ BP20576195 Brushed Nickel Pulls
- Soft Close Hinges on Cabinet Doors
- Adult Height Cabinets in Primary Bath & Bath #2
- Raised/Elongated ADA Gerber Maxwell Toilet in Primary Bath & Gerber Maxwell Round Bowl Toilet in Powder Room, Bath #2
- Gerber Maxwell Petit Pedestal Sink in Powder Room

## FLOORING

- Shaw Optimum Plus - Wild Dunes #7089 LVP in Foyer, Great Room, Kitchen / Dining Area, Powder Room
- Shaw Origins - Prime #5146 Vinyl in Primary Bath, Bath #2, Laundry
- Shaw Graceful Finesse Ecru Carpeting in Primary Bedroom/WIC, Bedroom #2, Bedroom #3, Stairs

## INTERIOR PAINT & TRIM

- Sherwin Williams Flat Primary Interior Color: City Loft SW7631 w/ White Ceilings
- Embark Trim Package w/ 3 ¼" Baseboard and 2 ¼" Casings on all Doors
- Kneewall on Stairs

## LIGHTING

- Embark Generation Lighting Package Brushed Nickel
- Kitchen Lighting w/ Traverse Mirage Fixtures
- Great Room & Primary Bedroom include a Brushed Nickel Designer Ceiling Fan w/ Light Kit
  - Linden 52" Traditional Ceiling Fan - 5LD52BSD

## EXTERIOR

- 6-Panel Front Door w/ Smart Keypad Deadbolt
- Front Door Painted: Cast Iron SW6202
- Moire Black Dimensional Shingles
- Desert Sand Vinyl Body Siding
- Misty Shadow Board & Batten Accent
- White Exterior Trim
- 4 over 1 White Windows
- White Gallery Steel Short Panel Garage Door
- White Gutters on Front of Home