

# Cypress Lakes Village

**HOMESITE 333**

1712 Man O War Drive  
Hope Mills, NC

## THE DRAYTON HOMEPLAN

ELEVATION E

2,325 SQFT | 4 BR | 2.5 BA | 2 CAR GARAGE



.437 ACRE

Discover the charm of Cypress Lakes, a sought-after community nestled in the peaceful countryside of Gray's Creek. Known for its serene setting, family-friendly atmosphere, and close-knit neighborhood feel, Cypress Lakes offers the perfect balance of quiet country living and convenient access to nearby Fayetteville and Fort Bragg. Residents of this established neighborhood enjoy amenities including a pool and playground. Perfectly situated just 20 minutes from downtown Fayetteville and Fort Bragg, Cypress Lakes offers rural tranquility with easy access to shopping, dining, entertainment, and top-rated schools—making it an exceptional place to call home.

**NEW HOME SPECIALISTS**

910.405.8311

[info@cavinessandcates.com](mailto:info@cavinessandcates.com)

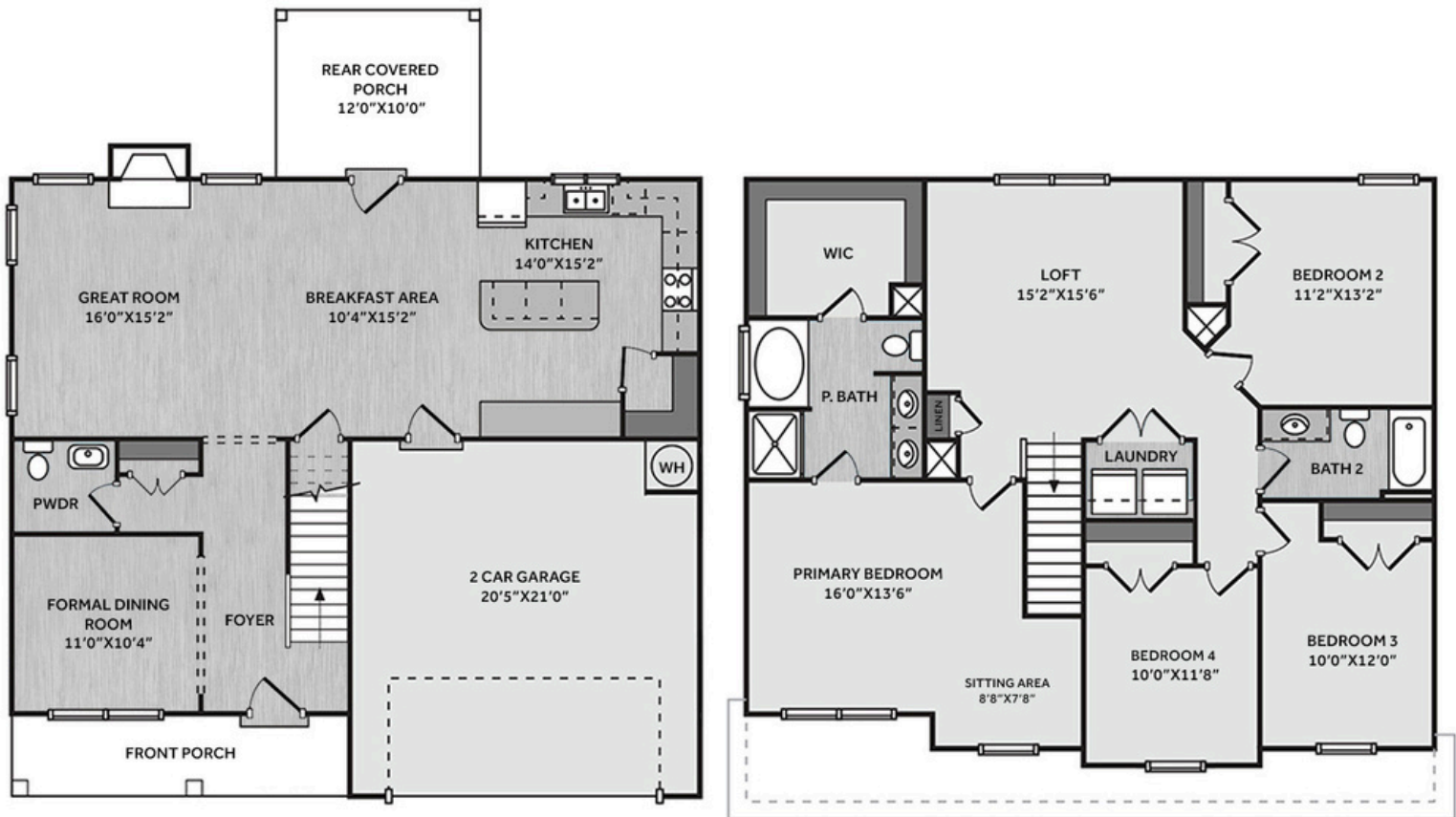


Photos, Options,  
Virtual Tours & More

SALES AND MARKETING BY:



Builder's Marketing Group  
[WWW.CAVINESSANDCATES.COM](http://WWW.CAVINESSANDCATES.COM)



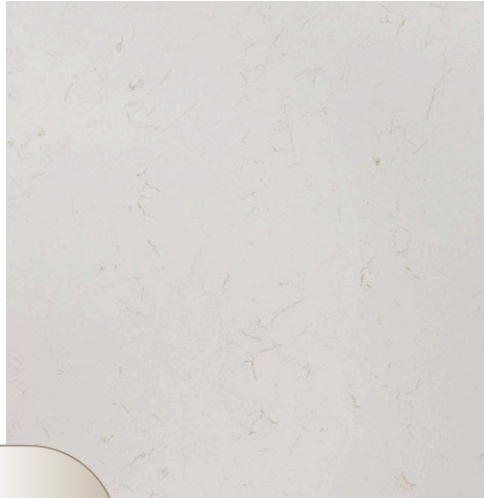
Off the foyer is a dining room, along with a coat closet and a convenient half-bath. The open great room showcases a gas log fireplace with a mantel and black granite surround and flows into the kitchen, which features a large island stained in "Sahara", "Trigato" quartz countertops, white shaker cabinets, a corner pantry, and stainless-steel appliances including a microwave, dishwasher, and gas range. The breakfast area leads to the covered rear porch. Upstairs, an open loft area provides additional living space, with a nearby linen closet and laundry room. The second-floor primary suite features a cozy sitting area and a bathroom containing a dual quartz sink vanity, garden tub, walk-in shower, and spacious walk-in closet. Three additional bedrooms and a full hall bathroom complete the second floor. Exterior highlights include low-maintenance vinyl siding with board and batten accents, dimensional roof shingles, a spacious front porch, and a SW "Iron Ore" front door with smart keypad entry to the home. This home includes a 2-car garage, fiber optic internet service availability, Energy Plus certification, and a 1-2-10 builder in-house warranty.

## KITCHEN

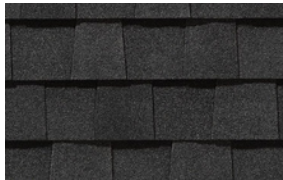
Door Style:  
Fairmont

Color:  
White

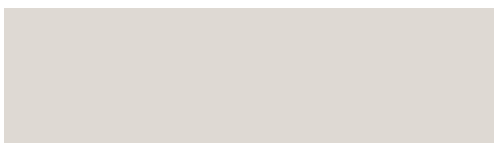
Color:  
Sahara



## EXTERIOR



## PAINT



## BATHROOM

Door Style:  
Fairmont

Color:  
White



## FLOORING



## LIGHTING





## KITCHEN

- Brushed Nickel Brantford Kitchen Sink Fixture
- Standard SS 50/50 Double Bowl Sink
- Fairmont White Flat Panel Cabinets w/ Brushed Nickel 6501195 Pulls
- Fairmont Sahara Accent Kitchen Island
- 1/2 Bullnose Trigato Quartz Countertops w/ 4" Splash
- Standard Kitchen Layout
- Frigidaire Gas Stainless Steel Appliances (Dishwasher, Gas Range, and Over-the-Range Microwave)

## BATHROOM

- Brantford 4" Spread Chrome Plumbing Package (Whole House)
- Simply White Quartz Countertops w/ Oval Bowls
- Fairmont White Flat Panel Cabinets w/ Chrome BP9161196180 Pulls
- Raised/Elongated Toilets in Primary Bath
- Small Pedestal Sink in Powder Room
- CS22 w/ #90 Light Pewter Grout Ceramic Tile Primary Shower Surround and CS22 12x12 w/ #90 Light Pewter Grout Ceramic Tile Garden Tub Surround
- CS22 w/ #90 Light Pewter Grout on Bath #2 Shower Surround

## FLOORING

- Optimum Plus - Driftwood #1056 LVP in Foyer, Great Room, Formal Dining Room, Kitchen / Breakfast Area, Powder Room, Primary Bath, Bath #2, Laundry
- Graceful Finesse Ecru Carpeting

## INTERIOR PAINT & TRIM

- Sherwin Williams Flat Primary Interior Color: City Loft SW7631 w/ Matching Ceiling
- Kneewall on Stairs

## FIREPLACE

- Gas Fireplace w/ Wescott Mantel and Absolute Black Granite Surround

## LIGHTING

- Seville Lighting Package Brushed Nickel (Whole House)

## EXTERIOR

- 6-Panel Front Door w/ Smart Keypad Deadbolt
- Front Door Painted: Iron Ore SW7069
- Moire Black Dimensional Shingles
- 8x8 PVC Front Columns
- Sage Vinyl Body Siding
- Scottish Thistle Board & Batten Accent
- White Exterior Trim
- Black Board & Batten Shutters
- 4 over 4 White Windows
- White Bridgeport Steel Narrow Panel Garage Door
- White Gutters



# THE DRAYTON HOMEPLAN

LOT 333 | ELEVATION E  
2,325 SQFT | 4 BR | 2.5 BA | 2 CAR GARAGE

## DESIGN OPTIONS SUMMARY

### STRUCTURAL

Optional Elevation E (no stone)	BASE HOUSE PRICE: \$361,600
Optional Rear Covered Porch – 12' x 10'	\$1,500
Optional Gas Fireplace	\$8,800
	\$1,650

### DESIGN CENTER OPTIONS \$8,544

Add Smart Keypad Deadbolt Front Door  
Kitchen Island Multicolor Cabinet Option  
Kitchen Level 1 Quartz  
Level 1 Fireplace Mantel  
Level 1 Fireplace Surround  
LVP Level 1 – Foyer  
LVP Level 1 – Great Room  
LVP Level 1 – Formal Dining Room  
LVP Level 1 – Kitchen/Breakfast Area  
LVP Level 1 – Powder Room  
LVP Level 1 – Primary Bath  
LVP Level 1 – Bath #2  
LVP Level 1 – Laundry  
Stainless Steel Gas Range, Microwave and Dishwasher

TOTAL OPTIONS ADDED \$20,494

TOTAL SALES PRICE: \$382,094

Disclaimer: In an effort to continuously improve and develop our products, Caviness & Cates reserves the right to change products, features, pricing, and specifications without prior notice. Features may vary between homes built within the same community. Please see actual home purchase & sale agreement for additional information, disclosures, and disclaimers. Plans are artistic renderings and may not reflect final product. All information on square footage, acreage, and dimensions should be considered approximate. Consult with New Homes Sales Specialist before writing an offer.

