

cypress lakes village

HOMESITE 275
1727 Man O War Drive
Hope Mills, NC

THE CAMBRIDGE HOMEPLAN

ELEVATION C
2,432 SQFT | 4 BR | 3 BA | 2 CAR GARAGE



*Artistic Rendering not lot specific.
For representation purposes only.



.23 ACRE

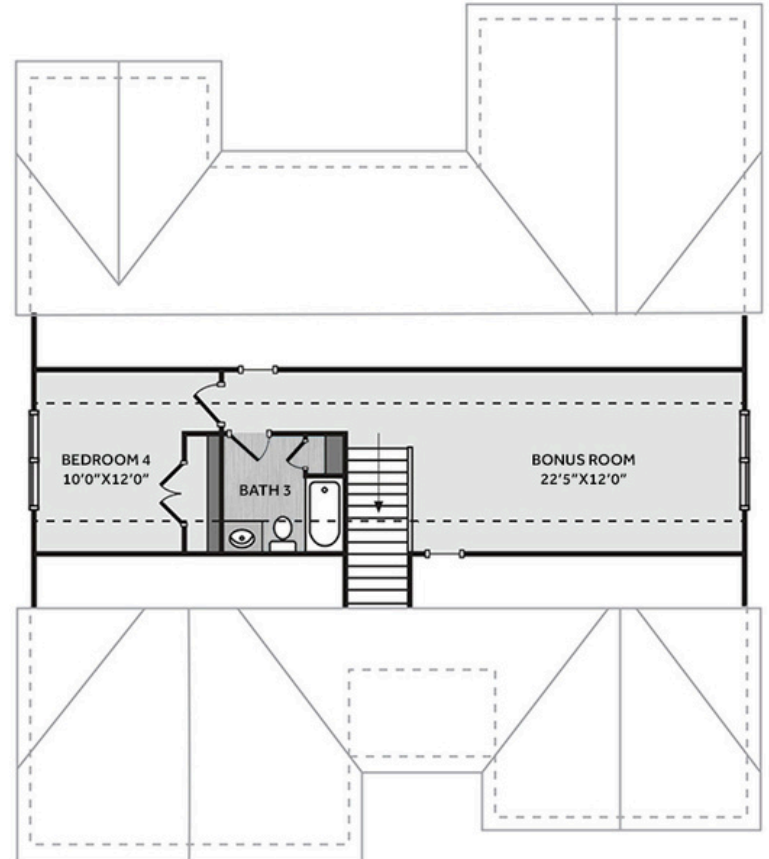
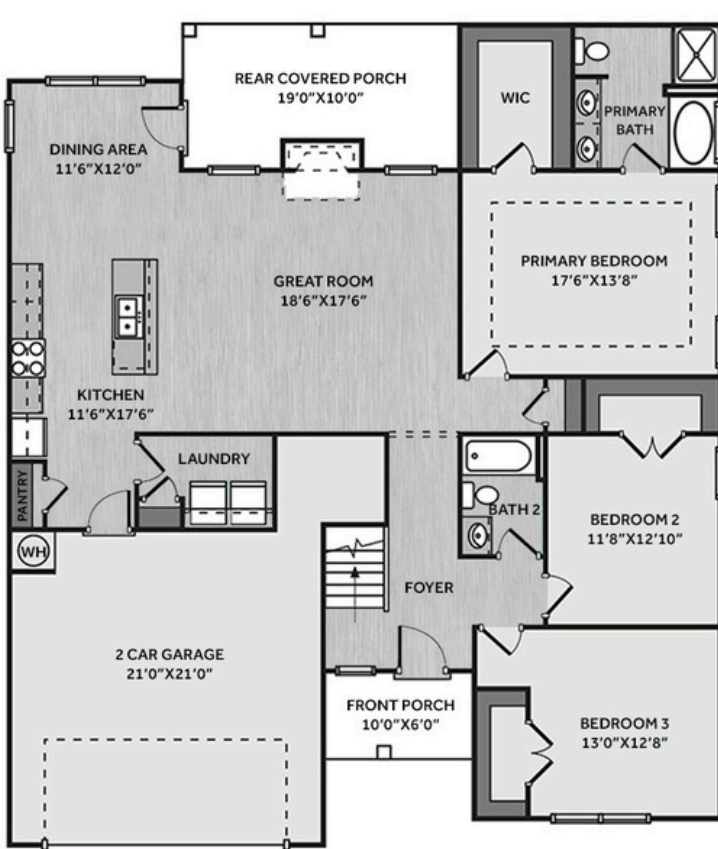
Discover the charm of Cypress Lakes, a sought-after community nestled in the peaceful countryside of Gray's Creek. Known for its serene setting, family-friendly atmosphere, and close-knit neighborhood feel, Cypress Lakes offers the perfect balance of quiet country living and convenient access to nearby Fayetteville and Fort Bragg. Residents of this established neighborhood enjoy amenities including a pool and playground. Perfectly situated just 20 minutes from downtown Fayetteville and Fort Bragg, Cypress Lakes offers rural tranquility with easy access to shopping, dining, entertainment, and top-rated schools—making it an exceptional place to call home.

NEW HOME SPECIALISTS
910.405.8311
info@cavinessandcates.com



Photos, Options,
Virtual Tours & More

SALES AND MARKETING BY:
**Caviness
& Cates**
Communities
Builder's Marketing Group
WWW.CAVINESSANDCATES.COM

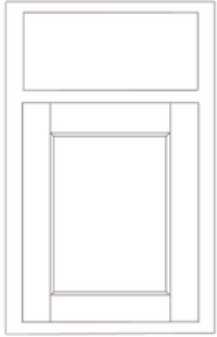


This home features a spacious great room with a gas log fireplace framed by a mantel and black granite surround. The open kitchen, highlighted by an island with a sink overlooking the great room, showcases "New Willow White" quartz countertops, white shaker cabinets with a "Graphite" accent island, a pantry, and stainless-steel appliances, including a microwave, dishwasher, and gas range. The kitchen opens to a dining area with backyard views and access to a large rear-covered porch. The first-floor primary suite features a tray ceiling with crown molding and a walk-in closet, while the ensuite bathroom includes dual quartz sink vanity, a garden tub, and a separate walk-in shower. Two additional first-floor bedrooms feature walk-in closets and share a full hall bathroom with a vanity and tub/shower combination. Conveniently located in the garage entry, the first-floor laundry room includes a linen closet. Upstairs, a fourth bedroom, bonus room, and full bathroom with a linen closet, provide extra living space. Exterior highlights include low-maintenance vinyl siding with shake accents, dimensional roof shingles, a front door painted in SW "Black Magic" and smart keypad entry. This Energy Plus certified home also features a 2-car garage, fiber optic internet availability and a 1-2-10 builder in-house warranty.

KITCHEN

Door Style:
Fairmont

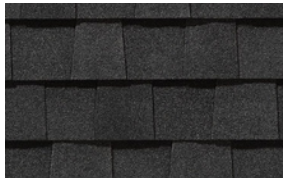
Color:
White



Color:
Graphite



EXTERIOR



PAINT



BATHROOM

Door Style:
Fairmont

Color:
White



FLOORING



LIGHTING





THE CAMBRIDGE HOMEPLAN

LOT 275 | ELEVATION C
2,432 SQFT | 4 BR | 3 BA | 2 CAR GARAGE

KITCHEN

- Brushed Nickel Brantford Kitchen Sink Fixture
- Standard SS 50/50 Double Bowl Sink
- Fairmont White Flat Panel Cabinets w/ Brushed Nickel BP20576195 Pulls
- Fairmont Graphite Accent Kitchen Island
- 1/2 Bullnose New Willow White Quartz Countertops w/ 4" Splash
- Standard Kitchen Layout
- Frigidaire Gas Stainless Steel Appliances (Dishwasher, Gas Range, and Over-the-Range Microwave)

BATHROOM

- Brantford 4" Spread Chrome Plumbing Package (Whole House)
- Niagara Quartz Countertops w/ Oval Bowls
- Fairmont White Flat Panel Cabinets w/ Chrome BP9161196180 Pulls
- Raised/Elongated Toilets in Primary Bath
- ARO4 w/ #93 Fossil Grout Ceramic Tile Primary Shower Surround and ARO4 12x12 w/ #93 Fossil Grout Ceramic Tile Garden Tub Surround
- ARO4 w/ #93 Fossil Grout on Bath #2 and Bath #3 Shower Surround

FLOORING

- Optimum Plus - Driftwood #1056 LVP in Foyer, Great Room, Kitchen / Dining Area, Hall #1, Hall #2, Primary Bath, Bath #2, Bath #3, Laundry
- Graceful Finesse Concrete Carpeting

INTERIOR PAINT & TRIM

- Sherwin Williams Flat Primary Interior Color: First Star SW7646 w/ Matching Ceiling
- Kneewall on Stairs

FIREPLACE

- Gas Fireplace w/ Wescott Mantel and Absolute Black Granite Surround

LIGHTING

- Seville Lighting Package Brushed Nickel (Whole House)

EXTERIOR

- 6-Panel Front Door w/ Smart Keypad Deadbolt
- Front Door Painted: Black Magic SW6991
- Moire Black Dimensional Shingles
- 8x8 PVC Front Columns
- Everest Vinyl Body Siding
- English Wedgewood Shake Accent
- White Exterior Trim
- Black Board & Batten Shutters
- 4 over 4 White Windows
- White Bridgeport Steel Extended Panel Garage Door
- White Gutters



THE CAMBRIDGE HOMEPLAN

LOT 275 | ELEVATION C
2,432 SQFT | 4 BR | 3 BA | 2 CAR GARAGE

DESIGN OPTIONS SUMMARY

STRUCTURAL

Elevation C (no stone)

Optional Rear Covered Porch – per plan

Optional Gas Fireplace

BASE HOUSE PRICE: \$374,900

Standard

\$13,200

\$2,310

DESIGN CENTER OPTIONS \$8,557

Add Smart Keypad Deadbolt Front Door

Kitchen Island Multicolor Cabinet Option/Paint Island Drywall to Match Cabinet

Kitchen Level 1 Quartz

Level 1 Fireplace Mantel

Level 1 Fireplace Surround

LVP Level 1 – Foyer

LVP Level 1 – Great Room

LVP Level 1 – Kitchen/Dining Area

LVP Level 1 – Hall #1

LVP Level 1 – Hall #2

LVP Level 1 – Primary Bath

LVP Level 1 – Bath #2

LVP Level 1 – Bath #3

LVP Level 1 – Laundry

Stainless Steel Gas Range, Microwave and Dishwasher

TOTAL OPTIONS ADDED

\$24,067

TOTAL SALES PRICE: \$398,967

Disclaimer: In an effort to continuously improve and develop our products, Caviness & Cates reserves the right to change products, features, pricing, and specifications without prior notice. Features may vary between homes built within the same community. Please see actual home purchase & sale agreement for additional information, disclosures, and disclaimers. Plans are artistic renderings and may not reflect final product. All information on square footage, acreage, and dimensions should be considered approximate. Consult with New Homes Sales Specialist before writing an offer.

