

LONG POINT RESERVE

HOMESITE 68
132 Michter Street
Vass, NC

THE WEYMOUTH HOMEPLAN

ELEVATION C

1,854 SQFT | 4 BR | 2 BA | 2 CAR GARAGE



.356 ACRE

Welcome to Long Point Reserve, a thoughtfully designed community just off US-1 in the peaceful town of Vass. Offering a selection of townhomes and single-family homes starting from the \$300s, this neighborhood blends countryside tranquility with modern convenience. Residents will enjoy a range of amenities, including a swimming pool and pool house, a scenic walking trail through the pines, and a proposed dog park for four-legged companions. Ideally located, Long Point Reserve is only 15 minutes from Southern Pines, 35 minutes from Fort Bragg via NC-690, and under an hour from Raleigh. Here, residents can experience the charm of rural living with easy access to shopping, dining, and recreation. With its welcoming community, natural beauty, and thoughtful design, Long Point Reserve offers the perfect balance of comfort, connection, and Carolina charm.

NEW HOME SPECIALISTS

910.405.8311

info@cavinessandcates.com



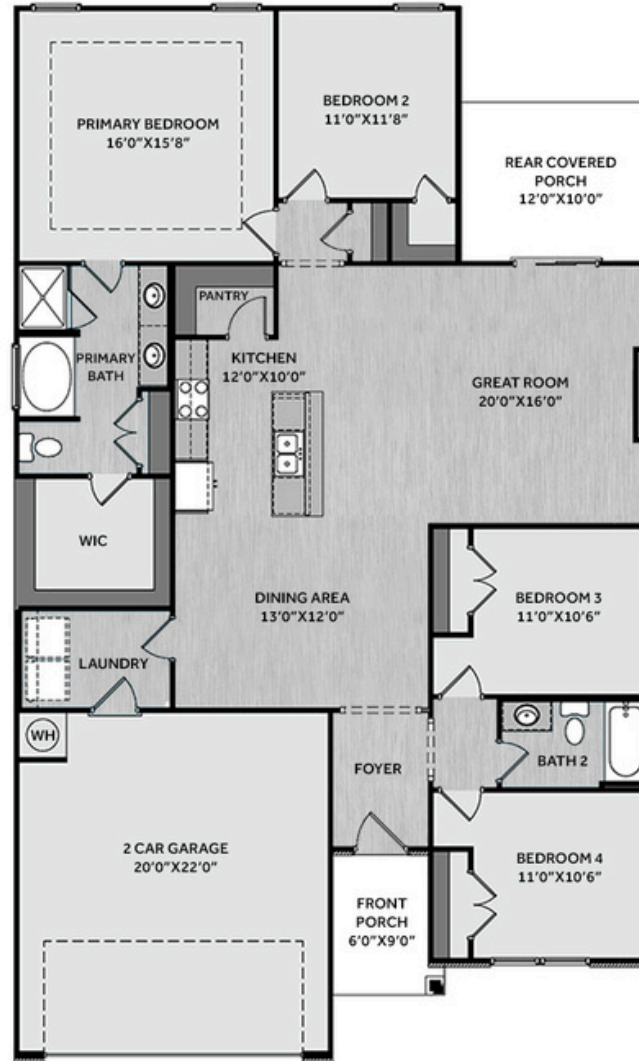
Photos, Options,
Virtual Tours & More

SALES AND MARKETING BY:

**Better
Homes
and Gardens**
REAL ESTATE

**LIFESTYLE
PROPERTY
PARTNERS**

**Caviness
& Cates**
Communities
WWW.CAVINESSANDCATES.COM



Foyer with two-piece crown molding and wainscotting opens to kitchen/dining area.

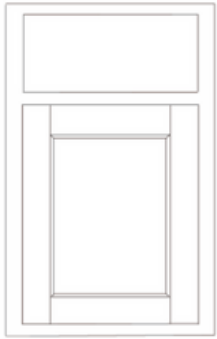
The kitchen overlooks the great room and boasts "New Willow White" quartz countertops, white shaker cabinets, a "Graphite" island, white subway tile backsplash, corner pantry, dining area, and stainless-steel appliances including a microwave, dishwasher, and smooth top range. The spacious great room showcases a linear electric fireplace with a board-and-batten accent wall in "Iron Ore" and access to the rear covered porch. A mudroom is conveniently located off the garage entry. The primary suite features a tray ceiling with crown molding and an en-suite bath with a dual quartz sink vanity, walk-in shower, garden tub, linen closet, and a generous walk-in closet. Two additional bedrooms off the foyer share a full hall bath, while a fourth bedroom near the primary suite is ideal for guests or a home office. Exterior includes low-maintenance vinyl siding with shake and board and batten accents, a stone skirt, dimensional roof shingles, and a covered front porch with a SW "Outerspace" door and smart keypad entry. This home also features a 2-car garage, fiber optic internet availability, Energy Plus certification, and a 1-2-10 in-house builder warranty.

KITCHEN

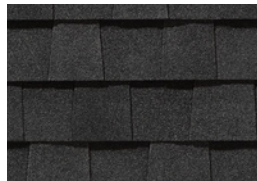
Door Style:
Fairmont

Color:
White

Color:
Graphite



EXTERIOR



PAINT



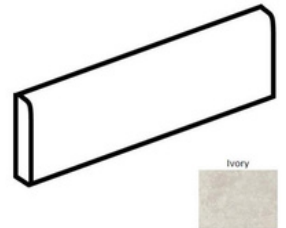
BATHROOM

Door Style:
Fairmont

Color:
White



FLOORING



LIGHTING



KITCHEN

- Brushed Nickel Brantford Kitchen Sink Fixture
- Standard SS 50/50 Double Bowl Sink
- Fairmont White Flat Panel Cabinets w/ Brushed Nickel 6501195 Pulls
- Fairmont Graphite Kitchen Accent Island
- 1/2 Bullnose New Willow White Quartz Countertops
- 3x6 Subway Tile - Color Wheel Classic / 3x6 #0190 Arctic White Glossy w/ #44 Bright White Grout - Set in Brick Pattern Kitchen Backsplash
- Standard Kitchen Layout w/ 42" Wall Cabinets, and 2 1/4" Crown on Kitchen Cabinets
- Ferguson/Frigidaire Electric Stainless Steel Appliances (Dishwasher, Electric Range, and Over-the-Range Microwave)

BATHROOM

- Brantford 4" Spread Chrome Plumbing Package (Whole House)
- Niagara Quartz Countertops w/ Square Bowls
- Fairmont White Flat Panel Cabinets w/ Chrome BP9161196180 Pulls
- Primary Bath Adult Height Cabinets
- Adult Height Cabinets in Bath #2
- Raised/Elongated Toilets in Primary Bath, Bath #2
- ARO4 w/ #93 Fossil Grout Ceramic Tile Primary Shower Surround and ARO4 12x12 w/ #93 Fossil Grout Ceramic Tile Garden Tub Surround
- ARO4 w/ #93 Fossil Grout on Bath #2 Shower Surround

FLOORING

- Optimum Plus - Lighthouse #5091 LVP in Foyer, Great Room, Kitchen / Dining Area, Hall #1, Hall #2, Primary Bath, Bath #2, Laundry
- Graceful Finesse Concrete Carpeting

INTERIOR PAINT & TRIM

- Sherwin Williams Flat Primary Interior Color: First Star SW7646 w/ Matching Ceiling
- Board & Batten Style Wainscot w/ 2 Piece Crown Molding in Foyer
- Pull Down Attic Stairs
- Tray Ceiling in Primary Suite

FIREPLACE

- Linear Electric Fireplace w/ Board & Batten Accent Wall Painted Iron Ore SW7069

LIGHTING / ELECTRICAL

- Seville Lighting Package Brushed Nickel (Whole House)
- 2 Zire One Light Pendants over Kitchen Island
 - Model: 6590301-962
- 2 Bulb Floodlights on Rear Corners

EXTERIOR

- 6-Panel Front Door & Transom Package w/ Smart Keypad Deadbolt and Brushed Nickel Handleset
- Front Door Painted: Outerspace SW6251
- Moire Black Dimensional Shingles
- Tapered/Stone Base Front Columns
- Norris Gray - Stack Stone Accent
- Harbor Gray Vinyl Body Siding
- Harbor Gray Shake Accent
- Harbor Gray Board & Batten Accent
- White Exterior Trim
- 4 over 1 White Windows
- Black Board & Batten Shutters
- White Bridgeport Steel Extended Panel Garage Door
- White Gutters



THE WEYMOUTH HOMEPLAN

LOT 68 | ELEVATION C
1,854 SQFT | 4 BR | 2 BA | 2 CAR GARAGE

DESIGN OPTIONS SUMMARY

STRUCTURAL

Optional Rear Covered Porch – 12' x 10'	BASE HOUSE PRICE: \$366,200
Optional Linear Electric Fireplace w/ Accent Wall	\$8,800
	\$3,750

DESIGN CENTER OPTIONS \$14,291

Raised/Elongated Toilet (x1- Bath #2)
6-Panel Front Door & Transom Package
Kitchen Pendant Lights: Zire One Light Pendant – 6590301-962 (x2- Over Kitchen Island)
Add Two – 2 Bulb Floodlights on Single Switch Circuit (Rear Corners)
Add Smart Keypad Deadbolt Front Door
Add Level 2 Board & Batten Style Wainscot – Foyer
Add 2 Piece Crown Molding – Foyer
Pull Down Attic Stairs
Kitchen – Add 42" Wall Cabinets
Kitchen – Add 2 ¼" Crown to Standard Cabinet Layout
Primary Bath – Adult Height Vanity
Hall Bath – Adult Height Vanity (x1- Bath #2)
Kitchen Island Multicolor Cabinet Option / Paint Island Drywall to Match Cabinet
Kitchen Level 1 Quartz
Upgrade all Vanity Bowls to Square Bowls
LVP Level 1 – Foyer
LVP Level 1 – Great Room
LVP Level 1 – Kitchen/Dining Area
LVP Level 1 – Hall #1
LVP Level 1 – Hall #2
LVP Level 1 – Primary Bath
LVP Level 1 – Bath #2
LVP Level 1 – Laundry
Kitchen Backsplash: 3x6 Subway Tile – Color Wheel Classic
Upgrade to Front Door Handleset
Stainless Steel Electric Range, Microwave and Dishwasher

TOTAL OPTIONS ADDED \$26,841

TOTAL SALES PRICE: \$393,041

Disclaimer: In an effort to continuously improve and develop our products, Caviness & Cates reserves the right to change products, features, pricing, and specifications without prior notice. Features may vary between homes built within the same community. Please see actual home purchase & sale agreement for additional information, disclosures, and disclaimers. Plans are artistic renderings and may not reflect final product. All information on square footage, acreage, and dimensions should be considered approximate. Consult with New Homes Sales Specialist before writing an offer.

