



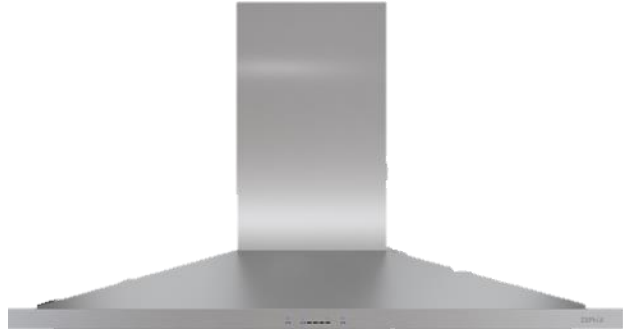
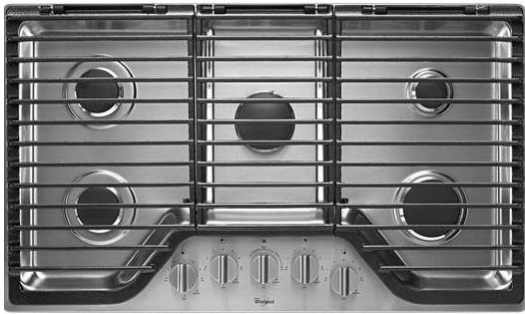
VISTA RIDGE

Standard Features

FieldStone
PREMIER

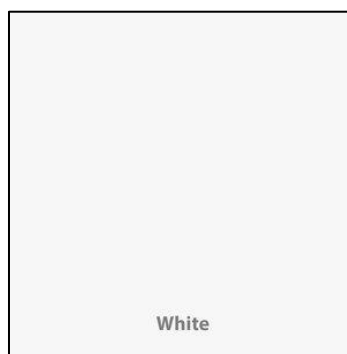
APPLIANCES

Gourmet appliance package includes 36" gas cooktop, stainless steel hood, dishwasher, and wall oven with an upper microwave/convection oven



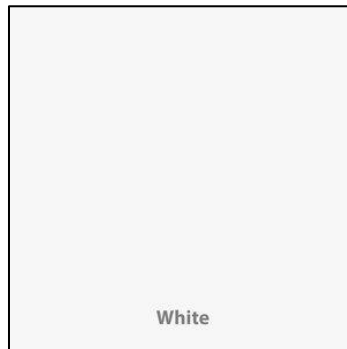
MASTER BATH ENCLOSURES-per plan

Lawson Tub: 5' Lawson tub; 42" x 42" two-sided glass shower; chrome framed door; White Cultured Marble



SECONDARY BATH ENCLOSURES

Tub/Shower combo with White Cultured Marble



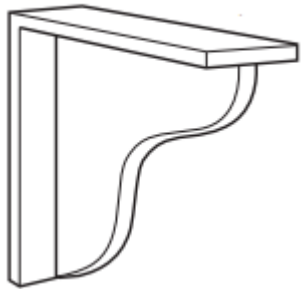
CABINETS

Upper Cabinet Style: Staggered Uppers or 42" Uppers

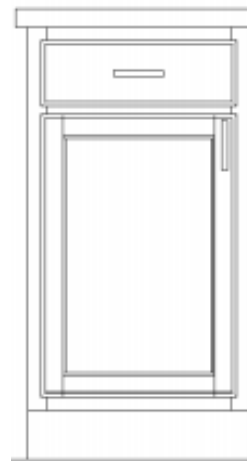
Islands are included; size is determined by plan



Island Support Corbel



Base Cabinet Set-Up: Drawer and cabinet box w/half shelf



CABINETS



COUNTERTOPS

2cm Granite: Included in kitchen and bathrooms



KITCHEN SINKS

Undermount stainless steel sinks: included with all granite/quartz countertops:



5050 / 6040

BATHROOM SINKS

Undermount round white: included with granite/quartz countertops



ELECTRICAL

****Exact plates may differ from images below****



Decora Light Switches / Duplex Outlets

Pre-wire for fan at all bedrooms & Family (fan box with switch for future fan blades)

Nest Thermostat



Low Voltage Package

Fireplace with painted shelf mantel & tile surround. *Stain is an option at HomeFitting*

(Tile pictured is not an included product)



EXTERIOR DOORS

Front Door	Garage service and entry door (door between garage and mudroom)
 <p data-bbox="371 1077 844 1108">2 Panel Square Top / 2 Panel Arch Top</p>	 <p data-bbox="972 1077 1153 1108">6 Panel Raised</p> <p data-bbox="886 1113 1245 1142"><i>*Only door available at this location</i></p>

INTERIOR DOORS



2 Panel Square Top / 2 Panel Arch Top

EXTERIOR COLORS

Main color and stone color cannot be the same as next door neighbors or neighbors across the street. Buyer may choose up to (3) colors: Main, Accent, and Trim

Siding material: James Hardie. Main & Accent color options:

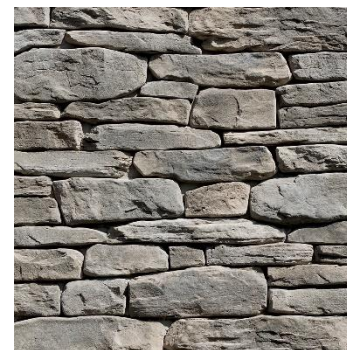
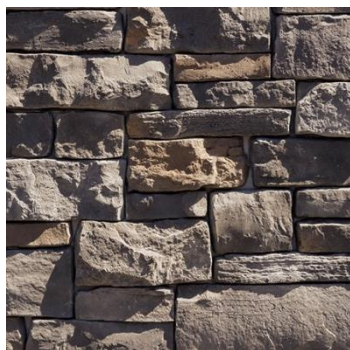
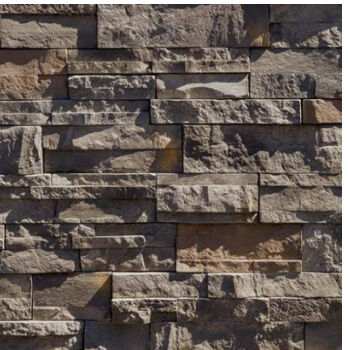
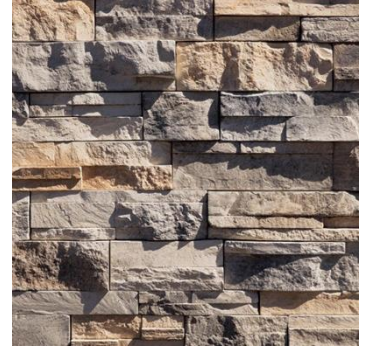
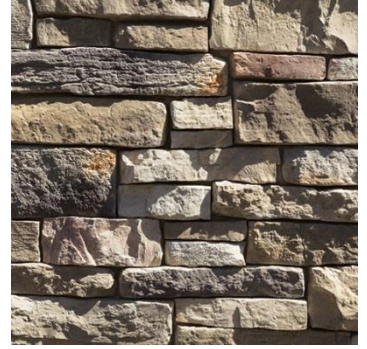
Siding and Battens Color Offering



Trim Color Offering



Exterior Stone:



Shingles:

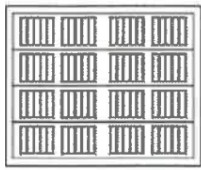


Included Exterior Coach Lights:

On either side of garage door(s) & by front door	Rear doors and garage service door
 <p data-bbox="365 808 544 850">Black / Bronze</p>	 <p data-bbox="1079 808 1258 850">Black / Bronze</p>

GARAGE DOORS

Garage door styles; windows required



CS SERIES - SHORT GROOVED PANEL



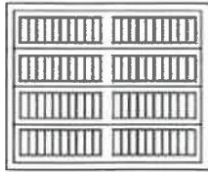
STOCKBRIDGE - 3 PANEL



STOCKBRIDGE LONG PANEL



STOCKBRIDGE IV - 4 LITE



CSX SERIES - LONG GROOVED PANEL



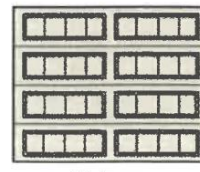
STOCKBRIDGE - 3 PANEL



STOCKTON - 8 PANEL



STOCKBRIDGE - 4 PANEL



CSL SERIES - RECESSED PANEL



GLAZED

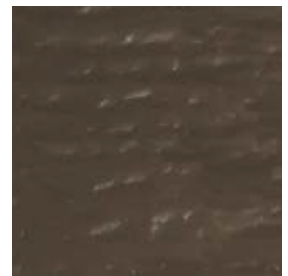
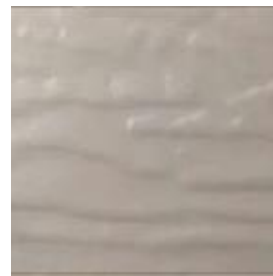


STOCKTON - 10 PANEL



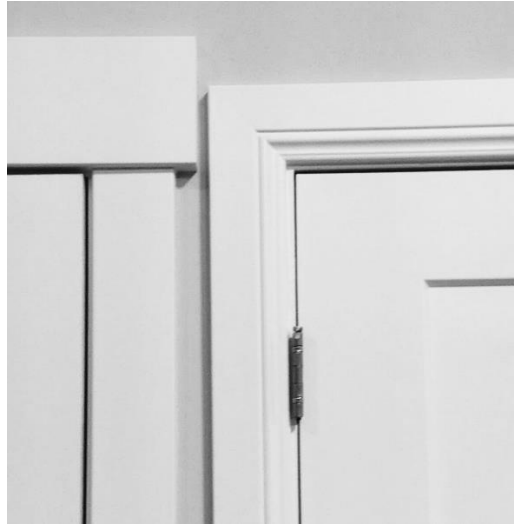
TRADITIONAL LONG - 4 PANEL

GARAGE DOOR COLORS

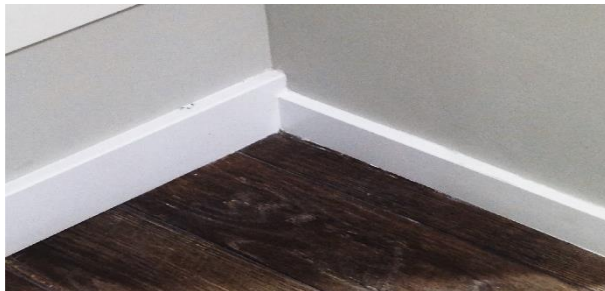


FINISH TRIM

Baseboards & trim included style: Craftsman or Traditional



Large Base & Case



Craftsman / Traditional

Included window style is drywall wrapped: Wood painted window sills are available as an upgrade



FLOORING

Laminate included in entry, kitchen, nook, mudroom, pantry, powder bath



FLOORING

Floorte included in wet areas (full bathrooms & laundry)



FLOORING

Carpet w/6 LB pad included



HARDWARE

Included interior knobs. Bathroom and master bedroom doors will have a lock



Brushed nickel / Oil rubbed bronze

Exterior doors include a keyed knob with round deadbolt.

SGD have a specific locking mechanism



Brushed nickel / Oil rubbed bronze

Bathroom hardware: towel rings, towel bars, & toilet paper holders:



Included in chrome

LIGHTING


Chrome, Brushed Nickel or Bronze Included

3 Bulb flush mount ceiling lights



3 Bulb bathroom vanity lights. (1) fixture over each sink

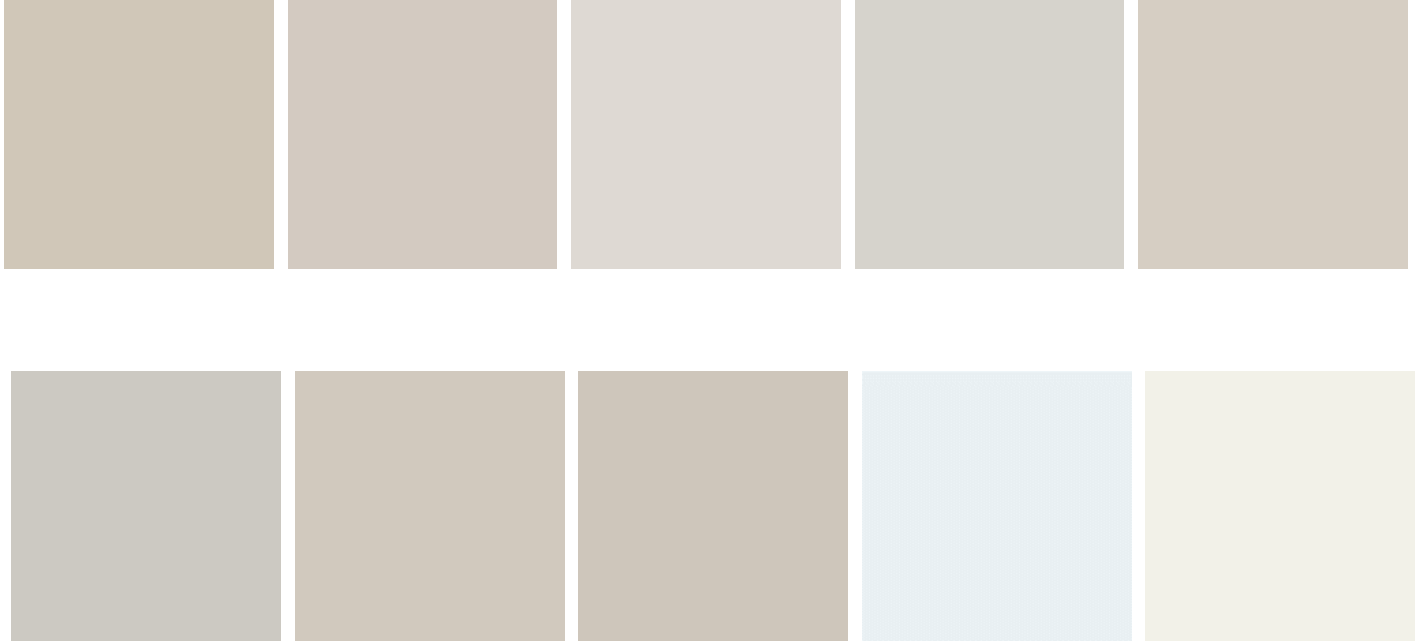


Pendant lights over island (2)	Drum light over nook (1)	Entry Chandelier (1)
		

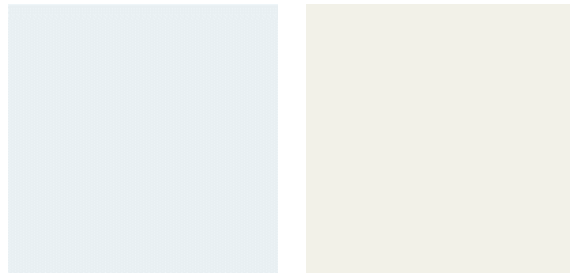
*Fieldstone Homes reserves the right to remove or replace standard options at any time without notice.

PAINT

Two-tone paint included. Walls and ceiling are painted one color with an eggshell finish:



Doors & Trim are painted with a semi-gloss finish:



PLUMBING

(2) Sinks included in master bathroom vanity

Kitchen Faucet: Moen / Integra / Chrome



Bathroom plumbing fixtures:



Sink faucets / Shower head & tub/shower combo / separate tub filler

MECHANICAL

Number of included furnaces vary per plan. Furnaces are sized to match finished square footage. Included furnace is an 80% efficiency furnace with a 13-SEER AC unit. Upgrades are available in HomeFitting.

MIRRORS

All bathrooms come with mirrors sized to match the vanity. Mirrors are mounted to the wall with clips. Mirror frames are available as an upgrade in HomeFitting.

WINDOWS

Double paned low-E windows included.

INSULATION

Attic: R-44 Blown-in insulation included

Exterior walls: R-19 Roll & Batt insulation on all exterior walls (except garage)

Insulated garage doors are included

Insulated exterior garage walls can be added as an option in HomeFitting.

VISTA RIDGE | Standard Features

- FULL "COLOR PLUS" HARDIE EXTERIOR SIDING
- EXTERIOR STONE REQUIREMENT (*PER PLAN*)
- 3RD CAR GARAGE
- INSULATED GARAGE DOOR
- GARAGE DOOR WINDOWS PER ELEVATION-NO CHANGES
- LEVEL 3 CABINETS
- LARGE KITCHEN ISLAND (*SIZE PER PLAN*)
- STAGGERED OR 42" UPPER KITCHEN CABINETS W/ CROWN MOLDING
- SOFT CLOSE DRAWERS/HINGES
- 60" DUAL SINK VANITY @MASTER
- LEVEL 0 2CM GRANITE COUNTERTOPS @KITCHEN/ BATHROOMS.
- UNDERMOUNT KITCHEN & BATHROOM SINKS
- GOURMET APPLIANCE PACKAGE (36" GAS COOKTOP, STAINLESS STEEL HOOD, BUILT IN WALL OVEN W/ MICRO-CONVECTION ABOVE, & STAINLESS-STEEL DISHWASHER)
- 5' LAWSON SOAKER TUB W/ 42X42" FRAMED GLASS SHOWER, SMOOTH CULTURED MARBLE SURROUND-PER PLAN
- TUB/SHOWER COMBO WITH SMOOTH CULTURED MARBLE SURROUND @SECONDARY BATHROOM
- CHROME KITCHEN/BATH PLUMBING/HARDWARE PACKAGE
- UPGRADED LIGHTING FIXTURES @ENTRY, NOOK, ISLAND & BATHROOMS
- DECORA (ROCKER) SWITCHES
- CEILING FAN PRE-WIRE IN FAMILY ROOM & ALL BEDROOMS. (DOES NOT INCLUDE FAN OR BRACE IN BASEMENT BEDROOMS)
- BASIC LOW VOLTAGE PACKAGE + NEST THERMOSTAT
- KITCHEN & FAMILY ROOM CAN PACKAGE

*Fieldstone Homes reserves the right to remove or replace standard options at any time without notice.

VISTA RIDGE | Standard Features

- 32" FIREPLACE W/ PAINTED MANTEL SHELF & GROUP A TILE SURROUND
- LARGE BASE/CASE
- DRYWALL WRAPPED OPENINGS
- DRYWALL WRAPPED WINDOW SILLS
- 2 TONE PAINT
- CARPET LEVEL 1
- 6# CARPET PAD
- LAMINATE LEVEL 1 @ENTRY, KITCHEN, NOOK, MUDROOM, POWDER BATH (*PER PLAN*)
- FLOORTE- 4 MARVELLA COLORS @ FULL BATHS/LAUNDRY