

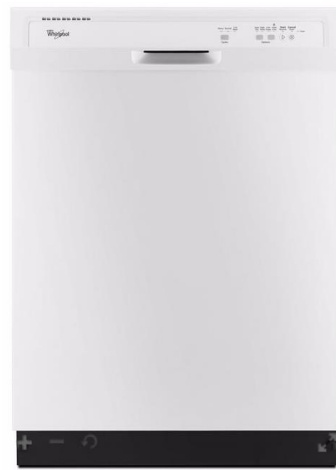
LEGACY FARMS ESTATES

Standard Features

FieldStone
HOMES

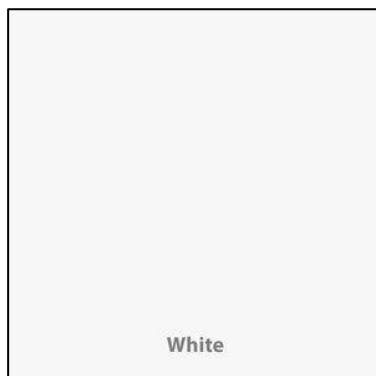
APPLIANCES

Appliance package includes range, dishwasher, and micro-hood. Included package: electric in black or white



MASTER BATH ENCLOSURES-per plan

Walk-in shower-Cultured Marble w/ Framed Bi-Pass Sliding Door in Chrome



SECONDARY BATH ENCLOSURES

Tub/Shower combo with fiberglass surround



CABINETS

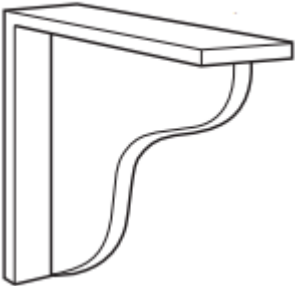

Upper Cabinet Style: Staggered Uppers or 42" Uppers

Islands included-per plan



Oak Cabinets

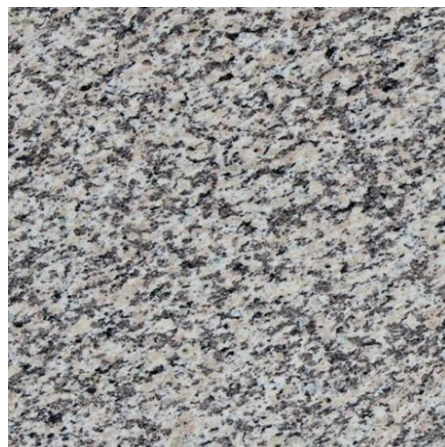


Island Support Corbel	Base Cabinet Set-Up: Drawer and cabinet box w/half shelf
	

*Fieldstone Homes reserves the right to remove or replace standard options at any time without notice.

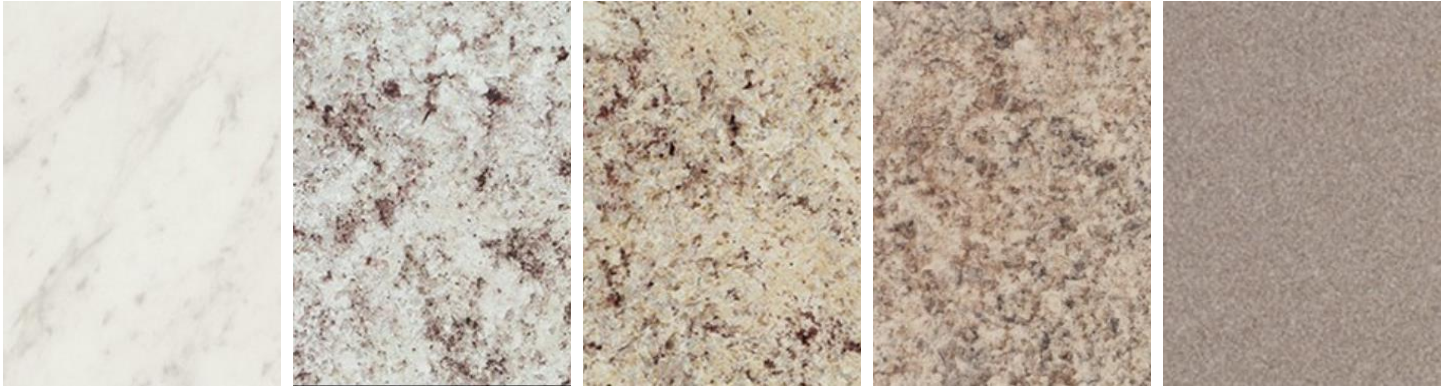
COUNTERTOPS

2cm Granite: Included in kitchen & master bath



COUNTERTOPS

Laminate: Included in secondary bathrooms



Included laminate edge: waterfall

KITCHEN SINKS

Undermount stainless steel sinks: included with all granite/quartz countertops:



5050 / 6040

BATHROOM SINKS

Undermount round white: included with granite/quartz countertops.



Drop-in round white: included with all laminate countertops- secondary bathrooms



ELECTRICAL

****Exact plates may differ from images below****



Toggle Light Switches / Duplex Outlets

EXTERIOR DOORS

Front door (windows required)	Garage service and entry door (door between garage and mudroom)
 <p data-bbox="574 982 643 1012">4-Lite</p>	 <p data-bbox="987 982 1156 1012">6 Panel Raised</p> <p data-bbox="896 1016 1247 1045"><i>*Only door available at this location</i></p>

INTERIOR DOORS



2 Panel Square Top / 2 Panel Arch Top

EXTERIOR COLORS

Main color and stone color cannot be the same as next door neighbors or neighbors across the street. Buyer may choose up to (3) colors: Main, Accent, and Trim

Siding material: James Hardie. Main & Accent color options:

Siding and Battens Color Offering



Trim Color Offering



Exterior Stone:



*Fieldstone Homes reserves the right to remove or replace standard options at any time without notice.

Shingles:

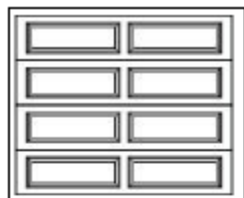


Included Exterior Coach Lights:

On either side of garage door(s) & by front door	Rear doors and garage service door
 <p data-bbox="365 808 544 840">Black / Bronze</p>	 <p data-bbox="1079 808 1258 840">Black / Bronze</p>

GARAGE DOORS

Garage doors with windows included



XL Series - Long Raised



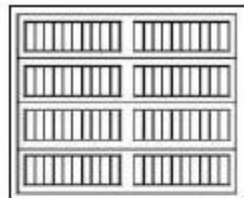
Glazed Long



Stockton Long



Richmond Long



CSX Series - Long Grooved



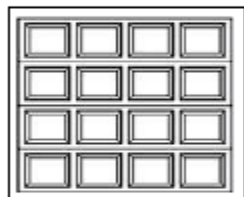
Glazed Long



Stockton Long



Richmond Long



Raised Panel Series - Short
Raised Panel



Glazed Short



Stockton Short



CSL Series -
Recessed Panel



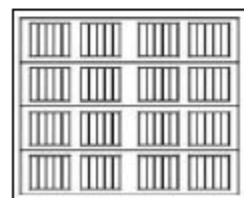
Glazed Long



Stockton Long



Richmond Long



CS Series - Short



Glazed Long

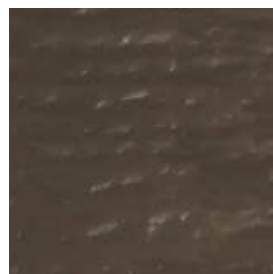
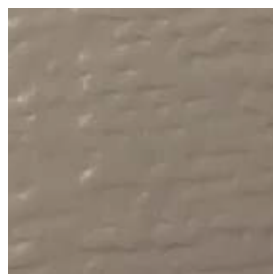
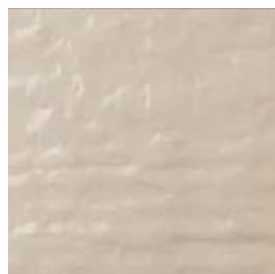


Stockton Long



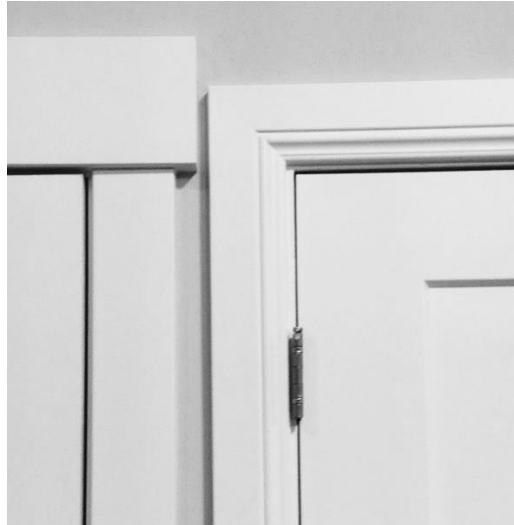
Richmond Long

GARAGE DOOR COLORS

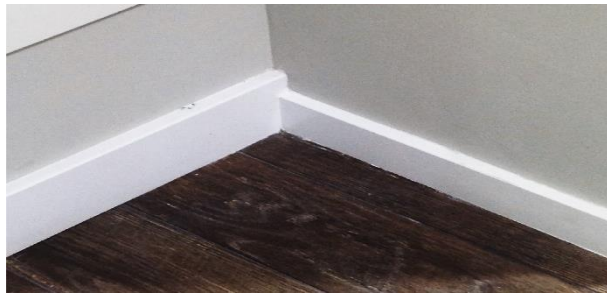


FINISH TRIM

Baseboards & trim included style: Craftsman or Traditional



Baseboard height: Large 5 1/2". Door casing width: 3 1/4"



Craftsman / Traditional

Included Window Style is Drywall Wrapped: Wood Painted Window Sills are an Upgrade



FLOORING

Laminate included in entry, kitchen, nook, mudroom, pantry, powder bath



FLOORING

Floorte included in wet areas (full bathrooms & laundry)



FLOORING

Carpet w/6 LB pad included



HARDWARE

Included interior knobs. Bathroom and master bedroom doors will have a lock



Brushed nickel / Oil rubbed bronze

Exterior doors include a keyed knob with round deadbolt.

SGD will have a specific locking mechanism



Brushed nickel / Oil rubbed bronze

Bathroom hardware: towel rings, towel bars, & toilet paper holders:



Included in chrome

LIGHTING

3 Bulb flush mount ceiling lights



Brushed nickel / Oil rubbed bronze

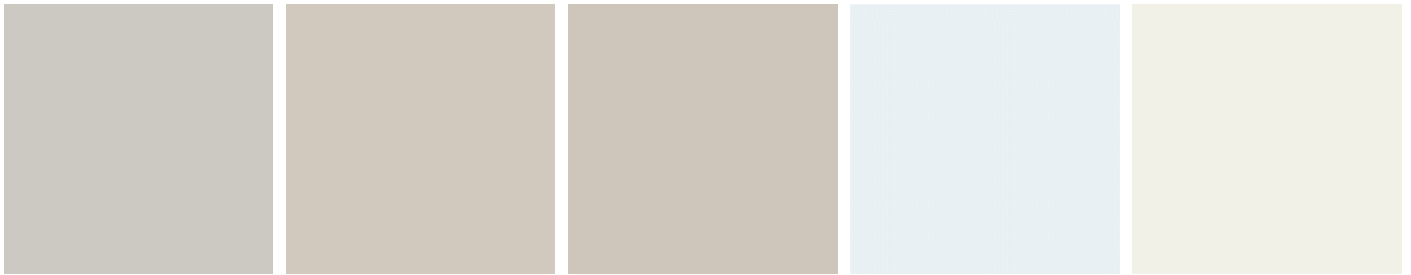
3 Bulb bathroom vanity lights. (1) fixture over each sink



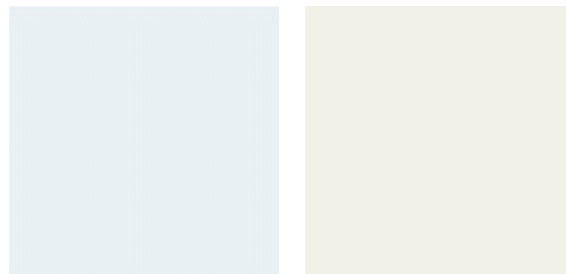
Chrome / Brushed nickel / Oil rubbed bronze

PAIN

Two-tone paint included. Walls and ceiling are painted one color with an eggshell finish:



Doors & Trim are painted with a semi-gloss finish:



PLUMBING

Kitchen Faucet: Moen / Integra / Chrome



Bathroom plumbing fixtures:



Sink faucets / Shower head & tub/shower combo / separate tub filler

MECHANICAL

Number of included furnaces vary per plan. Furnaces are sized to match finished square footage. Included furnace is an 80% efficiency furnace with a 13-SEER AC unit. Upgrades are available in HomeFitting.

MIRRORS

All bathrooms come with mirrors sized to match the vanity. Mirrors are mounted to the wall with clips. Mirror frames are available as an upgrade in HomeFitting.

WINDOWS

Double paned low-E windows included.

INSULATION

Attic: R-44 Blown-in insulation included

Exterior walls: R-19 Roll & Batt insulation on all exterior walls (except garage)

Insulated garage doors and exterior garage walls can be added as an option in HomeFitting.

LEGACY FARMS ESTATES (Lrg) | Standard Features

- FULL "COLOR PLUS" HARDIE BOARD EXTERIOR
- EXTERIOR STONE REQUIREMENT (*PER PLAN*)
- WINDOWS IN FRONT DOOR REQUIREMENT
- WINDOWS IN GARAGE DOOR PER PLAN
- LEVEL 0 CABINETS
- KITCHEN ISLAND PER PLAN
- STAGGERED OR 42" UPPER KITCHEN CABINETS W/ CROWN MOLDING
- LEVEL 0 2CM GRANITE COUNTERTOPS @KITCHEN/MASTER BATH
- LAMINATE COUNTERTOPS @SECONDARY BATHROOM/POWDER
- UNDERMOUNT KITCHEN & MASTER BATH SINK
- LEVEL 1 ELECTRIC (B/W) APPLIANCE PACKAGE
- WALK-IN FRAMED GLASS SHOWER, SMOOTH CULTURED MARBLE SURROUND. PER PLAN
- TUB/SHOWER COMBO WITH FIBERGLASS SURROUND @SECONDARY BATHROOM
- CHROME BATH PLUMBING/HARDWARE PACKAGE
- LEVEL 1 CARPET
- 6# CARPET PAD
- LEVEL 1 LAMINATE @ENTRY, KITCHEN, NOOK, MUDROOM, POWDER BATH (*PER PLAN*)
- FLOORTE @FULL BATHS/LAUNDRY
- 2 TONE PAINT
- LARGE BASE/CASE
- KITCHEN/FAMILY ROOM CAN PACKAGE
- 80% EFFICIENT FURNACE, 13 SEER AC UNIT
- 40 GALLON WATER HEATER
- DRYWALL WRAPPED WINDOW SILLS
- ALL LOW VOLTAGE/ TV-DATA TO BE SELECTED WITH THE AUDIO VIDEO COMPANY

*Fieldstone Homes reserves the right to remove or replace standard options at any time without notice.