

DAYBREAK APARTMENT

Standard Features

APPLIANCES

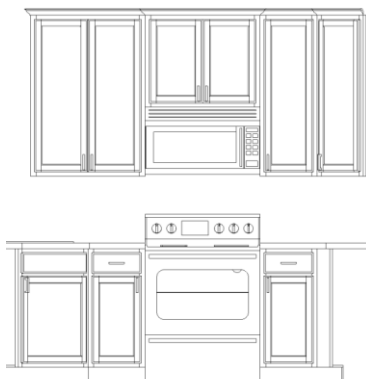
Appliance package includes range, dishwasher, and micro-hood. Included package: electric in black or white.

Microwave is vented to the exterior



CABINETS

Upper Cabinet Style: 30" Uppers. Dovetail drawers with soft close hardware on drawers/doors.



Oak Cabinets

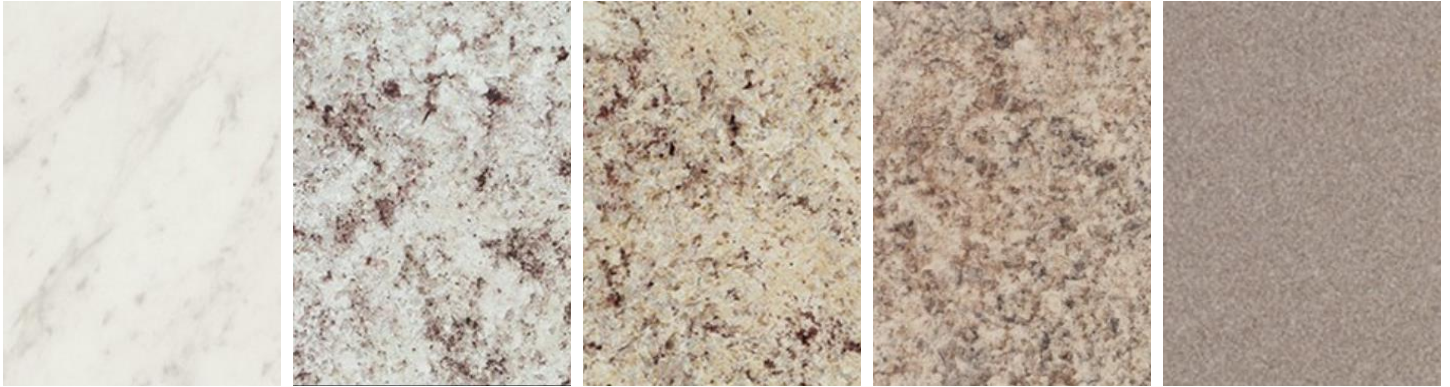


Base Cabinet Set-Up: Drawer and cabinet box w/half shelf



COUNTERTOPS

Laminate: Included in Kitchen and bathroom



Included laminate edge: waterfall

KITCHEN SINK

Drop-in stainless-steel sink: included with laminate countertops:



BATHROOM SINK

Drop-in round white: included with all laminate countertops



PLUMBING



Kitchen faucet: Chrome



Bathroom plumbing fixtures: Chrome





Bathroom hardware: Chrome

BATHROOM ENCLOSURE

Tub/Shower combo with fiberglass surround with chrome shower rod



EXTERIOR DOORS

<p>Entry door at bottom of stair landing to outside & Mudroom door facing garage apartment entry. (No door from landing into garage- will be walled off for privacy.)</p>	<p>Garage service and entry door (door between garage and mudroom)</p>
 <p>2 Panel Square Top / 2 Panel Arch Top</p>	 <p>6 Panel Raised <i>*Only door available at this location</i></p>

INTERIOR DOORS



2 Panel Square Top / 2 Panel Arch Top

HARDWARE

Included interior knobs. Bathroom and master bedroom doors will have a lock



Brushed nickel / Oil rubbed bronze

Exterior doors include a keyed knob with round deadbolt.



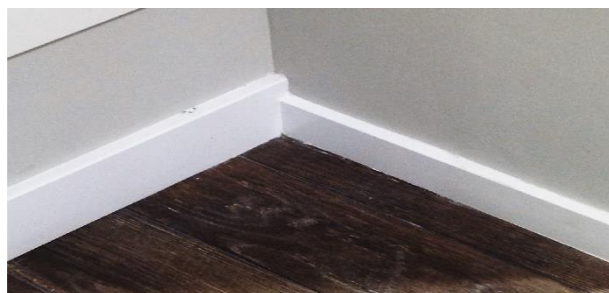
Brushed nickel / Oil rubbed bronze

FINISH TRIM

Baseboards & trim included style: Craftsman or Traditional



Large base/case



Craftsman / Traditional

Included Window Style is Drywall Wrapped: Wood Painted Window Sills are an Upgrade



FLOORING

Floorte included in kitchen, laundry closet, bathroom and bottom of garage stairs at the landing



FLOORING

Carpet w/6 LB pad included

(Included on stairs up to apartment)



LIGHTING

3 Bulb flush mount ceiling lights



Brushed nickel / Oil rubbed bronze

3 Bulb bathroom vanity lights. (1) fixture over each sink



Chrome / Brushed nickel / Oil rubbed bronze

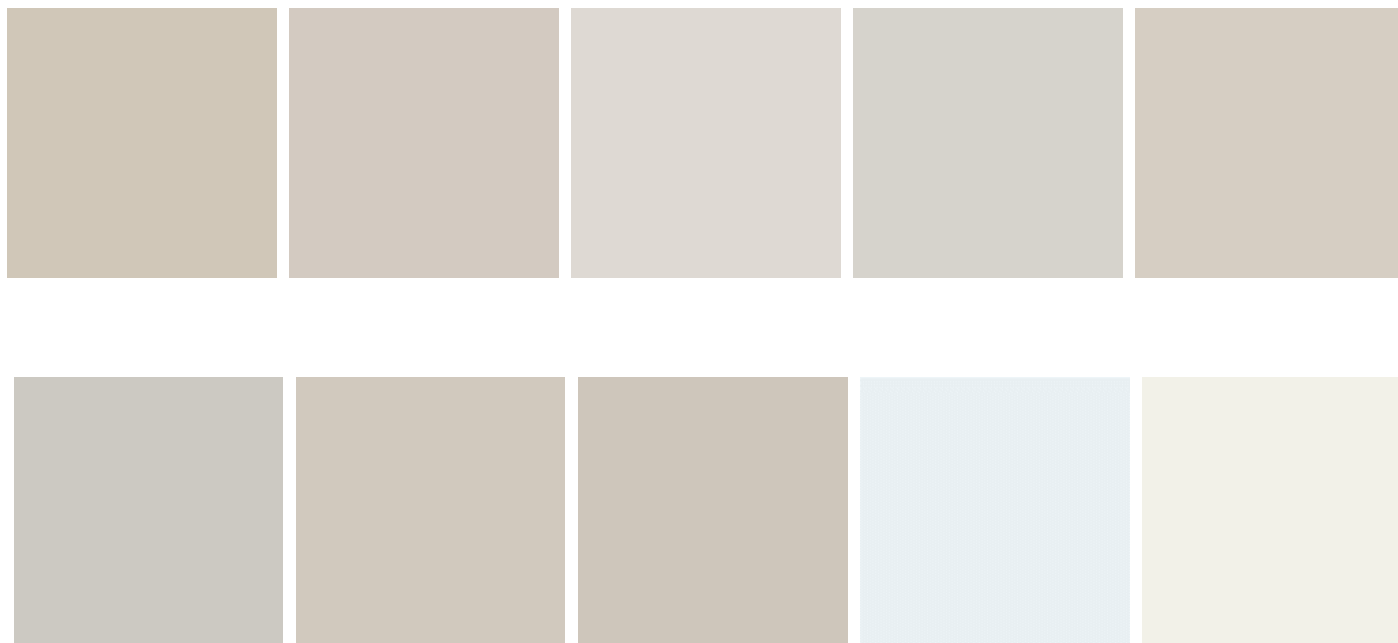
****Exact plates may differ from images below****



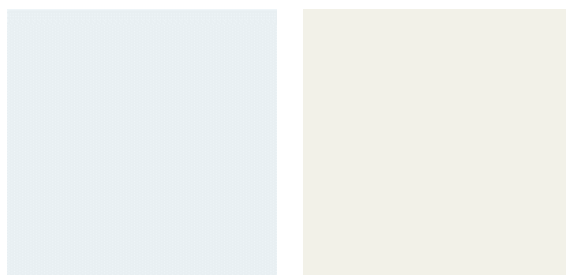
Toggle Light Switches / Duplex Outlets

PAIN

Two-tone paint included. Walls and ceiling are painted one color with an eggshell finish:



Doors & Trim are painted with a semi-gloss finish:



DAYBREAK APARTMENT | Standard Features

- LEVEL 0 CABINETS WITH SOFT CLOSE DRAWERS & DOORS (EXCLUDES ANY ROLL-OUT TRAYS OR BUILT IN GARBAGE OPTIONS)
- 30" UPPER KITCHEN CABINETS W/ CROWN MOLDING
- LAMINATE COUNTERTOPS @ KICHEN & BATHROOM
- LEVEL 1 ELECTRIC (B/W) APPLIANCE PACKAGE. MICROWAVE VENTED TO THE EXTERIOR
- 5' LAWSON SOAKER TUB W/ 42X42" OPEN GLASS SHOWER **OR** WALK-IN SHOWER, SMOOTH CULTURED MARBLE SURROUND (LAYOUT PER PLAN)
- TUB/SHOWER COMBO WITH FIBERGLASS SURROUND @SECONDARY BATHROOM
- CHROME BATH PLUMBING/HARDWARE PACKAGE
- LEVEL 1 CARPET
- 6# CARPET PAD
- FLOORTE @ STAIR LANDING, KITCHEN, LAUNDRY, BATHROOM
- 2 TONE PAINT
- LARGE BASE/CASE
- KITCHEN CAN PACKAGE
- 95% EFFICIENT FURNACE, 13 SEER AC UNIT
- 40 GALLON ELECTRIC WATER HEATER
- INSULATION EXTERIOR WALLS R-24 NET & BLOW
- INSULATION ATTIC R-49 BATT
- GARAGE CEILING R-30 (WHICH IS THE APARTMENT FLOOR)
- DRYWALL WRAPPED WINDOW SILLS
- ALL LOW VOLTAGE/TV-DATA TO BE SELECTED WITH THE AUDIO VIDEO COMPANY

*Fieldstone Homes reserves the right to remove or replace standard options at any time without notice.