



# CABINET ACCESSORIES

# OPTIONAL CABINET HARDWARE – LEVEL 1

\*Product Availability is Subject to Change



**OPTIONAL CABINET HARDWARE – LEVEL 1**

\*Product Availability is Subject to Change



**PROCL5-ORB**



**PROCL5-SN**



**PROCL5-WN**



**PROCL4-ORB**



**PROCL4-SN**



**PROCL4-WN**



**PROCL10-ORB**



**PROCL10-SN**



**PROCL10-WN**



**PROCL6-ORB**



**PROCL6-SN**



**PROCL6-WN**



**PROCL3-ORB**



**PROCL3-SN**



**PROCL3-WN**



**PROCL3-PC**



**PROCL2-ORB**



**PROCL2-SN**



**PROCL2-WN**



**PROCL9-ORB**



**PROCL9-SN**



**PROCL9-WN**



**PROCO6-SN (3'')**  
**PROCO7-SN (96mm)**  
**PROCO15-SN (128mm)**  
**PROCO16-SN (160mm)**



OPTIONAL CABINET HARDWARE - LEVEL 2

\*Product Availability is Subject to Change



**OPTIONAL CABINET HARDWARE - LEVEL 2**

\*Product Availability is Subject to Change



# OPTIONAL CABINET HARDWARE – LEVEL 3

\*Product Availability is Subject to Change



**OPTIONAL CABINET HARDWARE – LEVEL 3**

\*Product Availability is Subject to Change



**PROPR4-ORB**



**PROPR4-SN**



**PROPR4-WN**



**PROPR10-ORB**



**PROPR10-SN**



**PROPR10-WN**



**PROPR5-ORB**



**PROPR5-SN**



**PROPR5-WN**



**PROPR14-ORB**



**PROPR16-ORB**



**PROPR14-SN**



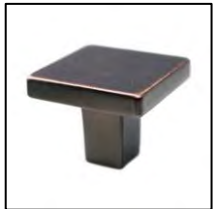
**PROPR16-SN**



**PROPR14-PC**



**PROPR16-PC**



**PROPR18-ORB**



**PROPR18-SN**



**PROPR18-PC**



**PROPR15-ORB**



**PROPR17-ORB**



**PROPR15-SN**



**PROPR17-SN**



**PROPR15-PC**



**PROPR17-PC**



OPTIONAL CABINET HARDWARE – LEVEL 4

\*Product Availability is Subject to Change





**OPTIONAL CABINET HARDWARE – LEVEL 4**

\*Product Availability is Subject to Change



**BP19009BBZ**



**BP19009BBR**



**BP19009SS**



**BP19009ORB**



**BP55272GM**



**BP55272ORB**



**BP55272BBZ**



**4121-1055-P**



**9899-1MDB-P**



**BP9362BBR**



**BP9362BBZ**



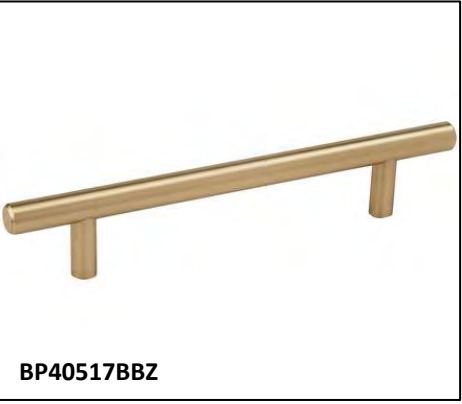
**BP55272G10**



**BP55272PN**



**BP40517BBR**



**BP40517BBZ**



**BP55276BBR**



**BP55276BBZ**



**BP55276G10**



**BP55276PN**



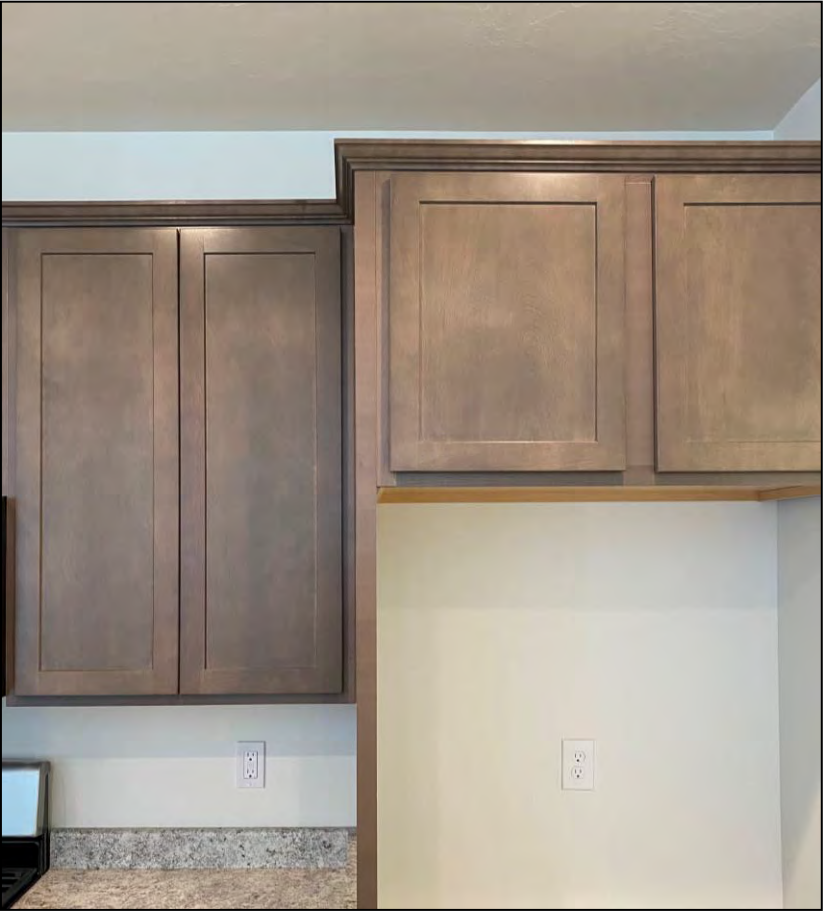
**BP55276ORB**



**BP55276GM**

# CROWN MOLDING

\*Trim Style That Sits on  
The Top of The Upper Cabinets\*



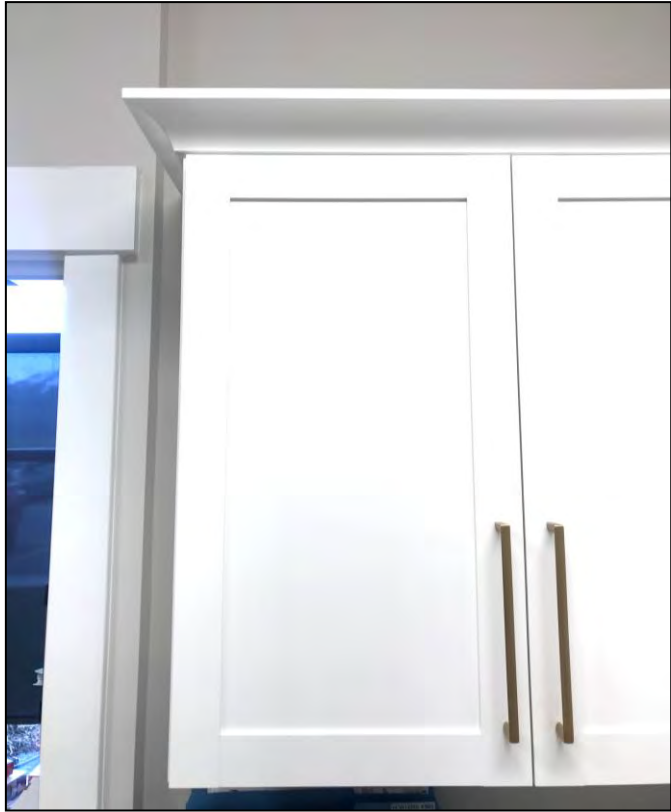
Standard Traditional  
Crown Molding  
\*Standard for all Levels\*

\*Product Availability is  
Subject to Change

# CROWN MOLDING

\*Trim Style That Sits on  
The Top of The Upper Cabinets\*

\*Product Availability is  
Subject to Change



Cove Crown Molding  
\*Upgrade for Levels 0-2\*  
\*Standard for Levels 3-10\*



# CROWN MOLDING

\*Trim Style That Sits on  
The Top of The Upper Cabinets\*

\*Product Availability is  
Subject to Change



Block Crown Molding  
\*Upgrade for Levels 0-2\*  
\*Standard for Levels 3-10\*

OPTIONAL CABINET ACCESSORIES

\*Product Availability is Subject to Change



Standard Base Cabinets:  
Drawer on Top, Cabinets  
On Bottom w/ Half Shelf



Optional Bank of  
3 or 4 Drawers



Optional Garbage  
Rollout

OPTIONAL CABINET ACCESSORIES

\*Product Availability is Subject to Change



Optional Base Rollout Trays  
\*Aristokraft\*



Optional Base Rollout Trays  
\*Kemper\*



OPTIONAL CABINET ACCESSORIES

\*Product Availability is Subject to Change



Optional Lazy Susan  
(Also Adds a Bank of Drawers)  
Applicable Per Plan  
\*Aristokraft\*



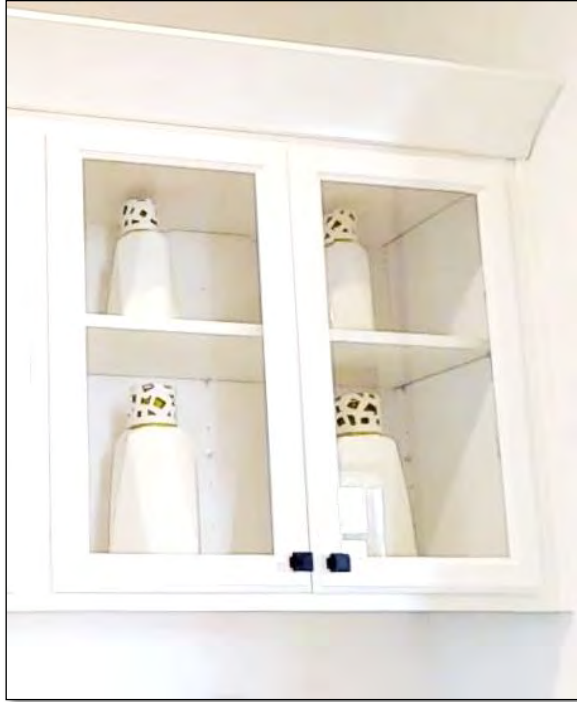
Optional Sink  
Tilt-out Tray



Optional Vertical  
Tray Dividers

OPTIONAL CABINET ACCESSORIES

\*Product Availability is Subject to Change



Optional Clear Glass  
Upper Cabinet  
\*Price is Per Cabinet Door\*

OPTIONAL CABINET ACCESSORIES (Cont.)

\*Product Availability is Subject to Change



Standard Laminated  
Drawer Boxes



Upgraded Soft-Close Hardware  
w/ Full Extension Hardwood  
Drawer Box and Dovetail Joints