

DESCRIPTION OF POD B

A PARCEL OF LAND NOW KNOWN AS POD B, WITHIN THE REMAINDER OF THE RESERVED DEVELOPMENT RIGHT AREA OF ZOCALO, A CONDOMINIUM WITHIN TRACT 8B OF "LOT SPLIT SURVEY LOT LINE ADJUSTMENT AND EASEMENT PLAT PREPARED FOR RINCON INVESTMENTS LLC, ZOCALO CONDOMINIUM OWNERS ASSOCIATION AND SANTA FE ESTATES LLC", RECORDED IN THE OFFICE OF THE SANTA FE COUNTY CLERK AS PLAT BOOK 778 PAGES 41-42, ALL LYING WITHIN SEC. 12, T.17N., R.9E., NMPM, CITY AND COUNTY OF SANTA FE NEW MEXICO, WHICH MAY BE MORE PARTICULARLY DESCRIBED AS FOLLOWS:

BEGINNING AT A POINT ON THE WESTERN BOUNDARY OF POD B COMMON WITH A PUBLIC UTILITY EASEMENT AS SHOWN ON PLAT RECORDED AS BOOK 587 PAGES 16-18, WHICH LIES S08°57'17"W 1100.38 FEET FROM THE NORTHWEST CORNER OF SAID TRACT 8B;

THENCE N13°40'04"E A DISTANCE OF 40.66 FEET TO A POINT;
THENCE S76°19'56"E A DISTANCE OF 6.00 FEET TO A POINT;
THENCE N13°40'04"E A DISTANCE OF 97.33 FEET TO A POINT;
THENCE S76°19'56"E A DISTANCE OF 130.98 FEET TO A POINT;
THENCE S13°40'04"W A DISTANCE OF 138.00 FEET TO A POINT;
THENCE S76°19'56"E A DISTANCE OF 87.01 FEET TO A POINT;
THENCE S13°40'04"W A DISTANCE OF 146.00 FEET TO A POINT;
THENCE N76°19'56"W A DISTANCE OF 218.50 FEET TO A POINT;
THENCE N13°40'04"E A DISTANCE OF 146.01 FEET TO A POINT;
THENCE N76°19'56"W A DISTANCE OF 5.49 FEET TO THE POINT OF BEGINNING, MORE OR LESS, HAVING AN AREA OF 1.153 ACRES, MORE OR LESS, ALL AS SHOWN ON EXHIBIT A ATTACHED HERETO.



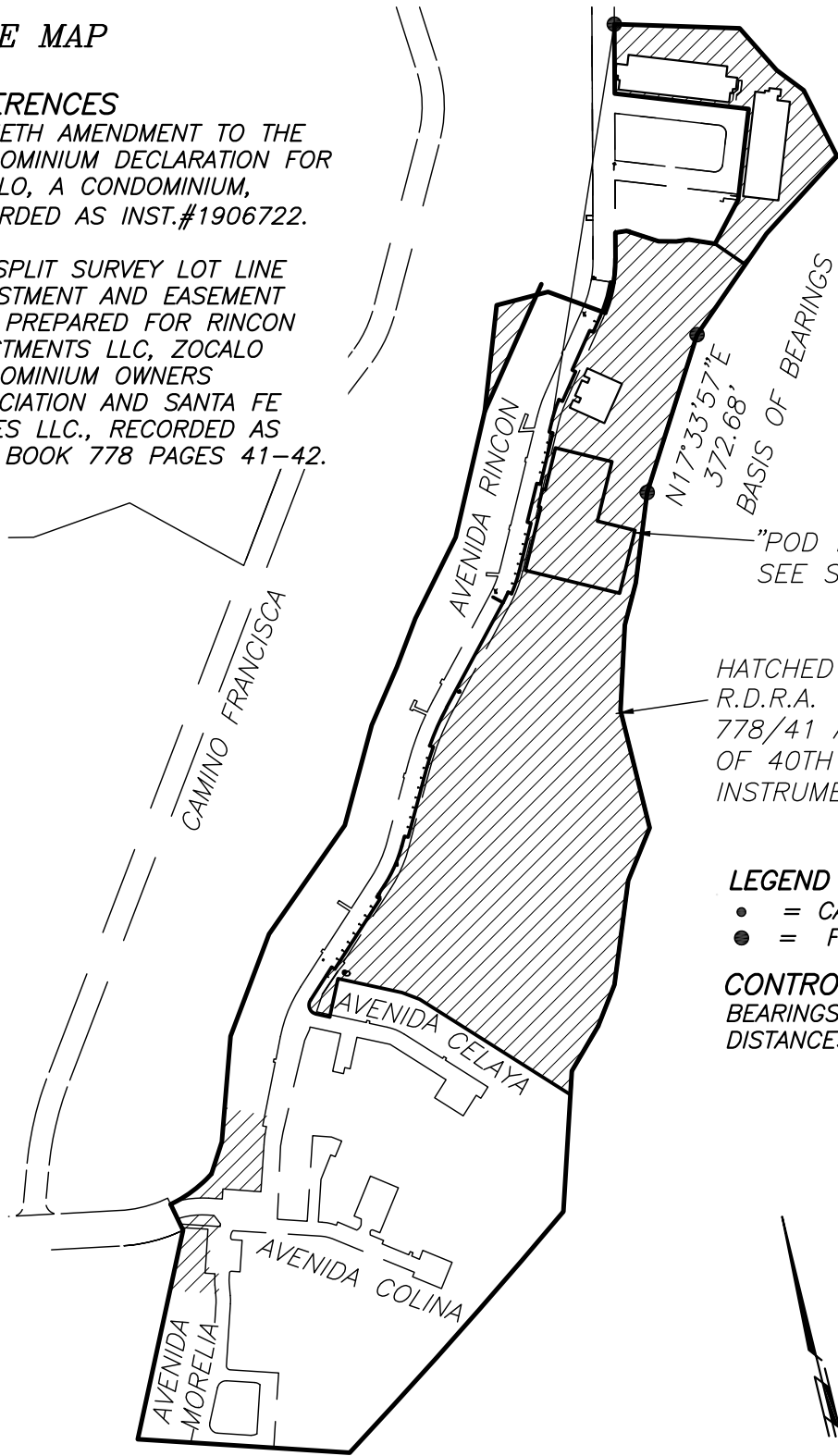
Diego J. Sisneros
DIEGO J. SISNEROS N.M.P.L.S #13986 11/16/2020

SITE MAP

REFERENCES

FORTIETH AMENDMENT TO THE
CONDOMINIUM DECLARATION FOR
ZOCALO, A CONDOMINIUM,
RECORDED AS INST.#1906722.

LOT SPLIT SURVEY LOT LINE
ADJUSTMENT AND EASEMENT
PLAT PREPARED FOR RINCON
INVESTMENTS LLC, ZOCALO
CONDOMINIUM OWNERS
ASSOCIATION AND SANTA FE
ESTAES LLC., RECORDED AS
PLAT BOOK 778 PAGES 41-42.



HATCHED AREA: REMAINING
R.D.R.A. WITHIN TRACT 8B PLAT
778/41 AS SHOWN ON PLAT
OF 40TH CONDO AMENDMENT
INSTRUMENT #1906722

LEGEND

- = CALCULATED POINT, NOT SET
- = FOUND SURVEY MONUMENT

CONTROL SUMMARY

BEARINGS ARE LOCAL.
DISTANCES ARE GROUND.

SCALE 1"=400'

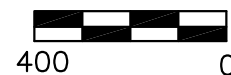
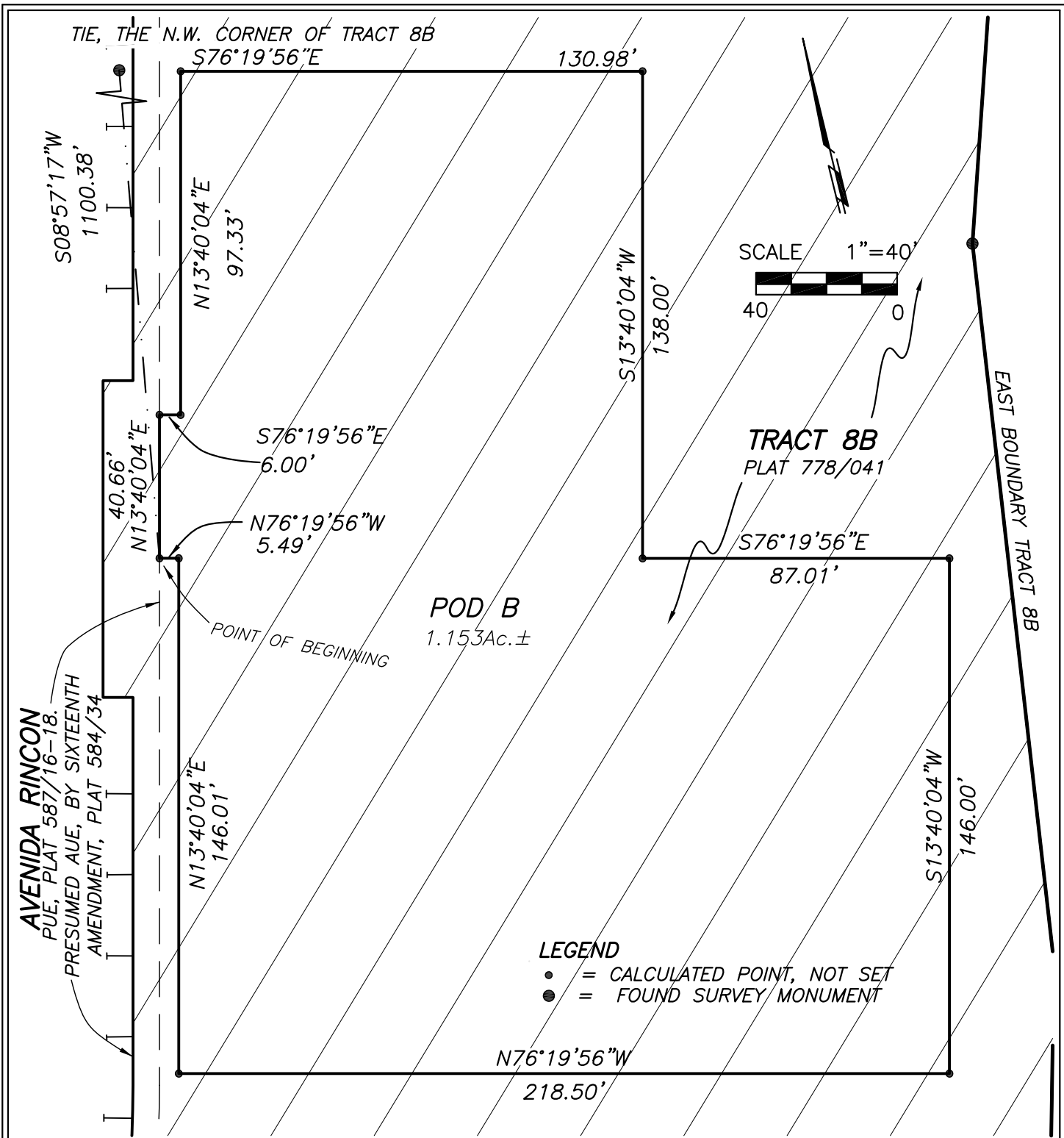


EXHIBIT A
SHEET 1 OF 2

POD B, EXHIBIT

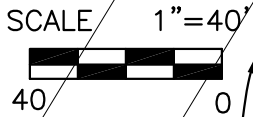
TRACT 8B, ZOCALO, A CONDOMINIUM
COUNTY OF SANTA FE, NEW MEXICO
RECORDED IN PLAT Bk.778, Pg.41.

DAWSON SURVEYS INC.
PROFESSIONAL LAND SURVEYORS
2502B CAMINO ENTRADA
SANTA FE, N.M. 87507
FILE#10110-PODB DATE:11/16/20



AVENIDA RINCON
PUE, PLAT 587/16-18.
PRESUMED AVE, BY SIXTEENTH
AMENDMENT, PLAT 584/34

TIE, THE N.W. CORNER OF TRACT 8B
S76°19'56"E
130.98'



TRACT 8B
PLAT 778/041

POD B
1.153Ac. ±

LEGEND
 • = CALCULATED POINT, NOT SET
 ● = FOUND SURVEY MONUMENT

POD A, EXHIBIT
 TRACT 8B, ZOCALO, A CONDOMINIUM
 COUNTY OF SANTA FE, NEW MEXICO
 RECORDED IN PLAT Bk.778, Pg.41.

EXHIBIT A
 DAWSON SURVEYS INC.
 PROFESSIONAL LAND SURVEYORS
 2502B CAMINO ENTRADA
 SANTA FE, N.M. 87507
 FILE#10110-PODB DATE:11/16/20